

# GAS Leak

Genuinely Approachable Sudoku  
from the CtC Discord

Volume 53:

June 1 – June 30, 2025

Welcome to June!

We got a full month of GAS puzzles for you, one better than the other.

In addition to the puzzles we are reminded of how to nerd-snipe our setter Philip Newman, that birds are really dinos in disguise and that Bill cringes at (some sort of) crocodile jaws.

On the puzzle side we have the usual ones, but also some with a different grid size, one with included latin square, some to calculate a bit, ... but each and every one fulfilling the motto „Genuinely Approachable“.

Have fun solving!

## June 1, 2025: Squishy Save

Philip Newman

Walkthrough of "To Whom It May Concern" by me:

<https://youtu.be/WGfkgwbR3X4>

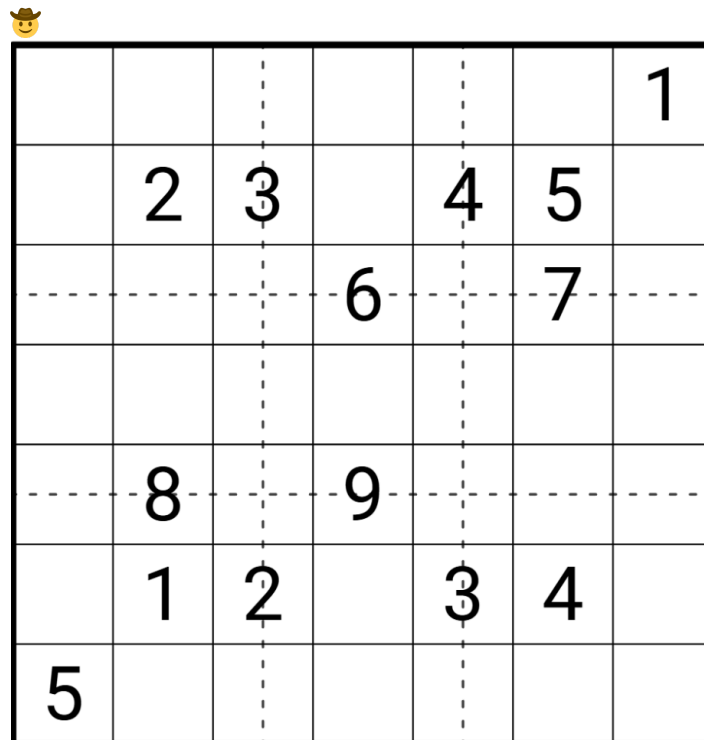
@clover? is sick! Don't worry though, I was able to make something fit for today... just had to... smush it a bit.

Today's **GAS** is a **Squishdoku**! This one is nerd-snipe inspired... @Allagem was curious how restricted this ruleset is compared to other global rules (like Antiknight) and found the answer: [#theory-and-programming](#)

Naturally, I got sucked in for several hours trying to find a minimal Squishdoku: [<Thread>](#)

Since this is a normal-rules breaking puzzle, I've been generous with the hat times. It's not hard, I promise! Just keep in mind that while each 3x3 region will have all digits 1-9, the rows and columns will each be missing two digits; don't try to use hidden singles on those!

**Normal Squishdoku rules apply: Place a digit from 1-9 in each cell. Digits in each row, column, and 3x3 region cannot repeat. The dashed lines indicate the boundaries of regions, and cells divided by lines are part of multiple regions.**



A 7x7 grid representing a Squishdoku puzzle. The grid is divided into 3x3 regions by dashed lines. The regions are: (1,1)-(3,3), (1,4)-(3,6), (4,1)-(6,3), (4,4)-(6,6), (7,1)-(7,7). The grid contains the following digits:

						1
	2	3		4	5	
			6		7	
	8		9			
	1	2		3	4	
5						

Play on SudokuPad: <https://sudokupad.app/philip-newman/20250601-squishy-save>

Play on Penpa+: <https://tinyurl.com/yyp3n2xa>

BONUS (see next page)

## BONUS

I'm intending to put out a little patreon preview pack at some point; it's not ready yet, but these two Squishdoku might appear there, so you get a preview preview! (The second is more GAS Leak level, I think.) Go check out my patreon for more nonsense like this:

<https://patreon.com/sudokutheory>

9c: <https://sudokupad.app/sejqgn6rrg>

SMUSH: <https://sudokupad.app/hj51c7fq0n>

**June 2, 2025: Sum by X**  
by Bill Murphy

Walkthrough for Sequence Sudoku: <https://youtu.be/WIARJyckppo> (I'll do a walkthrough for Squishy Surprise + 2 Extras in one video)

If you competed in the ISC over the weekend, you'll have to let me know which puzzles were your favourites and why they were all mine

Speaking of crushing souls, Today's **GAS** is a **Sum By X Sudoku!**

*Normal Sudoku Rules Apply. Clues outside the grid give the sum of the first X cells, where X is the first shaded cell seen from the direction of the clue. (eg. The 16 clue in column 3 and the 23 in row 1 is the sum of the first 4 cells.)*

	13	17	16						
23			4				6		
17		3						7	
7	2								8
9					2				
					7				
					3				12
	8								2
		7						3	17
			6				4		19
							21	13	11

## June 3, 2025: Tilting X-Windmill

by Philip Newman

Walkthrough of "Sum by X" by Bill:

<https://youtu.be/c6T1UXLg3K4>

Time for another quirky nerd-snipe inspired variant!

Before that, I forgot to link this last week (post timing, man), but you can watch Thomas Snyder's talk from SudokuCon 2025, "How To Solve Sudoku Like a World Champion", here!

<https://www.youtube.com/watch?v=ogUrOegOYvs>

Today's **GAS** is a **Tilted 5x5 Latin Square Sudoku!** @ChinStrap asked about this one, and after @Sam Cappleman-Lynes showed how restricted the variant is I had a go at making one with the theoretical minimum number of givens! [#theory-and-programming](#)

I'm not going to include those as bonus puzzles directly here, but feel free to try them out. 😊

Normal sudoku rules apply.

**Tilted 5x5 Latin Square: The grey cells form a 5x5 Latin Square using a set of five digits from 1-9 (to be determined by the solver); digits cannot repeat along diagonals within the Latin Square.**

(For example, r1c5/r2c6/r3c7/r4c8/r5c9 contains the same set of 5 distinct digits as r2c6/r3c5/r4c4/r5c3/r6c2, etc.)

This one took quite a bit longer in testing, and it's another unusual variant so I've been quite generous with the times (I think!), you can do it!

↓↓↓ (The puzzle is on the next page) ↓↓↓

Tilted 5x5 Latin Square: The grey cells form a 5x5 Latin Square using a set of five digits from 1-9 (to be determined by the solver); digits cannot repeat along diagonals within the Latin Square.



1								
				1		2		3
3		4				6		7
7		8		9				
								9

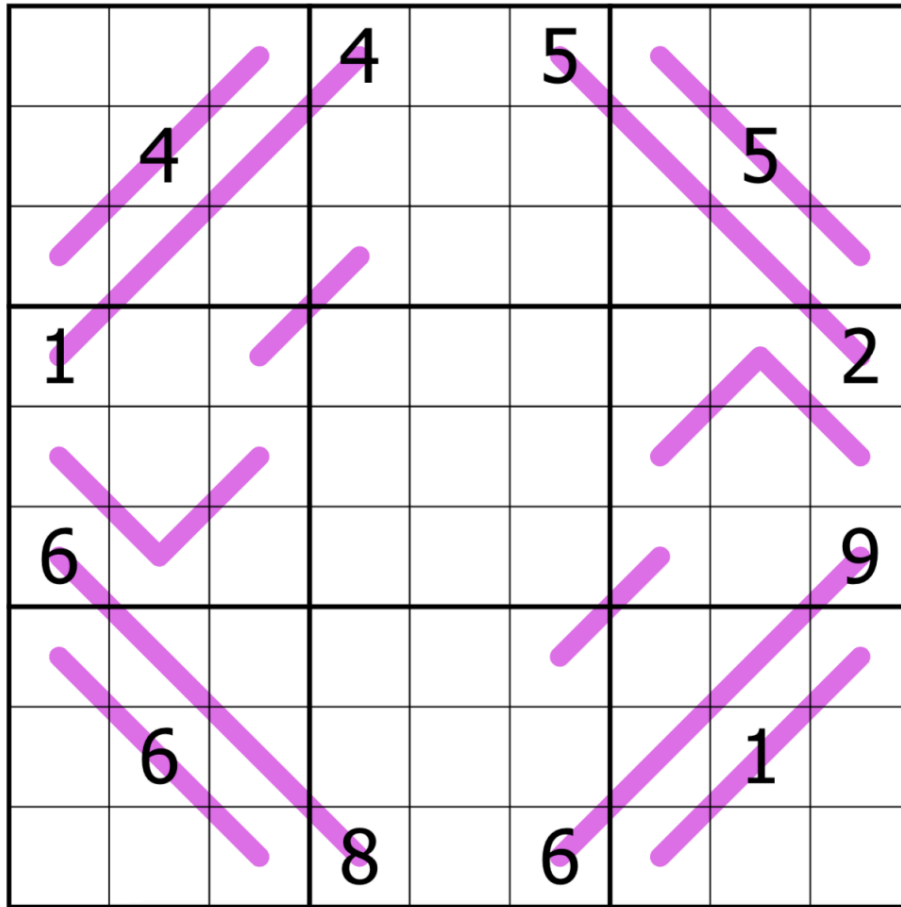
Play on SudokuPad: <https://sudokupad.app/philip-newman/20250603-tilting-x-windmill>

Play on f-puzzles: <https://f-puzzles.com/?id=28htwpvy>

**June 4, 2025: Renban**  
by clover!

walkthrough later - I'm still horribly ill and stuck a thousand miles from home until I'm well enough to travel. This puzzle came to me in a fever dream a couple days ago (really).

Normal sudoku rules apply. Each line contains a set of consecutive digits, which may appear in any order (such as 6 4 3 5).



SudokuPad: <https://sudokupad.app/d3je0x20k4>

**June 5, 2025: Fotomat**  
by Bill Murphy

Walkthrough for Squishy Save: <https://youtu.be/0VuM2Sz2s8I> (I know I'm one behind)

Brought a VR Headset home from work for the sole purpose of letting the girlfriend use Tiltbrush and Beat Saber for the first time and have politely introduced her to my theory that nobody looks good doing VR. (I got some good photos and some actually good photos)

Today's GAS is a **Diff3r3nc3 Sudoku**. It was just gonna be a regular consecutive sudoku, but we really went 3 sheets to the wind

*Normal Sudoku Rules Apply. Digits separated by a white dot must have a difference of 3. Not all dots are given.*

2								1
	4		③	③			2	
		1	③			9		
				③		③	③	
						③		
	③						③	
			③					
	③	③			③			
		3				③	8	
	7				③	③	5	
8								4

<https://sudokupad.app/f37rd0c6uu>

**June 6, 2025: 6/6**

by Philip Newman

Walkthrough of "Fotomat" by Bill:

[https://youtu.be/LEh3U\\_QdUZQ](https://youtu.be/LEh3U_QdUZQ)

Walkthrough of "Tilting X-Windmill" by me:

<https://youtu.be/Q5MXYIMPLec>

Walkthrough of "9c" and "SMUSH" by me:

<https://youtu.be/YraG7bAbSSk>

I actually have something of a backlog for once, but today's puzzle I set very recently. The Squishdoku and Tilted Latin Square were bumped up due to @clover?'s illness, and I didn't want to keep bumping things up (for *reasons* [see page at the end of this document for this spoiled text])... and since it's 6/6 today, *obviously* I had to theme it.

Today's GAS is a **Little Killer Math Pairs Sudoku!**

Normal sudoku rules apply.

**Little Killer: Digits along the indicated diagonals must sum to the total given (digits may repeat if allowed by other rules).**

**Math Pairs: Digits in cells separated by a white dot must have the sum (+), difference (-), ratio (/), or product (x) given.**

For example:

$$r1c1 - r1c2 = 6 \text{ OR } r1c2 - r1c1 = 6$$

$$r3c4 + r3c5 = 6$$

$$r1c3 / r2c3 = 6 \text{ OR } r2c3 / r1c3 = 6$$

$$r5c5 \times r6c5 = 6$$

↓↓↓ (The puzzle is on the next page) ↓↓↓

Little Killer: Digits along the indicated diagonals must sum to the total given (digits may repeat if allowed by other rules).

Math Pairs: Digits in cells separated by a white dot must have the sum (+), difference (-), ratio (/), or product (x) given.

The puzzle is a 9x9 grid with 3x3 subgrids. The clues are as follows:

- Little Killer (sums of 6):**
  - Top-left to bottom-right diagonal: 6
  - Top-right to bottom-left diagonal: 6
  - Bottom-left to top-right diagonal: 6
  - Bottom-right to top-left diagonal: 6
- Math Pairs (circled numbers with operators):**
  - (1,1) and (1,2): 6-
  - (2,2) and (2,3): 6/
  - (3,2) and (3,3): 6-
  - (4,1) and (4,2): 6-
  - (4,3) and (4,4): 6+
  - (5,1) and (5,2): 6/
  - (5,4) and (5,5): 6-
  - (5,6) and (5,7): 6-
  - (6,2) and (6,3): 6-
  - (6,4) and (6,5): 6x
  - (6,6) and (6,7): 6-
  - (7,2) and (7,3): 6+
  - (7,7) and (7,8): 6-
  - (8,5) and (8,6): 6+
  - (8,7) and (8,8): 6-
  - (9,6) and (9,7): 6/
  - (9,8) and (9,9): 6-

Play on SudokuPad: <https://sudokupad.app/philip-newman/20250606-66>

Play on f-puzzles: <https://f-puzzles.com/?id=24yxx78r>

## June 7, 2025: Four Years

by clover!

Walkthrough for Philip's 6/6: [https://youtu.be/V7fx8l\\_xbZg](https://youtu.be/V7fx8l_xbZg)

Good morning, friends!

I promised you all a few things, years ago, and one of them was this: if anything about GAS was changing, I'd tell you about it. Well, here we are, on the morning of GAS's fourth birthday: changing.

I hope a lot of you already know [Grandmaster Puzzles](#). GMP is a puzzle site, run by renowned solver (and SudokuCon presenter!) Thomas Snyder, that was known for many years for its daily, free, high-quality puzzle blog. GMP shuttered its daily puzzle content in January of this year. But Thomas returned to the blog a few months ago, with [a tantalizing announcement](#):

My proposal is to commit to Sudoku and see what comes when we are truly together and not hesitant about our shared relationship.

And that's where GAS comes in. Starting now, on the first day of our fifth year of daily puzzles, we're moving house. We're still going to post GAS here, and you can still discuss it here - but you'll also be able to collect your party hats and check out bonus content - including Thomas's mind-boggling solve times and the occasional speed solving replay - over on GMP. Today's puzzle will appear there later this morning; why not go leave us a friendly comment if it's up by the time you see this?

Oh wait, you wanted a puzzle to solve today, too?

↓↓↓ (The puzzle is on the next page) ↓↓↓

In this **up/down sudoku**, normal sudoku rules apply. Along each gray line, every digit is either higher than all of the digits it is directly connected to, or lower than all of the digits it is directly connected to. (Note that this results in a pattern of high/low/high/low along the length of each line).

7		3		4		9		2
1			2		8			5
		1					5	
	3					2		
5			6		9			1
3		9		8		5		6

SudokuPad: <https://sudokupad.app/26rwy5ujt>

**June 8, 2025: Shut Up**  
by Bill Murphy

Walkthrough for Renban: <https://youtu.be/5Lrq5YvawN8>

Walkthrough for Four Years: <https://youtu.be/IVbYd2-79QQ>

Today's GAS comes courtesy of an absolutely disgustingly priced pint of peroni and my pick for saddest song of 2025, this is the mindset I need to make **Antiknight Sudoku** apparently. (I'm fine, I swear)

*Normal Sudoku Rules Apply.*

*Antiknight: Cells a chess knight's move apart cannot contain identical digits.*

1		3		4		7		9
	2		4		9		3	
4		5		3		8		6
	6		5		8		9	
7		8		9		5		3

<https://sudokupad.app/bill-murphy/20250608-shut-up>

## June 9, 2025: Granularly Amassable Sudoral

by Philip Newman

Walkthrough of "Shut Up" by Bill:  
<https://youtu.be/wTsU3wwS7S8>

If you've been solving with us for a while, you may remember a very *detailed and accurate* tour of my house that I gave in the form of a Slow Thermo Sudoku while we had no AC. We've had our system for three and a half years, and *something* has gone wrong with it every summer. This year, it didn't even wait for proper summer. It's as if the capacitor knew I had today's puzzle scheduled and blew out for the memes.

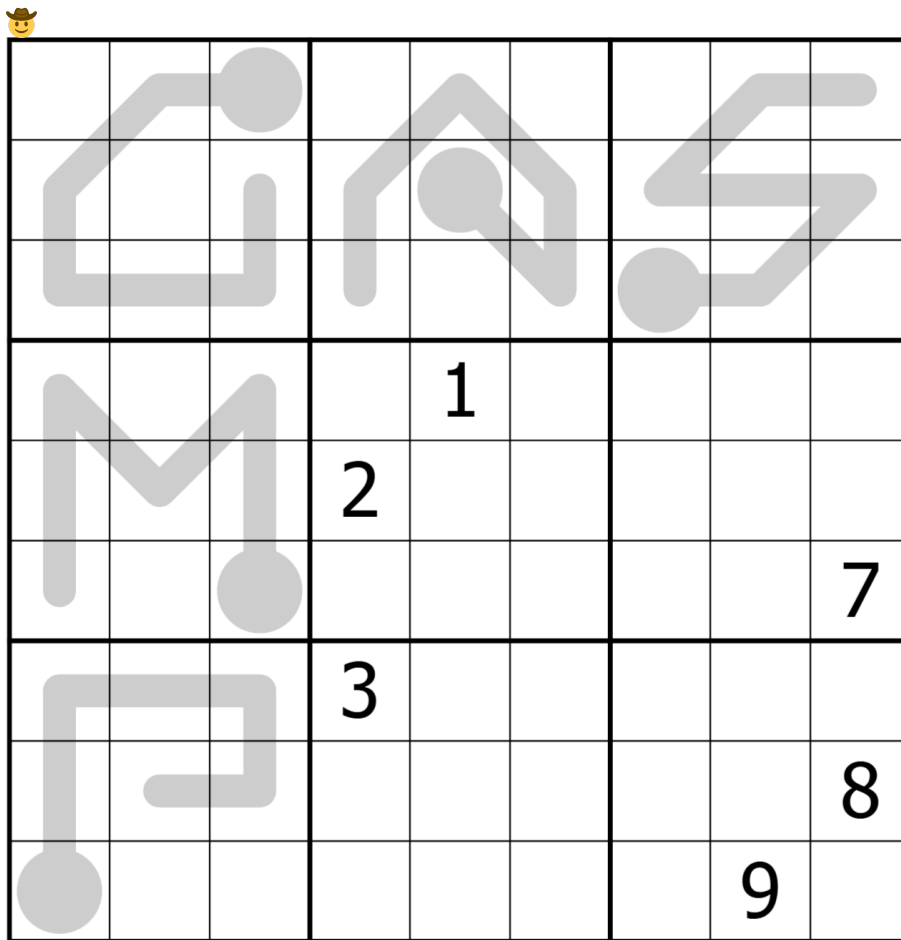
(All good here, though; it was a quick fix, and it only got to 86F in the house. 😊)

Today's GAS is a **Thermo Sudoku**!

Normal sudoku rules apply.

**Thermo:** **Digits along thermometers must strictly increase from bulb to tip.**

This one could feel a bit long due to the constraints of theme and aesthetics. >\_>



Play on SudokuPad:

<https://sudokuapp.philip-newman/20250609-granularly-amassable-sudoral>

GAS on GMPuzzles: <https://www.gmpuzzles.com/blog/tag/gas/>

## June 10, 2025: Sum Dashes

by clover!

Walkthrough: later!

Today's **sum dashes** GAS spells "GOOD PUZZLE, LOL" in Morse code. Don't fact-check me.

Normal sudoku rules apply. If a horizontal dash appears in a cell, the digit in that cell is the sum of the digits to its immediate left and right. If a vertical dash appears in a cell, the digit in that cell is the sum of the digits immediately above and below it.

	—	7	—		—		5	
4	5						7	
		—						6
2						—		
	4						3	8
	6		—		—	7	—	

SudokuPad: <https://sudokupad.app/czi8edrb6p>



## June 12, 2025: Tatooine Thursday?

by Philip Newman

Walkthrough of "234 Outside III" by Bill:

<https://youtu.be/uGK7PjuA7jo>

A bit of GAS history! (~~I'm sure many of you will remember this and are already traumatized by the screenshot.~~ I wrote this before I knew discord was having an issue with image uploads... Even discord doesn't want to see this puzzle.)

The first sudoku I ever published (not the first sudoku I made, and certainly not the first *puzzle* I published) was an infamous Classic Sudoku called Tatooine Sunset. When GAS started, I really wasn't known for easy puzzles (some would say I'm still not >\_>), and I wasn't particularly known for variant puzzles either. What I was known for was posting (mostly hard) classics on a regular basis in [#sudoku-recommendations](#) (Pi Mondays, Tatooine Tuesdays, etc.), which is part of why I was invited to join the team making daily puzzles when these channels split off.

We can't have our new collaboration with Grandmaster Puzzles go on without a Tatooine, and my next Tuesday posting is too far away, so...

Today's GAS is a **Classic Sudoku!**

Normal sudoku rules apply. And that's it!

This one could feel a bit long due to the constraints of being a Tatooine puzzle. >\_>

↓↓↓ (The puzzle is on the next page) ↓↓↓

# Classic Sudoku



		1	2					3
	4			5			6	
	5			6			4	
		2	3					1
					7	8		
					8	9		2
		3	1					
	6			4		5		

Play on SudokuPad: <https://sudokupad.app/philip-newman/20250612-tatooine-thursday>  
GAS on GMPuzzles: <https://www.gmpuzzles.com/blog/tag/gas/>

## June 13, 2025: Fives

by clover!

Walkthrough: later!

GAS on GMPuzzles: <https://www.gmpuzzles.com/blog/tag/gas/> (Have you checked out the GMP server yet? It's here: <https://discord.gg/V6pCEdhF<sup>1</sup>>)

Good morning, friends! Today's GAS is **five sudoku**, I mean, a **fives sudoku**. Normal sudoku rules apply. Digits separated by a white circle either sum to 5 or have a difference of 5. Not all possible circles are necessarily given.

	5	7		8	5	1	5
5			9				5
	5						
5		6	5				
			5	5			
	5	2		5		6	5
5			6	5	7		
				5			9
9			3		5		5
	5	7	5	9		5	8

SudokuPad: <https://sudokupad.app/fzk72jup88>

---

<sup>1</sup> Note from typesetter: this link no longer works

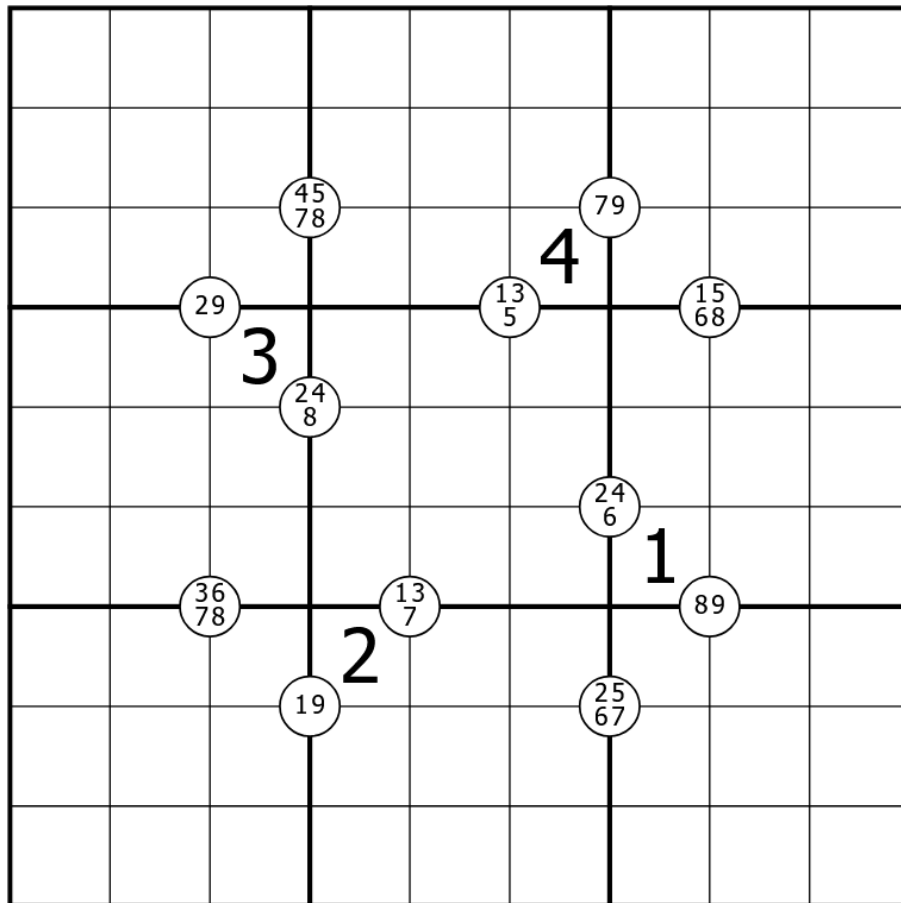
**June 14, 2025: Seeing Stars**  
by Bill Murphy

Walkthrough for Fives: <https://youtu.be/UVVMUX5cRKw>

Charli XCX was right, it's truly Turnstile Summer (well it's winter here, but i'm sure they'll headline laneway or something)

Today's GAS is a **Quadruples Sudoku**! Inspired by my desire to lean in to all of my classic impulses rather than fight them

*Normal Sudoku Rules Apply. Digits in white circles must appear in the surrounding four cells.*



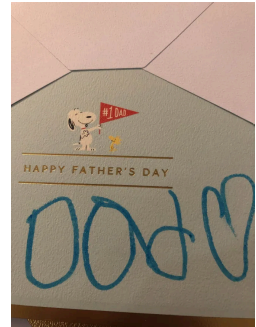
<https://sudokupad.app/rj0rmxi2vz>

**June 15, 2025: Sharrows**  
by Philip Newman

Walkthrough of "Seeing Stars" by Bill:  
<https://youtu.be/7IMoVy4Ptgg>

It's Father's Day here in the US, so happy day to any dads out there. As most of you know, I have two kids, and they made me very sweet cards and painted little trophies for me. 🏆🥰🏆

Zoe is still working on her handwriting, and so her "Dad" came out a little messy. That would have been fine, I am fluent in Zoe-ese, but... I opened it upside-down. [see the spoiledred text at the end of this document]



Today's GAS is an **Arrow Sudoku!**

Normal sudoku rules apply.

**Arrow: Digits along arrows must sum to the circled total.**

This one... shouldn't feel too long! 🙌

🧐

		7	6		
			3		
	7	6	4	3	
		4	3		

Play on SudokuPad: <https://sudokupad.app/philip-newman/20250615-sharrows-v2>  
GAS on GMPuzzles: <https://www.gmpuzzles.com/blog/tag/gas/>

**June 16, 2025: #5 Is Alive**  
by clover!

Walkthrough for Philip's "Sharrows": <https://youtu.be/jIM-1GCZotg>

Good morning, friends! Today's GAS is a celebration of all of the unsung dinosaurs that are still hanging around. Birds. I'm talking about birds. (I was 36 years old, yesterday, when I learned that birds are technically reptiles under the phylogenetic classification system).

Today's GAS is a **Number 5 Is Alive sudoku**! Normal sudoku rules apply. Digits do not repeat in cages. Within each cage, the sum of the digits ends in a 5 (5, 15, 25, 35, or 45).

		1					8	
			1					2
9		2						
	9		2					4
					3			
				5				
3								
	4		5					

SudokuPad: <https://sudokupad.app/53yojihd1v>

## June 17, 2025: One Rizla

by Bill Murphy

Walkthrough for Number 5 is Alive: <https://youtu.be/CILgBhgOCG0>

Speaking of reptiles, I still do the crocodile arm thing to remember which way around to put the < or > symbol. I'm 33 and have a math degree. For some reason I feel no shame about remembering that the nitrogenous bases Adenine and Thymine bond and Cytosine and Guanine bond become A & T are made from straight lines and C & G are curved, but i still cringe a lil at the crocodile jaws for some reason.

Also because I didn't say it already, happy pride month y'all! (I cannot believe writing about nucleic acids made me remember this)

Today's GAS is a **Zipper Lines Sudoku!**

*Normal Sudoku Rules Apply. Digits equidistant from the center of each lavender line must sum to the digit in the center of the line. (eg.  $R1C2 + R1C6 = R1C3 + R1C5 = R1C4$ )*

		5	6					
	9					4		
							2	
				8			7	
5				3				
1								
	8					5		
				8	6			

<https://sudokupad.app/gozohwt6ti>

## June 18, 2025: Octavianus

by Philip Newman

Walkthrough of "One Rizla" by Bill:

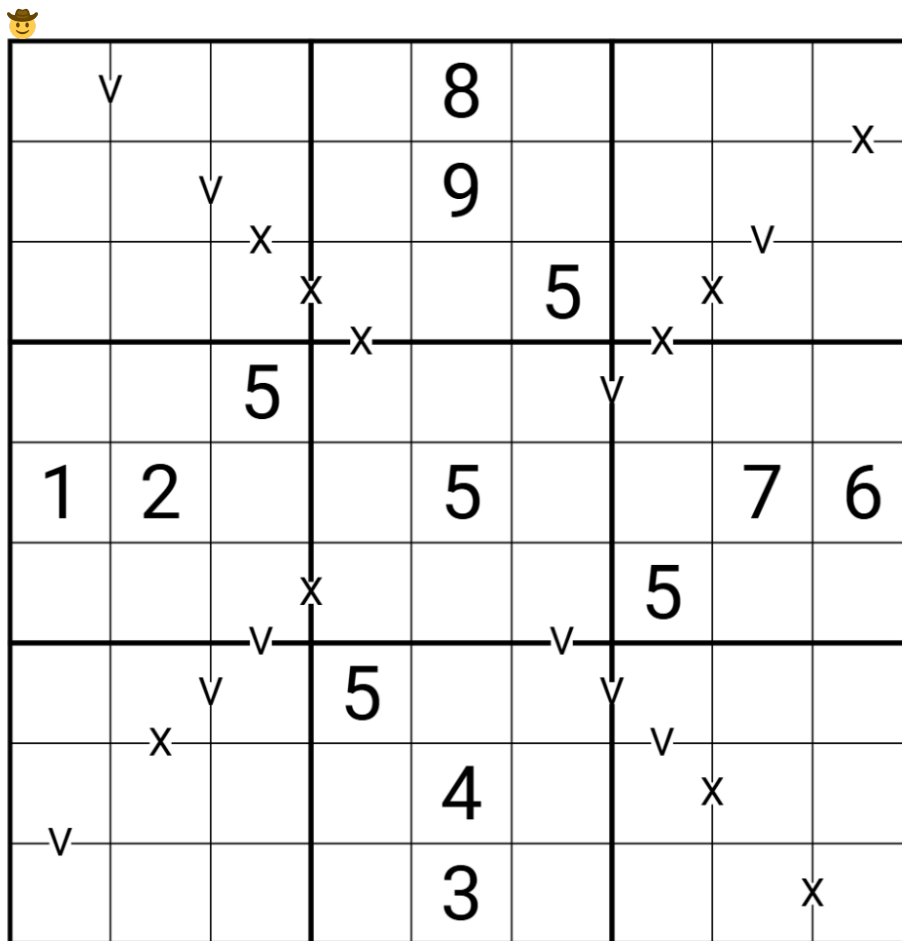
<https://youtu.be/MeUKbBq4Zlw>

I have a few puzzles coming up which I am quite pleased with aesthetically, but this one may be my favorite. 🤔

Today's GAS is an **XV Pairs Sudoku**!

Normal sudoku rules apply.

**XV Pairs: Digits in cells separated by a 'V' must sum to 5; digits in cells separated by an 'X' must sum to 10.** (No negative constraint - other pairs of adjacent digits may sum to 5 or 10.)



Play on SudokuPad: <https://sudokupad.app/philip-newman/20250618-octavianus>

GAS on GMPuzzles: <https://www.gmpuzzles.com/blog/tag/gas/>

**June 19, 2025: Sum Adjacent**  
by clover!

Walkthrough for Philip's "Octavianus": <https://youtu.be/-BnEQBNjaU0>

Today's puzzle on GMP:

<https://www.gmpuzzles.com/blog/2025/06/sum-adjacent-sudoku-by-clover/>

Good morning, friends! Today's GAS saw a blazing-fast solve time from Thomas - but not nearly as fast as his time on my next puzzle, which is also [see spoiled text at the end of this document]

Today's GAS is a **sum adjacent sudoku**. Normal sudoku rules apply. The digit in each circle is the sum of all digits orthogonally adjacent to the circle cell.

	⑨				⑧		7
				8		6	
	7			⑥			
					⑨		⑧
	8			1		7	
⑨		⑦					
			⑧			9	
	6			9			
7		⑨				⑧	

SudokuPad: <https://sudokupad.app/clover/20250619-sum-adjacent>

# June 20, 2025: Weighted Little Killer

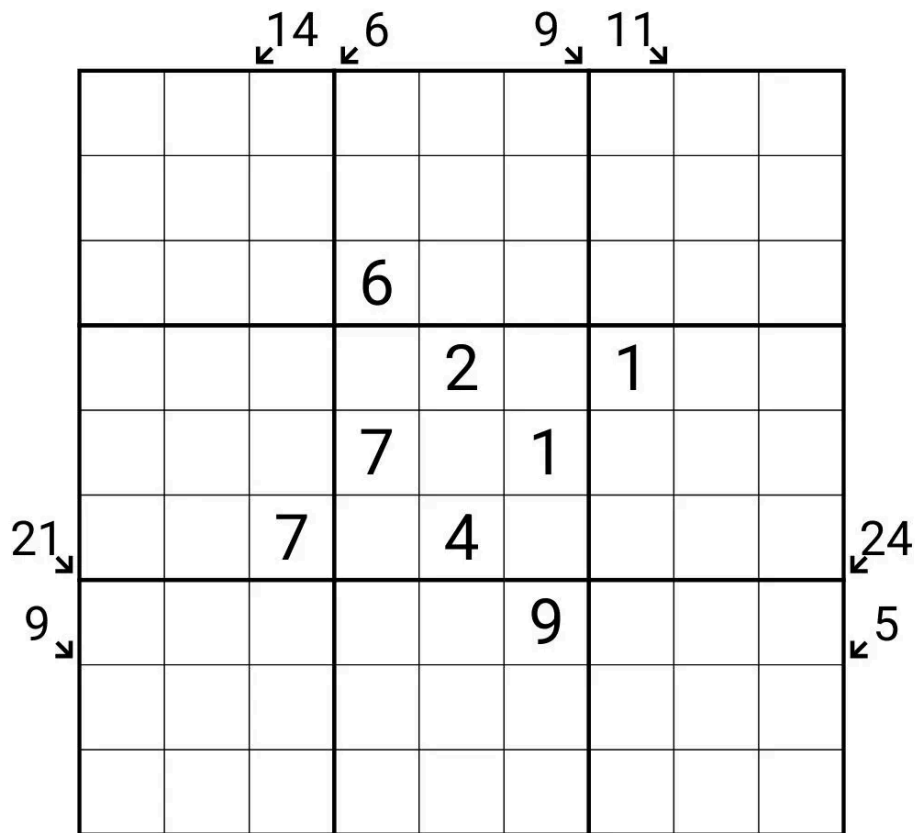
by Bill Murphy

Walkthrough for Sum Adjacent soonish

of all the most feared constraints that aren't meme constraints, little killer has to be up there, but I think it's fine

So I'll be back in three days with an actual little killer, but until then this is a **Weighted Little Killer** Sudoku for you to practice.

*Normal Sudoku Rules Apply. Digits along indicated diagonals must sum to the given total and must increase as you go down the grid. (Eg.  $R1C2 + R2C1 = 14$  and  $R2C1 > R1C2$ )*



<https://sudokupad.app/pptlff00lu>

## June 21, 2025: Emerald Isle

by Philip Newman

Walkthrough of "Weighted Little Killer" by Bill:

<https://youtu.be/DUdnMQw0zEU>

Nothing to do with today's puzzle, but I noticed the short URL for Bill's puzzle while getting the walkthrough posted. *Only poetry or madness could do justice to the noises* but I'm now convinced "ppltf00lu" is the sound Cthulhu makes when he sneezes.

Today's GAS is a **German Whispers!**

Normal sudoku rules apply.

**German Whispers: Digits in cells directly connected by a line must differ by at least 5.**



		2						
					8			
				4				2
	4		6		2			
		6				4		
			8		4		6	
8				6				
			2					
						8		

Play on SudokuPad: <https://sudokupad.app/philip-newman/20250621-emerald-isle>

GAS on GMPuzzles: <https://www.gmpuzzles.com/blog/tag/gas/>

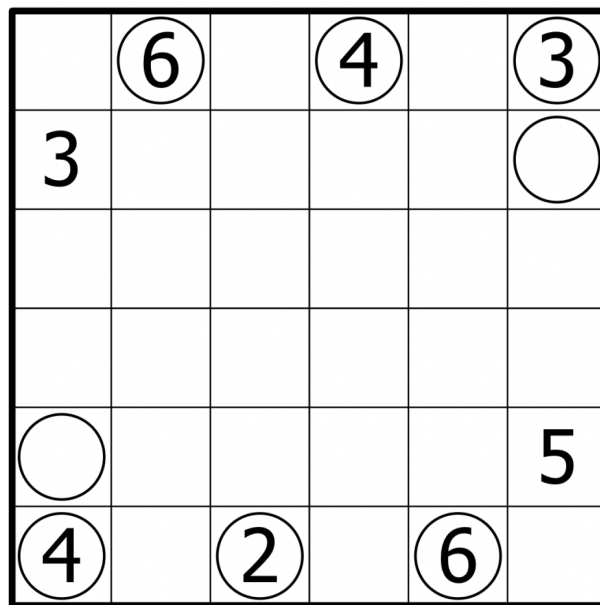
## June 22, 2025: A Little Bit of Chaos

by clover!

Walkthrough for Philip's "Emerald Isle": <https://youtu.be/64RuOY6-bf0>

I assure you, I didn't set today's puzzle just because it makes me smile to know that GMP is posting a chaos construction!

Divide the grid into six non-overlapping, orthogonally connected six-cell regions. Fill the grid with the digits 1-6 so that each digit appears exactly once in each row, column, and region, and so that the digit in each circle indicates how many of the (up to 9) adjacent cells, including itself, are in its same region.



SudokuPad: <https://sudokupad.app/7wjytw608>

## June 23, 2025: New Body Rhumba

by Bill Murphy

Walkthrough for Sum Adjacent: [https://youtu.be/8w\\_4IMfY0b8](https://youtu.be/8w_4IMfY0b8)

Y'know, I do think my love for **Little Killer Sudoku** does come from the idea that it sounds like something an Australian Dad would call his kid.

Here are a bunch of Australianisms that I don't know if they've made it around the world (if they've made it to you, congratulations! ONE OF US ONE OF US), what they translate to is under a spoiler if you'd like to do a lil guessing game [see the spoiledred texts at the end of this document]

Getting into a bingle = [spoilered]

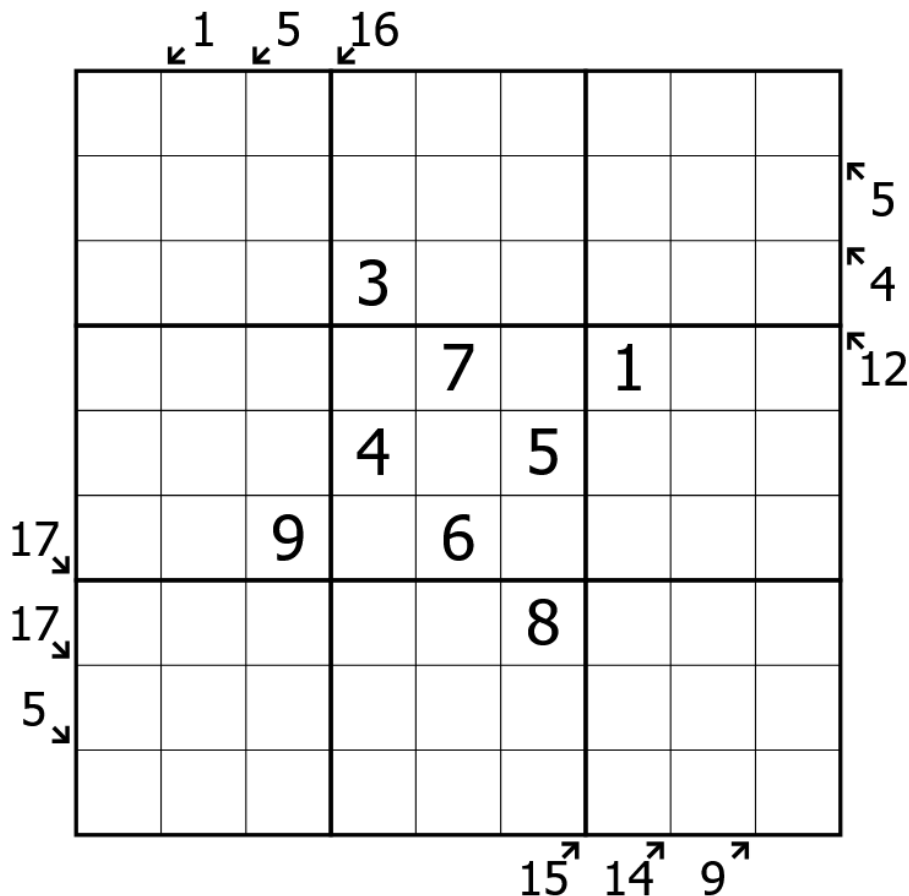
Having a Gaytime = [spoilered]

Having a squiz = [spoilered]

Having a piss-up = [spoilered]

and it's also very important to me that y'all understand that chucking a sickie and having a sick one are two very different things. we're a serious country.

*Normal Sudoku Rules Apply. Digits along indicated diagonals must sum to the given total.*



<https://sudokupad.app/7ff14kceq>

**June 24, 2025: Tilting Kropmills**  
by Philip Newman

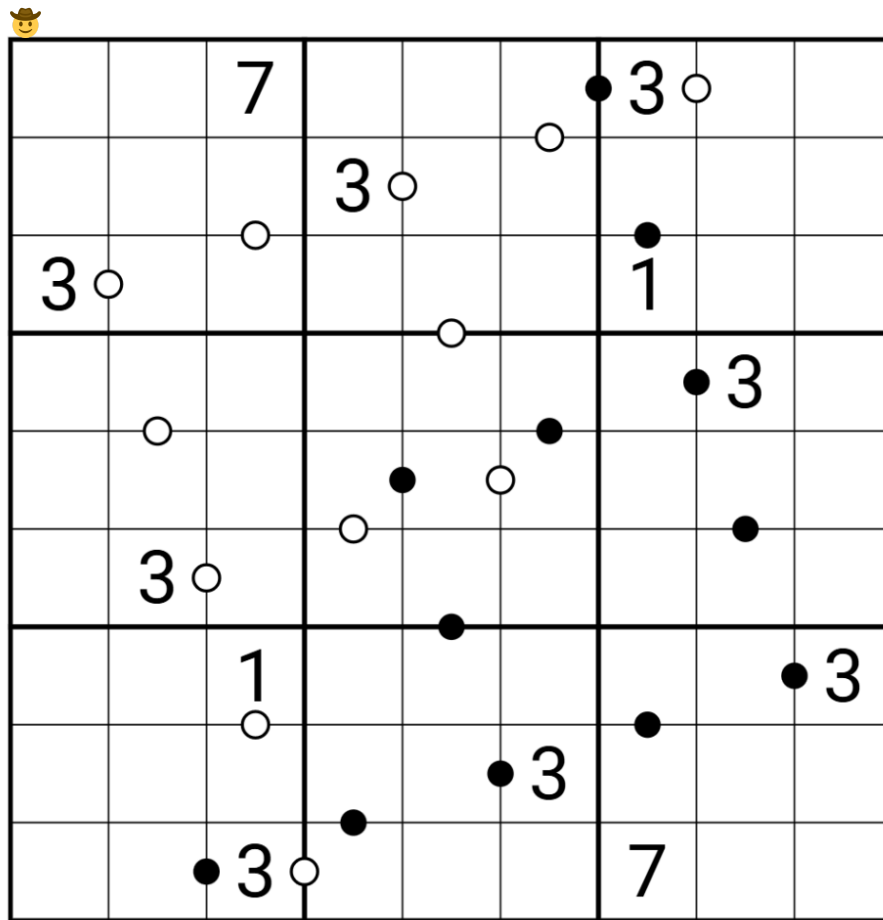
Walkthrough of "New Body Rhumba" by Bill:  
[Later!]

Aaaaaaaaaaaaaah. (Having one of those weeks.)

Today's GAS is a **Kropki Pairs Sudoku!**

Normal sudoku rules apply.

**Kropki Pairs: Digits in cells separated by a white dot must be consecutive (have a difference of 1); digits in cells separated by a black dot must have a ratio of 2:1. (No negative constraint - other pairs of adjacent digits may have a difference of 1 or ratio of 2:1.)**



Play on SudokuPad: <https://sudokupad.app/philip-newman/20250624-tilting-kropmills>  
GAS on GMPuzzles: <https://www.gmpuzzles.com/blog/tag/gas/>

## June 25, 2025: Surplus Sudoku

by clover!

Walkthrough for Philip's "Tilting Kropmills": <https://youtu.be/6Mu2d4EiHaE>

Good morning! I woke up to discover that a completely unrelated hobby server I'm part of was imminently being deleted, so I've been directing people into the virtual lifeboats all morning. How's your morning going?

Unrelated, did you know that whenever we post late, you can go to GMPuzzles to get a sneak preview of the day's post at 9am Pacific time every day? Here's today's: <https://www.gmpuzzles.com/blog/2025/06/surplus-sudoku-by-clover/>

And with that, today's puzzle is a **Surplus Sudoku**! Insert a number from 1 to 8 into each cell so that no number repeats in any row or column. Some regions appear with more cells than there are numbers in the indicated range. Some number(s) repeat in these regions, but all numbers in the indicated range must appear at least once within each of these regions.

1	2	3	6				
					1	2	3
		7					
3					7		
		6					5
					8		
2	3	4					
				7	2	3	4

SudokuPad: <https://sudokupad.app/3zowllw811>

# June 26, 2025: Czech Outsider III

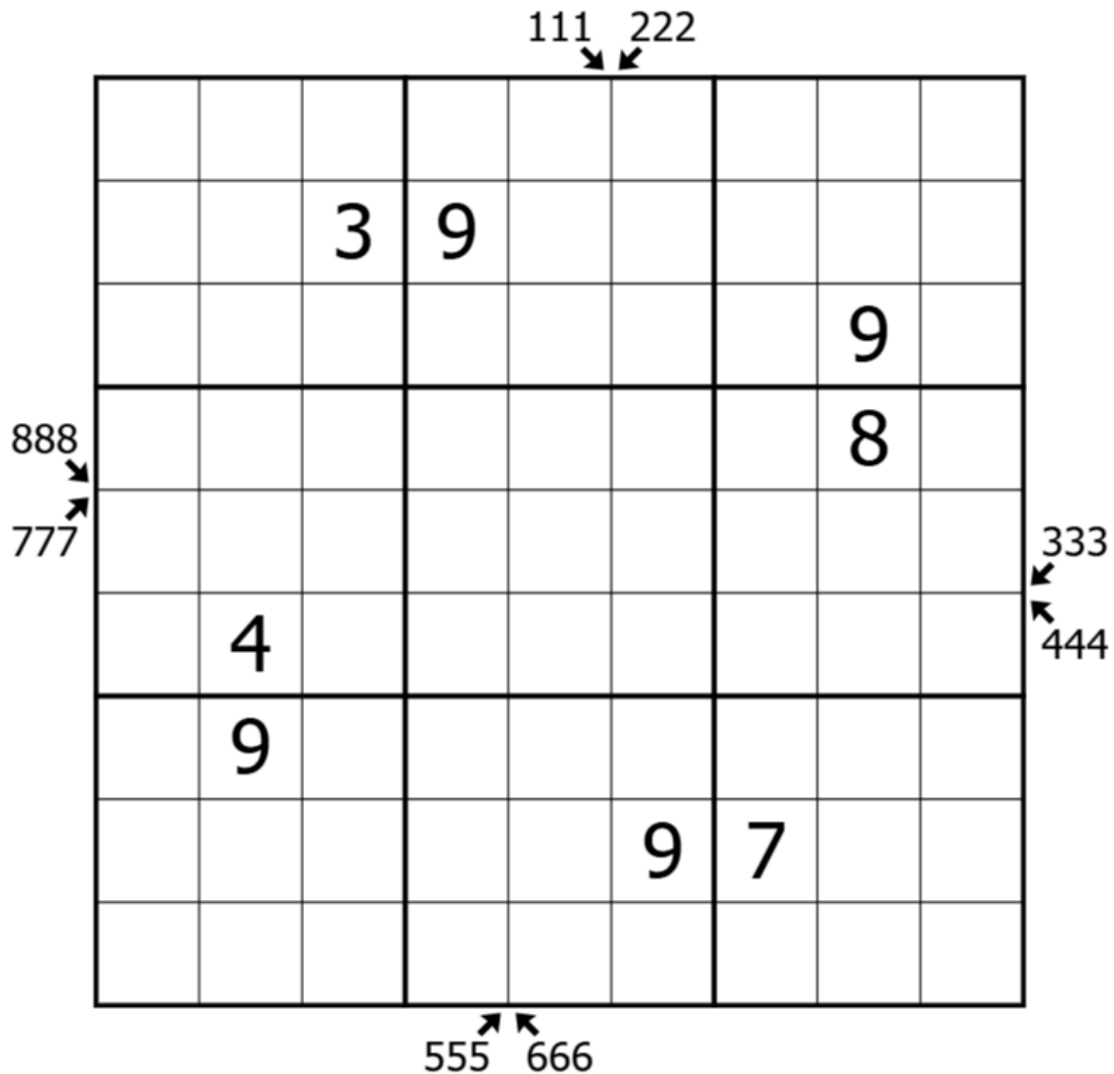
by Bill Murphy

kthrough for Surplus Sudoku: <https://youtu.be/jGGh8YkCTw0>

Id like to take this intro opportunity to shout out Gubbins, that game is cool

Today's GAS is a Czech Outsider Sudoku!

*Normal Sudoku Rules Apply. Clues outside the grid give digits that must appear along the indicated diagonal. If a digit appears multiple times, it must appear that many times along the diagonal.*



<https://sudokupad.app/9qjasn1kgy>

## June 27, 2025: Magic Blue

by Philip Newman

Walkthrough of "New Body Rhumba" by Bill:

<https://youtu.be/hwM42kl7ZW4>

Walkthrough of "Czech Outsider III" by Bill:

<https://youtu.be/pDFBG9InLVc>

This week has completely gotten away from me. I was planning to finally release the free pack I hinted at (with the two Squishdoku earlier in the month), but between work and some allergy/sinus/cold thing in our house that hasn't happened yet. Maybe by my next post!

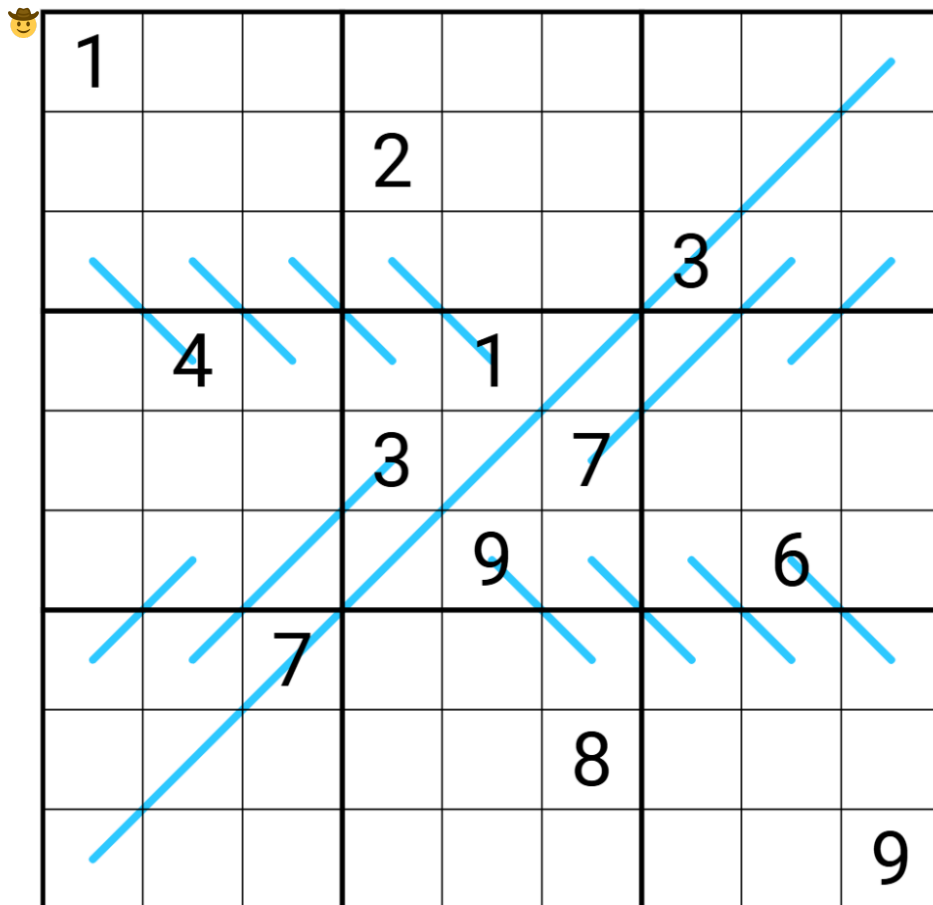
Today's GAS is a **Region Sum Lines Sudoku!**

Normal sudoku rules apply.

**Region Sum Lines:** Along each line, the digits in every region it passes through have the same sum. (If multiple disconnected segments of a line pass through a single region, each segment separately sums to the total for the line.)

For example:  $r1c9 + r2c8 + r3c7 = r4c6 + r5c5 + r6c4 = r7c3 + r8c2 + r9c1$

A bit spicy again today! (To clear my sinuses, obv obv)



Play on SudokuPad: <https://sudokuapp.philip-newman.com/20250627-magic-blue>

GAS on GMPuzzles: <https://www.gmpuzzles.com/blog/tag/gas/>

## June 28, 2025: Deficit Sudoku

by clover!

Walkthrough for Philip's "Magic Blue":

<https://youtu.be/pEiyabTYJj8>

Today's GAS is a **deficit sudoku**!

Fill the grid with the digits 1-8 so that each digit appears exactly once in each row and column, and each digit appears at most once in each outlined region.

1	2	3					
	5			3			
			5	6	7		
				5			
			8				
		1	2	4			
			3			8	
					1	4	3

SudokuPad: <https://sudokupad.app/4u6rwg45ia>

## June 29, 2025: Count Different (Arrows)

by Bill Murphy

Walkthrough for Deficit Sudoku: <https://youtu.be/f6AX9xRmYHc>

I'm out with my girlfriend for our 2 year anniversary tonight. Didn't tell her where we were going but told her what we were eating. Accidentally let slip the suburb where the restaurant is three hours before, she *knew* exactly where I had booked, squealed and said she absolutely loves that place. If that's not a sign of being on each other's wavelength, I dunno what is.

Today's GAS is a **Count Different (Arrows)** Sudoku! The bracket is fundamental because there are so many different variants under the bracket of "Count Different" that if I wasn't **so incredibly sure\*** of what I'm doing for April 1st next year, I would do every single possible version of it I could find.

*Normal Sudoku Rules Apply. Digits in the bulb give the number of unique digits along the arrow.*

			3		4			
5	7	9				4		
			2				7	
6						9		3
3		5						1
	2				7			
		7				5	2	9
			8		3			

<https://sudokupad.app/12k6s0iyto>

## June 30, 2025: Death by Tuple

by Philip Newman

Walkthrough of "Count Different (Arrows)" by Bill:  
<https://youtu.be/Bn8zyKFuUKY>

Today's GAS is a **Killer Sudoku!**

Normal sudoku rules apply.

**Killer: Digits in cages cannot repeat and must sum to the total given.**



	35			15				20
		3			7			
	4	11		5	24		14	7
					8			
23			12					
	6	6		15			16	
					9			15
10		13			17			
		15						

Play on SudokuPad: <https://sudokupad.app/philip-newman/20250630-death-by-tuple>  
GAS on GMPuzzles: <https://www.gmpuzzles.com/blog/tag/gas/>

[typesetters' note: See about Philip's Bonus Pack on the next page]

## Bonus Pack!

Back in October 2023 I released a Patreon preview pack dubbed the "Cronch" Pack - these were outtakes from my GAS theme in September (1-9 as given digits along the top-left to bottom-right diagonal). I'm finally doing a second Cronch Pack, which I teased at the beginning of the month with two extra Squishdoku puzzles. There's no real theme here (though quite a few relate to being nerd sniped in [#theory-and-programming](#)), just some bonus Philip-style puzzles. A couple of them are especially nasty! I'll try to do walkthroughs of them at some point (probably next week).

July 2025 Cronch Pack: <https://www.patreon.com/posts/june-2025-cronch-132795949>

And if you missed the previous Cronch Pack, it's here:

<https://www.patreon.com/posts/patreon-preview-90979065>

Also also, the GAS Leak for April *should* be available this week. Nag me about it Wednesday if I haven't posted it already!

[Note from Philip: 🤦🤦🤦🤦🤦 The April leak was actually available in September, and it is now November.]

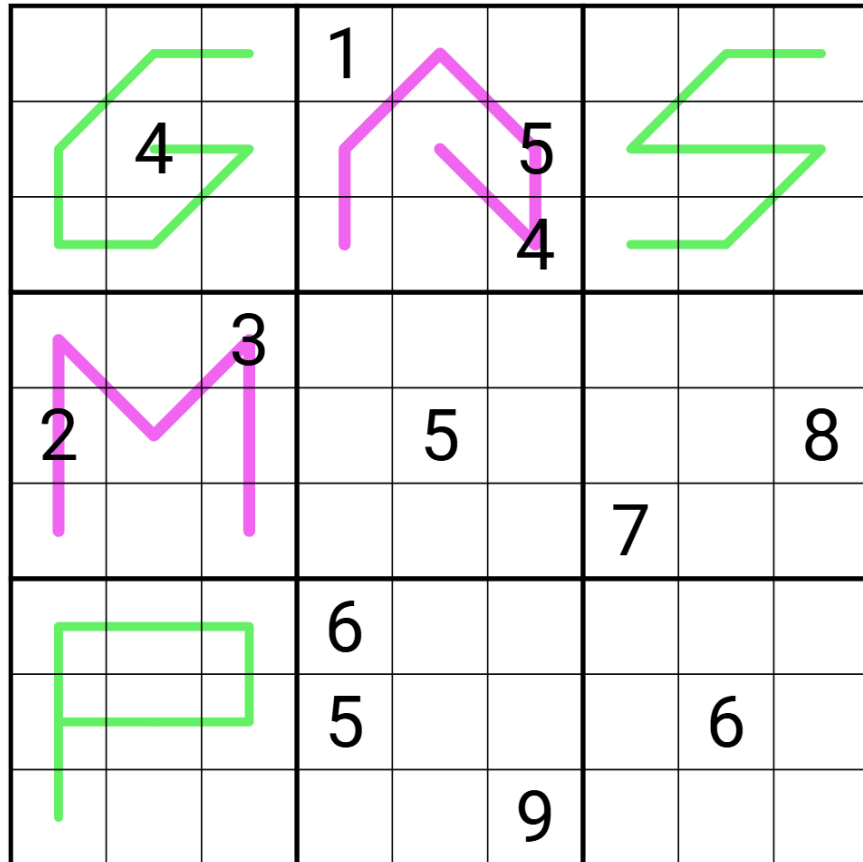
### Bonus 1: German Whispers Renban

by Philip Newman

Normal sudoku rules apply.

German Whispers: Digits in cells directly connected by a green line must differ by at least 5.

Renban: Digits along purple lines must form a non-repeating consecutive set, in any order. (For example, a 4-cell renban line could be 4352, but not 5679 or 2312.)



SudokuPad: <https://sudokupad.app/1k3c1ctuwc>

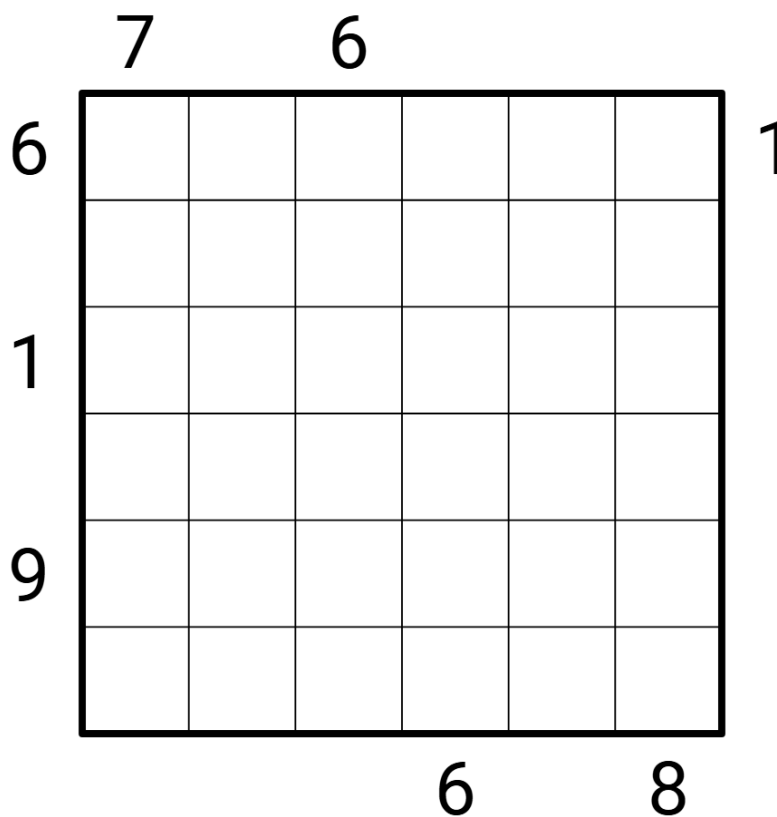
## Bonus 2: Chaos Construction X-Sums

by clover!

Chaos Construction: Divide the grid into six non-overlapping, orthogonally connected six-cell regions. Fill the grid with the digits 1-6 so that each digit appears exactly once in each row, column, and region.

X-Sums: Clues outside of the grid tell you the sum of the first X digits in that row or column, counting from the direction where the clue appears, where X is the first digit (closest to the clue) in that row or column. For instance, a row starting with 3 1 6 might have a clue of 10 (3+1+6) to its left.

Also, if an X-Sums clue starts with X, then the first X digits in that row or column are in the same region, and the X+1th is in a different region. (In the above example, the 3, 1, 6 would be in the same region, and the fourth cell in the row would be in a different region.)



Penpa+: <https://tinyurl.com/2vt68fdn>

SudokuPad: <https://sudokupad.app/z8s3yrelvq> (no region check)

### Bonus 3: My Machines

by Bill Murphy

Normal Sudoku Rules Apply. Clues outside the grid give the sum of the first X digits seen from the direction of the clue, where X is the first digit seen from the clue.

							4	
1								
								5
	5							

Clues: (39) (5) (12) (39) (38) (5) (13) (6) (5) (17) (40) (35) (11) (5) (41)

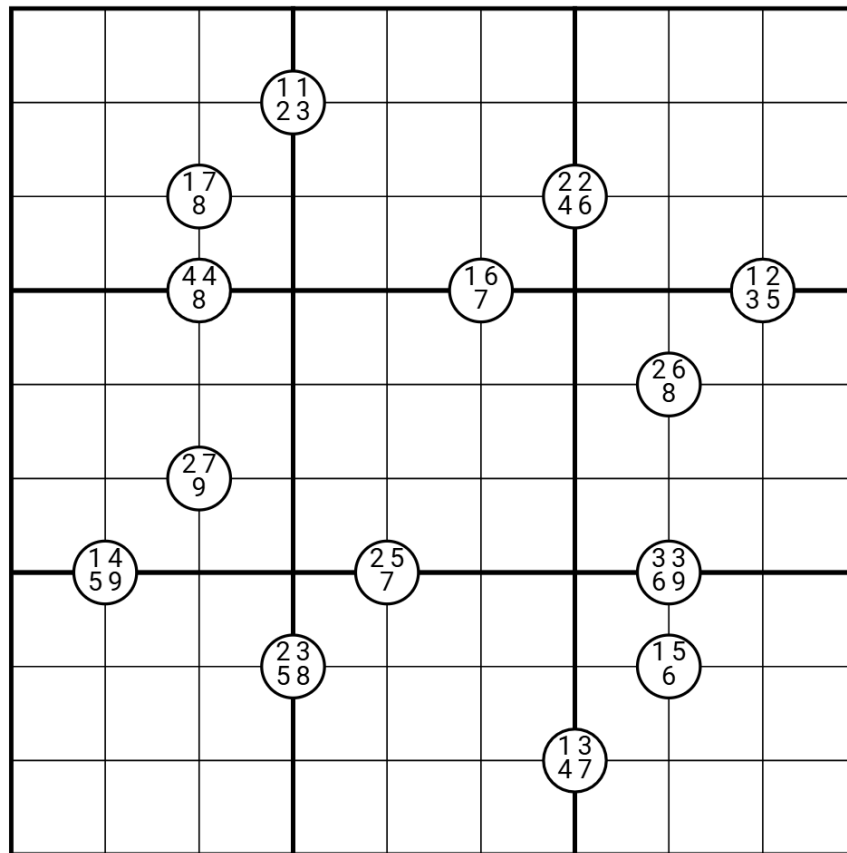
SudokuPad: <https://sudokupad.app/r5laa7oyzw>

### Bonus 4: Recurrence

by Philip Newman

Normal sudoku rules apply.

Quadruples: Digits in corner circles must appear in the surrounding four cells, in some order.



SudokuPad: <https://sudokupad.app/vksiwtz33k>

### Bonus 5: Delimited Kropki

by clover!

Normal sudoku rules apply.

Delimited Kropki: Along grey lines, adjacent digits cannot be consecutive or have a ratio of 2:1.

		2				4		
		7				1		
6	4	5				8	9	7
			4		2			
			1		3			
9	2	1				3	6	4
		8				7		
		6				2		

SudokuPad: <https://sudokupad.app/a5z2i6jsvu>

## Time Benchmarks

	 Two party hats	 One party hat	 Today's dinosaur:
June 1, 2025	8:00	20:00	I'mRunningOutOfUniqueSauropodsAgain Imrankhanshaheen
June 2, 2025	8:30	16:00	Competitive Conchoraptor <sup>2</sup>
June 3, 2025	10:00	25:00	Khanic Khanazeem
June 4, 2025	6:00	11:00	sick Scansoriopteryx
June 5, 2025	7:06	13:33	Simulated Segisaurus
June 6, 2025	7:42	18:03	Ketchup-covered Khetranisaurus
June 7, 2025	7:00	13:00	grandmaster Graciliraptor
June 8, 2025	7:30	14:00	Twenty Dollar Dahalokely
June 9, 2025	8:30	20:00	Overheated Oharasisaurus
June 10, 2025	6:30	12:00	dashing Dreadnoughtus
June 11, 2025	8:00	15:00	empathetic Ekrixinatosaurus
June 12, 2025	8:00	20:00	Quick Qaikshaheen
June 13, 2025	6:00	11:00	quintuplicated Quilmesaurus 
June 14, 2025	6:00	11:00	Trapped Under Isisaurus <sup>3</sup>
June 15, 2025	6:00	13:00	Nocked Nicksaurus
June 16, 2025	7:00	13:00	still-alive Sinornithoides
June 17, 2025	7:00	13:00	Memorable Mirischia
June 18, 2025	7:00	13:00	Tiberian Tobasaurus
June 19, 2025	6:00	11:00	small-digit Stokesosaurus
June 20, 2025	6:00	11:00	Threatening Tatankaceratops
June 21, 2025	8:00	15:00	Essential Europatitan
June 22, 2025	5:30	10:30	chaotic Kulindadromeus
June 23, 2025	8:00	15:00	Australian Australovenator
June 24, 2025	8:00	15:00	Speckled Sousatitan
June 25, 2025	7:30	14:00	excessive Echinodon
June 26, 2025	7:00	13:00	OKaatedocus
June 27, 2025	9:00	18:00	Sumptuous Sulaimanisaurus
June 28, 2025	7:00	13:00	deficient Daspletosaurus
June 29, 2025	7:00	13:00	Cotton Cumnoria
June 30, 2025	8:00	15:00	Sumptuous Sulaimanisaurus

<sup>2</sup> (Spongebob voice: *Magic...Conch..Shell?? YOU MEAN LIKE THIS??*)

<sup>3</sup> (that's a pretty good dinosaur joke to nobody else but me, i think)

## Hints and other spoiledred texts

### Spoiler for June 6, 2025

I actually have something of a backlog for once, but today's puzzle I set very recently. The Squishdoku and Tilted Latin Square were bumped up due to @clover?'s illness, and I didn't want to keep bumping things up (for reasons **madeyalook**)... and since it's 6/6 today, *obviously* I had to theme it.

### Spoiler for June 15, 2025:

Zoe is still working on her handwriting, and so her "Dad" came out a little messy. That would have been fine, I am fluent in Zoe-ese, but... I opened it upside-down. **I am dying from what the heart looks like.**

### Spoiler for June 19, 2025:

Good morning, friends! Today's GAS saw a blazing-fast solve time from Thomas - but not nearly as fast as his time on my next puzzle, which is also **a chaos construction**. That's right, you're going to see chaos construction on GMP. Don't @ me.

### Spoiler for June 23, 2025:

Getting into a bingle = **Being in a car accident**  
Having a Gaytime = **Eating an icecream**  
Having a squiz = **Taking a look**  
Having a piss-up = **Throwing a party**