

GAS Leak

Genuinely Approachable Sudoku
from the CtC Discord

Volume 52:

May 1 – May 31, 2025

Welcome to May!

We got a full month of GAS puzzles for you, one better than the other. Some are the standards, some are new or rare (e.g. median sudoku, anaglyph cages), some are standalone, others part of a series. And all are worth your while.

Have fun solving!

May 1, 2025: Deadly Maths

by Philip Newman

Walkthrough of "Between" by clover:

<https://youtu.be/0K6Xfx5wPZw>

This is the end of the **GAS** exploration of this particular Arrow theme... of course, I did make some harder ones, released yesterday on Patreon!

YMMV on how difficult you find today's - if you're very familiar with the variants involved and how they interact, you might fly through it and wonder why the times are so generous! But in case you need a nudge...

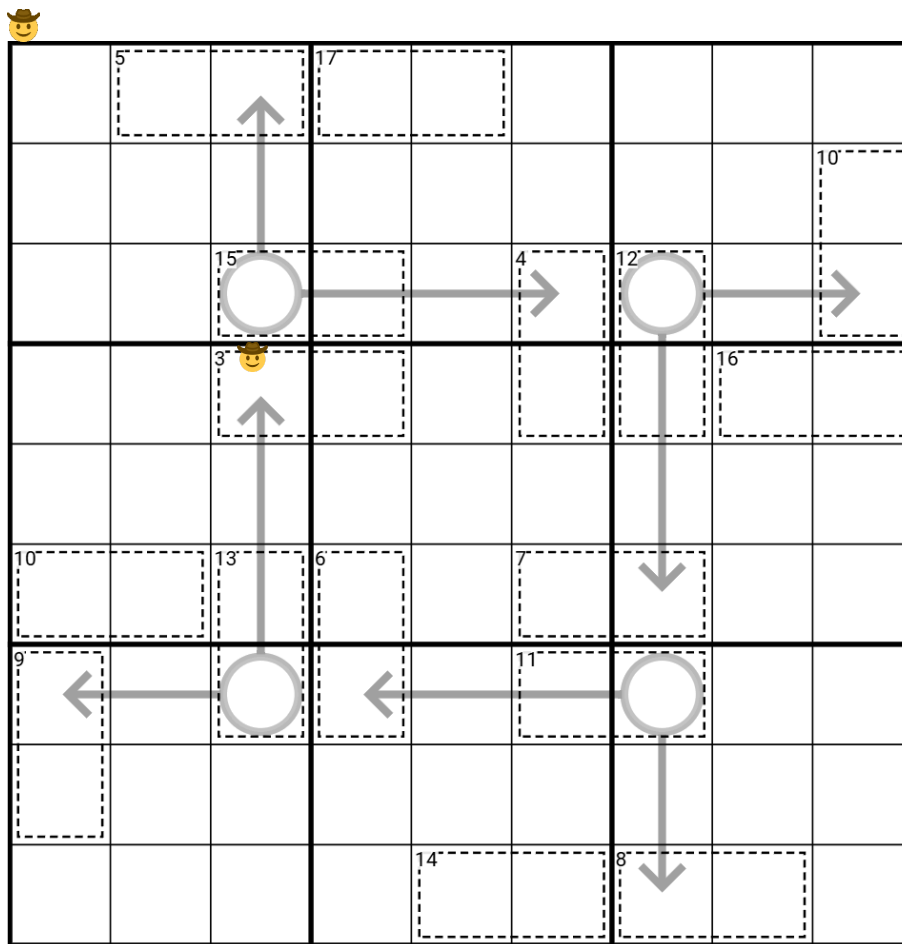
GAS 101: [see the Hints page near the end of this document]

Today's **GAS** is a **Killer Arrow Sudoku!**

Normal sudoku rules apply.

Killer: Digits in cages cannot repeat and must sum to the total given.

Arrow: Digits along arrows must sum to the circled total.



Play on SudokuPad: <https://sudokupad.app/philip-newman/20250501-deadly-maths>

Play on f-puzzles: <https://f-puzzles.com/?id=23jtjv7>

May 3, 2025: Anaglyph Cages

by Bill Murphy

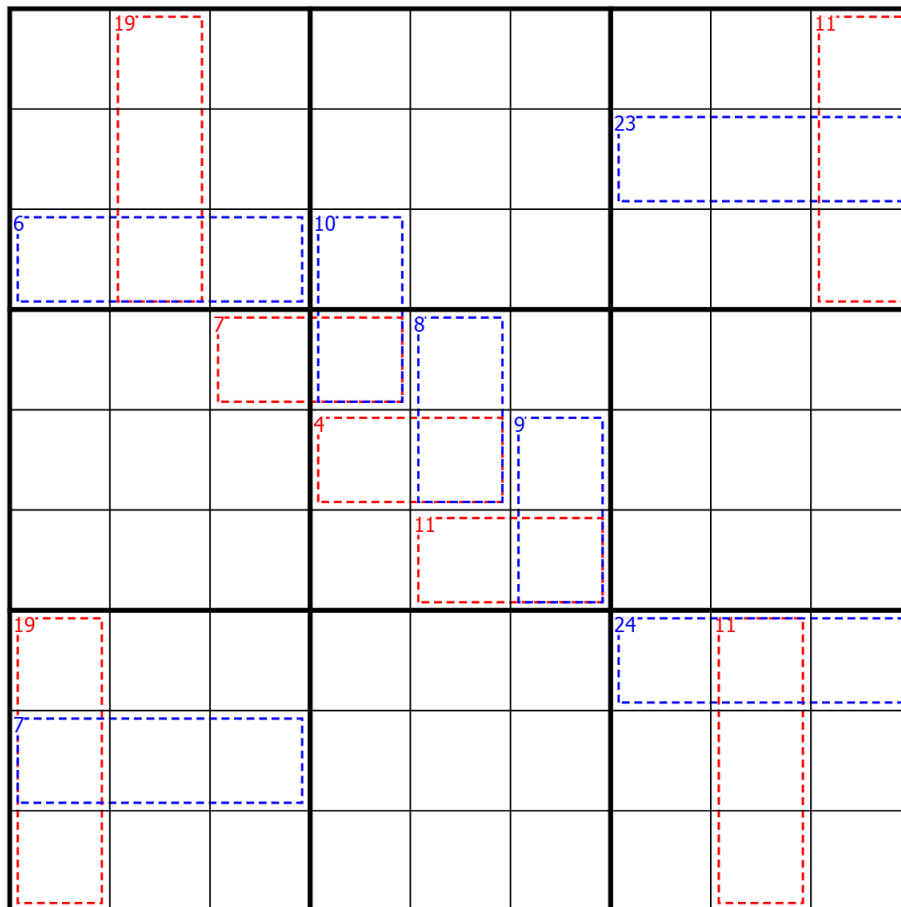
Walkthrough for Median Sudoku: <https://youtu.be/b8fdnA2YHPw>

Purely by coincidence, it's red vs blue here in Australia tonight, that was not how I drew it up, but I'll take it.

Today's GAS is something I've done a couple of times for patreon, but have taken a while to GAS, I call them **Anaglyph Cages!** (Anaglyph being the word for the 3D glasses effect)

Normal Sudoku Rules Apply. Digits in coloured cages must sum to the given total and must not repeat in the cage. Cells overlapped by cages count for both cages.

GAS 101: [see the Hints page near the end of this document]



<https://sudokupad.app/8ncc4a4vyw>

May 4, 2025: Duel Suns

by Philip Newman

Walkthrough of "Anaglyph Cages" by Bill:

<https://youtu.be/3HJ76QhJEHw>

I very nearly failed to realize I would be posting on Star Wars Day! *gasp* I had to make a Star Wars themed puzzle, though, and the title is an especially dumb pun (though not as dumb as this: [# theory-and-programming](#))

Today's **GAS** is a **German Whispers Renban Palindrome Sudoku!**

Normal sudoku rules apply.

German Whispers: Digits in cells directly connected by a green line must differ by at least 5.

Renban: Digits along red lines must form a non-repeating consecutive set, in any order. (For example, a 4-cell renban line could be 4352, but not 5679 or 2312.)

Palindrome: Digits along a grey line must form a palindrome (read the same from either direction).

Note: You can figure this out from the given digits, but the left saber is German Whispers and the right saber is Renban. The hilts are Palindrome.

↓↓↓ (The puzzle is on the next page) ↓↓↓

German Whispers: Digits in cells directly connected by a green line must differ by at least 5.
 Renban: Digits along red lines must form a non-repeating consecutive set, in any order.
 Palindrome: Digits along a grey line must form a palindrome (read the same from either direction).

		6	5					2
	7			4			3	
	8			3			4	
		1	2					5
		8	7				5	9
	9			6			8	4

Green/Red Cosmetics

Play on SudokuPad: <https://sudokupad.app/philip-newman/20250504-duel-suns>

Play on f-puzzles: <https://f-puzzles.com/?id=26n8smcs>

Standard Green/Magenta

Play on SudokuPad: <https://sudokupad.app/philip-newman/20250504-duel-suns-traditional>

Play on f-puzzles: <https://f-puzzles.com/?id=29bftkrq>

May 5, 2025: Sudoku X

by clover!

Walkthrough for Philip's "Duel Suns":

<https://youtu.be/VT2wQuMf8Z8>

It's a very exciting time for GAS, my friends. Today you have an opportunity to earn not one, but *two* bonus hats. (This has nothing to do with my recent trip to Texas, where I did, in fact, see several presumed GAS solvers proudly wearing their bonus hats around town. 🧢🧢)

Today's GAS is a **sudoku X**, aka **diagonal sudoku**! Normal sudoku rules apply. Digits do not repeat along either of the marked diagonals.

🌟 This puzzle has already been solved by a new friend of GAS, in this video: <https://www.youtube.com/watch?v=BPBQEKIxRNQ> If you finish faster than the mystery solver, you can claim a bonus hat! And if you think you know the identity of our mystery solver, guess correctly ||in spoiler tags|| for a second bonus hat. 🌟

	9		1	2		4		
4		2		3		1		9
	3		5	4		1		
2		9		6		7		8
	1		7	8		2		

SudokuPad: <https://sudokupad.app/goj2oy0cvz>

May 6, 2025: HEY! TEACHER!

by Bill Murphy

Walkthrough for Sudoku X: https://youtu.be/y34j_HbfQ-8

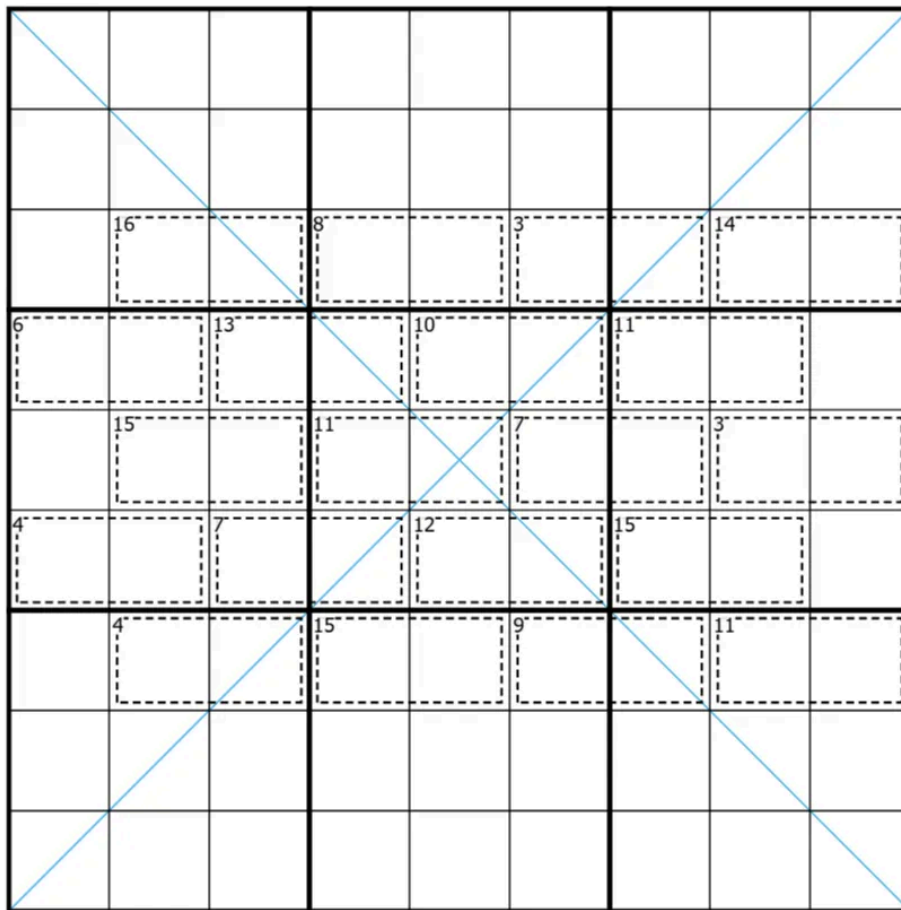
Hey, thanks to [see this spoiled text on the page near the end of this document] for that solve yesterday!

Oh i'm very tired today gang! Towards the end of my 9th hour of teaching today, I let slip a thought which was "Hey, take one look at me! Do you know how much cred you have to have to dress like this?" and the student just took one look at me and shrugged their shoulders and agreed?

Anyway, Today's GAS is inspired by yesterday's GAS. Aesthetics are important kids.

Today's GAS is a **Killer X sudoku!**

Normal Sudoku Rules Apply. Digits in cages must sum to the given total. Digits along the indicated diagonals must not repeat.



<https://sudokupad.app/o729jkourt>

May 7, 2025: Just Kidding

by Philip Newman

Sorry for the double ping! I couldn't find where I had posted the previously linked puzzle, Bill checked as well... but it was already used! I am so careful about not repeating sauropods, and yet here I am repeating puzzles... 🙄

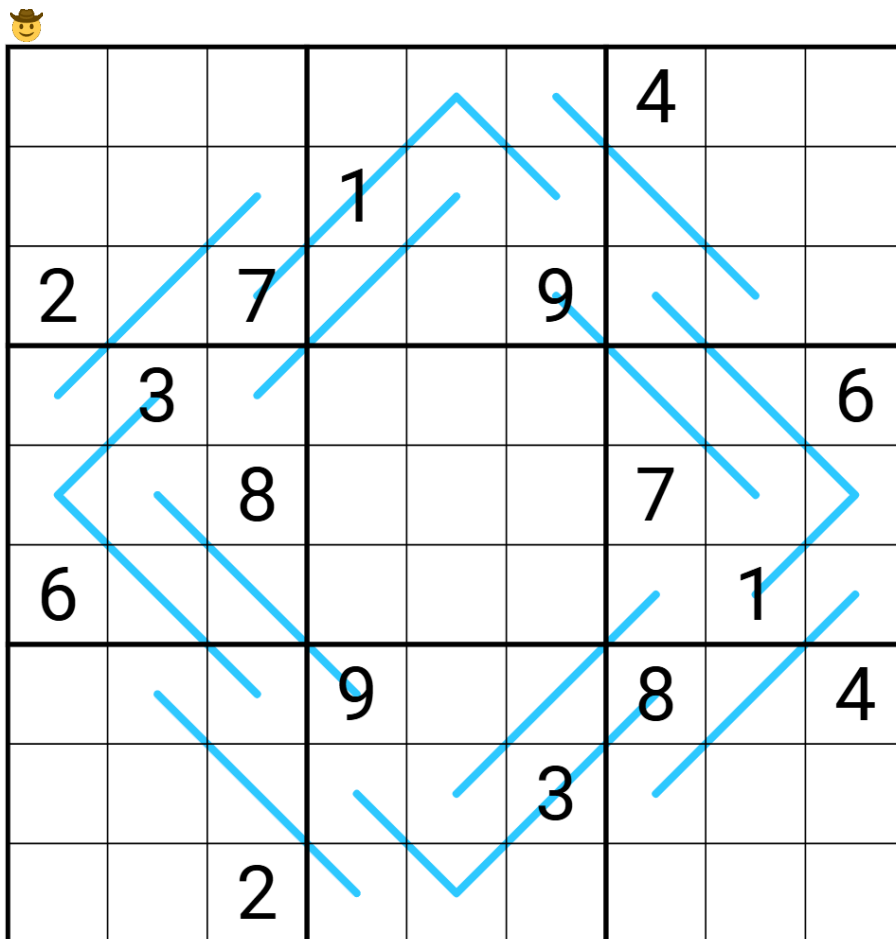
Walkthrough of "HEY! TEACHER!" by Bill:
<https://youtu.be/meNFuCX7r0I>

Today's puzzle is actually an *extremely* nerfed version of a monster I've been working on in [# theory-and-programming](#). The line setup is actually unique on its own, up to rotation (so four solutions). I have been chipping away at it in a spreadsheet of all things. (I mean, just look at this nonsense: [# unknown](#))

Today's **GAS** is a **Region Sum Lines Sudoku!**

Normal sudoku rules apply.

Region Sum Lines: Along each line, the digits in every region it passes through have the same sum. (If multiple disconnected segments of a line pass through a single region, each segment separately sums to the total for the line.)



Play on SudokuPad: <https://sudokuapp.philip-newman.com/20250507-just-kidding>

Play on f-puzzles: <https://f-puzzles.com/?id=2y3zc58g>

May 8, 2025: Average Arrows
by clover!

Walkthrough for Philip's "Just Kidding": https://youtu.be/mJizFyUH_DI

Good morning, friends! Today's GAS is neither good nor bad, neither tall nor short, neither big nor small. It's a perfectly **average arrows** sudoku. Normal sudoku rules apply. The digit in each circle is the average (arithmetic mean) of the digits along the attached arrow.

4		1	→	7	9			6
	⊙2				4		⊙7	
		←	⊙			↑		4
1	←	⊙				⊙		↓
2								3
↑		⊙				⊙	→	1
9		↓			⊙	→		
	⊙8		5				⊙3	
3			9	8	←	6	⊙	7

SudokuPad: <https://sudokupad.app/gv3lgx02ci>

May 9, 2025: The Greater
by Bill Murphy

Look out, I'm playing Magic: The Gathering outside tomorrow!

My knowledge of the modern format has completely dipped in the last two years, but that's ok! I'm just going to have fun, that's why my sideboard started with 4 Chalice of the Void, 2 Boil and 2 Blood Moon 😊

In honour, here is my top 5 choices for pet names for your magic the gathering playing partner (gender neutral too!)
[see the spoiled text on the page near the end of this document]

Today's GAS is a *The Greater* Sudoku! (Name taken from Sudoku Mahabharat, I think we did this in another name some other time maybe)

Normal Sudoku Rules Apply. Digits inbetween cells give the larger of the two digits in those cells.

					9			
		2					3	8
		4						5
		6						
3			5		5	7		
				6				
		6				4		2
			5		2		9	
							7	
	5	3					4	
	4		1					

<https://sudokupad.app/m425nwqjyg>

May 10, 2025: Distractions

by Philip Newman

Walkthrough of "The Greater" by Bill:

<https://youtu.be/yRkm19BB-Jw>

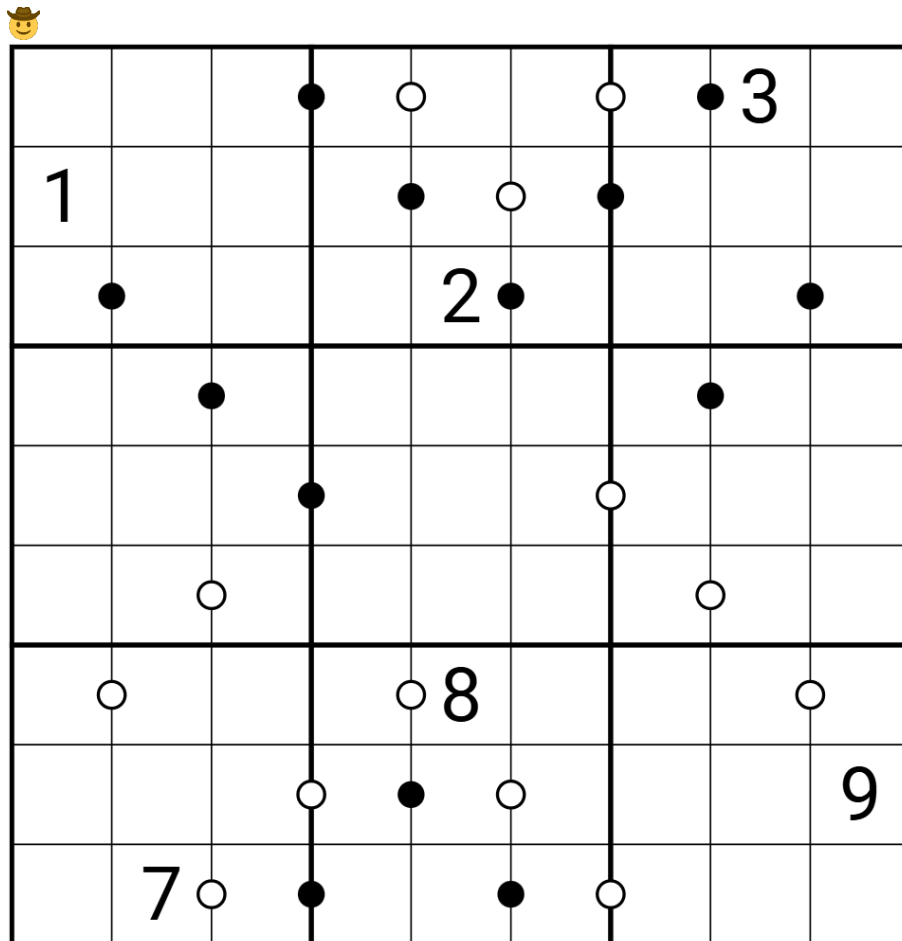
Remember the Diagonal (Sudoku X) puzzles clover and Bill posted? If I had been more on top of things, I would have made one too. But I did make a good number of them after the fact...

This is not one of them, but it did start out that way! I just got distracted and messed around with removing the diagonals... ended up making this gorgeous thing.

Today's **GAS** is a **Kropki Pairs Sudoku**!

Normal sudoku rules apply.

Kropki Pairs: Digits in cells separated by a white dot must be consecutive (have a difference of 1); digits in cells separated by a black dot must have a ratio of 2:1. (No negative constraint - other pairs of adjacent digits may have a difference of 1 or ratio of 2:1.)



Play on SudokuPad: <https://sudokupad.app/philip-newman/20250510-distractions>

Play on f-puzzles: <https://f-puzzles.com/?id=24q2l5fm>

May 11, 2025: Alphabet Soup
by clover!

Update: here's the walkthrough! https://youtu.be/1mIGXTj8_Ok

Walkthrough for yesterday's puzzle will be up later today! I'm currently trying to quit caffeine and you're lucky I pried my eyes open long enough to post this. Send me your strength.

Today's GAS depicts a bowl of store-brand alphabet soup that only contains C, U, and lowercase n (and for some reason, the digits from 1 to 9). Mind you don't spell anything rude with it.

Normal sudoku rules apply. Digits along each thermometer must increase, starting from the round bulb.

		1	7					
		3				9		
	2	4				8	7	6
								4
4								
8	6	9				3	4	
		7				2		
					9	1		

SudokuPad: <https://sudokupad.app/ykkiyj0sis>

May 12, 2025: Crossnumber Sudoku

by Bill Murphy

Walkthrough for Average Arrows and Thermos tomorrow

So listen, great news, I've started a new position at work and stepped up in pay scale and responsibilities! Which is amazing for me, although stepping into management means I have to bench the "First Thought Only Thought" part of my brain for the next six months, but my GAS Backlog has dwindled!

So, you're getting a **spicy** one today! (It's ok, I'll rein it in over the next few)

Today's **GAS** is a **Crossnumber Sudoku**!

Normal Sudoku Rules Apply. Strips of numbers are given to the side of the grid. Place the number sequences into the indicated strips in the grid from either left to right in rows or top to bottom in columns. These strips must read in order they are given. (eg. if a sequence of 1234 was to be placed in a row, that row must read 1234 and not 4321.)

						6				1	4	6	3
										1	3	8	9
										4	2	7	5
										9	2	5	7
										6	1	3	2
7										8	9	3	6
										3	5	1	4
										2	7	9	4
		4											

<https://sudokupad.app/o6h7q024mk>

May 13, 2025: Sudoku XL

by Philip Newman

Walkthrough of "Crossnumber Sudoku" by Bill:

<https://youtu.be/BJgNEwHlvOw>

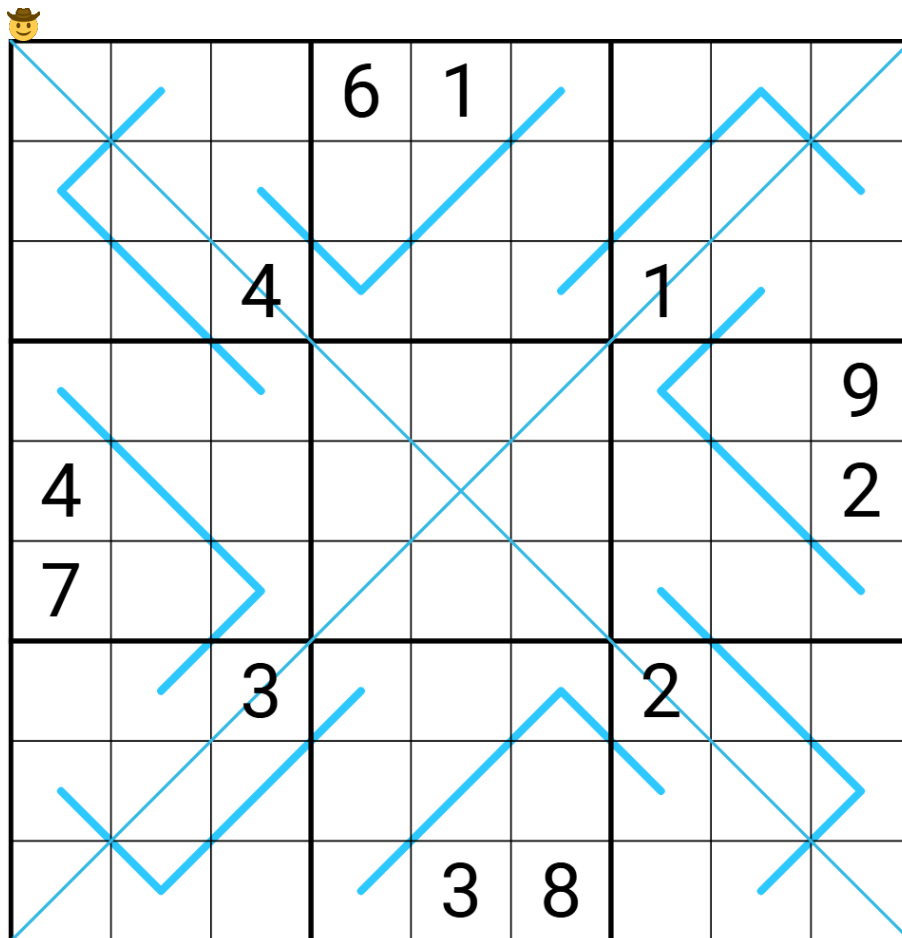
Remember the Diagonal (Sudoku X) puzzles clover and Bill posted? Remember how I said I did make a good number of them after the fact? >_>

Today's **GAS** is a **Diagonal Region Sum Lines Sudoku!**

Normal sudoku rules apply.

Diagonal: Digits along the indicated diagonals cannot repeat.

Region Sum Lines: Along each line, the digits in every region it passes through have the same sum. (If multiple disconnected segments of a line pass through a single region, each segment separately sums to the total for the line.)



Play on SudokuPad: <https://sudokupad.app/philip-newman/20250513-sudoku-xl>

Play on f-puzzles: <https://f-puzzles.com/?id=289d5czu>

May 14, 2025: Even
by clover!

Walkthrough for Philip's "Sudoku XL": <https://youtu.be/wJ7aAE3GHhA>

Today's sudoku is a vengeful little chap. It's not just getting even, it already got **even** (sudoku).

Normal sudoku rules apply. Digits in gray squares are even.

	■	■	2	4				
	■	■	9				■	■
		7			3	1	■	■
		9					7	4
2								6
8	1					5		
■	■	5	7			3		
■	■				9	■	■	
				6	8	■	■	

SudokuPad: <https://sudokupad.app/6zuvvh40ci>

May 15, 2025: Who Put A Nickel In You/Who Put A Nickel In You (Double Sudoku)
by Bill Murphy

Walkthrough for evens tomorrow, i'm tired gang

Quick Followup: 2-2-1 which was strangely good enough to win a pre-constructed commander deck. Thank you to Chalice of the Void on 1, Chalice of the Void on 2. (Also teaching the new generation of Modern players that Boil is legal in the format will never not bring me joy.)

IF YOU GOT A PROBLEM WITH TODAY'S **CLASSIC SUDOKU** TITLES, THEN YOU GOT A PROBLEM WITH ME AND I SUGGEST YOU LET THAT ONE MARINATE

Put the digits 1-9 once each in each box, row and column.

1		6	9	2				
			3		5	2		
2						8	9	
3							1	
4				6				3
	2							7
	8	1						4
		5	4		7			
				5	6	7		8

Who Put A Nickel In You: <https://sudokupad.app/jjs2lmlh6q>

⇓⇓ (The second puzzle is on the next page) ⇓⇓

Put the digits 1-9 once each in each box, row and column.

	1				3		2	
4		5				6		1
	8				6		5	
6		4						
				5				
						3		8
	7		8				6	
3		8				7		2
	4		1				3	

We Don't Fight At Weddings: <https://sudokupad.app/w9joylqtsv>

May 16, 2025: The Negative Zone

by Philip Newman

Walkthrough of "Who Put A Nickel In You" & "We Don't Fight At Weddings" by Bill:

https://youtu.be/4vU_zkQ0uiU

Remember the Diagonal (Sudoku X) puzzles clover and Bill posted? Here's another, now with a negative constraint! 🚫

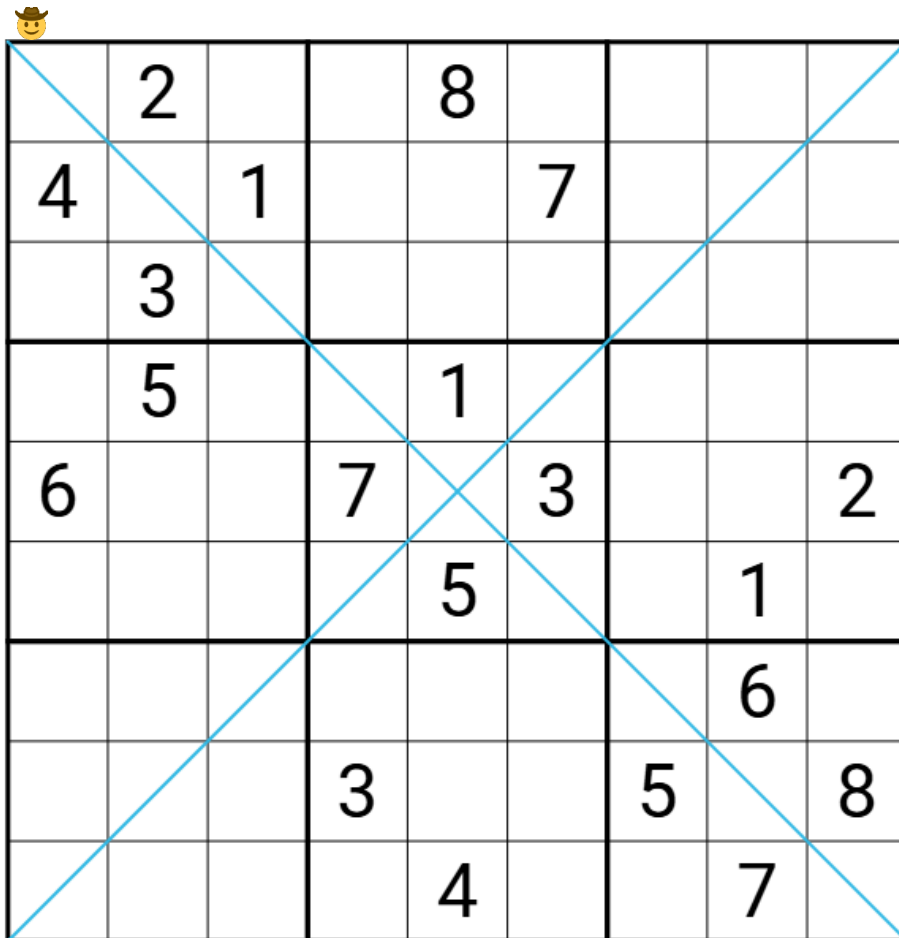
[See the spoiled text on the page near the end of this document]

Today's **GAS** is a **Diagonal Nonconsecutive Sudoku**!

Normal sudoku rules apply.

Diagonal: Digits along the indicated diagonals cannot repeat.

Nonconsecutive: Digits in orthogonally adjacent cells cannot be consecutive (have a difference of 1).



Play on SudokuPad: <https://sudokupad.app/philip-newman/20250516-the-negative-zone>

Play on f-puzzles: <https://f-puzzles.com/?id=ynv6osfy>

May 17, 2025: How Very Odd
by clover!

Walkthrough for Philip's "The Negative Zone": <https://youtu.be/vJbhvrMxcRc>

We had an absolute proliferation of double hats on my last puzzle. An abundance. A plethora. A superfluity. I made you a harder puzzle for today, is what I'm trying to say.

Today's GAS is an **odd sudoku**! Normal sudoku rules apply. Digits in gray circles are odd.

●	●							
●	●				2	●	●	
		1	8	9	7	●	●	
	5	2			●	3		
		4				6		
		9	●			4	7	
	●	●	7	8	5	1		
	●	●	6				●	●
							●	●

SudokuPad: <https://sudokupad.app/b3zujiopvt>

May 18, 2025: Waterboy
by Bill Murphy

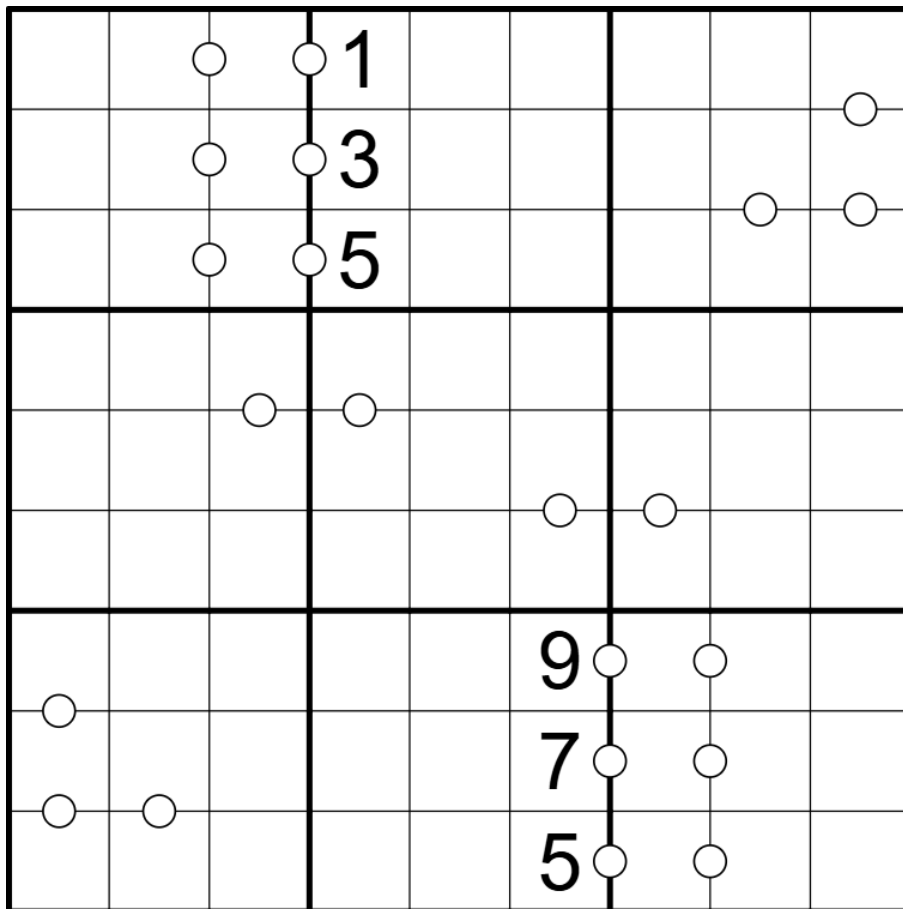
Today's **Consecutive Sudoku** GAS brings my playlist of songs that I've named GAS Puzzles after to 197 songs long and into it's 13th hour!

<https://open.spotify.com/playlist/30FIGK1BD9c8nFpv4HpUq4?si=182f9887262c4b51>

Speaking of things on Spotify to shout out, I've been getting into the Beef and Dairy Network Podcast. Normally I'd give a wink and nudge allusion to it in the intro, but there's nothing I can say which wouldn't sound insane out of context, like, my personal theory that the f^^^h m^^^t is [see the spoiled text on the page near the end of this document].

Before I receive an auspicious knock on my door, puzzle!

Normal Sudoku Rules Apply. Digits separated by a white dot must be consecutive. Not all dots are given.



<https://sudokupad.app/hw9tc6gq1!>

May 19, 2025: Time Keeps On Slippin'

by Philip Newman

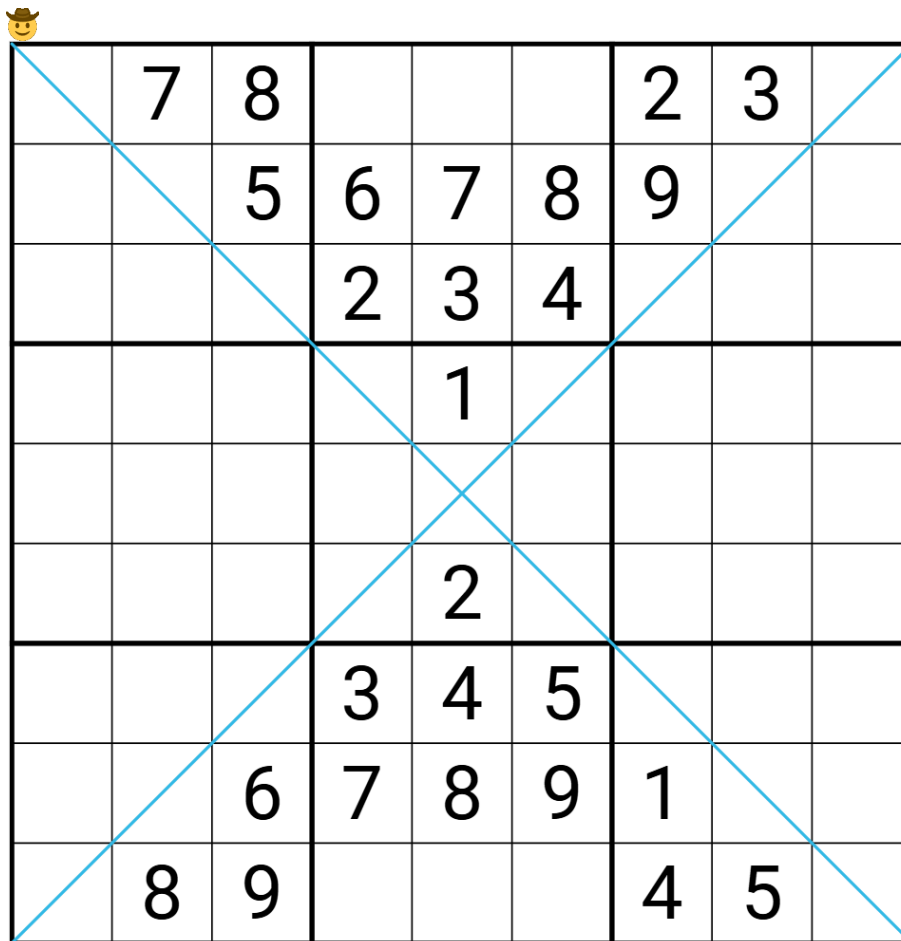
Walkthrough of "Waterboy" by Bill:
<https://youtu.be/mm-jb45e9Tw>

Another diagonal?? We're gonna have to make a run to the diagonal store to resupply our warehouse. (What diagonal store? Think IKEA but the exit is uphill and even more confusing to get to.)

Today's **GAS** is a **Diagonal Sudoku!**

Normal sudoku rules apply.

Diagonal: Digits along the indicated diagonals cannot repeat.



Play on SudokuPad: <https://sudokupad.app/philip-newman/20250519-time-keeps-on-slippin>

Play on f-puzzles: <https://f-puzzles.com/?id=ym36yzjr>

May 20, 2025: HI!
by clover!

Walkthrough for Philip's "Time Keeps On Slippin'": <https://youtu.be/ZixF2eBoTRU>

HI! Hope you're all doing well this morning, I'm so happy to see you and so is this puzzle!

In this **consecutive clones sudoku**, normal sudoku rules apply. Within matching pairs of shapes, digits in the same relative position must have a difference of exactly 1. For instance, the center cells of the two H shapes must differ by 1.

1		3		5		7		
							1	
							9	
9								
		5				3		
								1
	9							
	7							
		1		3		5		7

SudokuPad: <https://sudokupad.app/m708qkpuf6>

May 21, 2025: Pointing Digits Sudoku

by Bill Murphy

Walkthrough for HII: <https://youtu.be/dKXk75hKkog>

OK SO LISTEN

I said I was gonna rein it in a little over a week ago

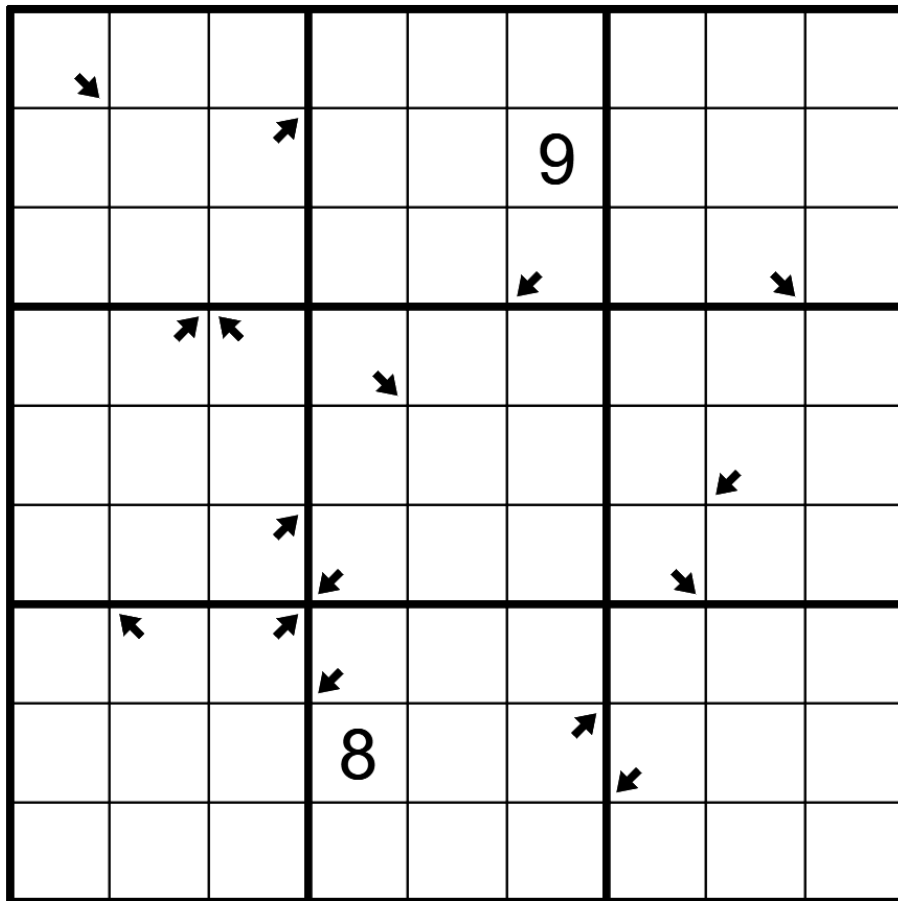
I've absolutely not done that.

(But in an act of kindness, I need y'all to know a pure Little Killer with the title "Degrees of Freedom" is going back into the oven instead of being posted tonight.)

Today's GAS is a **Pointing Digits** Sudoku!

Normal Sudoku Rules Apply. A digit N in a cell with an arrow indicates that the digit N is also in a cell N steps in the direction of an arrow. There may be other repeated digits in the direction of the arrow. Not all arrows are given. (eg. A 4 in a cell with an arrow means that there is a 4, 4 cells away in the direction of the arrow and there may be additional 4s in that direction.)

GAS 101: [see the Hints page near the end of this document for the spoiled text]



<https://sudokupad.app/mcwgayey3>

May 22, 2025: Crossing the Themes

by Philip Newman

Walkthrough of "Pointing Digits Sudoku" by Bill:

<https://youtu.be/HFsBHAArwxw>

A fun bonus before we get to the GAS! GMPuzzles has recently restarted daily posts on their blog and to kick that off they are posting the puzzles from a SudokuCon 2025 contest organized by @clover? and Thomas Snyder (most of the puzzles from them, with a few contributions by me and @Gliperal). The contest puzzles are "Just One Cell", where the puzzle is to deduce the single cell in which a digit is fixed across all (multiple) solutions of the sudoku. Shoutout to our champion @Cane_Puzzles (Can)!

You can read more about the puzzle type here:

<https://www.gmpuzzles.com/blog/2025/05/a-brief-history-of-just-one-cell-sudoku-before-the-fun-begins/>

And all the puzzles posted so far are collected here (including clover's and my debut puzzles on GMPuzzles; you might notice a theme in the puzzles I contributed...):

<https://www.gmpuzzles.com/blog/tag/justonecellsudoku/>

On to the main event: It's the last of the diagonal series... and the start of something else? >_>

Today's **GAS** is a **Diagonal 159 Sudoku!** If you aren't familiar with 159/Column Indexer rules and want to hear clover explain it more clearly, you can check out the walkthrough for the last 159 puzzle we did: https://youtu.be/M_MtVV0Kpqq

Normal sudoku rules apply.

Diagonal: Digits along the indicated diagonals cannot repeat.

Column Indexer: The cells marked in red are column indexers; if a digit D in a red cell is in column C in its row, then digit C is in column D in the same row.

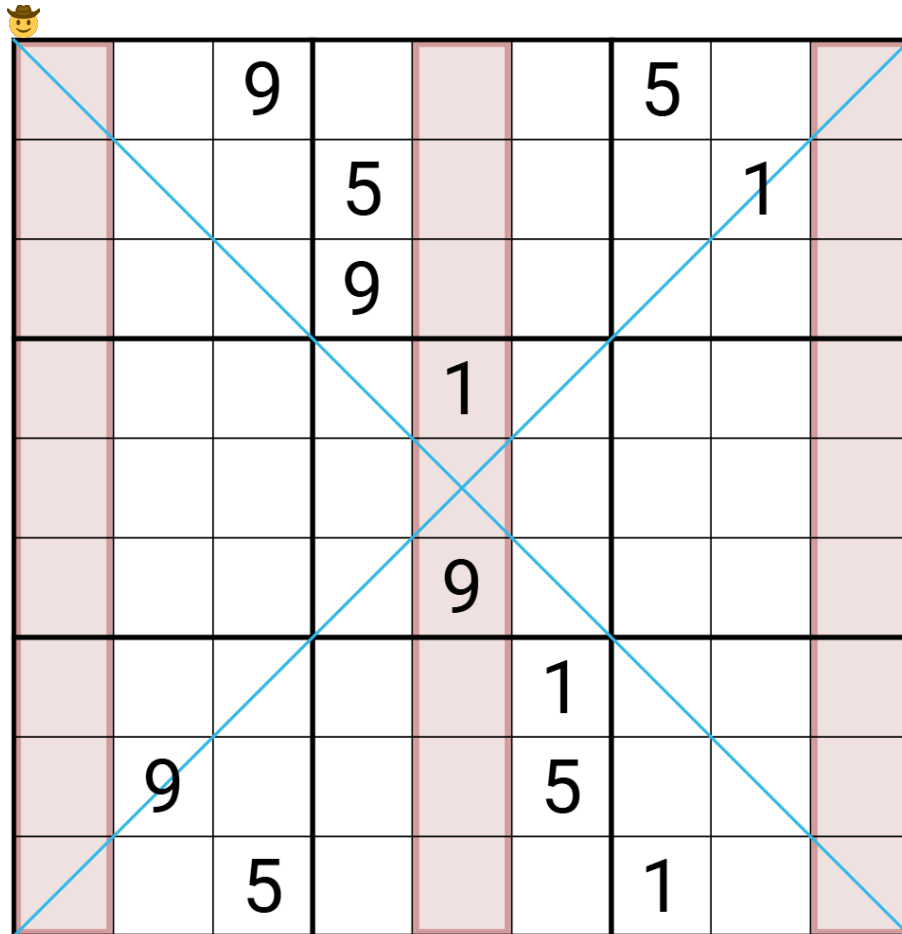
Cells in columns 1, 5, and 9 are column indexers.

↓↓↓ (The puzzle is on the next page) ↓↓↓

Normal sudoku rules apply.

Diagonal: Digits along the indicated diagonals cannot repeat.

Column Indexer: The cells marked in red are column indexers; if a digit D in a red cell is in column C in its row, then digit C is in column D in the same row.



Play on SudokuPad: <https://sudokupad.app/philip-newman/20250522-crossing-the-themes>

Play on f-puzzles: <https://f-puzzles.com/?id=yltr9ofj>

May 23, 2025: Math Class
by clover!

Walkthrough for Philip's "Crossing the Themes": <https://youtu.be/j2iD7zJUdd8>

I've signed you up for 8:30 AM math class. Your young pliable brains work best first thing in the morning, right? Let's start with a nice pop quiz, in the form of this **German whispers sudoku**:

Normal sudoku rules apply. Along each green line, adjacent digits differ by 5 or more.

5						9		
9								
			6			2		
	2			1				
				1			8	
	7			8				
								2
		4						6

SudokuPad: <https://sudokupad.app/1r3b1r8b2e>

May 24, 2025: Stepping on a Rake
by Bill Murphy

Walkthrough for Math Class: <https://youtu.be/Ameb7f5tRtM>

I'm sure you remember which room Math Class was in, right? This isn't like one of your nightmares, this is real life!

Today's GAS is a **Numbered Rooms** Sudoku!

Normal Sudoku Rules Apply. Clues outside the grid give the digit which appears in the Xth cell from that clue, where X is the digit in the cell adjacent to the clue.

		2		4		6		7	
	1		8		2		4		6
8									1
	2								8
8									8
	4								2
9									9
	6								4
5									4
	8		4		6		2		9
		2		7		1		3	

<https://sudokupad.app/j1o344bs2e>

May 25, 2025: I V IX
by Philip Newman

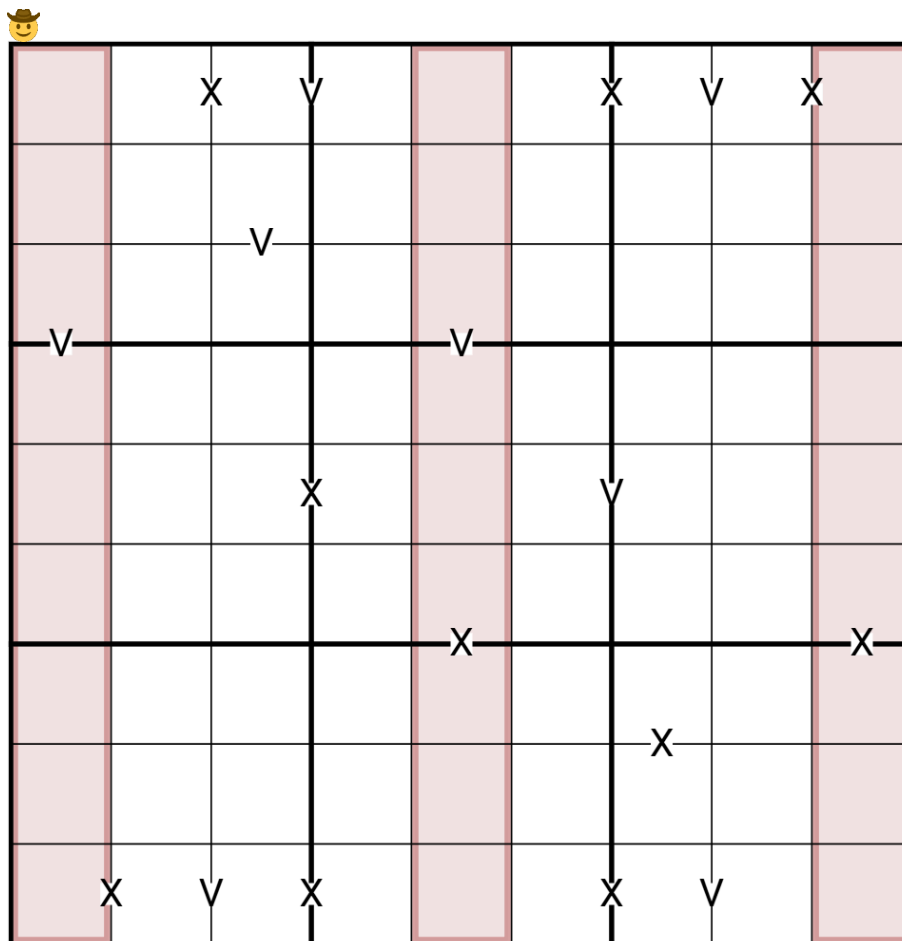
Walkthrough of "Stepping on a Rake" by Bill:
<https://youtu.be/ZO1Xmz3GnEI>

Today's **GAS** is a **159 XV Pairs Sudoku**! That's right, more indexing! (If this happens to be the first GAS you've ever tried and you've never done 159 Sudoku before, a. Welcome! b. Check out clover's walkthrough of my previous puzzle: <https://youtu.be/j2iD7zJUdd8>)

Normal sudoku rules apply.

Column Indexer: The cells marked in red are column indexers; if a digit **D** in a red cell is in column **C** in its row, then digit **C** is in column **D** in the same row.

XV Pairs: Digits in cells separated by a **'V'** must sum to 5; digits in cells separated by an **'X'** must sum to 10. (No negative constraint - other pairs of adjacent digits may sum to 5 or 10.) Cells in columns 1, 5, and 9 are column indexers.



Play on SudokuPad: <https://sudokupad.app/philip-newman/20250525-i-v-ix>
Play on f-puzzles: <https://f-puzzles.com/?id=23n2pj25>

May 26, 2025: Seven Ate Nine
by clover!

Walkthrough for Philip's "I V IX":
<https://youtu.be/fS39G41F4hw>

Hey. Hey solvers. So we all know that 6 was scared of 7 because 7 ate 9. But *why* did 7 eat 9 in the first place?

[see the spoiled text on the page near the end of this document]

Today's GAS is a **diagonal sum to 9 sudoku** (no negative)! Normal sudoku rules apply. Along each gray line, every adjoining pair of digits sums to 9.

		1		2		3		9
9		4		3		2		

SudokuPad: <https://sudokupad.app/qgfnwnm9f1>

May 27, 2025: Square Dance

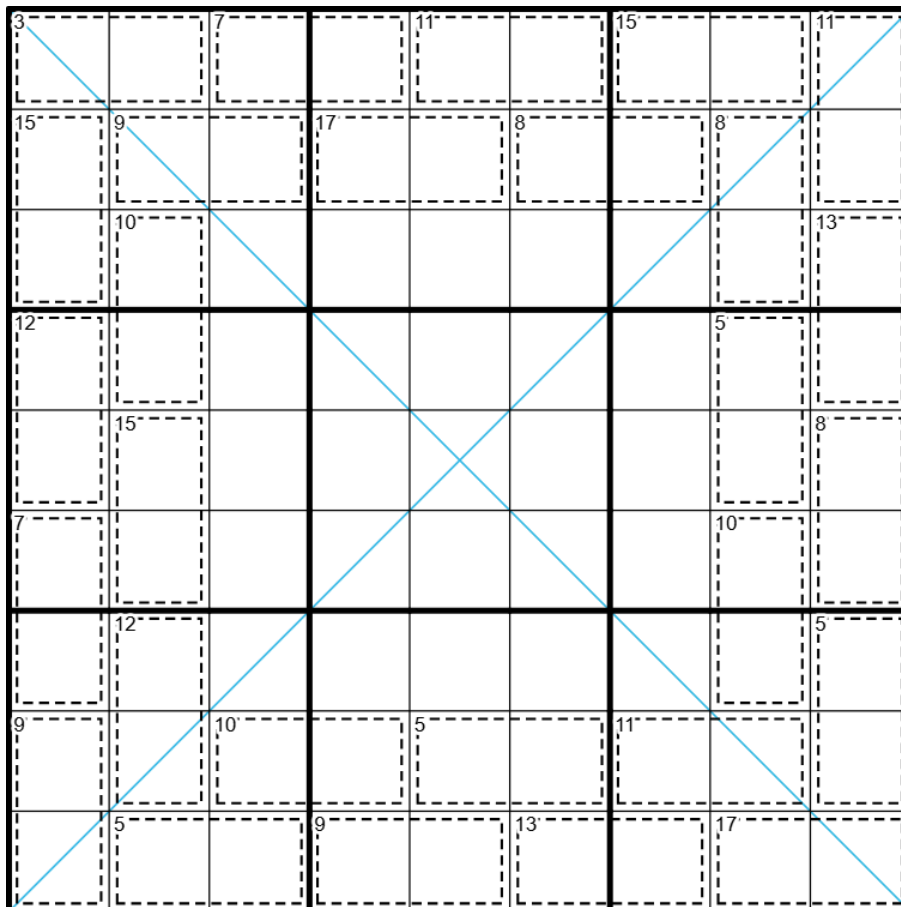
by Bill Murphy

I'm calling in sick to work tomorrow, so walkthrough tomorrow! (guys will just be called will and then they won't)

Deeply silly request, with a bit of a heart to it. I'm getting a custom jacket made. It's gonna be cut and sew so it's mishmash of colours and patterns, which is absolutely my vibe. But also, what a way to truly embrace the cut and sew aesthetic then to ask people what they like, **post a fabric sample of either a nice colour you like or pretty pattern you might see on clothing** when you post your hat time for today's **Killer Diagonal** Sudoku and I'll swap you a **bonus hat for it**.

(I know I did a killer diagonal recently, but I'm just exploring making different pretty grids right now)

Normal Sudoku Rules Apply. Digits in cages must sum to the given total. Digits along the indicated diagonals must not repeat.



<https://sudokupad.app/m3atdq2frn>

May 28, 2025: Punch Card/Punched

by Philip Newman

Walkthrough of "Square Dance" by Bill:

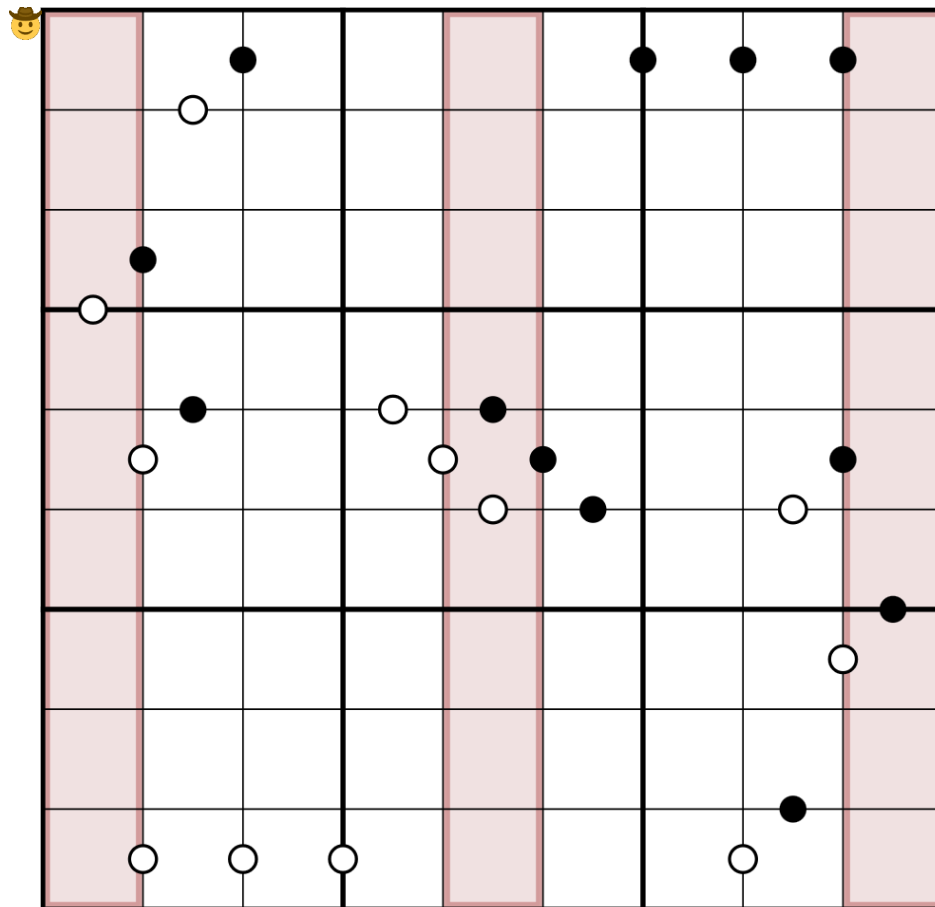
<https://youtu.be/zzzAwTE4nM8>

Today's **GAS** is a **159 Kropki Pairs Sudoku**! This one turned out a wee bit sticky, so there are two versions to choose from; Punched is the non-spoiled image, Punch Card has a few extra clues. [Note from typesetter: I included the spoiled one on the following page, even though „Punch Card“ was linked first in the original post]

Normal sudoku rules apply.

Column Indexer: The cells marked in red are column indexers; if a digit **D** in a red cell is in column **C** in its row, then digit **C** is in column **D** in the same row.

Kropki Pairs: Digits in cells separated by a white dot must be consecutive (have a difference of 1); digits in cells separated by a black dot must have a ratio of 2:1. (No negative constraint - other pairs of adjacent digits may have a difference of 1 or ratio of 2:1.) Cells in columns 1, 5, and 9 are column indexers.



Punched

Play on SudokuPad: <https://sudokuapp.philip-newman/20250528-punched>

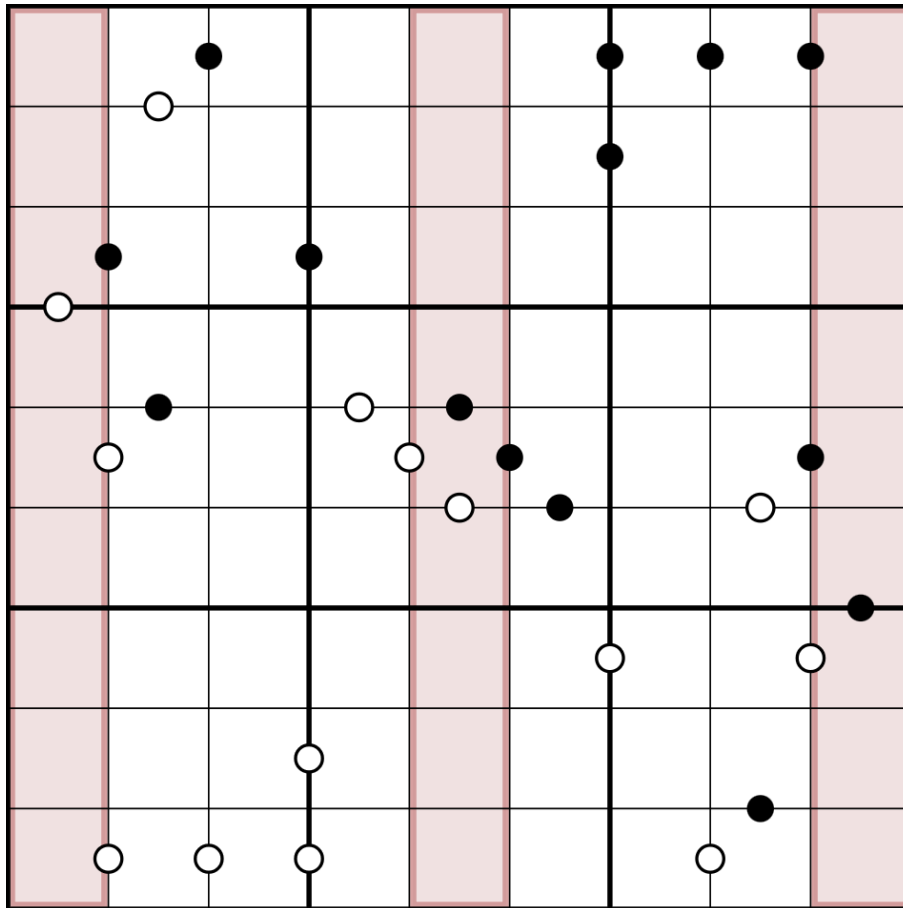
Play on f-puzzles: <https://f-puzzles.com/?id=2bbafdvk>

⇓⇓ (The originally spoiled version is on the next page) ⇓⇓

Normal sudoku rules apply.

Column Indexer: The cells marked in red are column indexers; if a digit D in a red cell is in column C in its row, then digit C is in column D in the same row.

Kropki Pairs: Digits in cells separated by a white dot must be consecutive (have a difference of 1); digits in cells separated by a black dot must have a ratio of 2:1. (No negative constraint - other pairs of adjacent digits may have a difference of 1 or ratio of 2:1.) Cells in columns 1, 5, and 9 are column indexers.



Punch Card

Play on SudokuPad: <https://sudokupad.app/philip-newman/20250528-punch-card>

Play on f-puzzles: <https://f-puzzles.com/?id=2423d5aa>

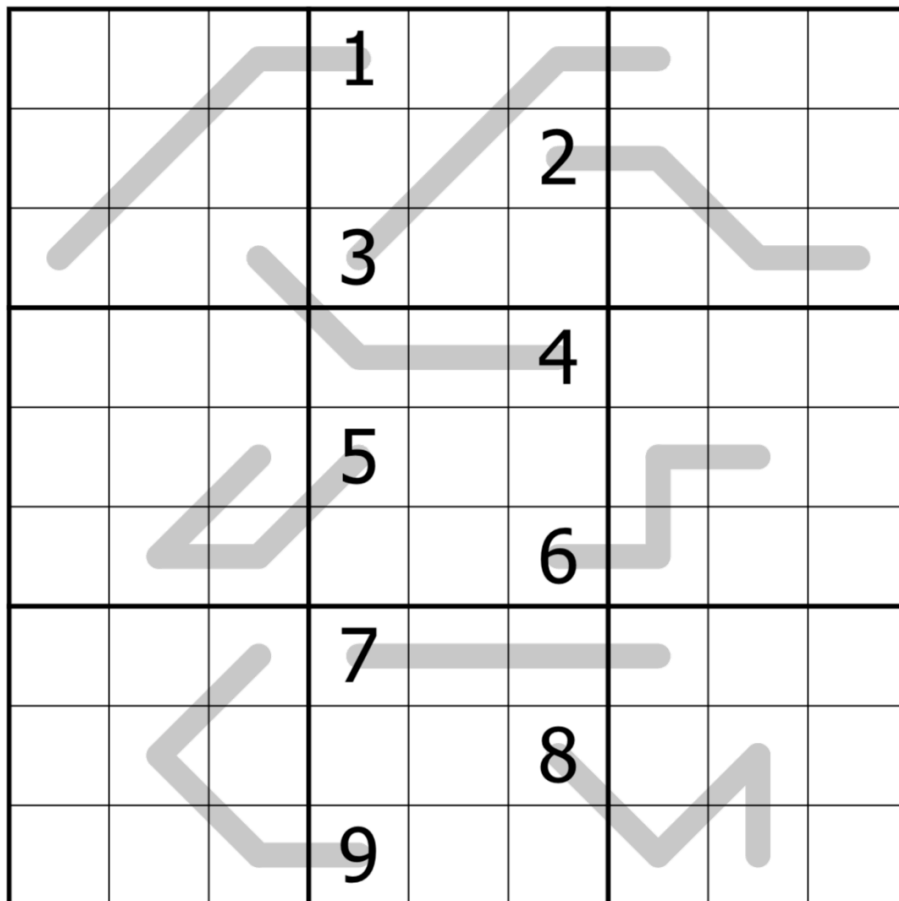
May 29, 2025: Countup

by clover!

Walkthrough: <https://youtu.be/yfTUQEDyBtg>

Why *do* we drive on a parkway and park on a driveway? And we're all familiar with a countdown, but have you ever tried doing a countup instead?

Today's GAS is a **sequence sudoku**. Normal sudoku rules apply. Each gray line contains an arithmetic sequence of digits, in either increasing or decreasing order. (In an arithmetic sequence, every pair of adjacent digits has the same difference, such as 3 5 7 9 or 7 4 1.)



SudokuPad: <https://sudokupad.app/12io305up4>

May 30, 2025: Min-Max Sudoku

by Bill Murphy

Damn, it really is all about the highs and the lows sometimes. Even if it's been a pretty average week, winding up watching taskmaster repeats and being comfy is sometimes all ya need really. (I'm currently doing a doctor enforced "no liquids except water, no dairy, no spicy foods, no fresh fruits and no raw vegetables" and i'm gonna be real i'd rather just live with the reflux)

In that spirit, today's GAS is a **Min-Max Sudoku**!

Normal Sudoku Rules Apply. Clues outside the grid give the sum of the largest and smallest of the first three cells seen from the direction of the clue. (eg. If the first three cells seen contained 1 8 9, then the clue would be $1+9 = 10$)

	4		13			12	11		10	
8								8		15
	2		8				4		5	
12		5								8
5										
				3						
										13
9		3								15
	8		5				2		4	
13								5		6
	16		8	6			9		9	

<https://sudokupad.app/xhgd8xfqo3>

May 31, 2025: To Whom It May Concern
by Philip Newman

Walkthrough of "Min-Max Sudoku" by Bill:
<https://youtu.be/kYxcSLt9nBs>

Today's delay brought to you not by executive dysfunction, not by medical appointments, not by work nonsense... but by getting the kids out the door for a weekend with my parents. 🎉

Today's **GAS** is a **159 Quadruples Sudoku!** I actually just set this last night; I had planned for another and let's just say Bill wasn't enthusiastic. 😊 Might be in a GAS Leak eventually.

This one is a bit quirky! Don't worry if it takes a bit to get going on it. There's a "secret" property of column indexers that will be quite helpful here, so if you aren't familiar with that I recommend checking out @Lucian's solve of my previous puzzle (timestamp at 4:48):
<https://www.youtube.com/watch?v=YPPq2h633Xg&t=288s>

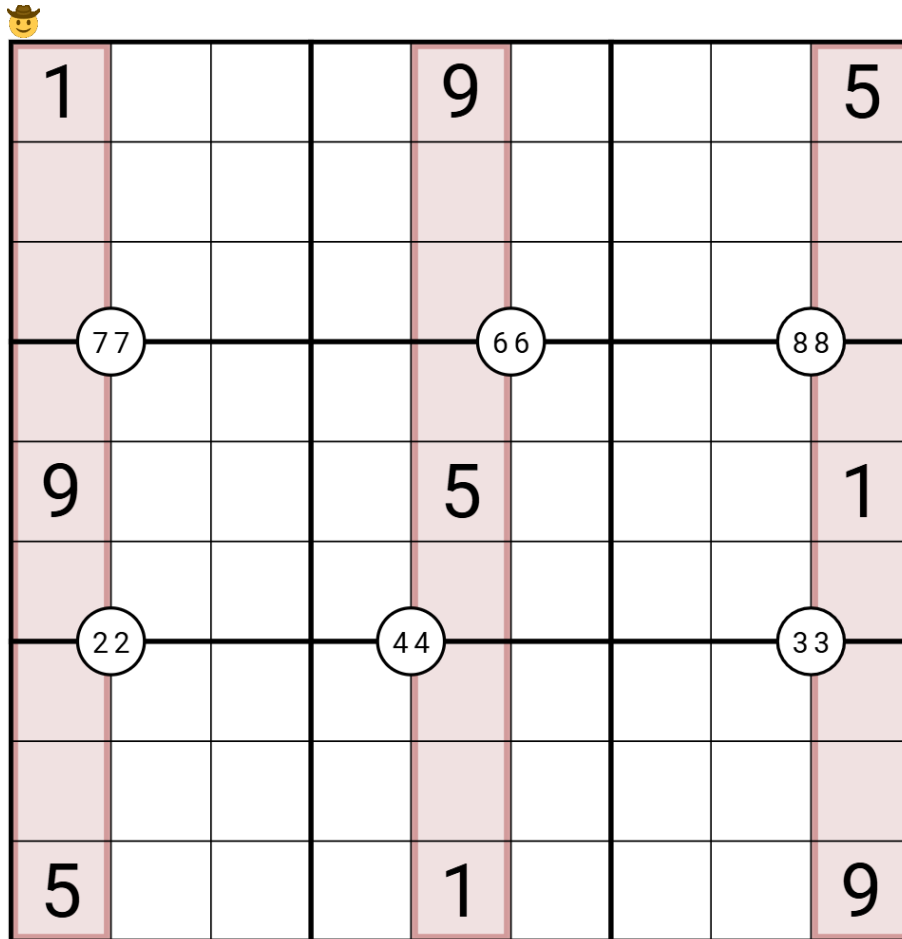
↓↓ ↓↓ (The puzzle is on the next page) ↓↓ ↓↓

Normal sudoku rules apply.

Column Indexer: The cells marked in red are column indexers; if a digit D in a red cell is in column C in its row, then digit C is in column D in the same row.

Quadruples: Digits in corner circles must appear in the surrounding four cells, in some order.

Cells in columns 1, 5, and 9 are column indexers.



Play on SudokuPad: <https://sudokupad.app/philip-newman/20250531-to-whom-it-may-concern>

Play on f-puzzles: <https://f-puzzles.com/?id=26fdqn4o>

Bonus 1: Treasure Hunt Sudoku

by clover!

Normal sudoku rules apply.

Treasure Hunt: Digits in circles indicate the number of treasures in the cells directly around it (diagonal too). A treasure is a digit that is higher than the digit in the circle.

	○		⑤		②		○	
○				9				○
			⑥		④			
2		6		7		3		5
	8						1	
⑤		3				7		②
	7						2	
○								○
9		○				○		6

SudokuPad: <https://sudokupad.app/p5yq297wnf>

Bonus 2: Think Less

by Bill Murphy

Normal Sudoku rules apply. Each number in the grid represents a building of that height, and clues outside the grid indicate how many buildings are visible from that point when looking along the corresponding row or column. A building is visible when there are no taller buildings before it.

					3				7
			2						3
2						4			
				9					
		1						5	
2					5				
7			6						
									3
									7

SudokuPad: <https://sudokupad.app/pso6ehh1a3>

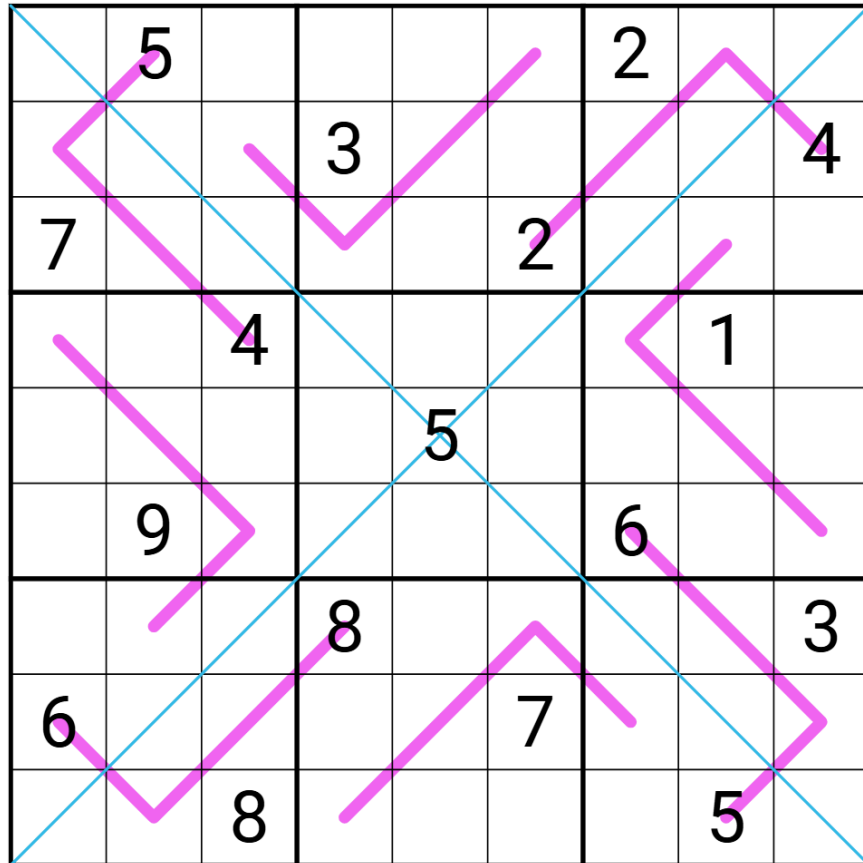
Bonus 3: Diagonal Renban

by Philip Newman

Normal sudoku rules apply.

Diagonal: Digits along the indicated diagonals cannot repeat.

Renban: Digits along lines must form a non-repeating consecutive set, in any order. (For example, a 4-cell renban line could be 4352, but not 5679 or 2312.)



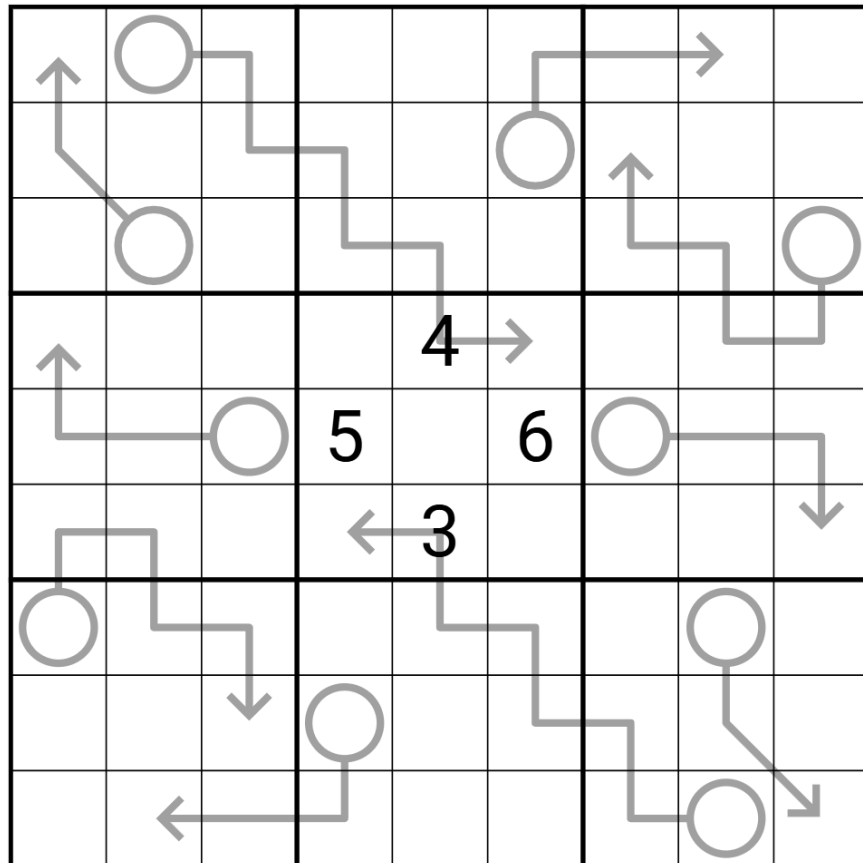
SudokuPad: <https://sudokupad.app/ml7izdbcjp>

Bonus 4: 0-8 Arrow Sudoku

by clover!

0-8 sudoku rules apply: Place a digit from 0-8 in each empty cell in the grid such that each row, column and 3x3 box contains each digit exactly once.

Arrow: The digits along each arrow sum to the digit in the attached circle.



SudokuPad: <https://sudokupad.app/qv6ifpheus>

Bonus 5: Trinidad

by Bill Murphy

Normal sudoku rules apply. Clues outside the grid give the sum of the first X cells seen from the direction of the clue, where X is the first digit seen from the direction of the clue.

					8					
		4								
				7						
						2				
			5							

Clues: (6) (9) (41) (7) (11) (32) (27) (12) (8) (38) (13) (3)

SudokuPad: <https://sudokupad.app/vkb39vmqgu>

Time Benchmarks

			
	Two party hats	One party hat	Today's dinosaur:
May 1, 2025	9:00	20:00	Death-Defying Damalasauros
May 2, 2025	6:00	11:00	mid-sized Mochlodon
May 3, 2025	8:30	17:00	Accidentally Pressed Enter Too Early Edmarka
May 4, 2025	8:54	17:54	Fourthful Francoposeidon
May 5, 2025	7:00	13:00	grand Guanlong
May 6, 2025	8:00	16:00	Clashing Coahuilaceratops
May 7, 2025	6:00	13:00	Homesick Hisanohamasaurus
May 8, 2025	7:30	14:00	mean Manidens
May 9, 2025	8:00	15:00	Conspicuous Sonorasaurus
May 10, 2025	8:00	15:00	Off-Diagonal Otogosaurus
May 11, 2025	6:00	11:00	eepy Euoplocephalus
May 12, 2025	9:00	19:00	Managerial Miragaia
May 13, 2025	8:00	16:00	Anticipated Angloposeidon
May 14, 2025	6:00	11:00	rampaging Rhinore
May 15, 2025 ¹	10:30	20:00	Letterkenny Laquintasaura
May 16, 2025	6:00	13:00	X-tinct Xinghesaurus
May 17, 2025	7:30	14:00	bountiful Bellusaurus
May 18, 2025	8:30	15:00	Mitchell's Miragaia
May 19, 2025	6:30	13:00	Biased Biconcavoposeidon
May 20, 2025	6:00	11:00	hospitable Huxleysaurus
May 21, 2025	9:00	17:00	Sensible Seitaad
May 22, 2025	7:30	15:00	Serial Somphospondylid
May 23, 2025	6:30 ²	12:00 ³	A+ Abydosaurus
May 24, 2025	7:30	13:00	Memorable Mojoceratops
May 25, 2025	8:00	16:00	Indexed Ikqaumishan
May 26, 2025	6:30	12:00	Jeyawati jokester
May 27, 2025	7:00	13:00	Crowdsourced Cryptovolans
May 28, 2025 ⁴	7:30	15:00	Imaginary Imrankhanhero
May 29, 2025	8:00	15:00	parallel-parked Parasaurolophus
May 30, 2025	8:00	15:00	Acidic Antarctosaurus
May 31, 2025	8:00	20:00	Genuinely Symmetric Poripuchia GSPsaurus ⁵

¹ The times given are for the pair. For a **bonus hat**, finish BOTH in 6:48 or less with no pencilmarks (honour system)

² for two party hats and an A+

³ for one party hat and an A+

⁴ The times given are for either puzzle

⁵ I know, right? I didn't make this one up, though it's still considered a dubious genus. The GSP here stands for Geological Survey of Pakistan.)

Hints and other spoiled texts

Hint for May 1, 2025

GAS 101: Consider the four cages which include arrow circles. Each of these cages also includes a cell on the corresponding longer arrow coming from the circle. What you should think about is: what is the lowest digit you can put in each circle? You can actually resolve three of them immediately!

Hints for May 3, 2025:

GAS 101: You can find a very good introduction to the start of this puzzle here: [#daily-sudoku-puzzles](#)

Spoiler for May 6, 2025:

Hey, thanks to Thomas Snyder for that solve yesterday!

Spoiler for May 9, 2025:

In honour, here is my top 5 choices for pet names for your magic the gathering playing partner (gender neutral too!)

Angel Of Serenity
Purple Worm
Goblin Trashmaster
Defiler of Flesh
Fat Ass

Spoiler for May 16, 2025:

Congrats to everyone who spotted that my last puzzle is unique without the diagonal constraint. >_> This one is not.

Spoiler for May 18, 2025:

Speaking of things on Spotify to shout out, I've been getting into the Beef and Dairy Network Podcast. Normally I'd give a wink and nudge allusion to it in the intro, but there's nothing I can say which wouldn't sound insane out of context, like, my personal theory that the f^{^^}h m^{^^}t is man.

Hint for May 21, 2021:

GAS 101: The nature of this constraint restricts either very high digits or very low digits. Start by hunting the 1s and work your way up.

Spoiler for May 26, 2025:

Because you're supposed to eat three square meals a day.