

# GAS Leak

Genuinely Approachable Sudoku  
from the CtC Discord

Volume 51:

April 1 – April 30, 2025

Welcome to April!

We got a full month of GAS puzzles for you, one better than the other.

We start – as always this time of the year – with several April Fools' puzzles. Please take them in the spirit they were written and published – and pretend it's April 1st when you solve them :-)  
Oh, and some might not necessarily be totally SFW.

Directly after there was Sudokucon and a bit of aftermath in the form of reminiscences by the content of the puzzles. We also had wiggly puzzles, thermos, arrows, XV, a gattai, a fog one, a choose-your-variant one and much, much more. And bonus hats.

Have fun solving!

**April 1, 2025: Big/Small/Odd/Even/Prime/Nonprime/Integer Sudoku**  
by clover!

Good morning, friends! Today's GAS is a Bill Murphy invention: a riff on Big/Small/Odd/Even sudoku that we're calling Big/Small/Odd/Even/Prime/Nonprime/Integer sudoku. Try not to hold your breath while you read these rules; you might turn blue and die.

Normal 8x8 sudoku rules apply. Clues outside of the grid apply to the first two digits from that direction in that row or column.

- big: 5, 6, 7, or 8
- small: 1, 2, 3, or 4
- odd: 1, 3, 5, or 7
- even: 2, 4, 6, or 8
- prime: 2, 3, 5, or 7
- nonprime: 1, 4, 6, or 8
- integer: 1, 2, 3, 4, 5, 6, 7, or 8

Note: due to typesetting issues, clues in the SudokuPad link have been abbreviated.

non-  
prime even prime integer small

								prime
	2	6						even
								non- prime
big	6					5		integer
odd	5					2		small
odd								
big					1	8		
small								

big odd odd big small

SudokuPad: <https://sudokupad.app/9f1izfy5tg>

## April 1, 2025: The Doldrums

by Bill Murphy

Walkthrough for The Raven: <https://youtu.be/BXmQGnRQAJg>

Subject: Moving Forward Together

Dear @Daily Sudoku Solver,

I hope this email finds you well and thriving. As we continue to navigate through these challenging yet exciting times, I wanted to take a moment to touch base and ensure we're all on the same page moving forward.

Our team has been working tirelessly, and I know that together, we can achieve great things. As we put our heads down and focus on the road ahead, let's remember to stay positive and keep our eyes on the prize. The sky's the limit, and the best is yet to come!

I am confident that with our combined effort and dedication, we will continue to rise to the occasion and reach new heights. It's all about working smart, not hard, and keeping the momentum going. We truly are stronger together, and I'm excited about the potential for all of us to succeed.

Please find attached today's **GAS**, a **Penrose Sudoku** in which you must *place the digits 1-7 in each outlined region such that there is no repeats in each region or "circular row"*. My sincerest apologies that **it does not come with any solving software**, but I do believe that whether you are a sudokupad fan or a penpa fan, we can all agree that the worst way to solve a sudoku would have to be Adobe Acrobat.

Regarding hat times, ■ or less will be sufficient for two hats, while ■ or less will be enough for one hat. If you do not reach these benchmarks, please feel free to reach out if you have any questions, concerns, ideas or for a Professional Paluxysaurus 🦖. My door is always open, and I'm here to support you every step of the way.

Let's keep pushing the envelope and never lose sight of the bigger picture. Thank you for your continued commitment, and let's make the most of this amazing opportunity.

Wishing you all the best as we take this next step forward together!

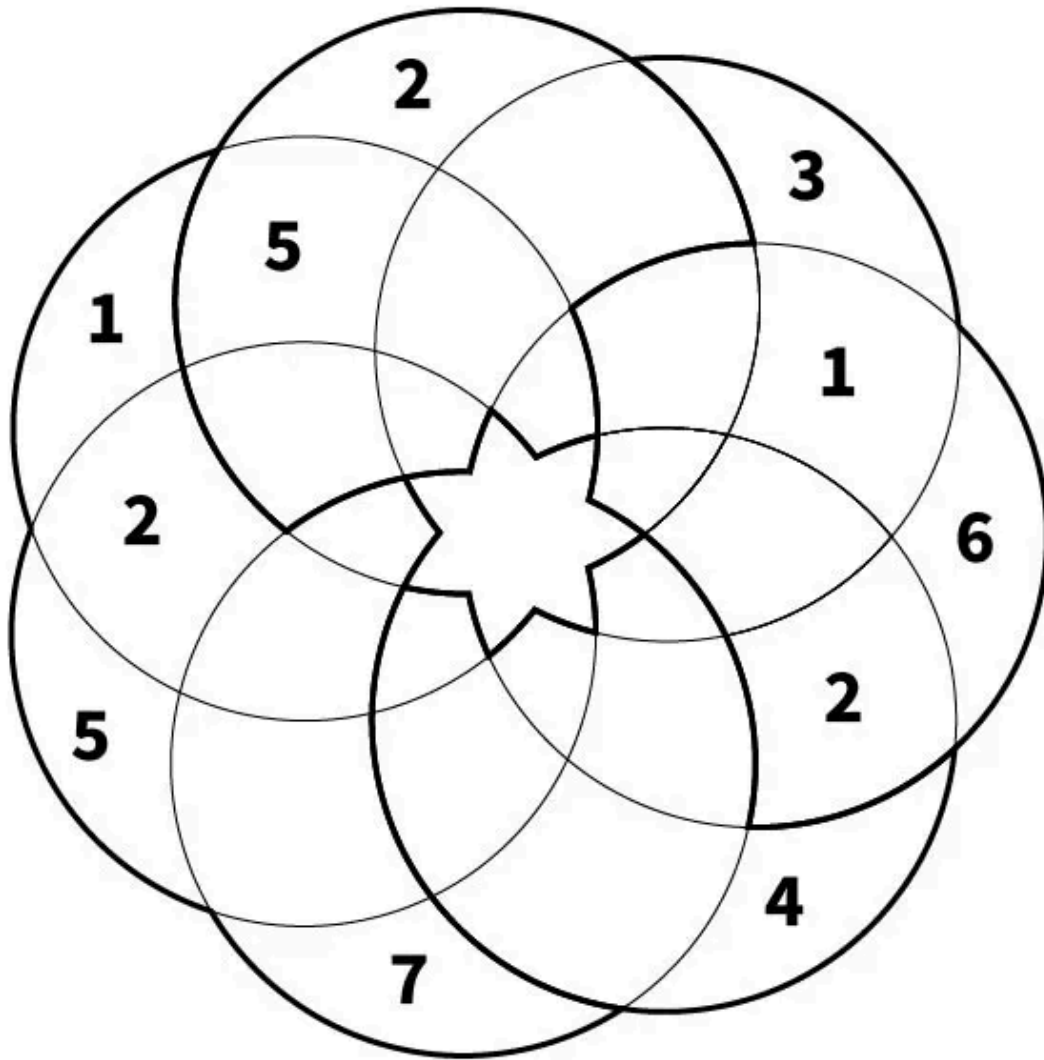
Warm regards,

William Murphy  
Acting Head of Platitudes  
GAS Enterprises

↓↓↓ (The puzzle is on the next page) ↓↓↓

# THE DOLDRUMS

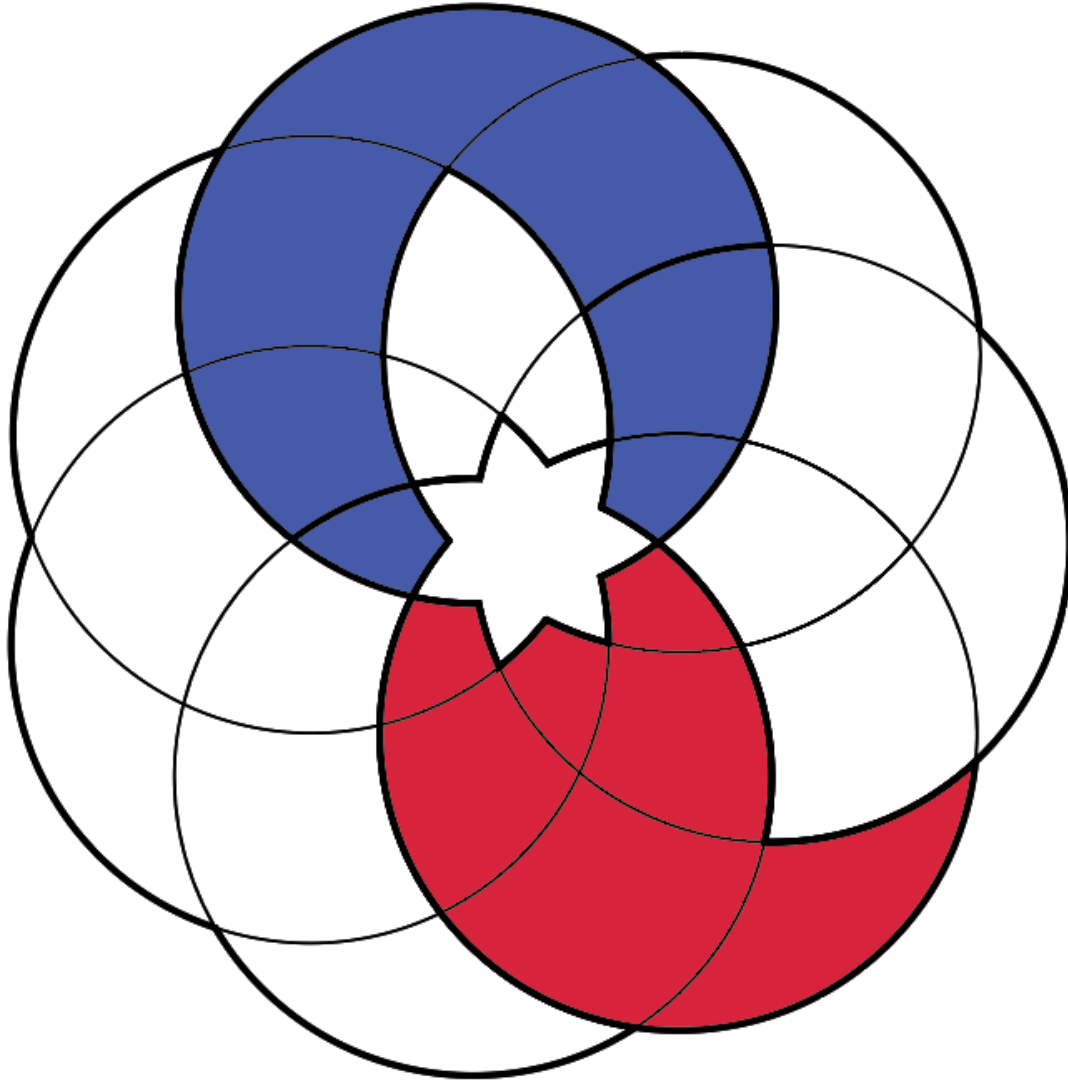
By Bill Murphy



Place the digits 1-7 in each outlined region such that there is no repeats in each region or "circular row". (See attached image.)

⇓⇓ (The example is on the next page) ⇓⇓

Example  
Blue = “Circular Row”  
Red = Outlined Region



[Note from typesetter: Original PDFs, as long as Discord has them available]

[The Doldrums.pdf](#)

[The Doldrums \(with text boxes\).pdf](#)

## April 1, 2025: Next To Nine Sudoku

by Bill Murphy

Hey, I hope you're really excited for Sudokucon on the weekend!

One of the panels I'm really excited for is @glum\_hoopoe's panel on how to create your own sudoku variant! One, Glum's just great. But two, I'm really excited to see how people innovate and develop new ideas. One of the things that I recommend is that if you're starting out, take an existing idea and just tweak it a little! You'll be surprised about how far you can go!

Today's GAS is a **Next to Nine Sudoku**!

Normal Sudoku Rules Apply. Clues outside the grid give a digit or digits that sit next to 9 in that row or column but may be in any order. (eg. a clue of 1 2 next to a row or column would indicate that 192 or 291 lie in that row.)

	1 8	7 8	1 8			4 5	3 4	4 5
1 4			4					
6								
1 2		1					3	
2 3								
6 7								
5 6		7					5	
2								
5 8						8		

<https://sudokupad.app/bnx9ry41uo>

## April 1, 2025: Next To Next To Nine Sudoku

by Bill Murphy

Hey, I hope you're really excited for Sudokucon on the weekend!

One of the panels I'm really excited for is glum\_hippo's workshop on how to create your own sudoku variant! One, Glum's just great. But two, I'm really excited to see how people innovate and develop new ideas. One of the things that I recommend is that if you're starting out, take an existing idea and just tweak it a little! You'll be surprised about how far you can go!

Today's GAS is a **Next to** next to **Nine Sudoku!**

*Normal Sudoku Rules Apply. Clues outside the grid give a digit or digits that sit next to digits that sit next 9 in that row or column but may be in any order. (eg. a clue of 1 2 next to a row or column would indicate that 1X9X2 or 2X9X1 lie in that row, where X is any other digit.)*

	2	18	78		48		34	45	6
7									
12			1						
4									
34		7							
26									
78						3			
6									
56					5				
3									

<https://sudokupad.app/hu7s78h6wl>

**April 1, 2025: Big/Small/Odd/Even/Medium Sudoku**  
by clover!

I have received several - in my opinion - downright *stodgy* complaints about this morning's GAS, suggesting that perhaps I should "watch my language" and "consider the more delicate solvers among us and their fragile sensibilities." I'm not sure what exactly their problem is, but I *think* it's related to my (admittedly questionable) decision to include Integer clues. In this puzzle, I've replaced them with "medium" clues, indicating the digits 3, 4, 5, and 6. I hope you find this puzzle somewhat less tasteless. 🙄

Normal 8x8 sudoku rules apply. Clues outside of the grid apply to the first two digits from that direction in that row or column.

- big: 5, 6, 7, or 8
- small: 1, 2, 3, or 4
- odd: 1, 3, 5, or 7
- even: 2, 4, 6, or 8
- medium: 3, 4, 5, or 6


big
odd
small
odd
medium

<b>5</b>								<b>2</b>	<b>1</b>
<b>1</b>				<b>3</b>					
big			<b>3</b>						odd
odd				<b>5</b>					small
small			<b>5</b>						odd
odd				<b>2</b>					medium
medium			<b>7</b>					<b>2</b>	
<b>2</b>	<b>3</b>								<b>8</b>

big
odd
small
odd
medium

## April 1, 2025: The Adult/In The Room

by Philip Newman

As promised, Philip now posts totally normal puzzles because someone has to keep this channel respectable...

Today's actual **Genuinely Approachable Sudoku** is are an **Entropic Lines Sudoku** and a **Modular Lines Sudoku!**

Normal sudoku rules apply.

**Entropic Lines: Along lines, each set of three cells must contain one high digit (789), one medium digit (456), and one low digit (123).** (For example, a line could contain 294396 but not 294836, because 948 does not contain a low digit.)

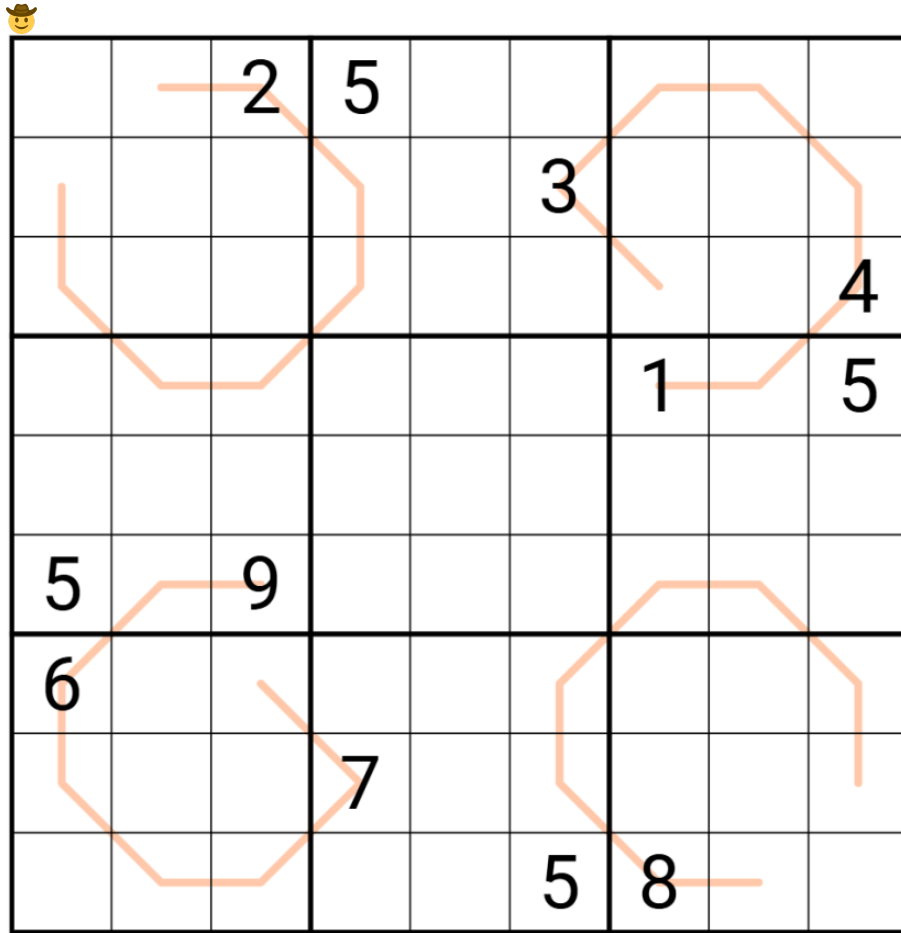
OR

**Modular Lines: Along lines, each set of three cells must contain one digit equivalent to 0 mod 3 (369), one digit equivalent to 1 mod 3 (147), and one digit equivalent to 2 mod 3 (258).** (For example, a line could contain 294534 but not 294836, because 836 does not contain a digit equivalent to 1 mod 3.)

🌟 As an added bonus task, I'd like you to participate in a little experiment! **Pick the puzzle you solve first at random, then report your times for each individual, in the order you solved them, and tell us which you liked better!** Your feedback is valuable in the future improvement of our products here at Groovy Attractive Setters, Inc. You can even earn **double the hats!** 🌟

↓↓ ↓↓ (The first puzzle is on the next page) ↓↓ ↓↓

Entropic Lines: Along lines, each set of three cells must contain one high digit (789), one medium digit (456), and one low digit (123).

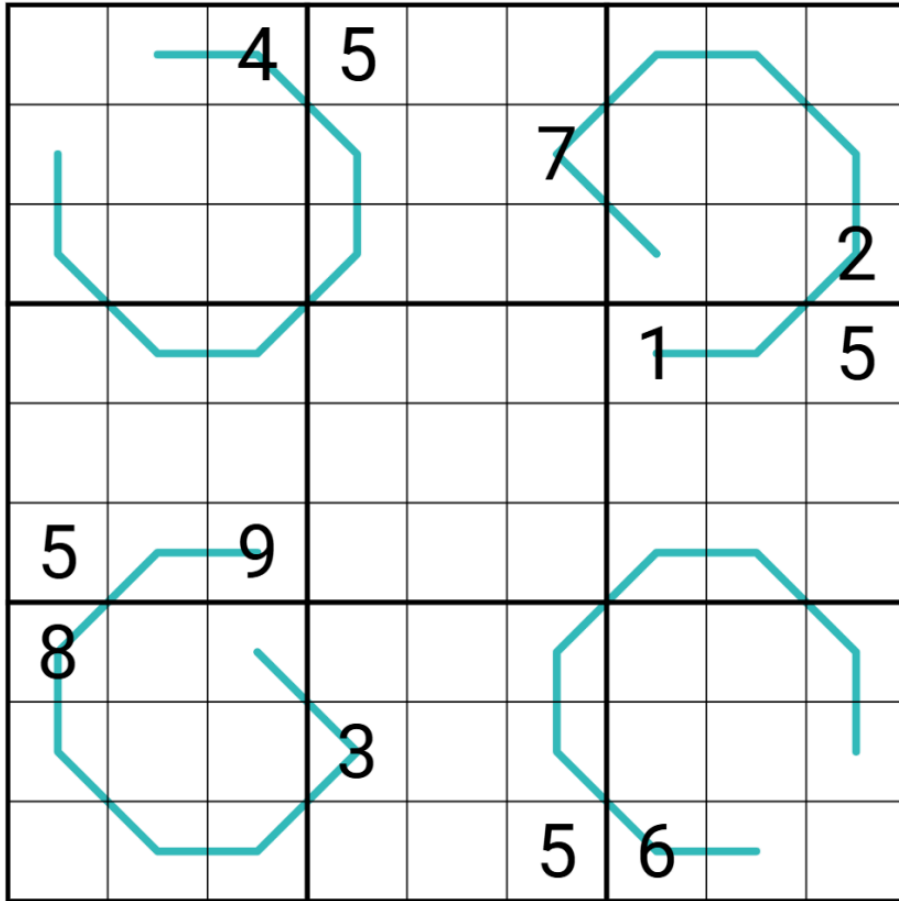


Play on SudokuPad: <https://sudokupad.app/philip-newman/20250401-the-adult>

Play on f-puzzles: <https://f-puzzles.com/?id=2bb3sama>

⇓⇓ (The second puzzle is on the next page) ⇓⇓

Modular Lines: Along lines, each set of three cells must contain one digit equivalent to 0 mod 3 (369), one digit equivalent to 1 mod 3 (147), and one digit equivalent to 2 mod 3 (258).



Play on SudokuPad: <https://sudokupad.app/philip-newman/20250401-in-the-room>  
 Play on f-puzzles: <https://f-puzzles.com/?id=22ze87xe>

## April 1, 2025: Blue Line Special

by Philip Newman

Since all of these shenanigans will probably delay the release of the March 2025 GAS Leak, I've decided to go ahead and provide an additional puzzle. As is often the case when I do puzzles on a theme, this one turned out to be just a touch harder than GAS. It solves though! You can do it! If you need a hint, I'll try to be around to provide them here (or maybe someone else can help), but I'll be sure to do a walkthrough as well. 😊

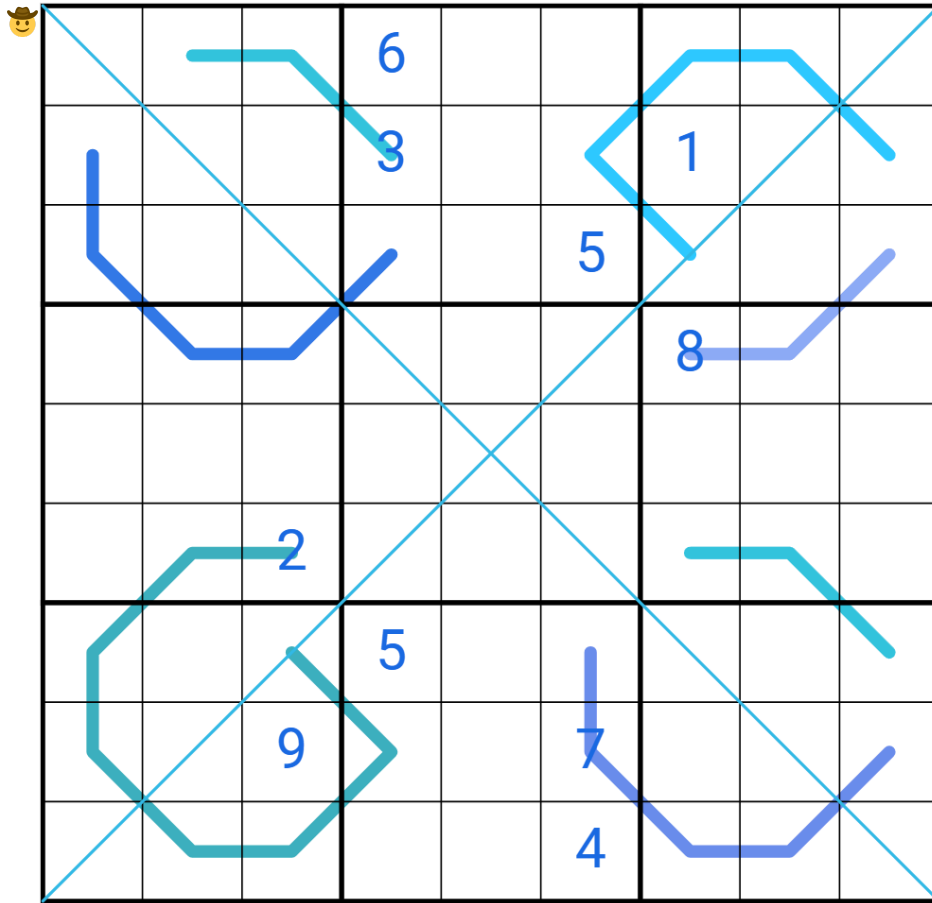
Today's bonus **Genuinely A Sudoku** is a **Blue Line Special Sudoku**!

Normal sudobblue rules apply. See SudokuPad for additional rules!

Play on SudokuPad: <https://sudokupad.app/philip-newman/20250401-blue-line-special>

[Note from typesetter: since the puzzle image was spoiled in the Discord release it's on the next page in case you **really** want to solve it here.]

Normal sudobblue rules apply. See SudokuPad for additional rules!



[Note from typesetter: if you really want the special rules and cannot open SudokuPad I included them on the next page]

Additional Rules from SudokuPad:

Along each blue digit, digits must match the blue digit. #1D6AE5

Along each blue clone line, digits must appear in the same relative positions as the other blue line. #36C4DE

Along each blue diagonal line, digits cannot repeat. #34BBE6

Along each blue modular line, each set of three cells must contain one digit equivalent to 0 mod 3 (369), one digit equivalent to 1 mod 3 (147), and one digit equivalent to 2 mod 3 (258). #3DB0BF

Along each blue palindrome line, digits must form a palindrome (read the same from either direction). #8DAAF8

Along each blue parity line, digits must alternate between even and odd; the parity configuration must be determined by the solver. #3278E7

Along each blue region sum line, the digits in every region it passes through have the same sum. (If multiple disconnected segments of a line pass through a single region, each segment separately sums to the total for the line.) #2ECBFF

Along each blue ten line, the digits can be split into contiguous, non-overlapping segments that sum to exactly 10. #6B8DEE

# April 1, 2025: Next To Next To Next To Nine Sudoku

by Bill Murphy

Hey, I hope you're really excited for Sudokucon on the weekend!

One of the panels I'm really excited for is glum\_hippo's workshop on how to create your own sudoku variant! One, Glum's just great. But two, I'm really excited to see how people innovate and develop new ideas. One of the things that I recommend is that if you're starting out, take an existing idea and just tweak it a little! You'll be surprised about how far you can go!

Today's GAS is a **Next to next to next to Nine Sudoku!**

*Normal Sudoku Rules Apply. Clues outside the grid give a digit or digits that sit next to digits that sit next to digits that sit next to 9 in that row or column but may be in any order. (eg. a clue of 1 2 next to a row or column would indicate that 1XX9XX2 or 2XX9XX1 lie in that row, where X is any other digit.)*

	7 8	5		8	2 6	4		3	3 4
1 2			1						
		2					9	4	
7			5						3
2									
1 3									
6									
5	7						1		
		8	9					6	
5 6							5		

<https://sudokupad.app/g04x7msc3g>

# April 1, 2025: Next To Next To Next To Next To Nine Sudoku

by Bill Murphy

HEY, I HOPE YOU'RE REALLY EXCITED FOR SUDOKU ON THE WEEKEND!

One of the panels I'm really excited for is glum\_hippo's workshop on how to create your own sudoku variant! One, Glum's just great. But two, I'm really excited to see how people innovate and develop new ideas. One of the things that I recommend is that if you're starting out, take an existing idea and just tweak it a little! `Y]o]u]r]f]i]f]i]f]i]f]i]f]b]e]s]u]r]r]p]r]i]s]e]d]a]b]o]u]t]h]o]w]f]a]r]y]o]u]c]a]n]g]o]!`

Today's GAS is a **Next to next to next to `n e x t t o` Nine Sudoku!**

*Normal Sudoku Rules Apply. Clues outside the grid give a digit or digits that sit next to digits that sit next to digits that sit next to digits that sit next to 9 in that row or column but may be in any order*(eg. a clue of 1 2 next to a row or column would indicate that 1XXX9XXX2 or 2XXX9XXX1 lie in that row, where X is any other digit.)

	4	5	8	1	57	3	6	7	2
1	3			9					
6							9		
5		9							
2									9
68					9				
4	9								
7								9	
8			9						
3						9			4

<https://sudokupad.app/uwbwuskr57>

## April 2, 2025: Irregular Sudoku

by clover!

Good morning, friends! I hope your April Fool's Day hangover is mild and you aren't feeling utterly foolish today. We'll do it again next year, bigger and better. 😊

Today's GAS is an **irregular sudoku**! Normal sudoku rules apply, except that the regions are irregularly shaped.

1	2	3			9	4	5	
4	5	6		2	3	7		
9			5	1	7			2
		4	8	9		5	6	7
	7	5	2			8	9	1

SudokuPad: <https://sudokupad.app/ozx8had1ku>

## April 3, 2025: Personal Responsibilities

by Bill Murphy

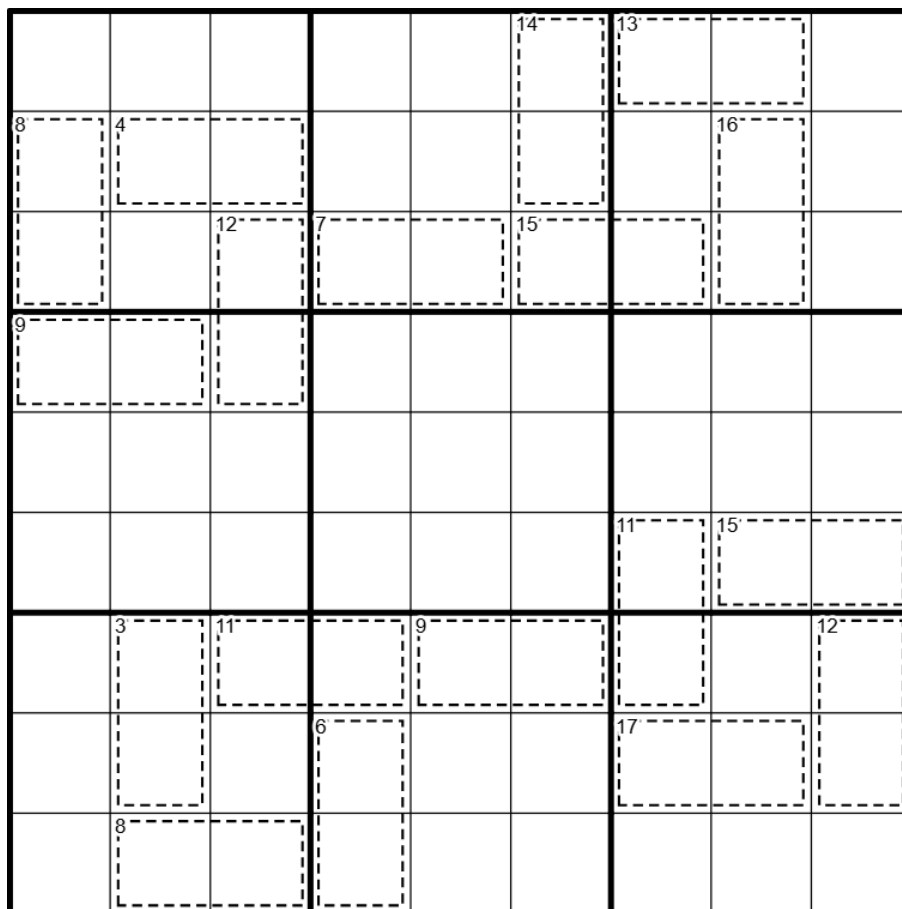
Walkthrough for Irregular when i finish school term (tomorrow)

(i did a half hour poetry reading instead, the comments made me laugh)

🐞🐝 hey, i nOpE Y@U'R e rEaLLY @χαΤΕD /OR SuDoKuCσnŌN the wEekEπd! 🐼🌸

...because Clover and Philip are doing a live recording of the walkthrough for today's **Killer Sudoku!**

*Normal Sudoku Rules Apply. Digits in cages must sum to the given total.*



<https://sudokupad.app/6zn4ghxmhj>

# April 4, 2025: SudokuCon 2025

by Philip Newman

Pure Chaos Energy Walkthrough of "Personal Responsibilities" by Bill:

<https://youtu.be/6BZ5JhVnjw>

♪ Springtime... and the living is sneezy... ♪ (sorrynotsorry @Lucian)

SUDOKUCON 🎉

I am currently operating on ~~fumes~~ whispers after a wonderful several hours in the physical presence of so many sudoku friends... and then still needing to set a puzzle for today and record two videos with @clover?... in person!

If you *aren't* here, don't forget that you can join us via livestream, go get tickets!

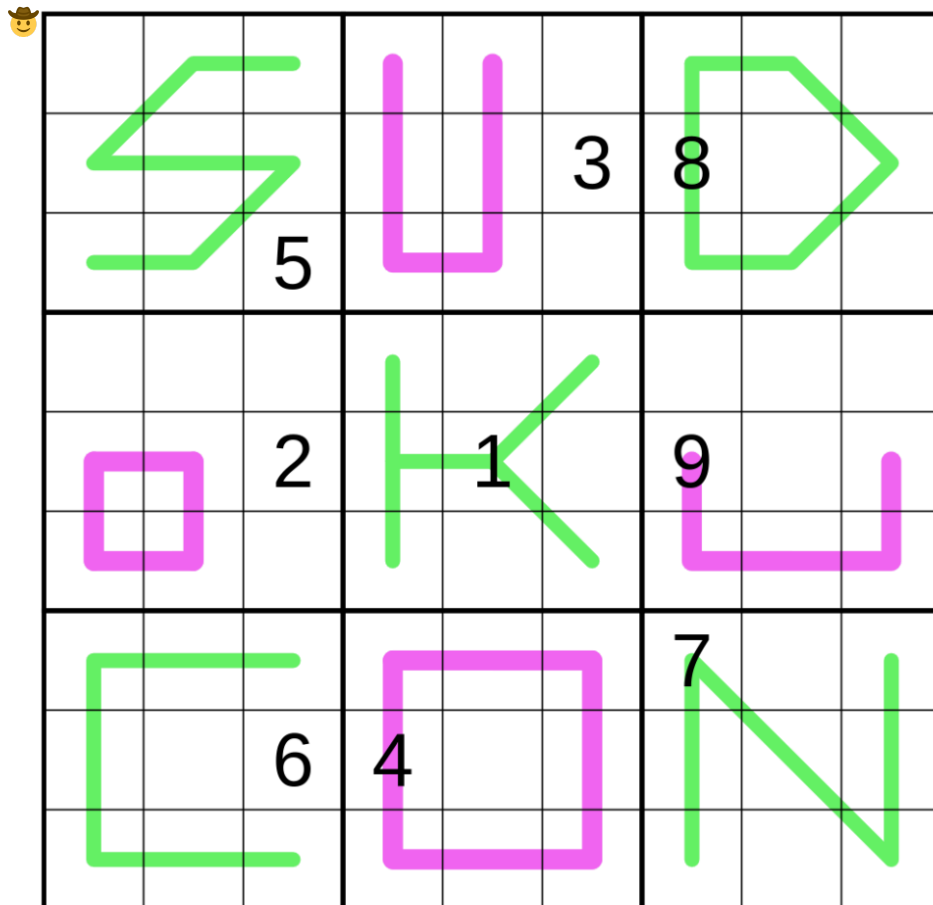
<https://sudokucon.com/livestream-tickets>

Today's **GAS** is a **German Whispers Renban Sudoku**!

Normal sudoku rules apply.

**German Whispers:** Digits in cells directly connected by a green line must differ by at least 5.

**Renban:** Digits along purple lines must form a non-repeating consecutive set, in any order. (For example, a 4-cell renban line could be 4352, but not 5679 or 2312.)



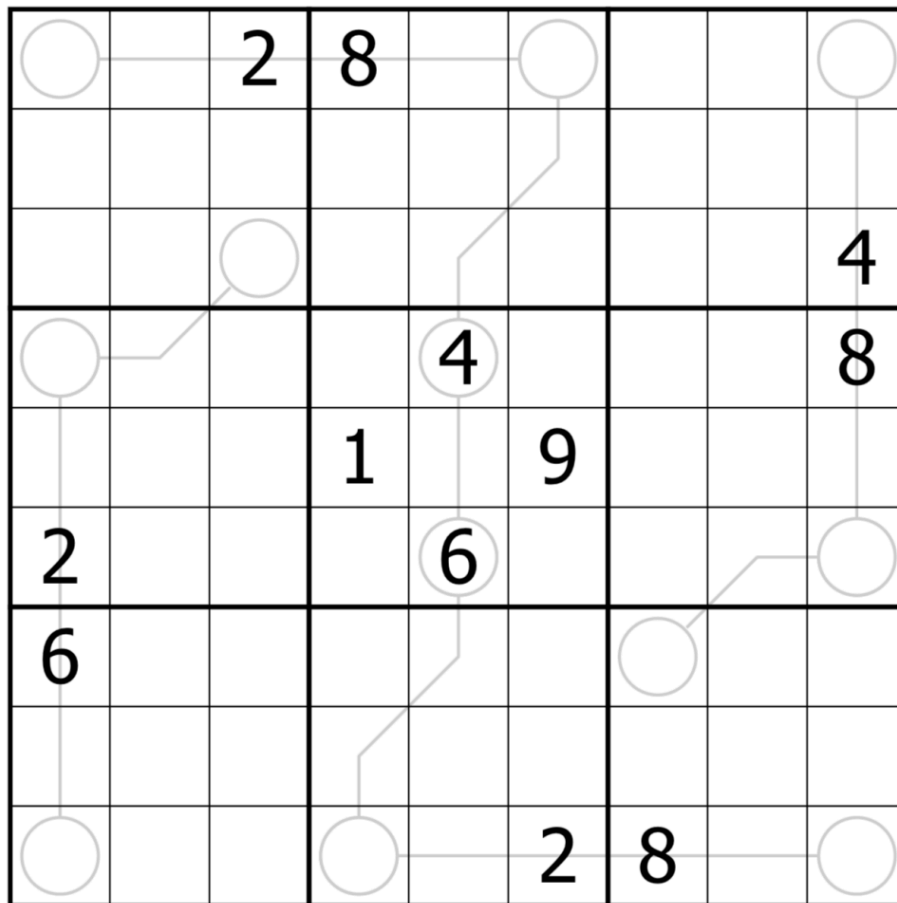
Play on SudokuPad: <https://sudokuapp.com/diu0r57cd8>

## April 5, 2025: Between Sudoku

by clover!

GOOD MORNING FRIENDS! Here's a chaotic...walkthrough? of Philip's "SUDOKUCON 2025", filmed after midnight in the ballroom at SudokuCon two nights ago. (Philip is great in person too; you all should've come to meet him. There's still a chance to get to Boston in time for his session tomorrow morning!) <https://youtu.be/G5GGRXKsmts>

Today's GAS is a between lines sudoku. Normal sudoku rules apply. Digits on lines are in between the digits in the attached circle.



SudokuPad: <https://sudokupad.app/3oh6cg6jw3>

## April 6, 2025: Double Sudoku

by Bill Murphy

♥ Thanks to my emergency solvers!

Been hunting for a ruleset where **normal sudoku rules do not apply** for a lil minute and guess what gang, you're in luck!

Today's GAS is a **Double Sudoku!**

*Place a digit from 1-4 in each empty cell so that each digit appears exactly twice in each row, column, and outlined region.*

<https://sudokupad.app/7h7lvx6nic>

♥ Thanks to my emergency solvers!

Been hunting for a ruleset where **normal sudoku rules do not apply** for a lil minute and guess what gang, you're in luck!

Today's GAS is a **Double Sudoku!**

*Place a digit from 1-4 in each empty cell so that each digit appears exactly twice in each row, column, and outlined region.*

1					3		1
	2		3	4		2	
		3			3		1
			4	4		2	
	3		1	1			
4		2			2		
	3		1	1		3	
4		2					4

<https://sudokupad.app/7h7lvx6nic>

## April 7, 2025: Non-suspicious Setup

by Philip Newman

Walkthrough of "Double Sudoku" by Bill:

[https://youtu.be/HF1\\_UjtZmvE](https://youtu.be/HF1_UjtZmvE)

I had an absolutely fantastic weekend at SudokuCon! I'm not going to go into too much in this particular intro, though there will be more references coming (*if you know you know*). Today's puzzle is "inspired" by something I discussed during my part of the Sunday morning session with Mitchell Lee... don't worry if you recognize it, I promise this version is GAS!

Today's **GAS** is a **Classic Sudoku**!

Normal sudoku rules apply. **And that's it!**



5	7					9		
								8
	1			5			3	
		1	6	8			4	
		7			2	8		9
		2		9	4	1	6	
				2				
	6	5	9		8	2		4
			4	1		6		

Play on SudokuPad: <https://sudokupad.app/philip-newman/20250407-non-suspicious-setup>

Play on f-puzzles: <https://f-puzzles.com/?id=28ahaj7o>

## April 8, 2025: Scattered Sudoku

by clover!

Walkthrough for Philip's "Non-suspicious Setup": <https://youtu.be/UKOfWkLc01c>

I'm also back from SudokuCon, a bit **scattered**, and I'm going through the GAS complaints box. A few loose ends apparently got sent to us instead of the main SudokuCon address - can somebody claim these complaints so I can address them properly?

Tallcat is too tall; next year, can he walk around with a portable hole to stand in?

The SudokuCon logo isn't solvable. I tried.

Why did you let the hotel host the under-12 world screaming loudly championships on the same weekend?

Today's GAS, appropriately, is a **scattered sudoku**. Fill the grid with the digits 1-9 so that each row, column, and irregular region contains each digit exactly once. The set of gray 'scattered' cells that do not belong to any region, also contains each digit exactly once.

2		3		4		6	1	5
			3	2	5			
	2	8						
						2	9	
			5	9	7			
5	9	4		6		7		8

SudokuPad: <https://sudokupad.app/5lu4at85nr>



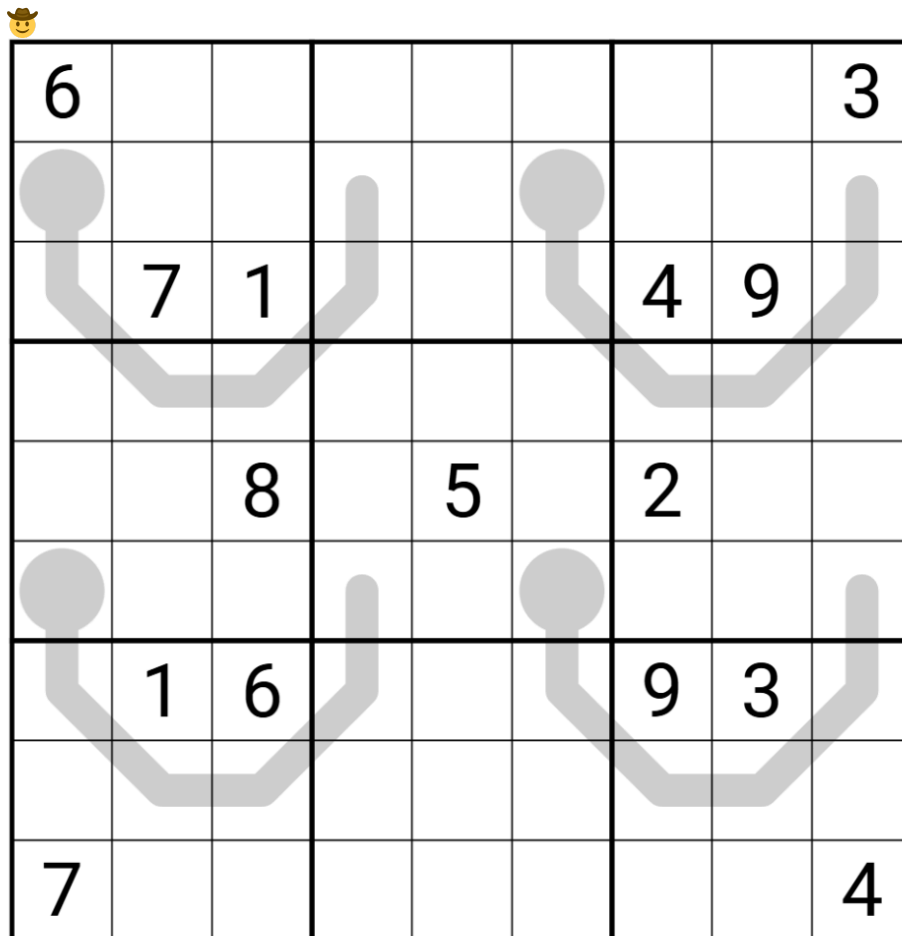
**April 10, 2025: Irresponsible Miso**  
by Philip Newman

Today's **GAS** is a **Thermo Sudoku!**

It is also four bowls of Miso Soup. Some might call that an *irresponsible* amount...

Normal sudoku rules apply.

**Thermo: Digits along thermometers must strictly increase from bulb to tip.**



Play on SudokuPad: <https://sudokupad.app/philip-newman/20250410-irresponsible-miso>

Play on f-puzzles: <https://f-puzzles.com/?id=2aao3f4t>

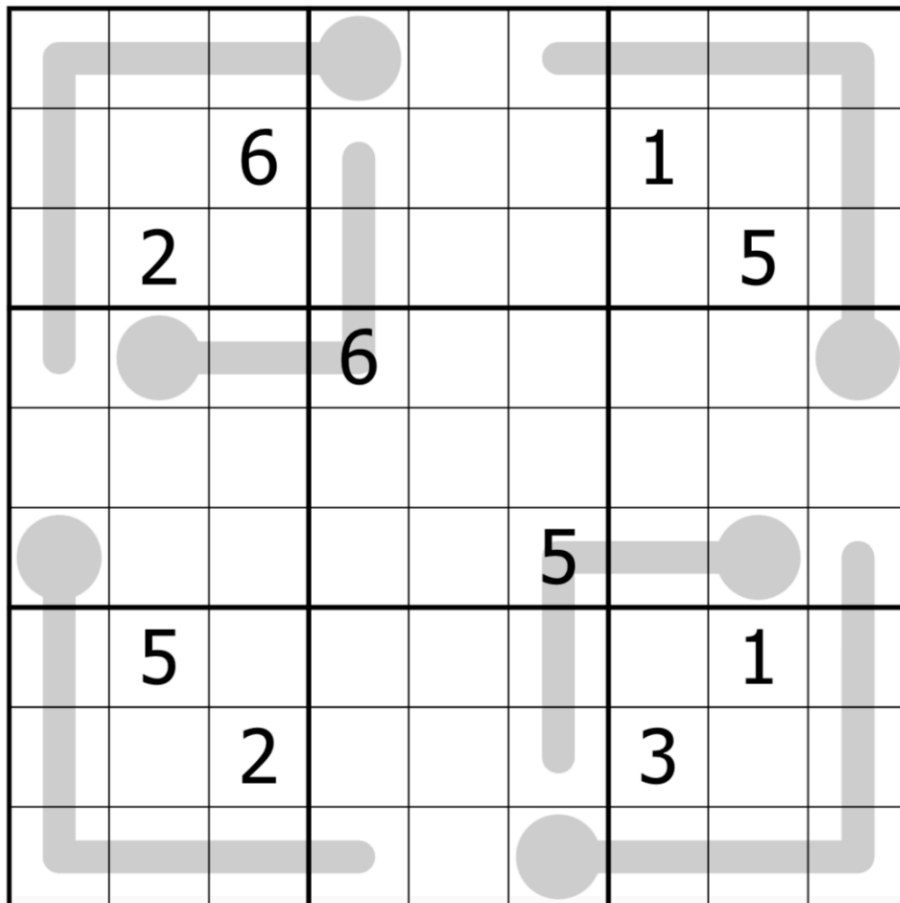
**April 11, 2025: Thermo**  
by clover!

Walkthrough for Philip's "Irresponsible Miso": <https://youtu.be/lu3-go5k95o>

Today's GAS is a **thermo sudoku**!

It is also four bowls of Miso Soup, which have been tipped over and spilled their contents onto the grid. *How irresponsible!*

Normal sudoku rules apply. Digits along thermometers must increase, starting from the round bulb.



SudokuPad: <https://sudokupad.app/13tcdnjcxi>



## April 13, 2025: Tastes Like Human

by Philip Newman

Walkthrough of "Always Ascending" by Bill:

<https://youtu.be/ryhFfHTSF-o>

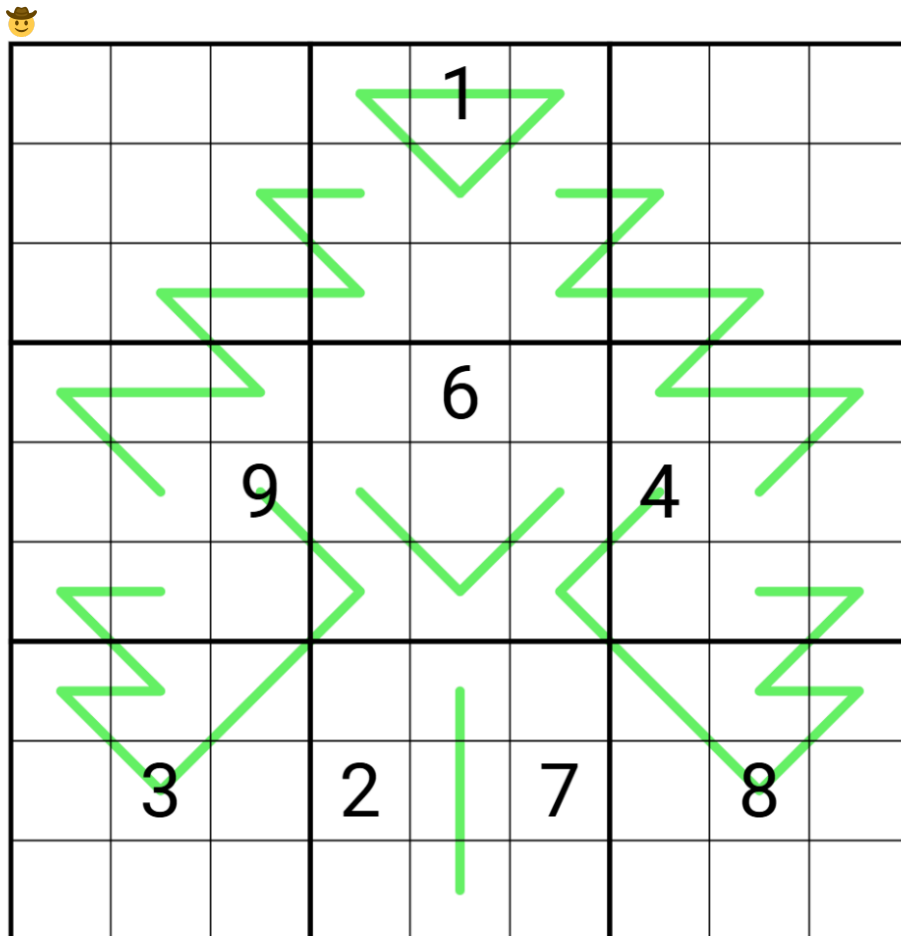
Today's **GAS** is a **German Whispers Sudoku**! It's not *difficult* but it is on the longer side so generous hat times today (and you may want to use colouring... or not, I'm not *actually* your dad).

It is also... something that tastes like human?? What?? (Bonus hat to the first person who identifies what this is supposed to be a drawing of... who doesn't already know the answer! And a separate bonus hat to the first person who guesses what it actually tasted like... allegedly.)

[See the spoiled text on the page near the end of this Leak]

Normal sudoku rules apply.

**German Whispers: Digits in cells directly connected by a line must differ by at least 5.**



Play on SudokuPad: <https://sudokupad.app/philip-newman/20250413-tastes-like-human>

Play on f-puzzles: <https://f-puzzles.com/?id=257syz22>

**April 14, 2025: Renban**  
by clover!

Good morning, friends! Today's GAS is a wiggly lil **renban sudoku**. It's been raining, and all the renbans have come up from the grass and are writhing around out there. Do them a favor and give them a few digits, would you?

Normal sudoku rules apply. Each pink line contains a set of consecutive digits, which may appear in any order (such as 24653).

		8	7	6	5	3	4	
7								
6								1
5								4
4								3
3								5
2								7
								6
	3	4	5	7	6	9		

SudokuPad: <https://sudokupad.app/50inrizvti>

## April 15, 2025: Detection Sudoku

by Bill Murphy

wee-woo wee-woo wee-woo

it's digit season

(i can't use the rotating light, we save those for negative constraints)

Today's GAS is a **Detection Sudoku**!

*Normal Sudoku Rules Apply. Digits in cells with arrows must appear at least once more in the direction that the arrow points. Not all arrows are given.*

	3		1					
		4		2				8
							6	
								3
	8						4	
7								
	5							
4				6		8		
					5		7	

<https://sudokupad.app/yx27sb0c2m>

## April 16, 2025: Soy Sauce

by Philip Newman

Walkthrough of "Detection Sudoku" by Bill:

<https://youtu.be/kDLAKSutyT4>

Today's **GAS** is a **German Whispers Region Sum Lines Renban Sudoku!** Whew, what a mouthful. Not unlike the subject of today's artistic production.

**Disclaimer:** Do not drink a lot of soy sauce, it can actually be very harmful because of the high salt content! 🌈 The more you know.

This is the final in our trilogy of silly in-jokes from our random sushi dinner at SudokuCon! My next puzzle will reference one other thing from SudokuCon... and then maybe I'll make some normal\* puzzles.

\* Relative to a typical Philip Newman puzzle. >\_>

Normal sudoku rules apply.

**German Whispers: Digits in cells directly connected by a green line must differ by at least 5.**

**Region Sum Lines: Along each blue line, the digits in every region it passes through have the same sum.** (For example,  $r2c3 + r3c3 = r4c3 + r5c2 + r6c2$ , etc.)

**Renban: Digits along purple lines must form a non-repeating consecutive set, in any order.** (For example, a 4-cell renban line could be 4352, but not 5679 or 2312.)

Note in case of color blindness: The bottle on the right is German Whispers, the bottle on the left is Region Sum Lines, and the cap is Renban.

↓↓ ↓↓ (The puzzle is on the next page) ↓↓ ↓↓

German Whispers: Digits in cells directly connected by a green line must differ by at least 5.  
 Region Sum Lines: Along each blue line, the digits in every region it passes through have the same sum.  
 Renban: Digits along purple lines must form a non-repeating consecutive set, in any order.




Play on SudokuPad: <https://sudokupad.app/philip-newman/20250416-soy-sauce>  
 Play on f-puzzles: <https://f-puzzles.com/?id=2xragzm2>

**April 17, 2025: Palindrome**  
by clover!

Walkthrough for Philip's "Soy Sauce": <https://youtu.be/6uZTG6aFjyA>

*What's that? Wigglers again?*

The earthworm *Aporrectodea caliginosa*, or the "gr(a/e)y worm", is native to two places on this cursed planet: Britain, and this puzzle. Enjoy!

Normal sudoku rules apply. The digits along each gray worm form a palindrome (read the same forwards and backwards).

1	2		3	4	5		6
							5
9							8
5							3
2							4
7							
6			5	9	7	8	1

SudokuPad: <https://sudokupad.app/jcrj41obp2>

## April 18, 2025: Sick Beat

by Bill Murphy

Today's GAS is a **Renban Sudoku**. Renban, of course coming from the Japanese for "serial" or "Consecutive" and not an anagram of banner as I first thought when I saw them, which would be a thematic application of the rule.

*Normal Sudoku Rules Apply. Digits along a purple line must form a set of consecutive digits but may be in any order.*

	2	3			5			
4		8					5	
	5					2		6
			5			7	8	

<https://sudokupad.app/qkxnjdyh94>

## April 19, 2025: Giddy Gattaites

by Philip Newman

Walkthrough of "Sick Beat" by Bill:  
<https://youtu.be/tmLC1hwNh3Q>

I've finished my exploration in drawing sushi-related things in a sudoku grid (for now...) but I've got one more puzzle referencing something from SudokuCon 2025: @clover?'s live in person release of Bitty Bites 5! (No, I still haven't gotten back to that Full Rank monstrosity 🤪)

Today's **GAS** is a **4x4 Thermo Arrow Kropki Pairs Gattai!** (Another mouthful!) There are a lot of rules, so read them carefully if you aren't familiar with multi-grid sudoku.

Normal 4x4 sudoku rules apply in each grid.

**Gattai: Some cells appear in more than one grid; the rules of both grids apply to these cells.** Cages are a reminder for the region borders in one of the grids.

**Thermo: Digits along thermometers must strictly increase from bulb to tip.**

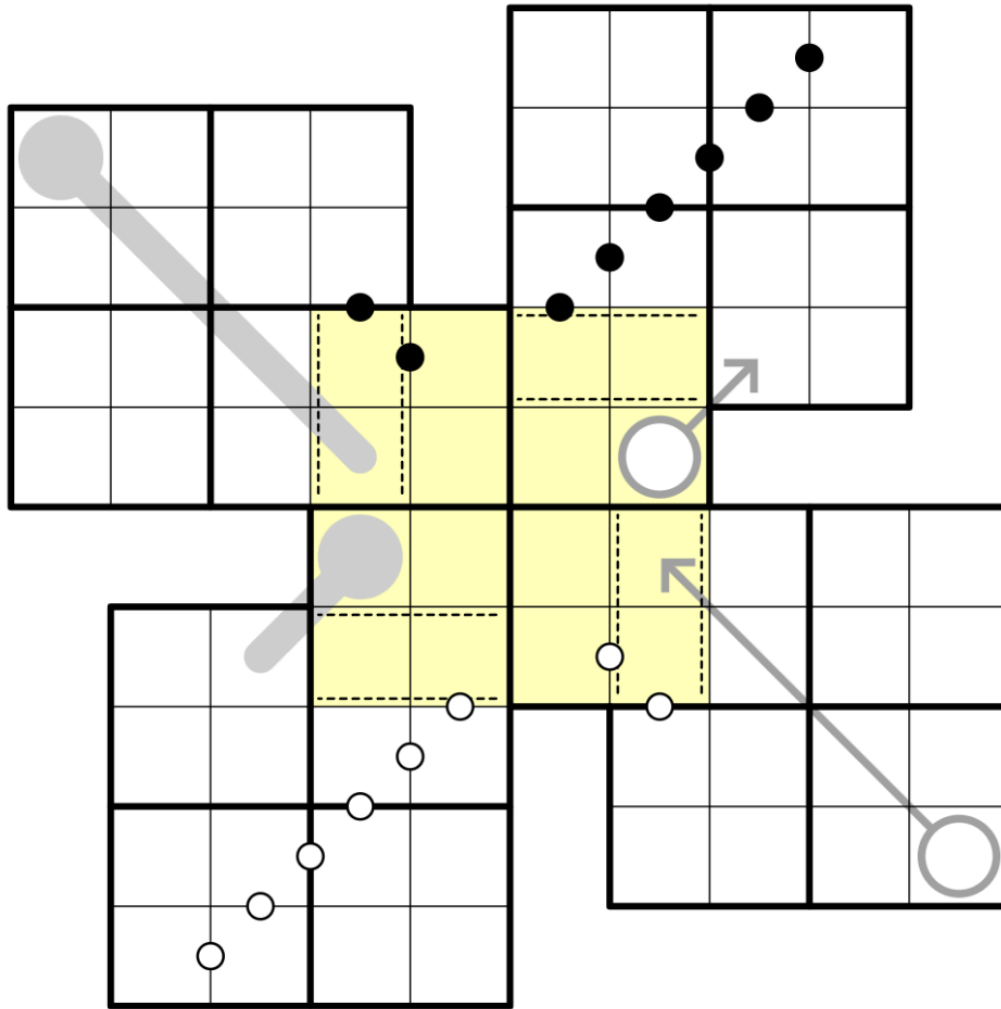
**Arrow: Digits along arrows must sum to the circled total.**

**Kropki Pairs: Digits in cells separated by a white dot must be consecutive (have a difference of 1); digits in cells separated by a black dot must have a ratio of 2:1.** (No negative constraint - other pairs of adjacent digits may have a difference of 1 or ratio of 2:1.)

Despite having five grids to fill, each is a normal 4x4 sudoku so (unlike the Bitty Bites puzzles) it's a quick solve and the two hat time is lower than normal...

↓↓ ↓↓ (The puzzle is on the next page) ↓↓ ↓↓

Gattai: Some cells appear in more than one grid; the rules of both grids apply to these cells.  
 Thermo: Digits along thermometers must strictly increase from bulb to tip.  
 Arrow: Digits along arrows must sum to the circled total.  
 Kropki Pairs: Digits in cells separated by a white dot must be consecutive (have a difference of 1); digits in cells separated by a black dot must have a ratio of 2:1.



Play on SudokuPad:

<https://sudokupad.app/philip-newman/20250419-giddy-gattaites-v2?setting-conflictchecker=0>

Play on Penpa+: <https://tinyurl.com/4ywj9r3t>

**April 20, 2025: RSL**  
by clover!

Walkthrough for Philip's "Giddy Gattaites": <https://www.youtube.com/watch?v=SjUIVDJciEE>

Good morning, friends! Good evening, actually - I've been up all night working on an extra special surprise for you all. The surprise is GAS Leak, complete with bonus puzzles. And, as usual, Engy did most of the work; I only took so long because I kept getting distracted by YouTube.

In this **region sum lines sudoku**, normal sudoku rules apply. There are some blue lines in the grid, each of which passes through multiple regions. Along each blue line, the digits in each region it passes through have the same sum. For instance,  $r3c1 = r4c1 + r4c2 + r5c2$ .

1	4		7	9		8	3
9							2
		3					8
8							6
6					7		
3							9
2	8		7	9		1	4

SudokuPad: <https://sudokupad.app/qb30ee2u5u>

**April 21, 2025: E-Pro/Never Enough (Double Sudoku)**  
by Bill Murphy

Walkthrough for RSL: <https://youtu.be/dOspy2k1sVo>

Funny that I get up to date on walkthroughs for the first time in a few weeks, only to fly away from my laptop for a week, with, uh *checks notes* the first annual leave i've ever taken in my life at the ripe old age of 33.

*imagine a bart simpson chalkboard gag, but it's me writing 'I will not let the casualisation of the workforce radicalise me' over and over again*

anyway, i'm going to the beach! different beach! do you know where i left my books i was going to bring on this trip? (don't worry, i've got enough GAS in the backlog you won't miss anything, there's a fog puzzle even)

Today's GAS is **two classic sudoku!** (At least it's not a 16x16 that you can find in March's GAS Leak)

*Put the digits 1-9 once each into each box, row and column!*

	1						2	
		9		4		3		
			1		8			
				7				
			2		3			
		5		1		6		
	4						5	
1		3		5		7		9
	2		4		6		8	

E-Pro: <https://sudokupad.app/09cjm8wu12>

⇓ ⇓ (The second puzzle is on the next page) ⇓ ⇓

Put the digits 1-9 once each into each box, row and column!

		5	6				4	
		8	7					
					3		7	6
				6			8	5
2	3			1				
1	4		8					
					4	3		
	7				1	2		

Never Enough: <https://sudokupad.app/proqm9xsho>

# April 22, 2025: In umbra pugnabimus

by Philip Newman

Walkthrough of "E-Pro" and "Never Enough" by Bill:

<https://youtu.be/5QoHNJ30bFY>

At this point, are half my GAS puzzles, or more, focused on some particular pattern? 🤔 I've got a set of four puzzles coming up with this same pattern of arrows, so you will want to get very familiar with their properties!

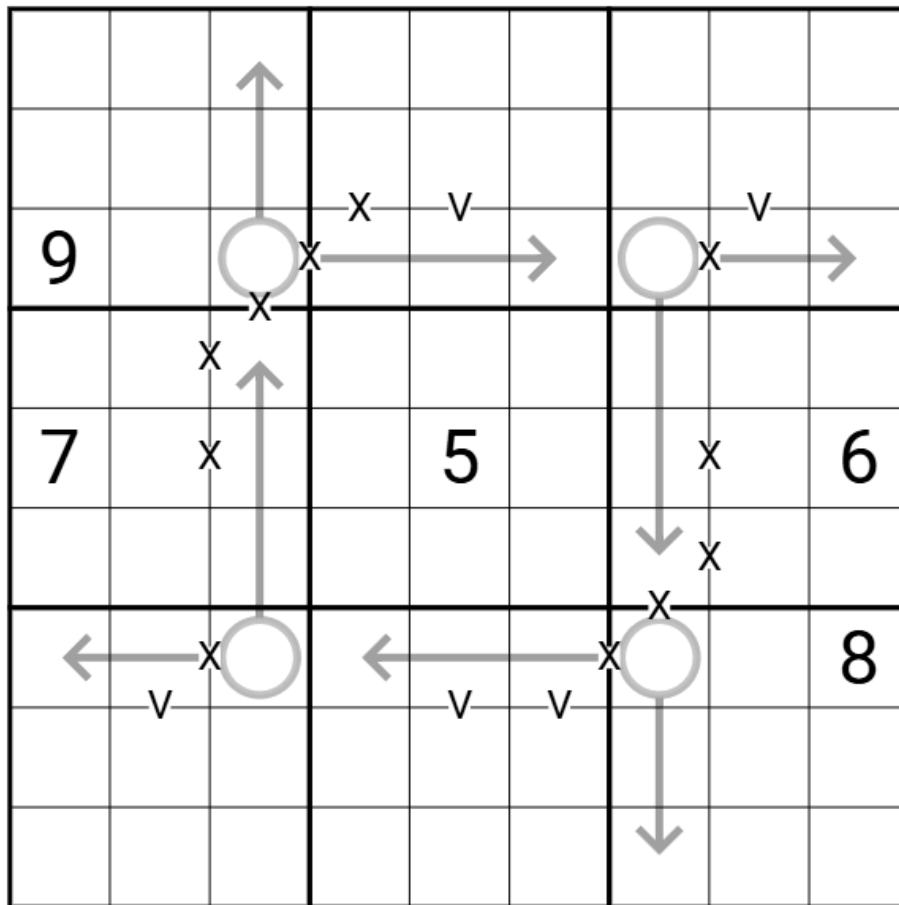
Today's **GAS** is an **XV Pairs Arrow Sudoku**!

Normal sudoku rules apply.

**XV Pairs:** Digits in cells separated by a 'V' must sum to 5; digits in cells separated by an 'X' must sum to 10. (No negative constraint - other pairs of adjacent digits may sum to 5 or 10.)

**Arrow:** Digits along arrows must sum to the circled total.

This one might be just a teensy bit spicy if you don't look in the right place... so a very small hint for those who want it: [See the spoiled text at the page near the end of this document]



Play on SudokuPad: <https://sudokupad.app/philip-newman/20250422-in-umbra-pugnabimus>

Play on f-puzzles: <https://f-puzzles.com/?id=269bn9s9>

**April 23, 2025: German Wigglers**  
by clover!

Walkthrough for Philip's "In Umbra Pugnabimus":  
<https://www.youtube.com/watch?v=3T8fp6mnD-o>

You might be thinking: Clover, worms again? Well, you'd be wrong. It's not worms today, it's caterpillars.

Little green ones.

In today's **German whispers** sudoku, normal sudoku rules apply. Along each green line, adjacent digits differ by 5 or more.

8			5	9	3	4		7
3								
9								5
2								8
5								2
								6
6		5	4	7	9			1

SudokuPad: <https://sudokupad.app/gswa837hxx>

# April 24, 2025: Catch These Fists

by Bill Murphy

Today's GAS is a 🚨🚨 Variant Killer! 🚨🚨

If you don't read the rules today, it's not my fault!!

Quick sidebar: Today's puzzle title once again comes from a Wet Leg song, but it's because I set a quadruples puzzle that I gave this title was really really neat, and it set some alarm bells off in my head, turns out, I'd set a Philip Newman puzzle from memory nearly a month after I'd solved it. Insane.

*Normal Sudoku Rules Apply. Digits in cages **must** sum to the given total and must repeat in the cage. (Eg. A valid 6 cell cage could contain 111222 or 112233, but couldn't contain 112234, because the 3 & 4 don't repeat.)*

6		6						3
						26		
	14						12	
				6				
	20		28		18			
					34			
4								1

<https://sudokupad.app/6glm0i3lka>

# April 25, 2025: Executive Dysfunk

by Philip Newman

Walkthrough of "German Wigglers" by clover:  
<https://youtu.be/SxiK5L508RU>

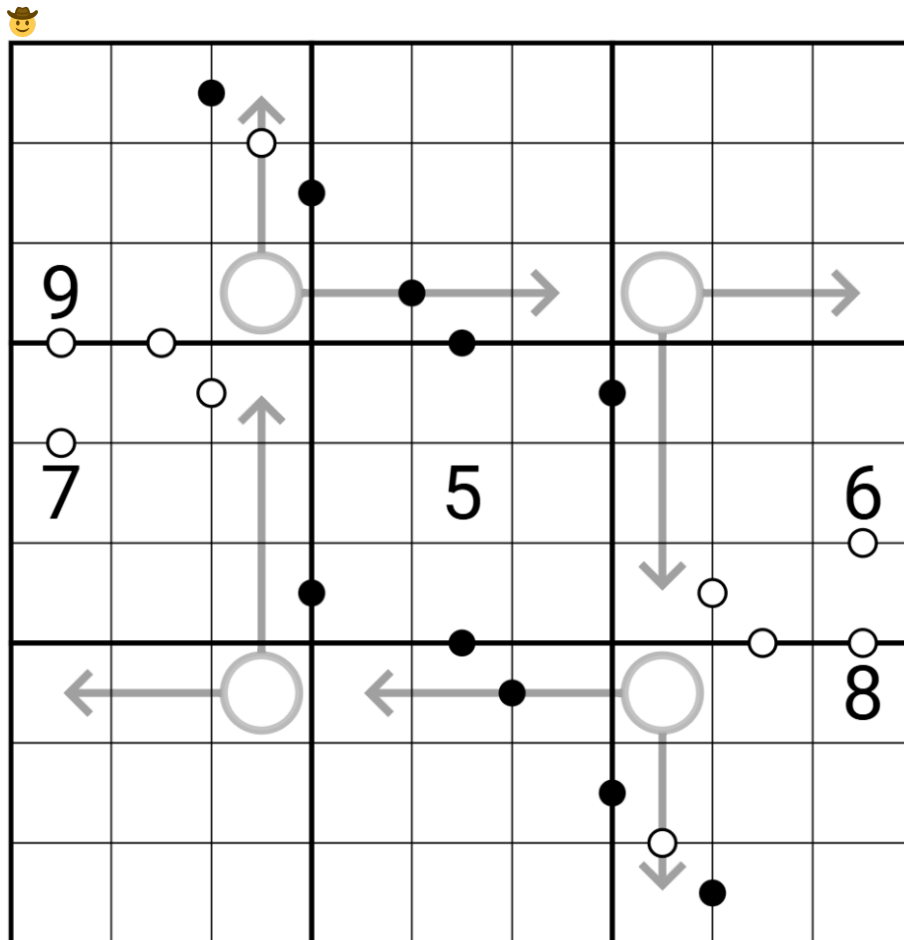
Walkthrough of "Catch These Fists" by Bill:  
<https://youtu.be/k9ZzW0lqhzW>

Has anyone seen my 🧠 today?

Today's **GAS** is a **Kropki Pairs Arrow Sudoku**!

Normal sudoku rules apply.

**Kropki Pairs:** Digits in cells separated by a white dot must be consecutive (have a difference of 1); digits in cells separated by a black dot must have a ratio of 2:1. (No negative constraint - other pairs of adjacent digits may have a difference of 1 or ratio of 2:1.)  
**Arrow:** Digits along arrows must sum to the circled total.



Play on SudokuPad: <https://sudokupad.app/philip-newman/20250425-executive-dysfunk>  
Play on f-puzzles: <https://f-puzzles.com/?id=2ysp5kb5>

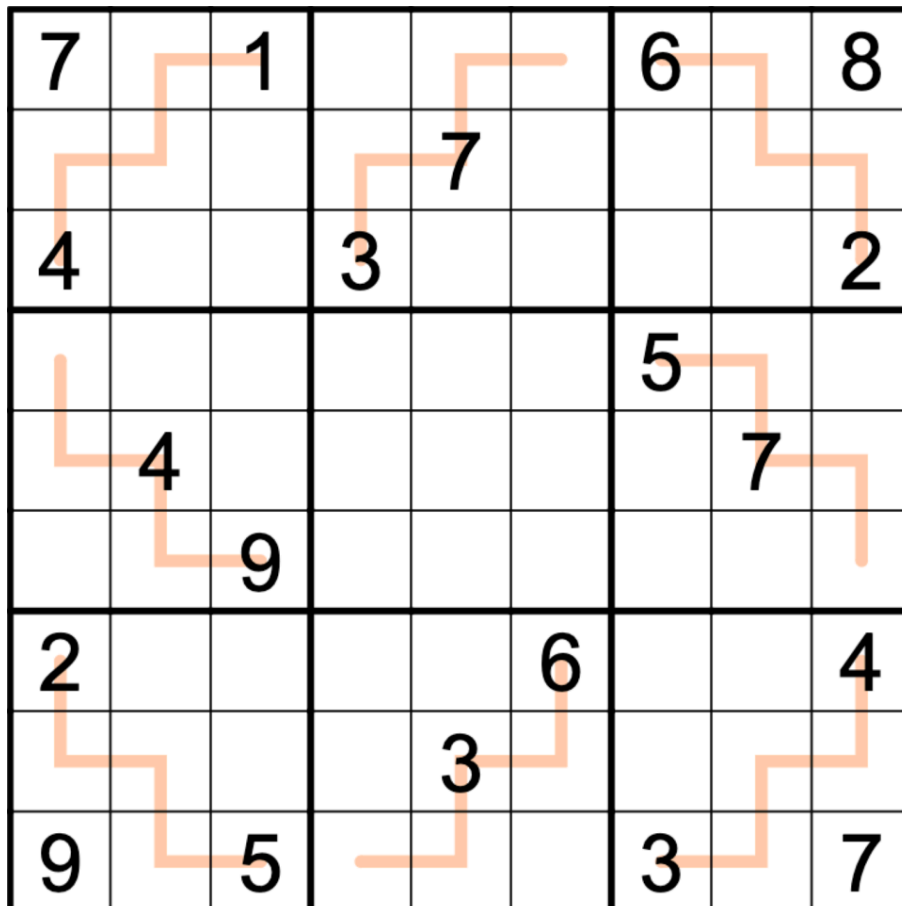
## April 26, 2025: Entropic Lines

by clover!

Walkthrough for Philip's "Executive Dysfunk": <https://youtu.be/wfyY53VaY9s>

Today's **entropic lines GAS** is designed to teach you about the habits of *Amyelois transitella*, the navel orangeworm. Protect your navels while solving. 🐛

Normal sudoku rules apply. Along each orange worm, every set of three adjoining digits contains exactly one low (123), one medium (456), and one high (789) digit. Note that this implies that every line will have a repeating pattern of low/medium/high, such as LMHLMH or HMLHML.



SudokuPad: <https://sudokupad.app/wzm2ic8a9o>

**April 27, 2025: XV Fog**  
by Bill Murphy

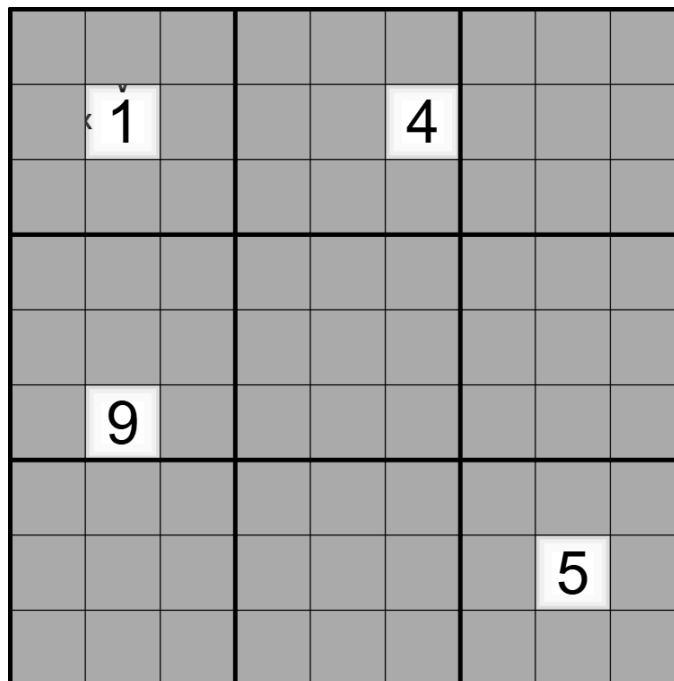
I'll catch up on clover walkthroughs when I'm home Tuesday

Gang I'm on K'Gari right now, the world's largest sand island and a world heritage listed site and let me tell you, it's very hard to think of pozzolis, when you get sunsets like this. In fact, I had some people being loud and obnoxious on the ferry over and I was just straight geeking about mangroves. (They're so sick, Sacrificial Leaves is a biological coolness)

Anyway, **Here's an XV Fog Sudoku.**

(Mea Culpa, Philip noted in testing that the Xs and Vs can look very similar half covered in a fog and he's correct, so here's the deal, I'm slightly pushing the times out to make them more generous, because I'm on holiday and we can also relax a little ❤️

Normal Sudoku Rules Apply. Digits separated by an X sum to 10. Digits separated by a V sum to 5. Not all Xs or Vs are given. The grid is covered in fog, which will lift when correct digits are placed. (Red and green circles have been edited for disambiguation)



[Note from typesetter: Unfortunately printing technique is not far enough advanced to make it solvable here. You have to use the link provided. It's worth it!]

<https://sudokupad.app/f4mwzrz3tq>

**April 28, 2025: 2025-04-28: Lunchtime/Siesta (choose your version)**  
by Philip Newman

Walkthrough of "Entropic Lines" by clover:  
<https://youtu.be/RaC9myQjPkQ>

Walkthrough of "XV Fog" by Bill:  
<https://youtu.be/LoabsDkMn90>

As we continue on this Arrow theme, you may notice that the hat times are growing... in fact, for this one Bill said "I think this would be a cleaner solve with a couple of digits towards the end". But who wants clean solves, anyway, when there's math to be done??

Oh. You do? FINE.

Today's **GAS** is a **Little Killer Arrow Sudoku!**

Normal sudoku rules apply.

**Little Killer: Digits along the indicated diagonals must sum to the total given (digits may repeat if allowed by other rules).**

**Arrow: Digits along arrows must sum to the circled total.**

You get to choose the version you want to solve! The larger LK clues are much less useful/needed for Siesta.

The harder one is "Lunchtime"

The gentler one is "Siesta"

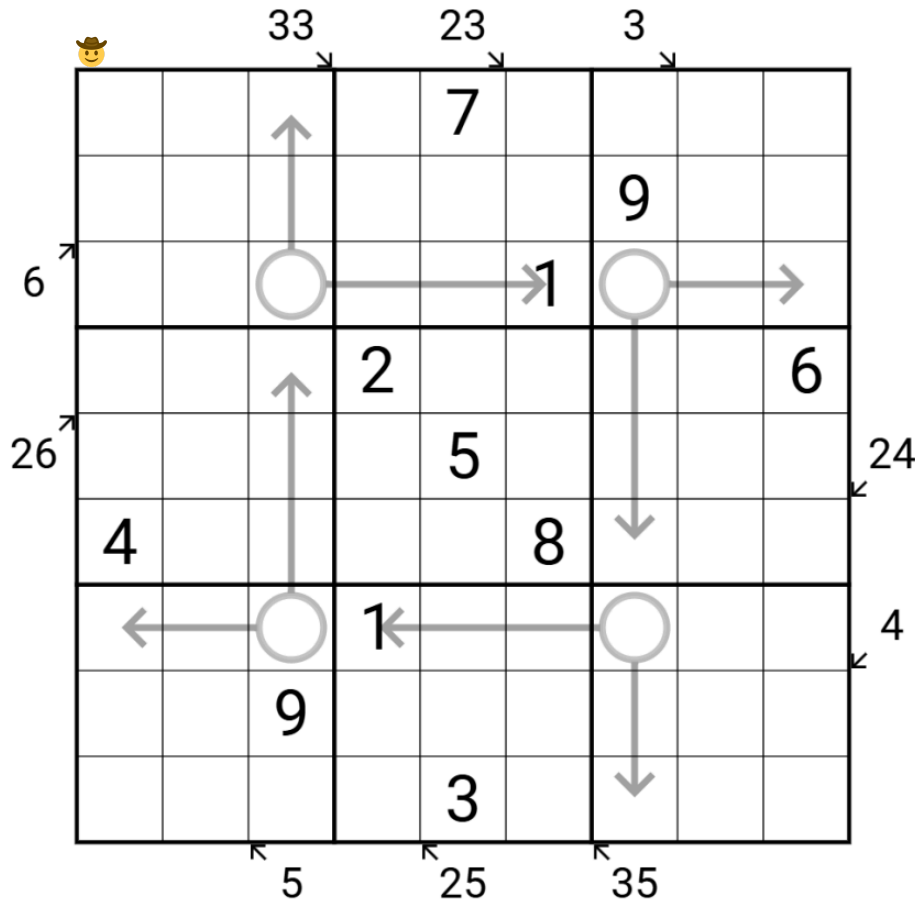
[Note from typesetter: Siesta was spoiled in the original post. Therefore „Lunchtime“ will be posted first, on the next page. Don't peek at the page after that, if you don't want that extra hints from the gentler one.]

↓↓ ↓↓ („Lunchtime“ (the harder one) is on the next page) ↓↓ ↓↓

## Lunchtime

Little Killer: Digits along the indicated diagonals must sum to the total given (digits may repeat if allowed by other rules).

Arrow: Digits along arrows must sum to the circled total.



Play on SudokuPad: <https://sudokupad.app/philip-newman/20250428-lunchtime>

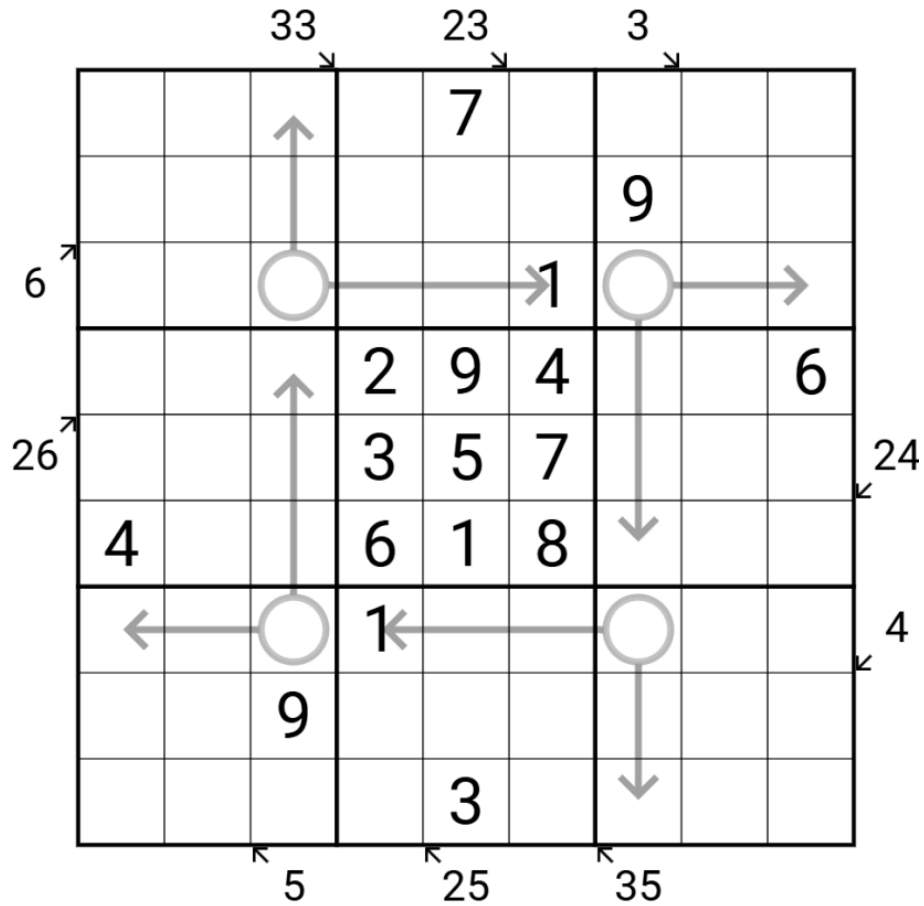
Play on f-puzzles: <https://f-puzzles.com/?id=28gv4r9w>

↓↓ („Siesta“ (the gentler one) is on the next page) ↓↓

# Siesta

Little Killer: Digits along the indicated diagonals must sum to the total given (digits may repeat if allowed by other rules).

Arrow: Digits along arrows must sum to the circled total.



Play on SudokuPad: <https://sudokupad.app/philip-newman/20250428-siesta>

Play on f-puzzles: <https://f-puzzles.com/?id=2dxgpsmn>

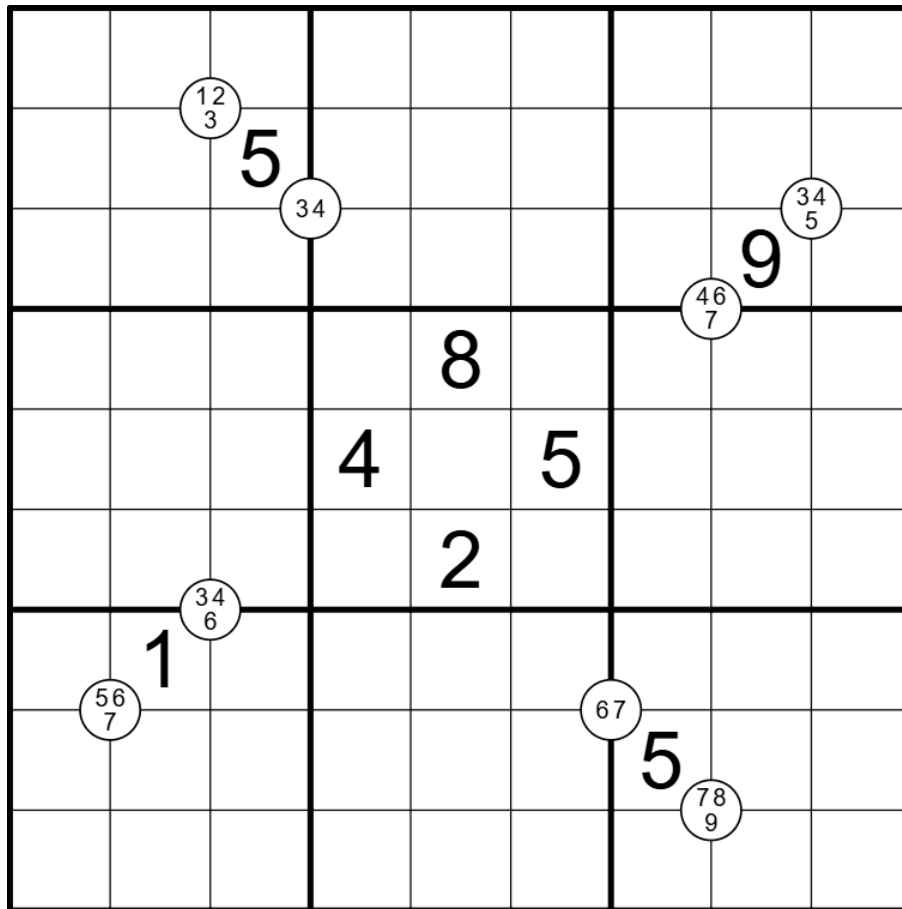
**April 29, 2025: Doves**  
by Bill Murphy

Walkthrough for Lunchtime//Siesta: <https://youtu.be/I13BXFTMzmE>

HEY THERE

I'm back from holiday, ready to do some fresh, hot **Quadruples** Sudoku, ready for you! (the crushing weight of reality setting in very quickly, yes, thanks)

*Normal Sudoku Rules Apply. Digits in circles at the intersection of four cells must appear in those four cells.*



<https://sudokupad.app/jrkyut9227>

**April 30, 2025: Between**  
by clover!

Walkthrough for Bill's "Doves": <https://youtu.be/H4rzuQltgs8>

Yesterday, for the first time since we started... I forgot GAS. @Gliperal and I are in Texas celebrating our first anniversary, a month late, and that might be the only thing that could possibly pull me away from puzzles. (Thank you for stepping in, Bill!) Picture me hanging my head in shame over here. I made you an extra-wiggly puzzle today to make up for it. 😭

Normal sudoku rules apply. Digits along lines must have values in between the values of the digits in the attached circles.

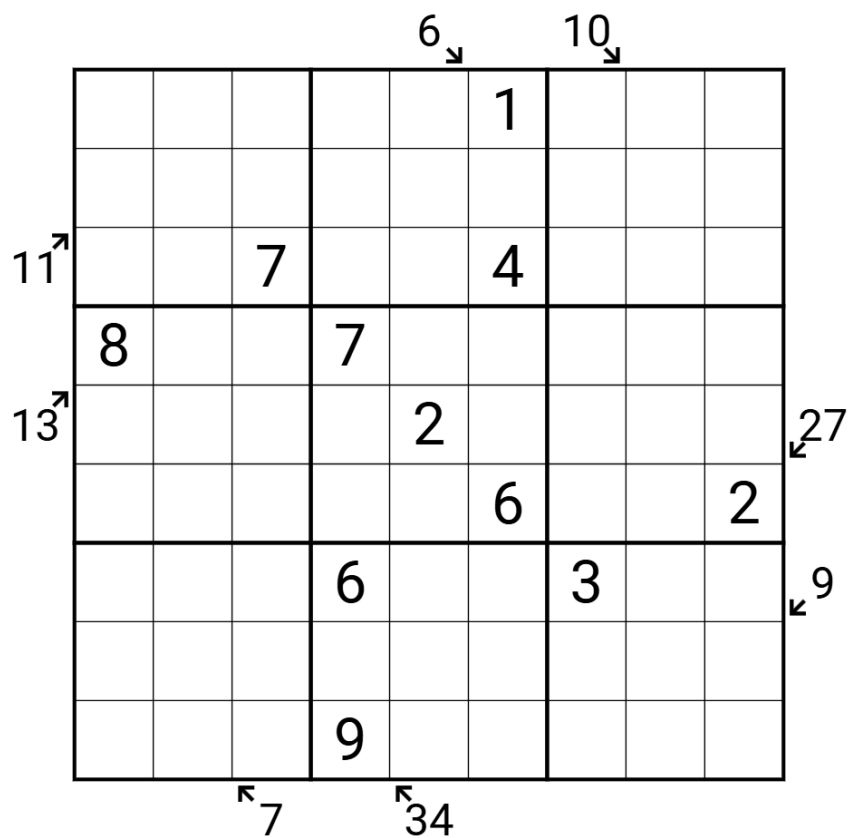
7	8		○	5	6	○	2	3
9			8					1
○								
3		○						○
○4								○6
○						○		5
								○
1					9			2
8	2	○	5	4	○		1	9

SudokuPad: <https://sudokupad.app/xavep0xvbc>

## Bonus 1: Degrees of Freedom

by Bill Murphy

Normal Sudoku Rules Apply. Clues outside the grid give the sum of digits along the indicated diagonal.



SudokuPad: <https://sudokupad.app/xplwm4n52g>

## Bonus 2: Dual Duel Suns

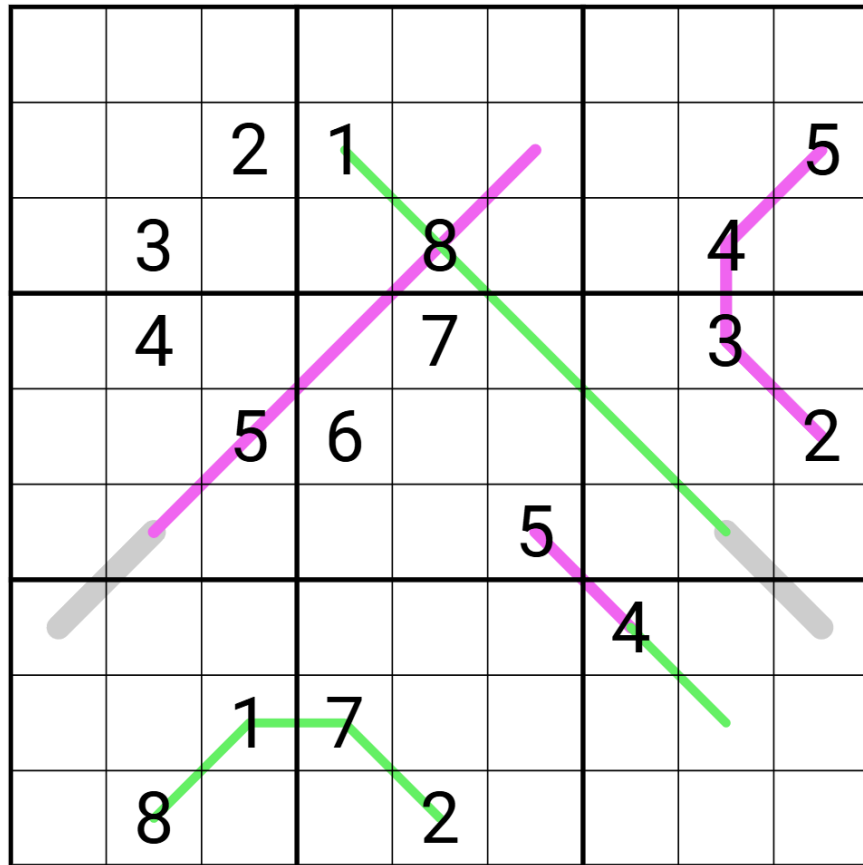
by Philip Newman

Normal sudoku rules apply.

German Whispers: Digits in cells directly connected by a green line must differ by at least 5.

Renban: Digits along purple lines must form a non-repeating consecutive set, in any order. (For example, a 4-cell renban line could be 4352, but not 5679 or 2312.)

Palindrome: Digits along a grey line must form a palindrome (read the same from either direction).



SudokuPad: <https://sudokupad.app/9kp1kw740a>

### Bonus 3: Entropic Lines

by clover!

Normal sudoku rules apply. Along each orange worm, every set of three adjoining digits contains exactly one low (123), one medium (456), and one high (789) digit. Note that this implies that every line will have a repeating pattern of low/medium/high, such as LMHLMH or HMLHML.

5	3	6		7		4	8	
9			4				1	
							9	
1						8		
	2						7	
3								
7				4			3	
2	6		1			4	9	5

SudokuPad: <https://sudokupad.app/rhi9anpw8>

**Bonus 4: Degrees of Freedom II**  
by Bill Murphy

Normal Sudoku Rules Apply. Digits along indicated totals must sum to the given total.

					8			
		9						
17					3		8	34
16		2		7				13
						1		
			2					

30 ↓
11 ↓

↖ 18
↖ 10

SudokuPad: <https://sudokupad.app/c79g4keato>



## Time Benchmarks

April Fools' Day (April 1)



Two party hats

8:00

5:00

7:00

7:00

6:00

7:00

7:00

8740:00:00

7:00

7:00



One party hat

15:00

10:00

13:00

13:00

11:00

13:00

13:00

13:00

13:00



Today's dinosaur:

prurient Pyraptor

Professional Paluxysaurus

Succeeded Shantungosaurus

Succeeded Shantungosaurus

proper Prenocephale

Foolish Fosterovenator

Foolish Fosterovenator

Succeeded Shantungosaurus

∞UCCEEDED  
∞HANTUNGO∞AURU∞

Big/Small/Odd/Even/Prime  
/Nonprime/Integer

The Doldrums

Next to Nine

Next to next to Nine

Big/Small/Odd/Even/Medi  
um

The Adult

In The Room

Blue Line Special <sup>2</sup>

Next to next to next to  
Nine

Next to next to next to  
n e x t t o N i n e

<sup>1</sup> The real April Fool was the therapod we earned along the way.

<sup>2</sup> If you want an actual benchmark, I test solved it again just now and it took 6:36 - though of course I remembered some of how to get started...

## Time Benchmarks

	 Two party hats	 One party hat	 Today's dinosaur:
Apr 2, 2025	6:00	11:00	regular Rhabdodon
Apr 3, 2025	7:00	13:00	Deja Vulcanodon
Apr 4, 2025	8:00	20:00	SudokuCon Sauropod
Apr 5, 2025	5:51 <sup>3</sup>	12:00	beautiful Brachiosaurus
Apr 6, 2025	5:00 <sup>4</sup>	10:00	Yoshi-Like Yaverlandia
Apr 7, 2025	5:00	12:00	Yappy Yibinosaurus
Apr 8, 2025	7:00	13:00	frazzled Ferganasaurus
Apr 9, 2025	7:00	13:00	Lucky Serendipaceratops
Apr 10, 2025	7:00	13:00	Eating Eshanosaurus
Apr 11, 2025	6:00	12:00	clean Claosaurus
Apr 12, 2025	7:30	14:00	Moisturized Monoclonius
Apr 13, 2025	8:30	20:00	Banqueting Bothrosauropodid
Apr 14, 2025	6:00	11:00	vermicular Vulcanodon
Apr 15, 2025	9:00	16:00	Cardboard Box Bistahieversor
Apr 16, 2025	9:00	20:00	Inner-Circle Ischyrosaurus
Apr 17, 2025	6:40 <sup>5</sup>	12:00	slithering Sinraptor
Apr 18, 2025	6:30	12:00	Anagrammable Anabisetia
Apr 19, 2025	3:14	10:00	Bitty Bothriospondylid
Apr 20, 2025	6:00	11:00	gassy Gasosaurus
Apr 21, 2025	10:30	19:00	Misplaced Mymoorapelta
Apr 22, 2025	8:00	17:00	Utility Utetitan
Apr 23, 2025	7:00	13:00	larval Labocania
Apr 24, 2025	7:00	13:00	Fisticuffs Falcarius
Apr 25, 2025	8:30	18:00	Dysfunctional Dromicosaurus
Apr 26, 2025	6:00	11:00	meddlesome Megapnosaurus
Apr 27, 2025	8:30	16:00	Australian Atlascopcosaurus
Apr 28, 2025	9:00	19:00	Grudging Gigantoscelis <sup>6</sup>
Apr 28, 2025	7:00	15:00	Generous Gigantoscelis <sup>7</sup>
Apr 29, 2025	6:30	12:00	Piping Hot Pinacosaurus
Apr 30, 2025	7:30	14:00	embarrassed Elmisaurus

<sup>3</sup> For THREE party hats (two hats and a bonus!), beat @glum\_hoopoe and @FullDeck 's testing time of 5:51, set right here at SudokuCon!

<sup>4</sup> For an elusive, third BONUS HAT, beat Niverio's time of 1:12.

<sup>5</sup> this is the time it took Gliperal to test today's puzzle *and* next week's. He speedy

<sup>6</sup> for „Lunchtime“ (the harder one)

<sup>7</sup> for „Siesta“ (the gentler one)

## Hints and other spoiled texts

### Spoiler for April 13, 2025

The SudokuCon in-jokes continue!

### Hint for April 22, 2025:

What can r3c3 be?