

GAS Leak

Genuinely Approachable Sudoku
from the CtC Discord

Volume 44:

September 1 – September 30, 2024

Welcome to September!

We got a full month of GAS puzzles for you, one better than the other. Just in the first three days we have an „August“ puzzle, a fog of war one (only solvable online, sorry) and a puzzle by a guest setter – and that's only the beginning! Find out what else awaits you in this latest Leak of Genuinely Approachable Sudoku!

Have fun solving!

September 1, 2024: Surplus

by clover!

Walkthrough for Philip's "A Sudoku": <https://youtu.be/6dk3gommU3A>

Funny story about today's puzzle. When I set it, I marked it down as having 6 letters in the variant name, and thus as being appropriate for August 6. When I realized a few days later that I am uniquely bad at both counting and spelling, the lads encouraged me to post it on that day anyways. After all, it's strangely appropriate that it has a **surplus** (sudoku) of letters. 😊

Fill the grid with the digits 1-7 so that each row and column contains each digit exactly once, and each outlined region contains each digit at least once.

		1			4	
			1			
2					5	
	3					
				4		1
3		6				
				2		5

SudokuPad: <https://sudokupad.app/k43lo7v3uj>

September 2, 2024: Fog of Kropki

by Bill Murphy

Walkthrough for Surplus: <https://youtu.be/VGFrJDI2R7Y>

honestly i hoped someone would notice what i was doing with my thumbnails for august

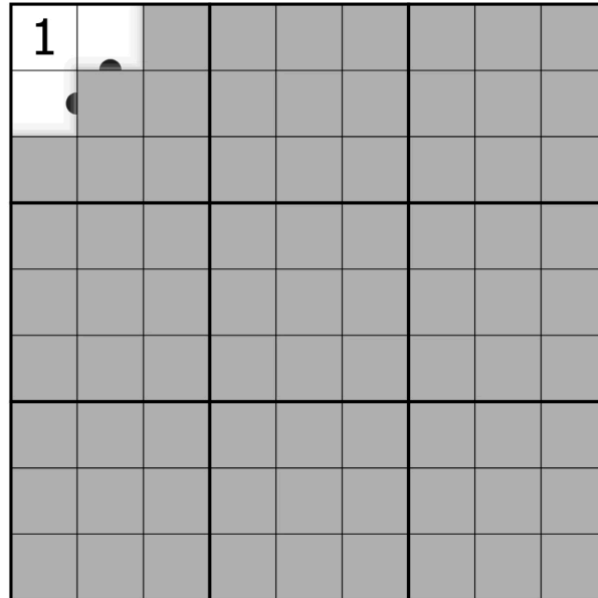
in other news, while i am v v poor and cannot make it to sudokucon, i will be demoing magic the gathering at pax aus this year! feel free to come down and learn how to sling spells like a powerful wizard

in other other news, it's not i *never* wanted to do a fog of war sudoku, but i was waiting til inspiration hit, I had to make it both **good** and **meaningful**, so yeah. Here's ya go, today's gas is a **Fog Of War Kropki** Sudoku!

P.S. My patreons got a FOW 159 this month 😊

Normal Sudoku Rules Apply. Digits separated by a black dot must be in a 1:2 relationship. Digits separated by a white dot must be consecutive. Not all dots are given. Some of the grid is covered in fog, which will lift when correct digits are placed.

[Note from typesetter: Unfortunately printing technique is not far enough advanced to make it solvable here. You have to use the link provided. It's worth it!]



<https://sudokupad.app/h629yx4ibg>

September 3, 2024: Glanville

by James Sinclair

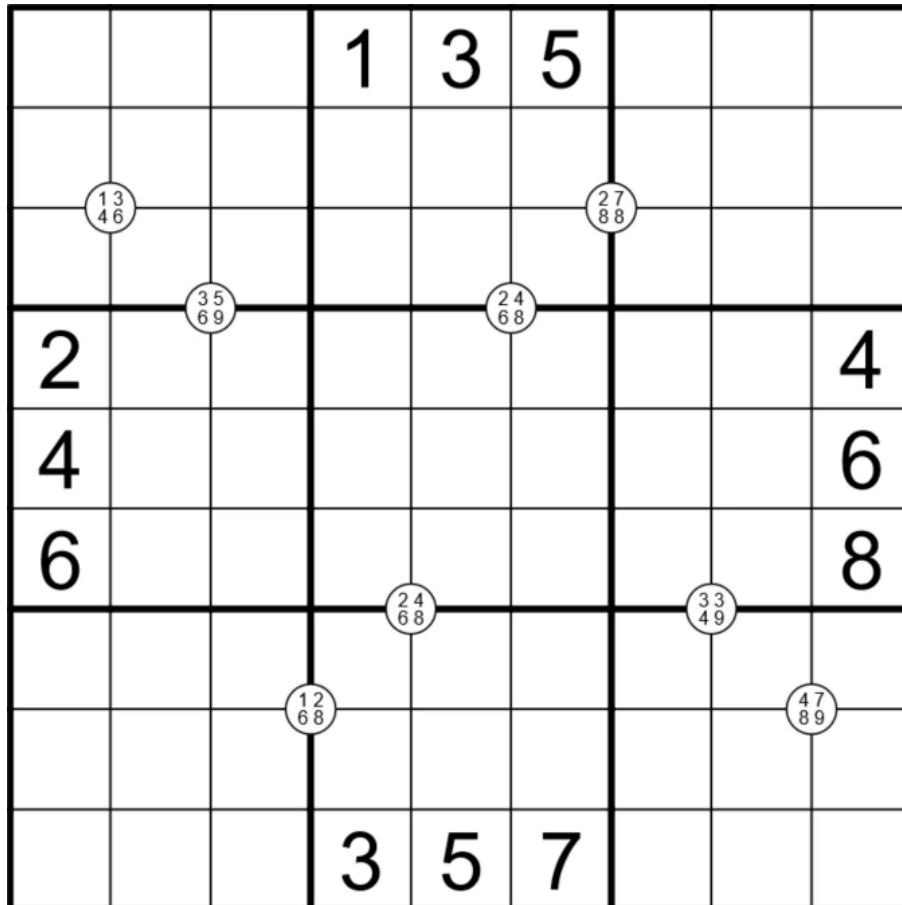
Hey everyone, it's me again, delighted to have another chance to fill in (your regular crew will be back tomorrow, I promise).

Today's GAS reflects a bit of personal growth as a setter, because it features a type of clue I traditionally avoid at all costs: given digits. In another context, I might replace that 135 at the top with a killer cage summing to 9, three odd circles, and a thermo—but, just this once, I thought I'd just put the dang numbers in the grid. You're welcome 😊

Anyway, it's called Glanville, not for any particular reason except that football season's starting, and I was recently reminded of the famous weirdo who coached my favorite team back in the 90s.

Normal sudoku rules apply.

Quadruple circles: a digit inside a white circle must appear in one of the four cells surrounding that circle (if a digit repeats in the circle, it must appear twice).



<https://sudokupad.app/qnbk6khjh8>

[Update] Walkthrough video for Bill's Fog of Kropki:

<https://www.youtube.com/watch?v=OkNyFDt8FMY>

September 4, 2024: Killer Clone

by clover!

Walkthrough for James's "Glanville": <https://youtu.be/1Lg0gakDZBg>

You know what I love? Duck boats. They're like a truck, but also a boat.

Similarly: this puzzle is a **killer sudoku** but also a **clone sudoku**.

Normal sudoku rules apply. Digits in cages do not repeat, and must sum to the indicated total. Also, identical cages with the same total, across the grid, always contain exactly the same digits in the same configuration.

10				12			1	
			10				12	
	12					10		
12		11						
8								3
	30				11		7	
				30		7		
7							30	
	6		7					

SudokuPad: <https://sudokupad.app/mh3mklp1dp>

September 5, 2024: Myopic/That's What Time Does (Double Sudoku)
by Bill Murphy

Walkthrough for Killer Clone: <https://youtu.be/ZBg9HzGrE3E>

A whole month where I couldn't post a Classic? Disgusting, let's fix that

Put the digits 1-9 in each box, row and column.

[Typsetters Note: The times given in the table near the end is for the pair combined]

		5				4		6
		1	2	3				
					7		5	
	7							1
	8			4			7	
2							3	
4		6						
				7	8	9		
	5		3			6		

Myopic: <https://sudokupad.app/5i5mja83gx>

⇓ ⇓ (The second puzzle is on the next page) ⇓ ⇓

Put the digits 1-9 in each box, row and column.

					4	8		
	6	9				2	5	
5	3				6		9	
1		2						
			8		5			
						5		3
	9		3				1	7
	7	4				9	8	
		6	2					

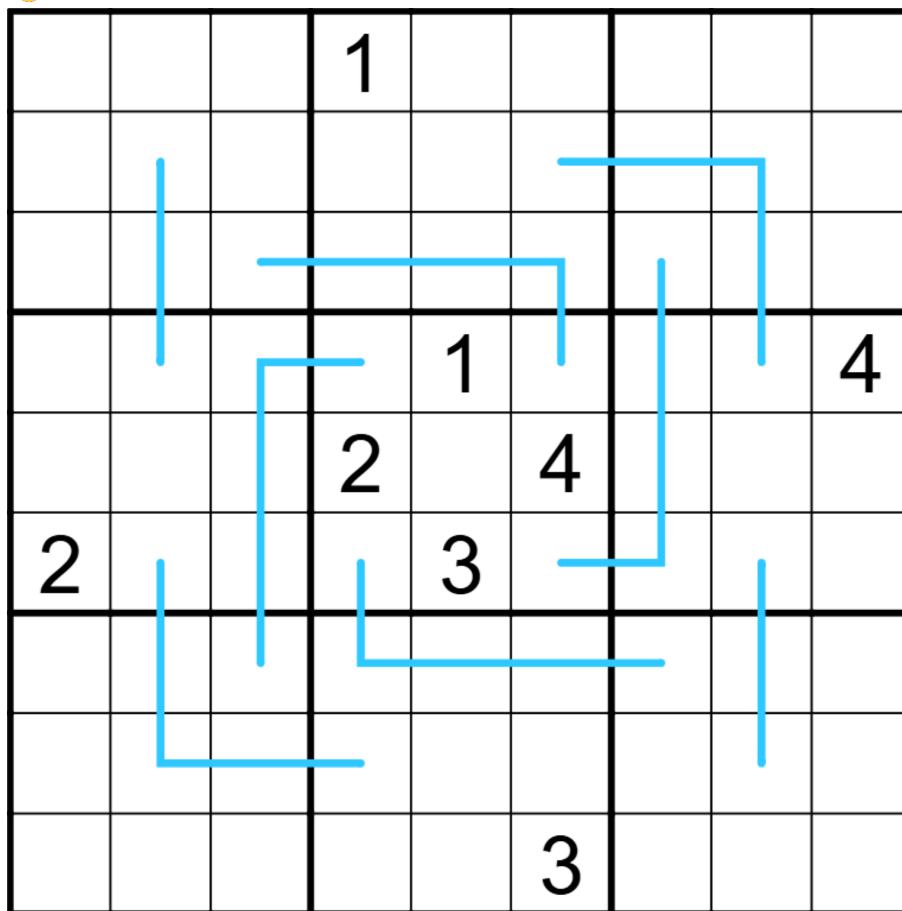
That's What Time Does: <https://sudokupad.app/w46owpsgqm>

by Philip Newman

<https://youtu.be/v5zUAqhJz3k>

Today's **GAS** is a **Region Sum Lines Sudoku**!

Region Sum Lines: Along each line, the digits in every region it passes through have the same sum.



Play on f-puzzles: <https://f-puzzles.com/?id=2yfetfxq>

September 7, 2024: Whisperdromes

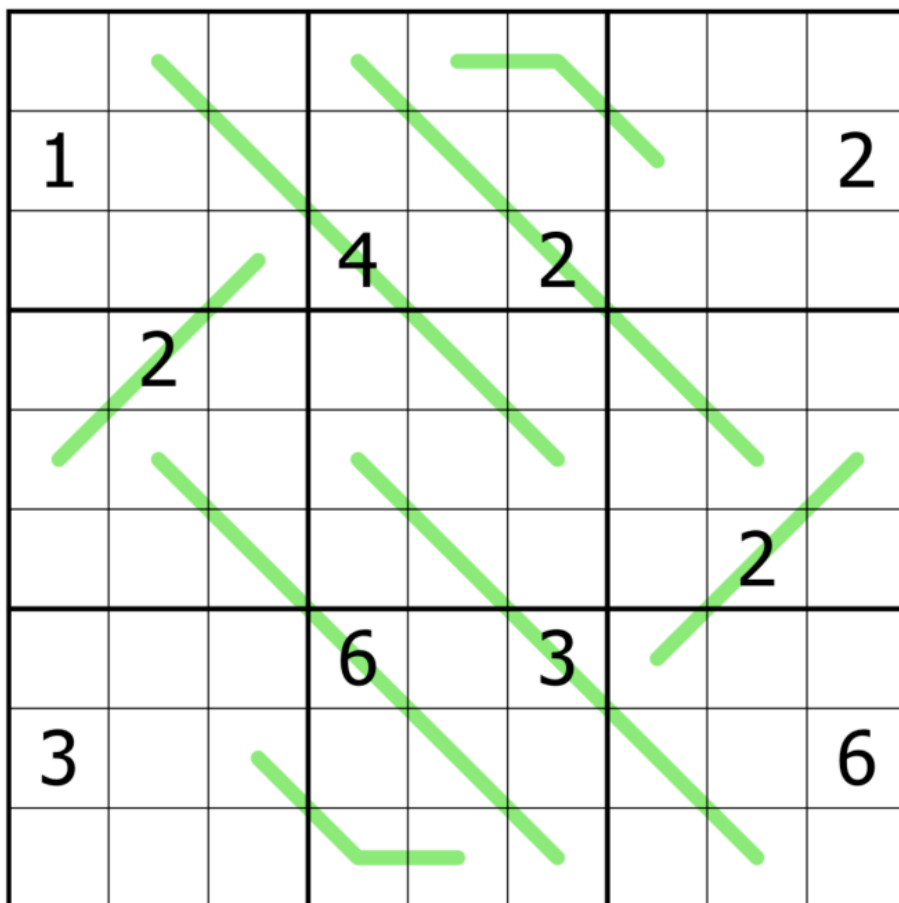
by clover!

Walkthrough for Philip's "Whirlpool": https://youtu.be/rXwMbY9_OK0

You know what I love? Sporks. They're like a fork, but also a spoon.

Similarly: this puzzle is a **German whispers sudoku** but also a **palindromes sudoku**.

Normal sudoku rules apply. Along each green line, adjacent digits must have a difference of 5 or more. Additionally, all green lines are palindromes: the sequence of digits along a line reads the same forwards and backwards.



SudokuPad: <https://sudokupad.app/pon7pig0vm>

September 8, 2024: Wrogn Thermo Sudoku

by Bill Murphy

Walkthrough for Whisperdromes: <https://youtu.be/B9Fh1yWzeAc>

READ THE RULES FOR TODAY

I think a bunch of you have joked about it like we'd never do it but I had to put some mental energy into something this week, so here it is:

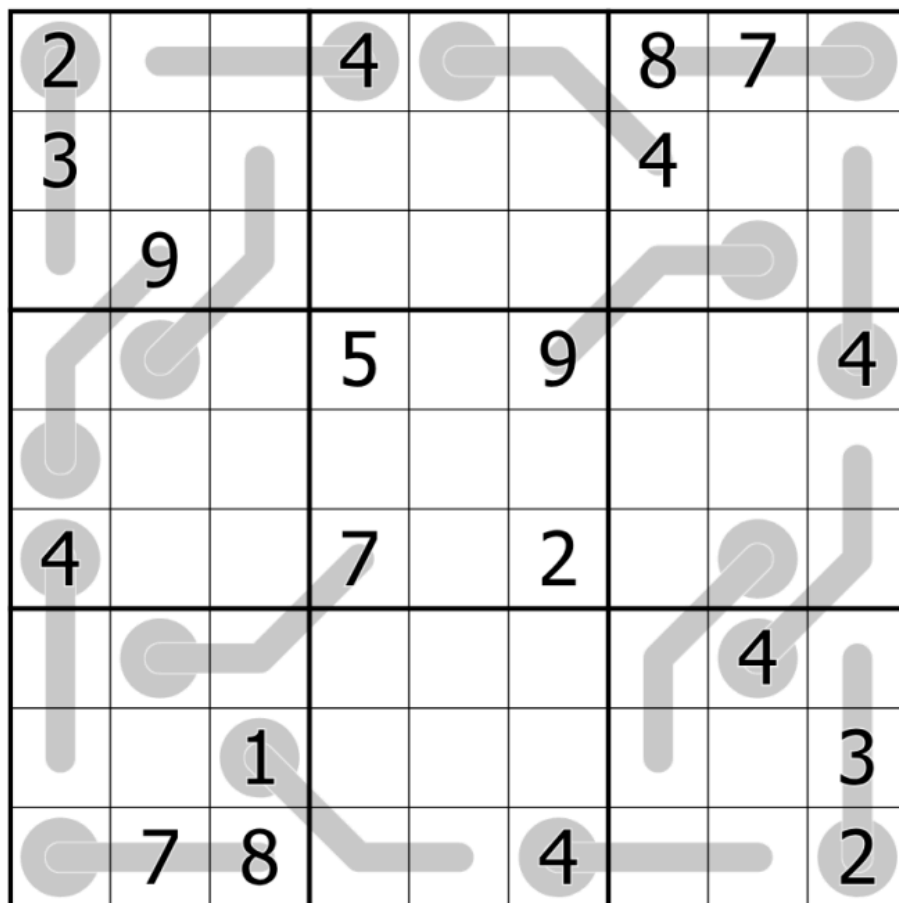
Today's GAS is **Wrogn Thermometer** Sudoku!

Normal Sudoku Rules Apply.

Thermometers: Digits along thermometers must increase from bulb to tip.

*BUT All these thermometers are broken, which means they **MUST NOT** work as intended. Each thermometer must either contain repeated digits and/or not increase from bulb to tip.*

Yep it's a GAS Wrogn puzzle.



<https://sudokupad.app/y5mcply7n2>

September 9, 2024: The Green Lagoon

by Philip Newman

Walkthrough of "Wrogn Thermo Sudoku" by Bill:

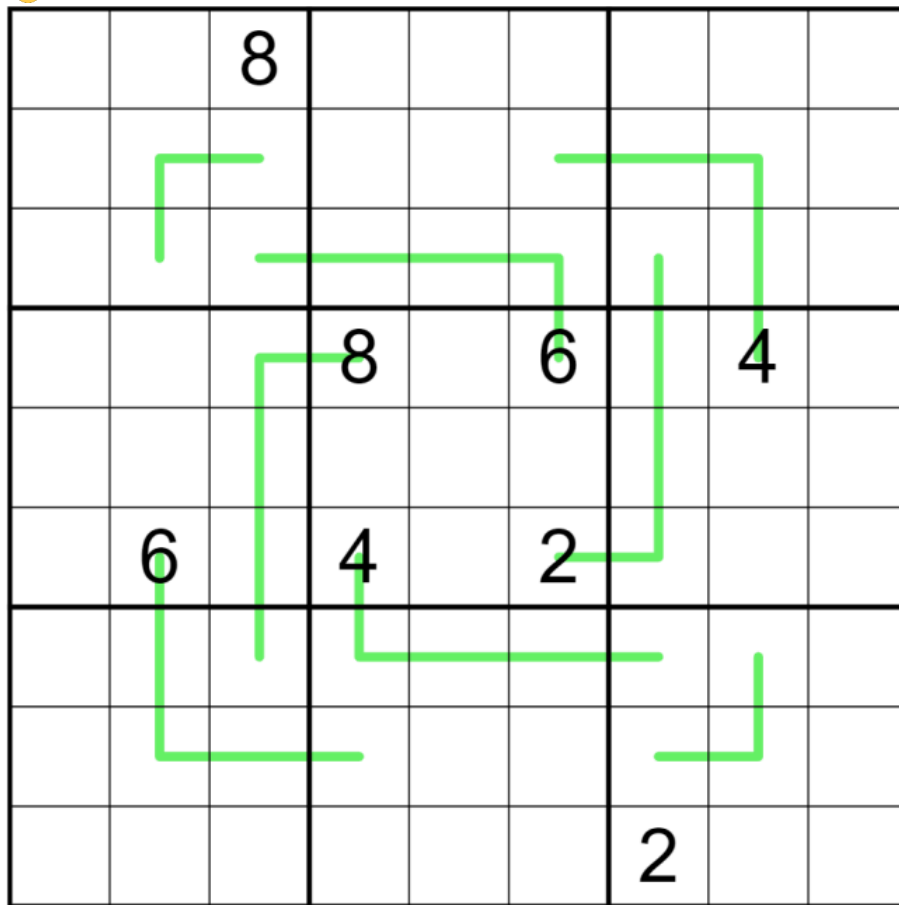
https://youtu.be/14fb_rwHVHU

Uh oh, Philip is on a theme again...

Today's **GAS** is a **German Whispers Sudoku**!

Normal sudoku rules apply.

German Whispers: Digits in cells directly connected by a green line must differ by at least 5.



Play on SudokuPad: <https://sudokupad.app/philip-newman/20240909-the-green-lagoon>

Play on f-puzzles: <https://f-puzzles.com/?id=2dodzxxvh>

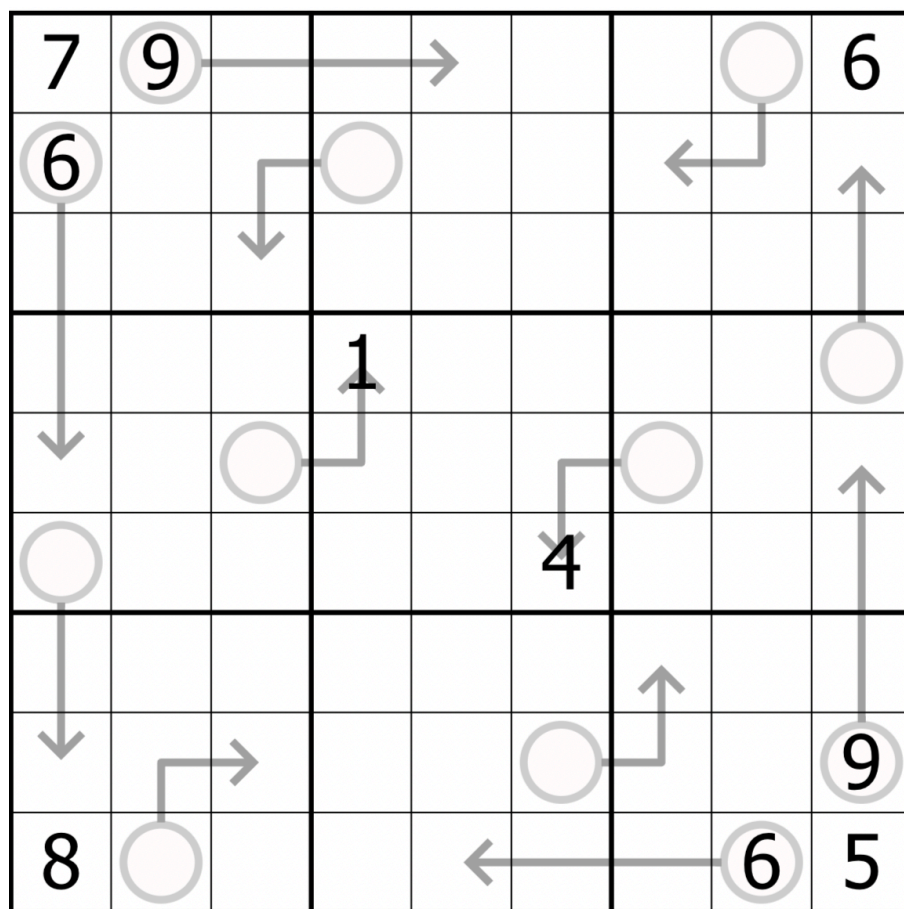
September 10, 2024: Thmarrows
by clover!

Walkthrough for Philip's "Green Lagoon": <https://youtu.be/-9LBp-8ZAK8>

You know what I love? Bike polo. It's like riding bikes, but also playing polo.

Similarly: this puzzle is a thermo sudoku but also an arrow sudoku.

Normal sudoku rules apply. Digits on arrows must sum to the digit in the attached circle. Also, along each arrow, digits must increase, starting at the point of the arrow and going towards the circle.



SudokuPad: <https://sudokupad.app/cdjntodet0>

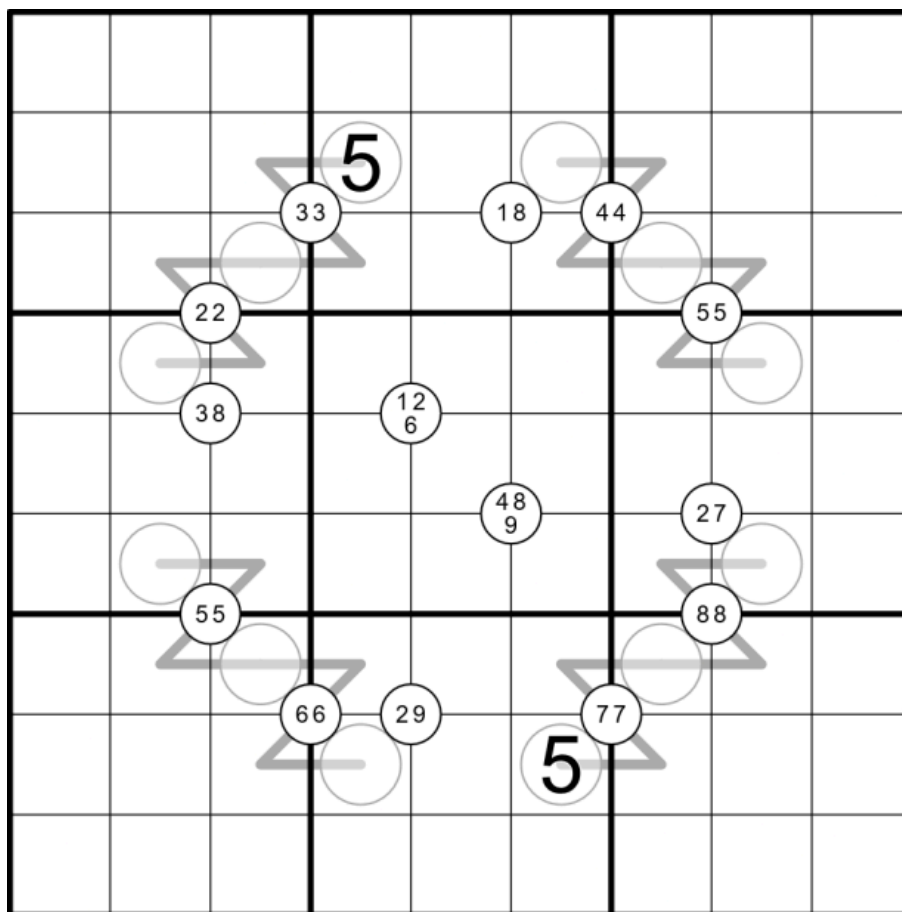
September 11, 2024: Accordion

by Bill Murphy

Walkthrough for Thmarrows: <https://youtu.be/uj53crS-XCY>

So hey, this week I found out I have "moderate to severe sleep apnoea" which I'll be real, explains a significant portion of the last 15 years of my life, but when I say, "I'm putting slightly generous times on today's **Between Quadruples** Sudoku" it's because I made it two months ago and I don't remember what I was thinking. Maybe you'll have better luck.

Normal Sudoku Rules Apply. Digits along a line must be between the digits in the circles at each end. Digits in white circles in the middle of multiple cells must appear in the surrounding four cells.



<https://sudokupad.app/44zrr4p7a1>

September 12, 2024: Fall in Texas

by Philip Newman

Walkthrough of "Accordion" by Bill:

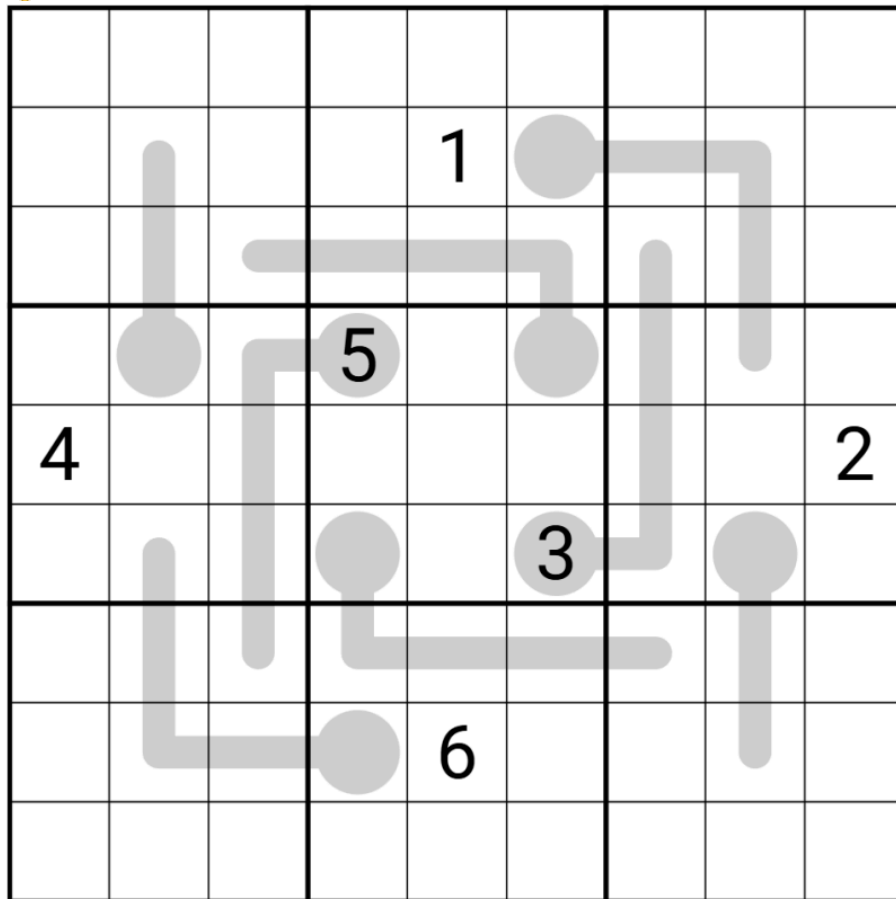
<https://youtu.be/EstzVPLnGq4>

I have a migraine, so I'm going to keep this brief. Anyone have a miracle migraine cure? (Other than not being on the computer working all the time. 🥲)

Today's **GAS** is a **Thermo Sudoku**!

Normal sudoku rules apply.

Thermo: Digits along thermometers must strictly increase from bulb to tip.



Play on SudokuPad: <https://sudokupad.app/philip-newman/20240912-fall-in-texas>

Play on f-puzzles: <https://f-puzzles.com/?id=2xubf8os>

September 13, 2024: Clonextra Regions

by clover!

Walkthrough for Philip's "Fall in Texas": <https://youtu.be/avzsl0Xa5xQ>

You know what I love? Skorts. They're like skirts, but also shorts.

Similarly: this puzzle is an extra regions sudoku but also a clone sudoku.

Normal sudoku rules apply. Also, each shaded region contains each digit from 1 to 9 exactly once each. The digits in the two shaded regions must appear in the same relative positions (for instance, the same digit appears in the top left corner of each region).

				1	2	3	4	
						9	1	
							3	
	5						2	
	8							
	6	1						
	7	5	6	2				

SudokuPad: <https://sudokupad.app/nmb8f4d1kv>

September 14, 2024: Big Goose Energy


by Bill Murphy

Walkthrough for Clonextra Regions: <https://youtu.be/zUXiLx72wos>

So, I mentioned in a comment that work has been paying me to learn Adobe Illustrator so I can teach it to kids and while it wasn't technically part of the course, I discovered that doing both an image trace of yourself AND making use of the pattern function means you can essentially create a repeating texture of yourself. (See today's youtube thumbnail as an example.)

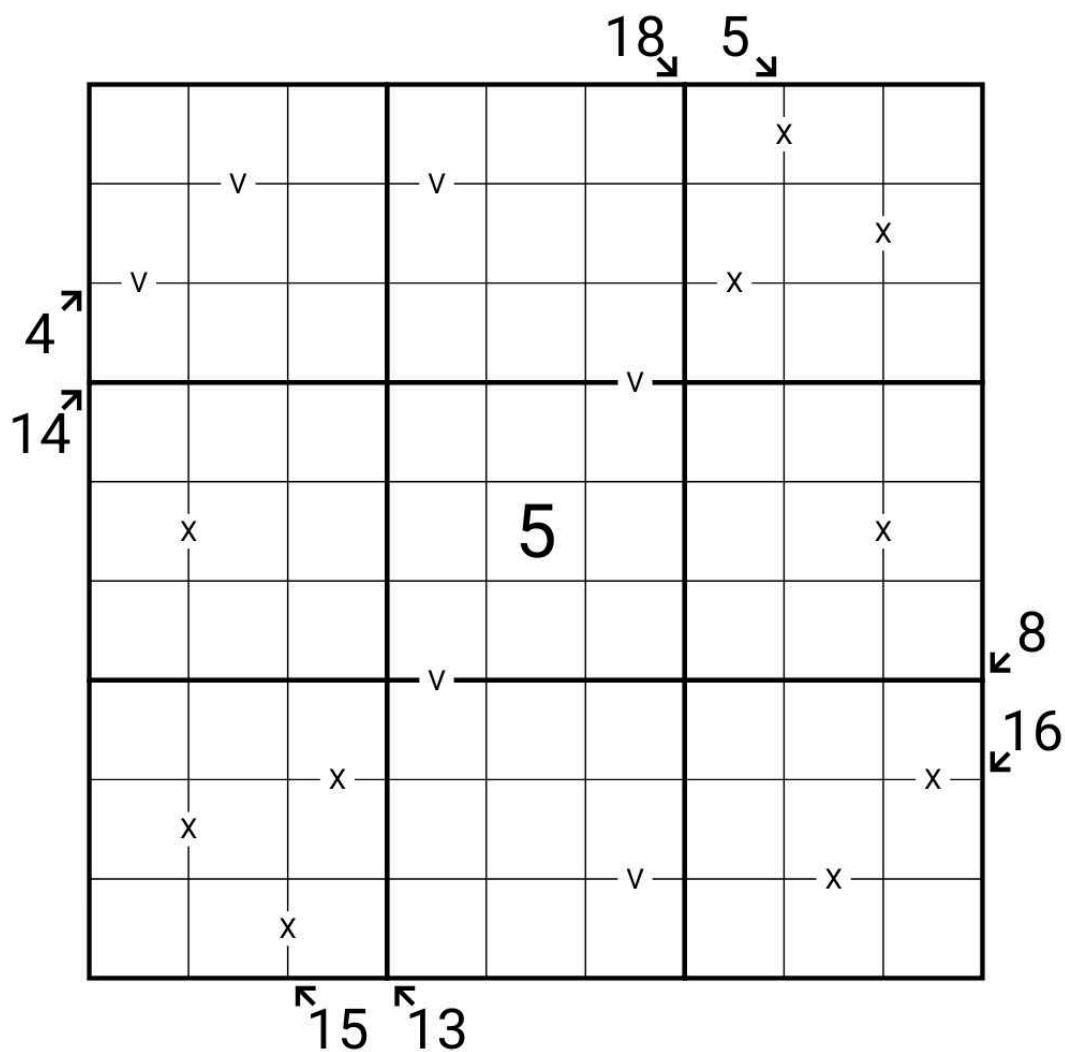
Now, my question for y'all is, is there a non-cursed way to use this? Wrapping paper for gifts seemed OK until I thought "Hey getting thrown away at the end of it seems bad" and then I also thought putting it on a T-Shirt seemed cursed too. So sound off in the comments.

Reason why I'm thinking about gifts is: It's my partner's birthday! I've written this in advance and recorded today's solve in advance because we're doing a lovely dinner tonight. I adore her, love her and can't wait to continue to spend a very long time together with her. Happy birthday my love.

Today's GAS is a **XV Little Killer Sudoku**. The title is a reference to how I always seem to attract the babes 

↓↓ ↓↓ (The puzzle is on the next page) ↓↓ ↓↓

Normal Sudoku Rules Apply. Digits along indicated diagonals must sum to the given total. Digits separated by an X must sum to 10. Digits separated by a V must sum to 5. Not all Xs or Vs are given.



<https://sudokupad.app/b1gwgl3hmq>

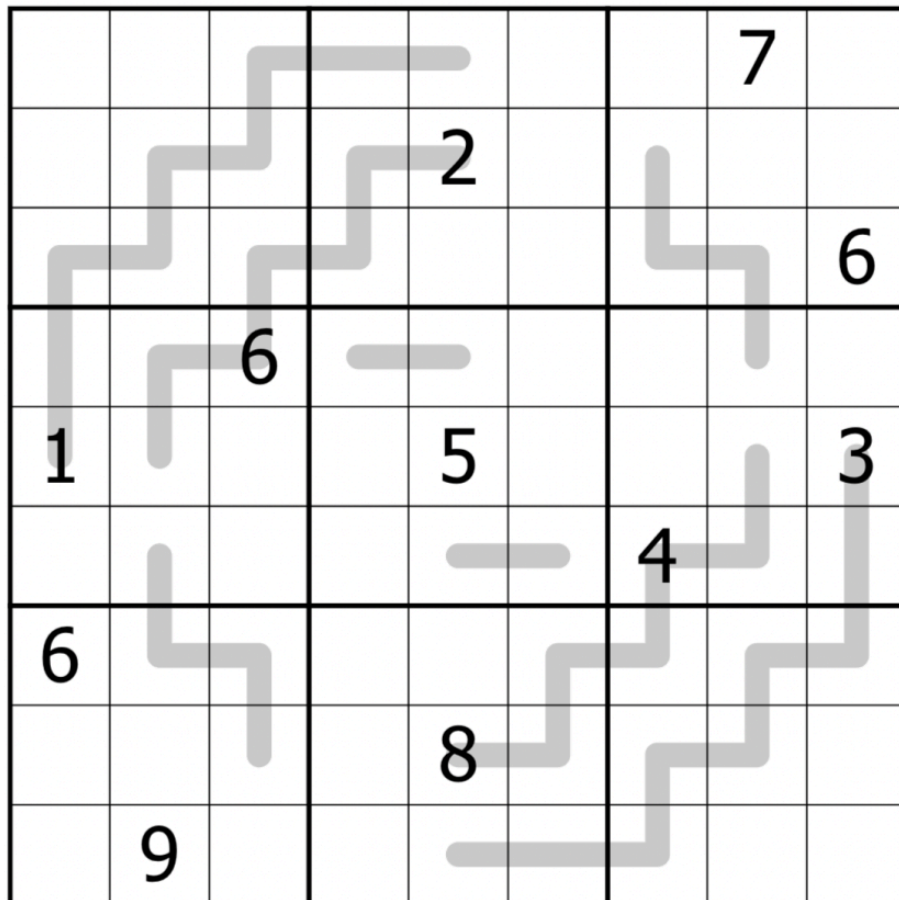
September 15, 2024: Entroparity
by clover!

Walkthrough for Bill's "Big Goose Energy": <https://youtu.be/tQ51sw4QDwQ>

You know what I love? Ligers. They're like lions, but also tigers.

Similarly: this puzzle is a parity lines sudoku, but also an entropic lines sudoku.

Normal sudoku rules apply. Each line contains either all odd digits, or all even digits. Also, along each line, digits alternate high (789) / low (123) / medium (456) in a consistent pattern, such as HLMHLM or MLHMLH.



SudokuPad: <https://sudokupad.app/2xq0az12ee>

September 16, 2024: M0nkey M00n

by Philip Newman

Walkthrough of "Entroparity" by clover:

https://youtu.be/1_BfElzdJfw

My miracle cure for a migraine: watching people play a video game on a giant screen, in an arena full of loud people. (The miracle is that I am functioning at all today.)

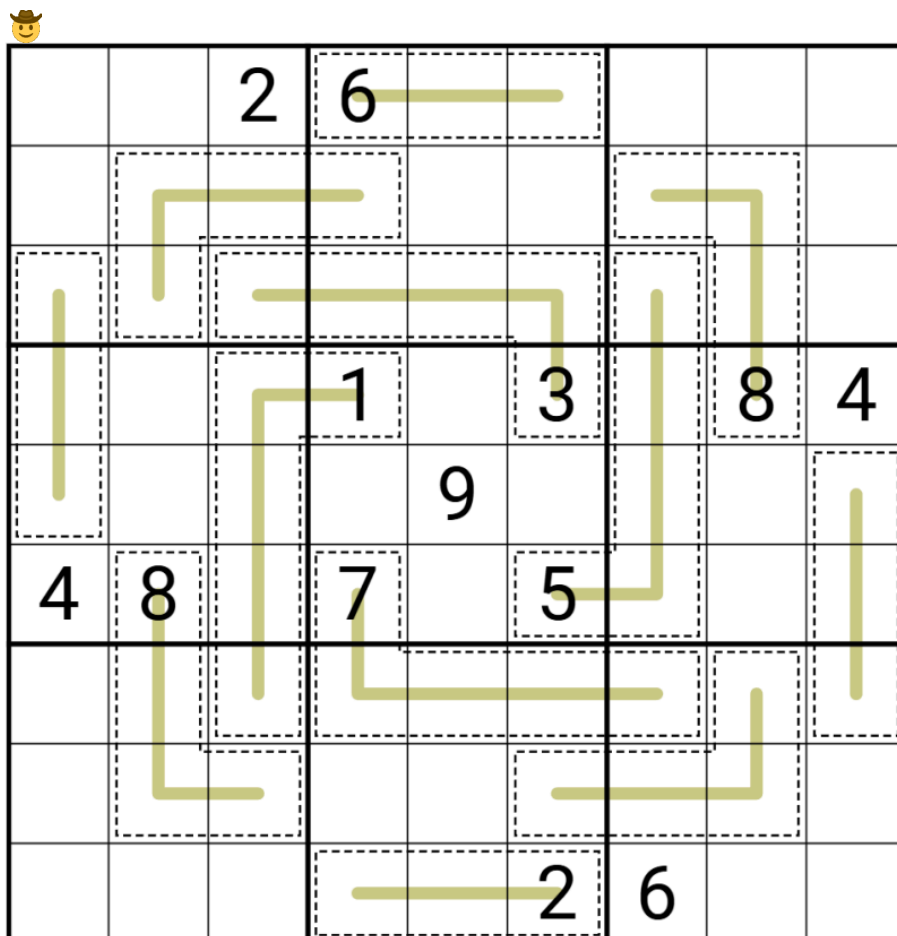
Completely unrelated, this is my new favorite wikipedia article:

https://en.wikipedia.org/wiki/List_of_lists_of_lists

Today's **GAS** is an **Antirenbans Sudoku**!

Normal sudoku rules apply.

Antirenbans: Digits along lines/in cages cannot repeat, and no two digits on a line/in a cage can be consecutive (have a difference of 1), regardless of their positions.



Play on SudokuPad: <https://sudokupad.app/philip-newman/20240916-m0nkey-m00n>

Play on f-puzzles: <https://f-puzzles.com/?id=24rg772l>

September 17, 2024: Bark At The Moon

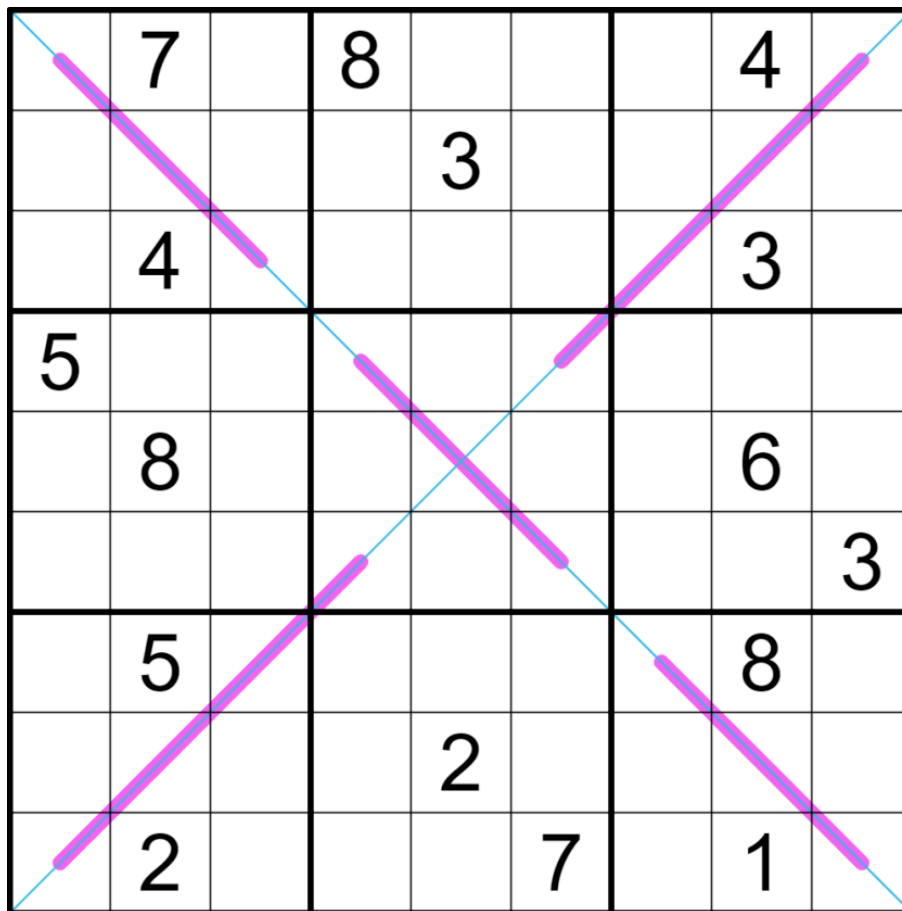
by Bill Murphy

Walkthrough for M0nkey M00n: <https://youtu.be/2PIRqUyyFvY>

I did figure out a good answer for what to do with that pattern thing: Last weekend I met my partner's family and her nephews. Tiny children would go wild if they had their own personalised wrapping paper, I think. Also discovering that the largest you can make a PDF is technically bigger than Greece, feels like a plan.

Today's puzzle is me back on track of figuring out ways to check off pairs of variants we haven't done yet for GAS: it's **Renban Diagonal Sudoku**!!

Normal Sudoku Rules Apply. Digits along each diagonal must not repeat. Digits along each purple line must form a consecutive set of digits but may be in any order.





<https://sudokupad.app/8gasr3rzye>

September 18, 2024: The Spice Must Flow

by Philip Newman

Walkthrough of "Bark At The Moon" by Bill:

<https://youtu.be/-f2QZKNtGg>

 WARNING: Today's puzzle is a bit spicy! 

Today's **GAS** is an **Arrow Sudoku**!

Normal sudoku rules apply.

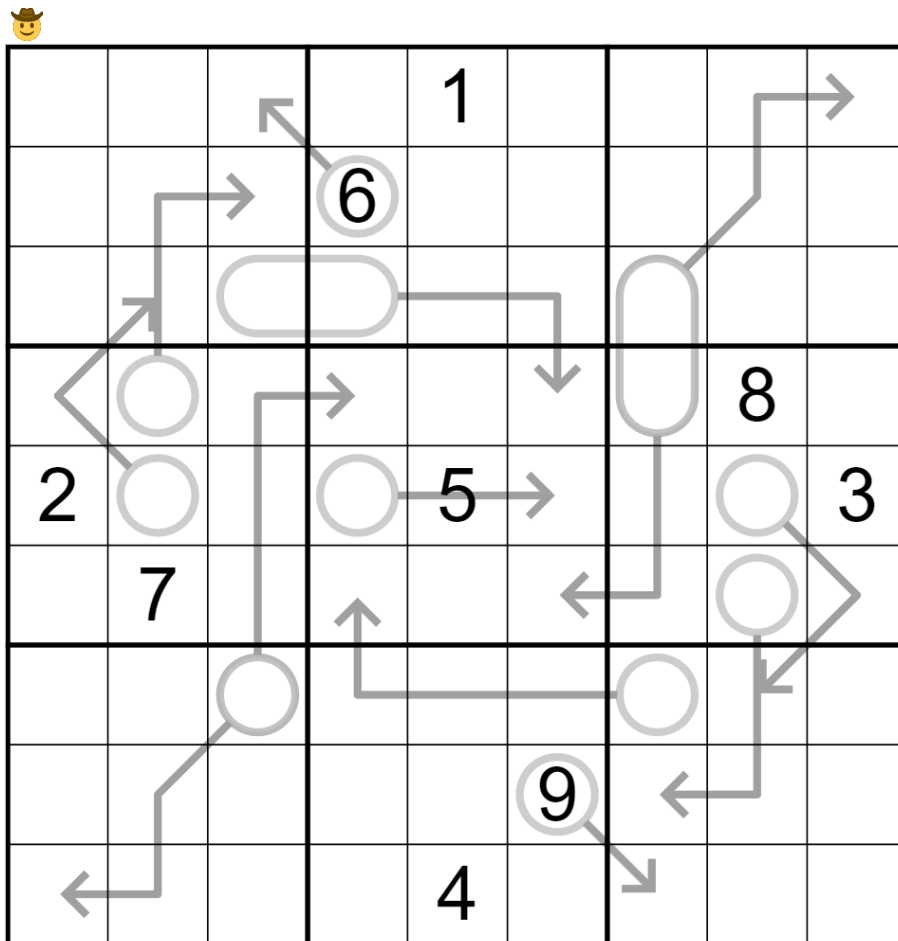
Arrow: Digits along arrows must sum to the total given in the corresponding circle or pill (two-digit sums are read left-to-right or top-to-bottom).

[Note from typesetter: since the regular GAS puzzle was spoiled I put it on the next page, followed by the unspoiled non-GAS spicier version]

↓↓ ↓↓ (The puzzle is on the next page) ↓↓ ↓↓

Normal sudoku rules apply.

Arrow: Digits along arrows must sum to the total given in the corresponding circle or pill (two-digit sums are read left-to-right or top-to-bottom).



🌶️ (spoilered screenshot, more arrows)

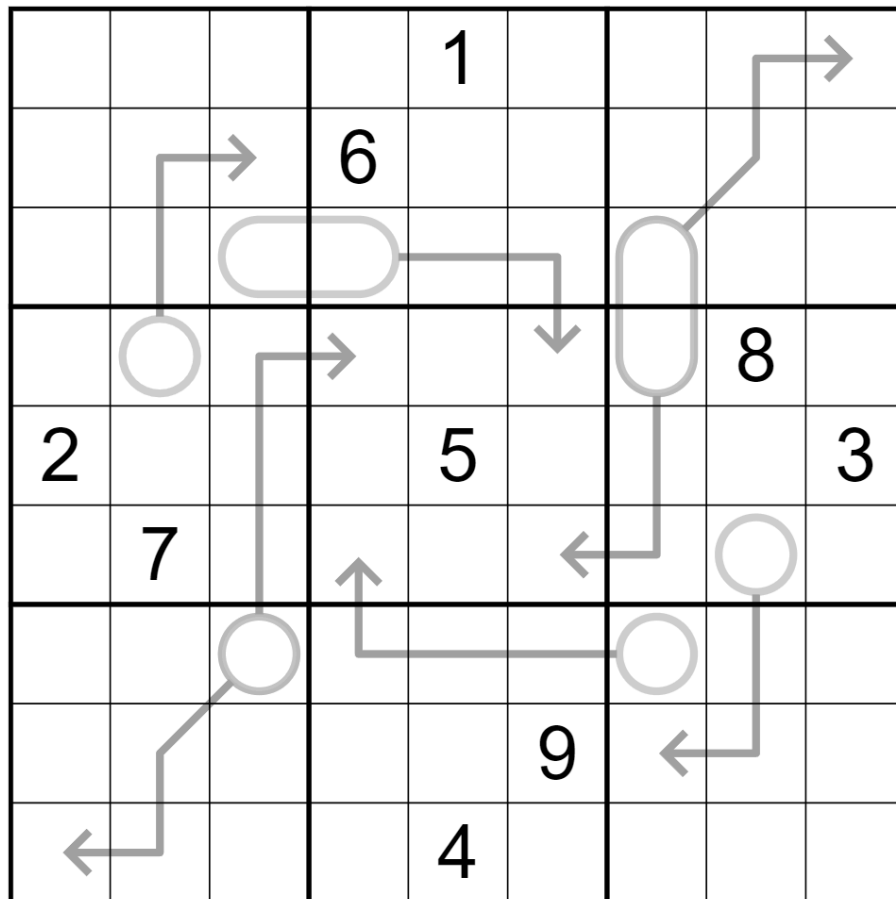
Play on SudokuPad: <https://sudokupad.app/philip-newman/20240918-the-spice-must-flow>

Play on f-puzzles: <https://f-puzzles.com/?id=29br2lzs>

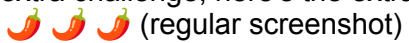
⇓⇓ (The extra-spicy non-GAS version is on the next page) ⇓⇓

Normal sudoku rules apply.

Arrow: Digits along arrows must sum to the total given in the corresponding circle or pill (two-digit sums are read left-to-right or top-to-bottom).



And for those wanting an extra challenge, here's the extra spicy (not GAS) version:



(regular screenshot)

Play on SudokuPad: <https://sudokupad.app/philip-newman/20240918-thai-spicy>

by clover!

Also, check out this upcoming event this Friday night/Saturday, where I'm going to lose my entire mind on camera while solving sudoku: [#event-announcements](#)

		4				9		
			8				2	
7						1		
			3		5			
		5				6		
			4		1			
		2						7
	1				9			
		8				3		

SudokuPad: <https://sudokupad.app/8blilv1wly>

September 20, 2024: Funeral Pyre

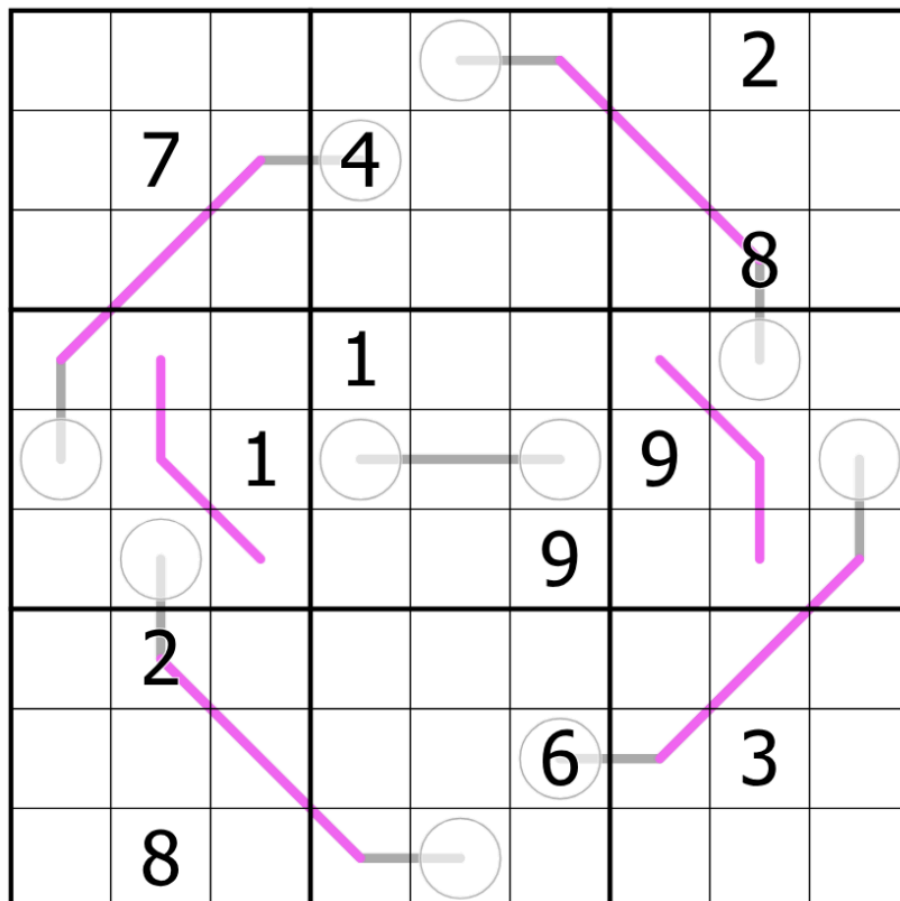
by Bill Murphy

Happy End of Term to my Australian teaching friend homies!
I'm sick and there seems to be no end in sight to this, gosh my GAS backlog is so low.

Here's one from a long, long while back, a **Renban Between Lines** Sudoku!

Normal Sudoku Rules Apply. Digits along purple lines must be a set of consecutive digits but may be in any order. Digits along lines with circles at either end must be numerically between the digits in the circles.

Now when I made this one, we hadn't done a Renban Between Line sudoku, but Clover did one since then: [#daily-sudoku-puzzles](https://www.daily-sudoku-puzzles.com/) [Note from typesetter: July 27, 2024, GAS Leak 42]
(You know what I love? *Stealing Bits*.)



<https://sudokupad.app/t3jm2zcq1s>

September 21, 2024: Lord No Wait Viscount

by Philip Newman

Walkthrough of "Funeral Pyre" by Bill:

<https://youtu.be/WqWUrc5pRWY>

@clover! and @Gliperal are currently solving the Caterdokupillar, check them out at

<https://www.twitch.tv/sudokucon> and donate to get them back above 7 hours left!

Today's **GAS** is a **10-Lines Sudoku**!

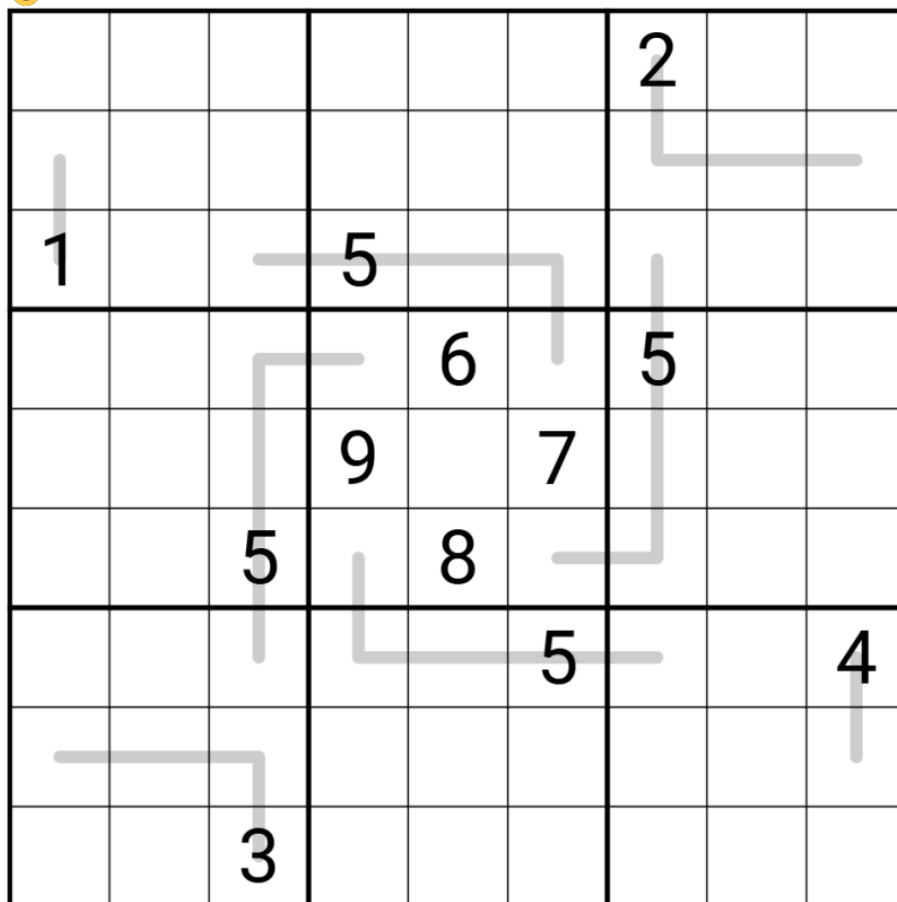
clover did one of these almost two years ago, you can check it out here for a refresher!

[#daily-sudoku-puzzles](#) [Note from typesetter: October 16, 2022, GAS Leak 21]

Normal sudoku rules apply.

10-Lines: Digits along lines must be separated into sequential groups such that each group sums to 10.

For example, a 5-cell 10-line could contain 36182, since $3+6+1 = 8+2 = 10$.



Play on SudokuPad: <https://sudokuapp.philip-newman/20240921-lord-no-wait-viscount>

Play on f-puzzles: <https://f-puzzles.com/?id=27mfeavh>

September 22, 2024: Regimeters

by clover!

Walkthrough will arrive when I haven't completely lost my voice 😊

You know what I like? This stream. <https://www.twitch.tv/videos/2256474691> It depicts the process of earning \$1600 for SudokuCon by solving 118 sudoku in 19 hours, and also the process of slowly losing my sanity alongside one of my best friends. Thanks to everyone who dropped by, you're great 😊

Today's GAS is a **region sum lines** and **thermometers** sudoku! Normal sudoku rules apply. Also, there are some gray lines in the grid. Along each gray line, digits increase from one end to the other (you'll need to figure out which end is high and which is low.) Each gray line passes through multiple regions; the sum of digits on the gray line is the same within each region it passes through. For instance, $r3c2 = r4c1 + r4c2$.

			9		3			
		7				9		
			2		6			
3								
	2						4	
								1
			5		9			
		8				6		
			1		8			

SudokuPad: <https://sudokupad.app/m58vy78qja>

September 23, 2024: All Threes

by Bill Murphy

Walkthrough for Regiometers: <https://youtu.be/X5wGln0y3tM>

Massively proud of @clover! and @Gliper! for their absolutely monstrous efforts yesterday! That's it, forgot to find a joke for today.

Wait:

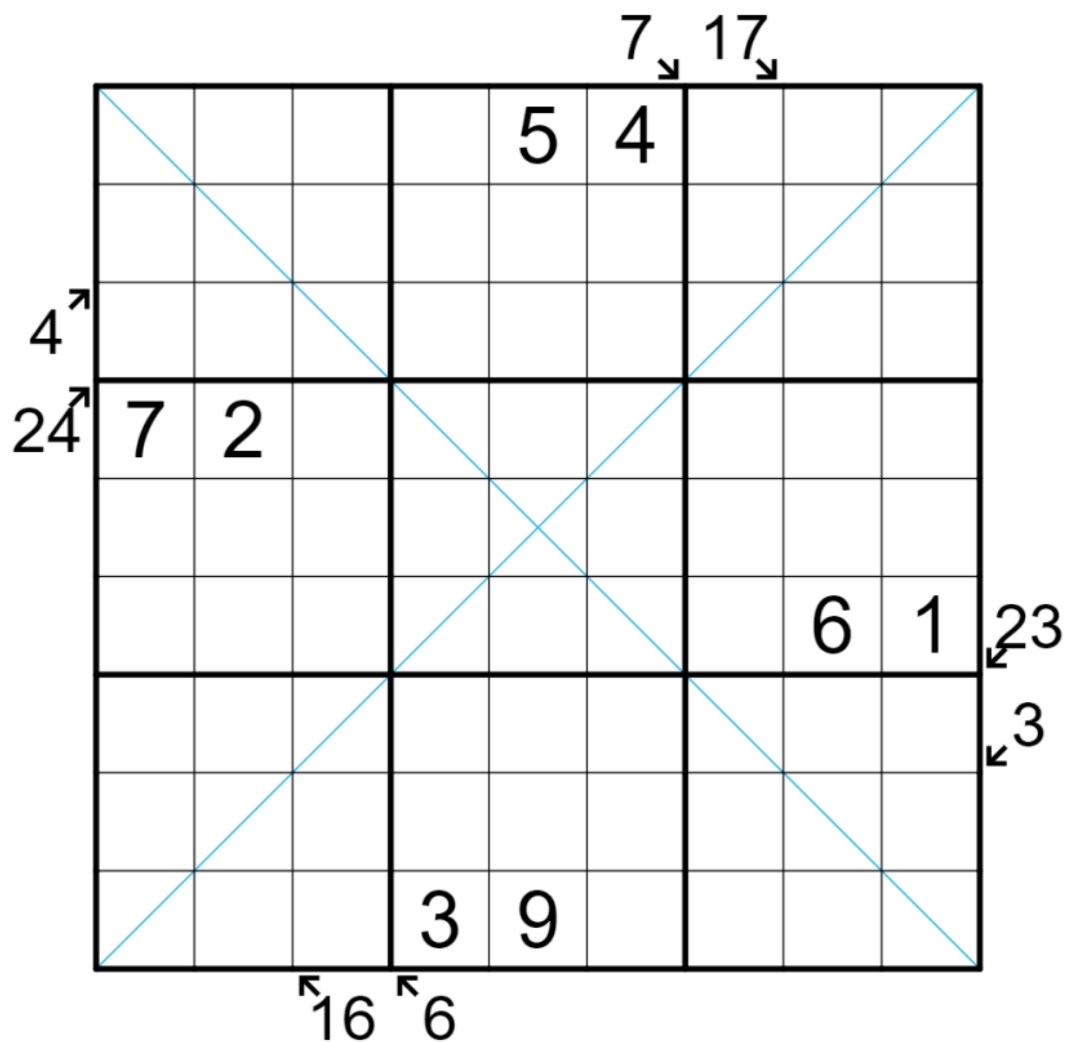
A man orders 2999 apples from a grocer.

The grocer asked, "Why don't you just buy 3000 apples?"

The man replied, "Who the heck is going to eat 3000 apples?!"

Today's GAS is a **Little Killer Diagonal** Sudoku!

Normal Sudoku Rules Apply. Digits must not repeat along indicated diagonals. Digits along diagonals must sum to the given total.



<https://sudokupad.app/2mip7kx36x>

September 24, 2024: If You Ain't Dutch

by Philip Newman

Walkthrough of "All Threes" by Bill:

<https://youtu.be/4T-vw78TyJc>

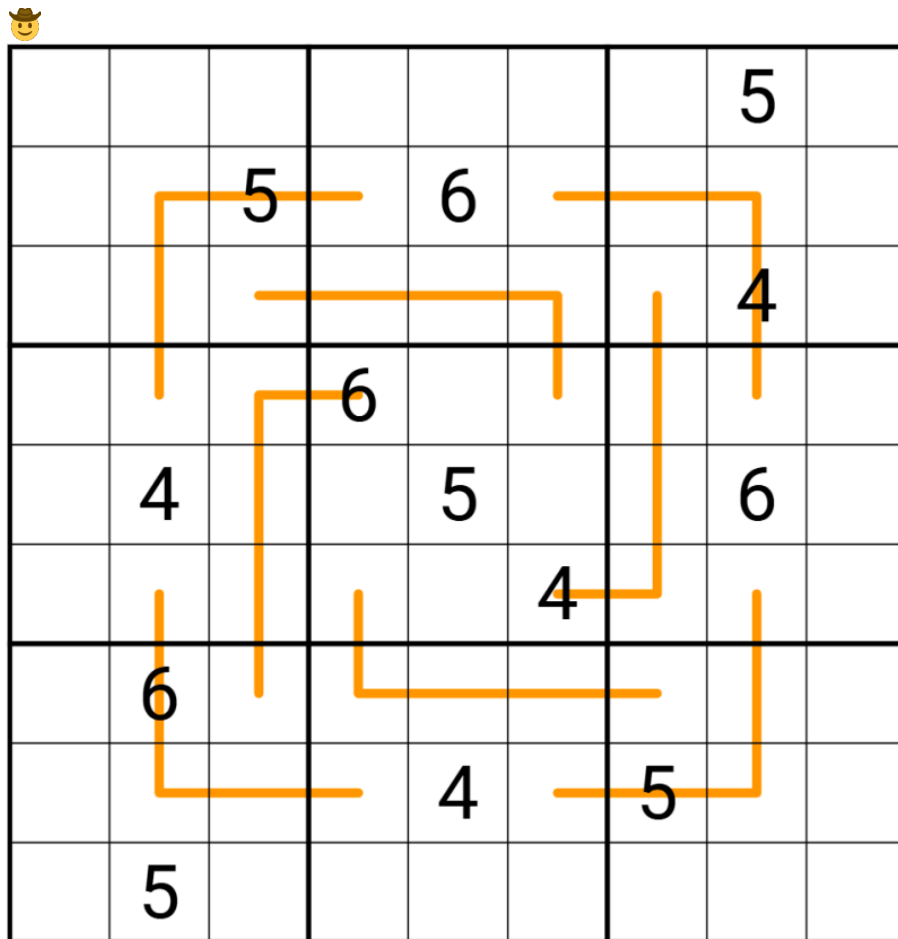
Today's **GAS** is a **Dutch Whispers Sudoku**!

This should go without saying, but it's a Philip Whispers puzzle, it might be a bit long for some.

😊 If you aren't familiar with the rules, take a moment to think about which digits are most restricted before you start solving.

Normal sudoku rules apply.

Dutch Whispers: Digits in cells directly connected by an orange line must differ by at least 4.



Play on SudokuPad: <https://sudokupad.app/philip-newman/20240924-if-you-aint-dutch>

Play on f-puzzles: <https://f-puzzles.com/?id=2xnzaqcr>

September 25, 2024: Remote Sums

by clover!

Walkthrough of "If You Ain't Dutch" by Philip: <https://youtu.be/65BGSdOkvGs>

Today's GAS is a **remote sums sudoku**, a variant I became acquainted with during the recent livestream!

Normal sudoku rules apply. Remote sums: call the digit placed in a cage N. There is another digit, X, that is exactly N steps away in a straight line, so that $N + X$ equals the clue given in the top corner of the cage. For instance, if a cage has the clue "5", and you place a 3 in that cage, there must be a 2 exactly 3 steps away from the cage in a straight line.

	<div>4</div>		<div>5</div>	<div>4</div>	<div>8</div>	6	7	
<div>3</div>		<div>5</div>						
	<div>6</div>	1						
							<div>9</div>	
				7				
	<div>6</div>							
						5	<div>4</div>	
						<div>5</div>		<div>3</div>
	7	8	<div>8</div>	<div>7</div>	<div>8</div>		<div>6</div>	

SudokuPad: <https://sudokupad.app/020lu4d9iu>

September 26, 2024: Right Back To It

by Bill Murphy

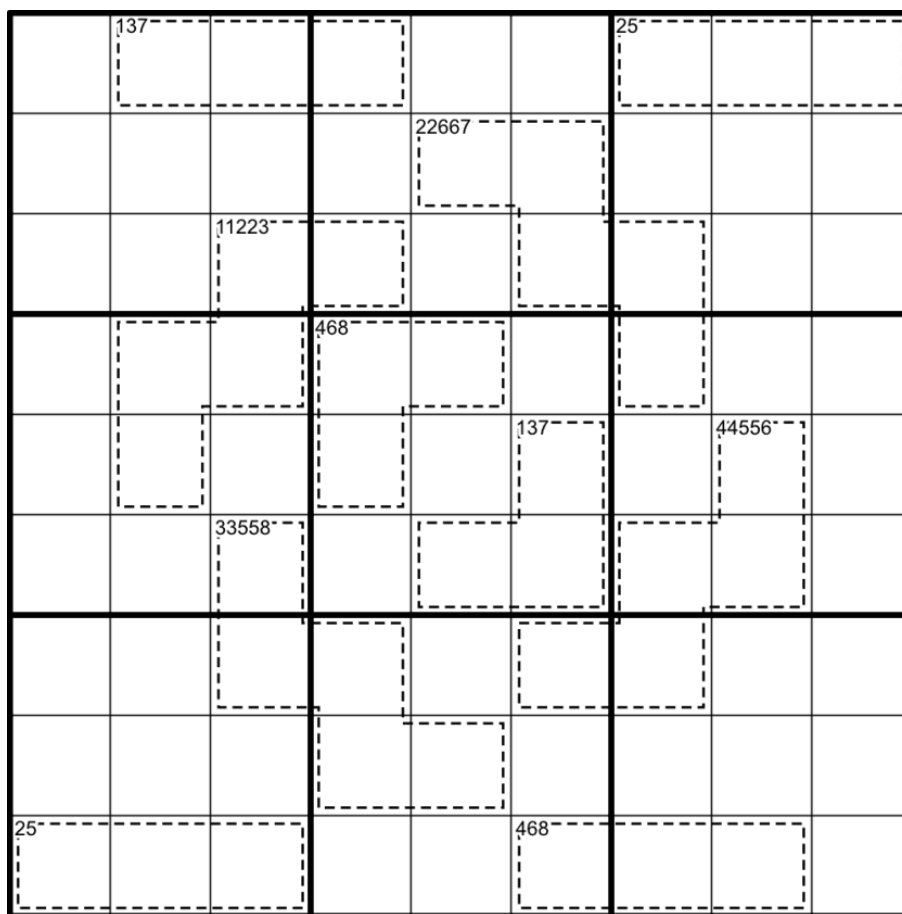
Walkthrough for Remote Pairs: <https://youtu.be/Uc00w3XagBE>

I've slowly learning a new language for the last two weeks! It feels really nice to be both stretching my brain in a new way, but also I've been really enjoying taking the pattern recognition from the experience of puzzles and applying it to a new set of challenges.

Plus, any time I struggle, I just remind myself how much of a nightmare the english language is.

Today's GAS is a **Zone Sudoku**!

Normal Sudoku Rules Apply. Digits in the top left of cages must appear in the cage.



<https://sudokupad.app/qsli4xvkpy>

September 27, 2024: Between Your Ears

by Philip Newman

Walkthrough of "Right Back To It" by Bill:

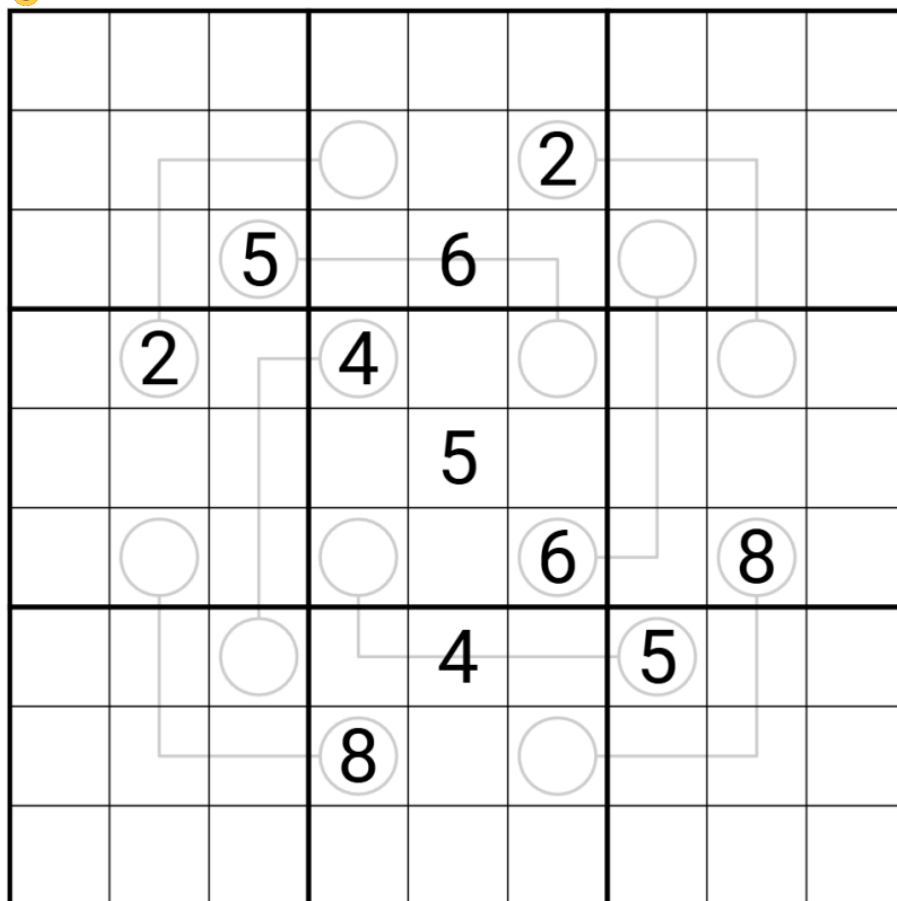
<https://youtu.be/Kr4zo2T7WIs>

Today's **GAS** is a **Between Lines Sudoku**!

Already late today so that's it!

Normal sudoku rules apply.

Between Lines: Digits along a line must have values strictly between the values in the circles on the ends of that line.



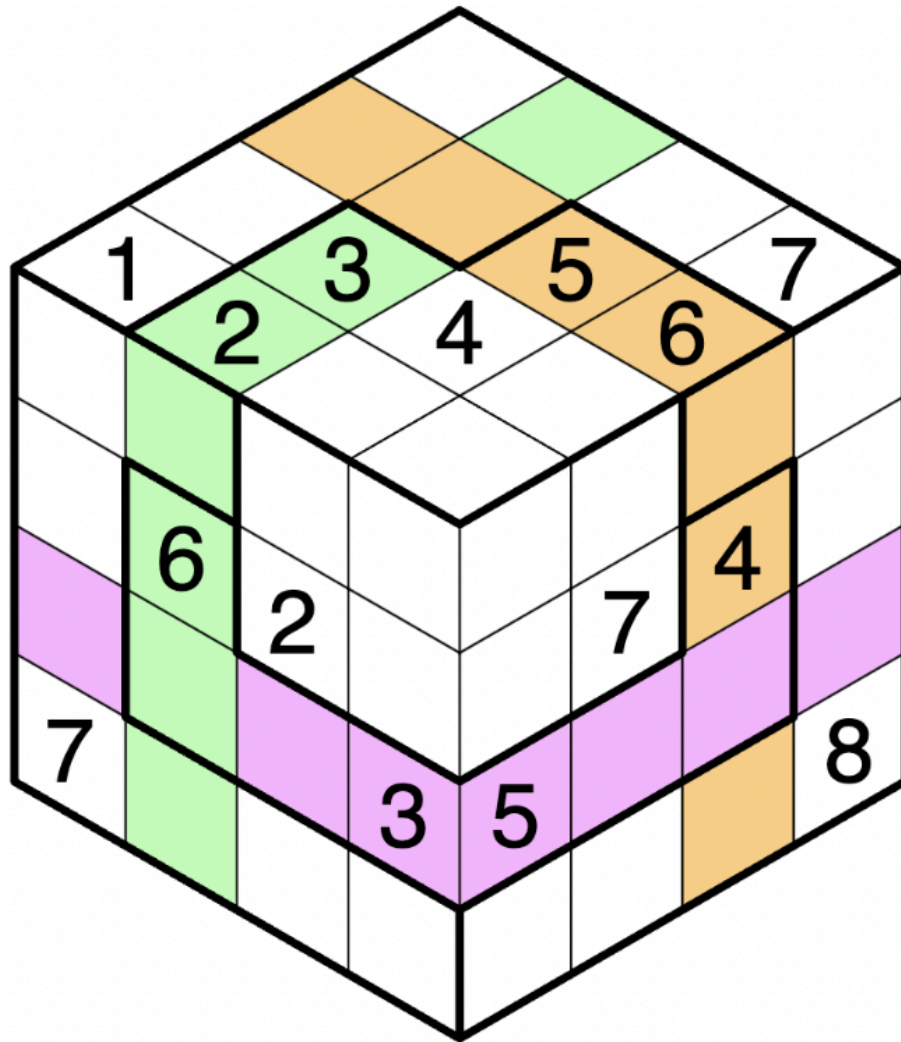
Play on SudokuPad: <https://sudokupad.app/philip-newman/20240927-between-your-ears>

Play on f-puzzles: <https://f-puzzles.com/?id=2y4gu7k6>

September 28, 2024: Isudoku
by clover!

Walkthrough for Philip's "Between Your Ears": <https://youtu.be/7JlwNcpTnsw>

Today's GAS is an **isudoku**! Fill the grid with the digits 1-8 so that each row, column, "other column" (as shown by the colors), and outlined region contains each digit exactly once.



Penpa+: <https://tinyurl.com/23qdr8sb>

September 29, 2024: Out Of Touch

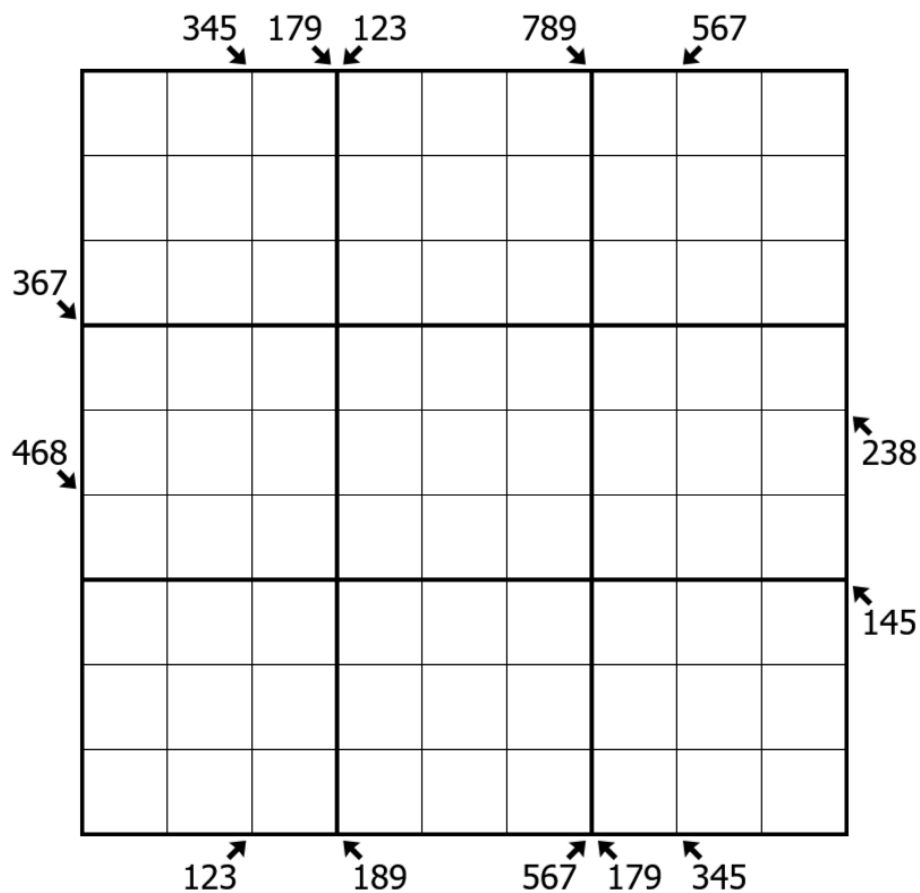
by Bill Murphy

Walkthrough for Isudoku: <https://youtu.be/PJRfKqfT0Bs>

Nothing is more fun to me than taking common variants and (*Eric Andre Voice*) WHAT IF IT WAS DIAGONAL?

Today's GAS is a **Diagonal Outside Sudoku**!

Normal Sudoku Rules Apply. Clues outside the grid give digits that must appear in the first three cells as seen by the clue.



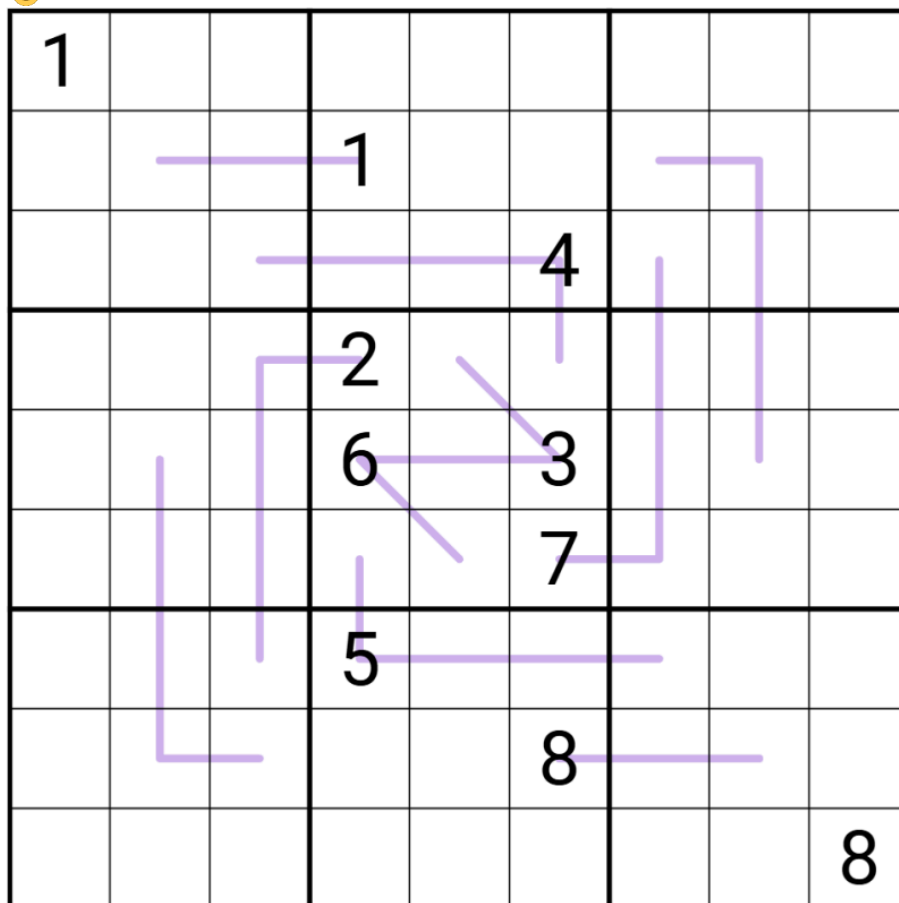
<https://sudokupad.app/gj4h3ush5y>

by Philip Newman

https://youtu.be/Rh_GOxeS95g

Today's **GAS** is a **Zipper Lines Sudoku**!

Zipper Lines: For each line, the digits in each pair of cells an equal distance away from the central cell of the line sum to the digit in the central cell of the line.



Play on f-puzzles: <https://sudokupad.app/4zz4xjzkzv>

Time Benchmarks

	 Two party hats	 One party hat	 Todays dinosaur:
Sep 1, 2024	8:00	15:00	extra Erketu
Sep 2, 2024	8:29	13:45	Ominous Ornitholestes
Sep 3, 2024	6:00	11:00	Field-Goal-Kicking Falcarius
Sep 4, 2024	7:00	13:00	cloned Corythosaurus
Sep 5, 2024	11:00	20:00	Back at it again at the Kryptops Kream
Sep 6, 2024	6:30	13:00	Eudaemonistic Eucnemosaurus
Sep 7, 2024	7:30	14:00	whispering Willinakaqe
Sep 8, 2024	8:00	15:00	Wrogn Wulagasaurus
Sep 9, 2024	7:00	16:21	Swirly Somphospondyl
Sep 10, 2024	5:54 ¹	11:30	miniature Microceratops
Sep 11, 2024	8:30	16:00	Honk Shuvuuia
Sep 12, 2024	7:00	13:00	Dizzy Drusilasaura
Sep 13, 2024	6:30	12:00	cloned Claosaurus
Sep 14, 2024	7:00	13:00	Thoughtful Tsaagan
Sep 15, 2024	8:30	16:00	silly Scelidosaurus
Sep 16, 2024	9:00	20:00	Overp0wering Opisth0c0elicaudiine ²
Sep 17, 2024	6:30	12:00	Replicated Rinchenia
Sep 18, 2024	9:00	20:00	Extra Euhelopodine ³
Sep 19, 2024	6:00	11:00	busted Bothriospondylus
Sep 20, 2024	7:00	13:00	Hyperventilating Hypacrosaurus
Sep 21, 2024	7:12	14:23	Gaudy Gyposaurus
Sep 22, 2024	7:30	14:00	regional Richardoestesia
Sep 23, 2024	7:00	13:00	Granny Siamotyrannus
Sep 24, 2024	8:00	16:00	Xenodochial Xixiposaurus
Sep 25, 2024	7:30	14:00	remote Regaliceratops
Sep 26, 2024	7:00	13:00	Multilingual Mussaurus
Sep 27, 2024	7:30	15:00	Blinking Blikanasaurid
Sep 28, 2024	7:00	13:00	isosceles Isanosaurus
Sep 29, 2024	6:45	12:30	Diagonal Dysalotosaurus
Sep 30, 2024	8:00	15:00	Timely Titanosaurid

¹ (if this is too fast, message @Gliperal , he tested it)

² (I guarantee I would accidentally reuse Opisthocoelicaudiine if I didn't add this parenthetical.)

³ (Google thought I meant Ephedrine)

