

GAS Leak

Genuinely Approachable Sudoku from the CtC Discord

Volume 22:

November 2022



GAS has officially made it past the 500-day mark! (And the 500-day Mark Goodliffe, as he's now published videos for every GAS puzzle up to the end of October and is rapidly approaching his thousandth hat). We've now given out more than 30,000 dinosaurs and 100,000 hats. I'm glad to see them all go to good homes! In this month's edition of GAS Leak, you'll find all of the puzzles from November 2022. This month ended with a funky "four-leaf clover" theme that inspired a number of other setters - here are a few puzzles you might want to check out once you're done with the leak (thank you to solver TopAutism for compiling these).

Non repeating prime sums (Totox00)

<https://discord.com/channels/709370620642852885/727980232220606564/1046912687772278894>

Shift line (Emphyrio)

<https://discord.com/channels/709370620642852885/747501485918650368/1046920650876534917>

Thermo (PulverizingPancake)

<https://discord.com/channels/709370620642852885/747501485918650368/1046832164903333948>

Lockout lines (Amberdot)

<https://discord.com/channels/709370620642852885/747501485918650368/1046810134443204729>

Six leaves (TopAutism)

<https://discord.com/channels/709370620642852885/747501485918650368/1046760955826155520>

Odd Even palindromes (Infinity [209 🎩, 327 🐱, 14 🐸])

<https://discord.com/channels/709370620642852885/747501485918650368/1046759726769246240>

Three leaf renban (Neofelis)

<https://discord.com/channels/709370620642852885/747501485918650368/1046750484951740456>

Renban Whisper Regionsum (TopAutism)

<https://discord.com/channels/709370620642852885/747501485918650368/1046717614342275092>

Palindrome (rockratzero)

<https://discord.com/channels/709370620642852885/747501485918650368/1046694596366831666>

Region sum (TopAutism)

<https://discord.com/channels/709370620642852885/747501485918650368/1046475036267126854>

And of course, there are the five bonus puzzles you've come to expect - you'll find those on the last few pages of this document. Target times and dinosaur names appear on the final page. Happy solving!

Clover

November 1, 2022: Fireworks

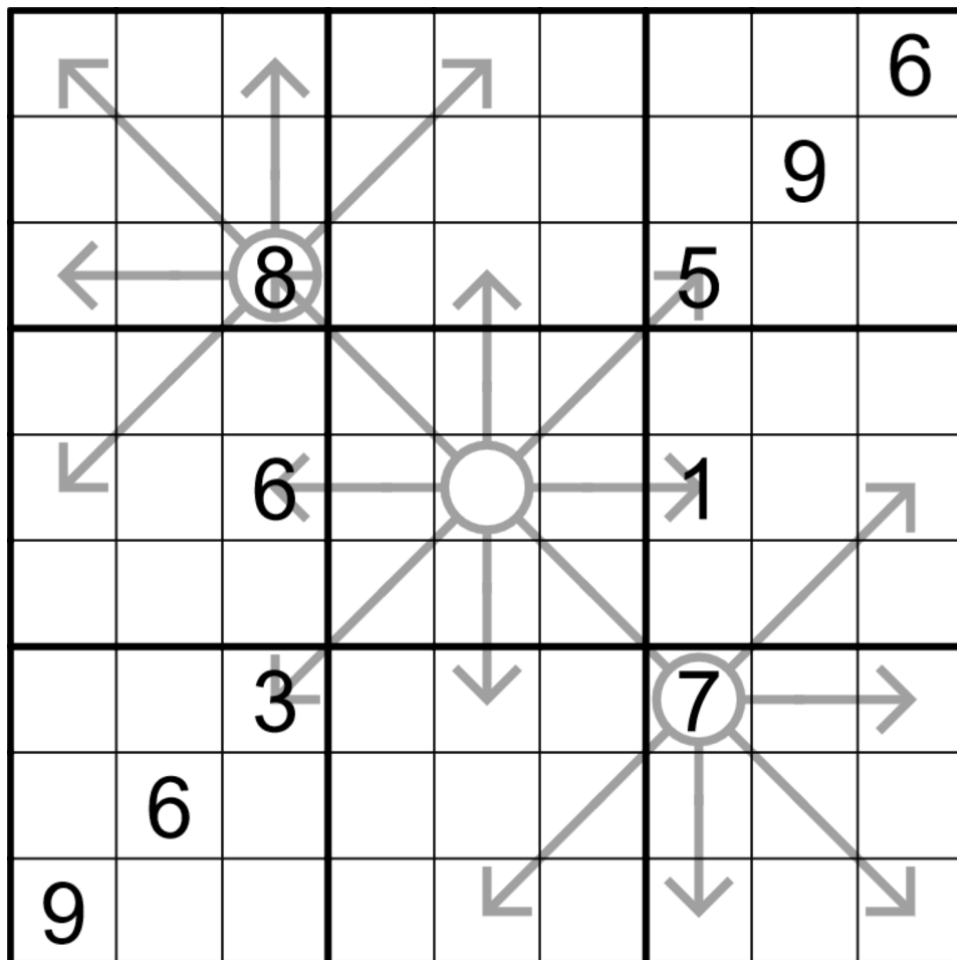
Bill Murphy

G'Day Class, I'm your substitute teacher for today, Mr. Murphy. Your teacher, Mr. Newman isn't here today but I do believe he'll be back tomorrow. He's left instructions for me to continue with your arrow sudoku unit from last week. You do remember what you were doing right? Can I get **[Daily Sudoku Solver]** to fill me in on what y'all did last week?

*Excuse me, **[Daily Sudoku Solver]**. Why aren't you wearing any pants?*

Editor's note: This one came with a hidden message from Bill: *everyone was posting gently spooky stuff so I decided to go full spooky, I didn't want to miss out*

Normal sudoku rules apply. Digits along arrows must sum to the digit in the bulb.



f-puzzles: <https://f-puzzles.com/?id=2yv6ne8>

CTC: <https://tinyurl.com/4a2hmmsx>

November 2, 2022: Classic Sudoku

jovi_al

Howdy howdy, it's jovi_al, back again because I forgot my wallet last time GAS team had me over. Because I never leave my house anymore, I didn't notice until just now...

Regardless, here are some fun facts about today's Genuinely Approachable Classic Sudoku!

1) There are 21 givens in this puzzle!

2) Three distinct digits are given only once!

3) GAS team (and later shye's DMs, after I felt bad spamming everyone) saw me go through a ridiculous number of iterations for this puzzle, until I found one with a solve path and

✨Pencilmark Ergonomics™ ✨ that I felt was good enough.

Rules: Place a digit from 1-9 into each cell such that no digits repeat in rows, columns, or thickly outlined 3x3 regions.

8								9
			4	3	5			
					6			
	7	3					5	
	5			8			6	
	6					7	4	
			2					
			3	5	4			
1								8

f-puzzles: <https://f-puzzles.com/?id=22recwc3>

CtC: <https://tinyurl.com/6jsj8dbv>

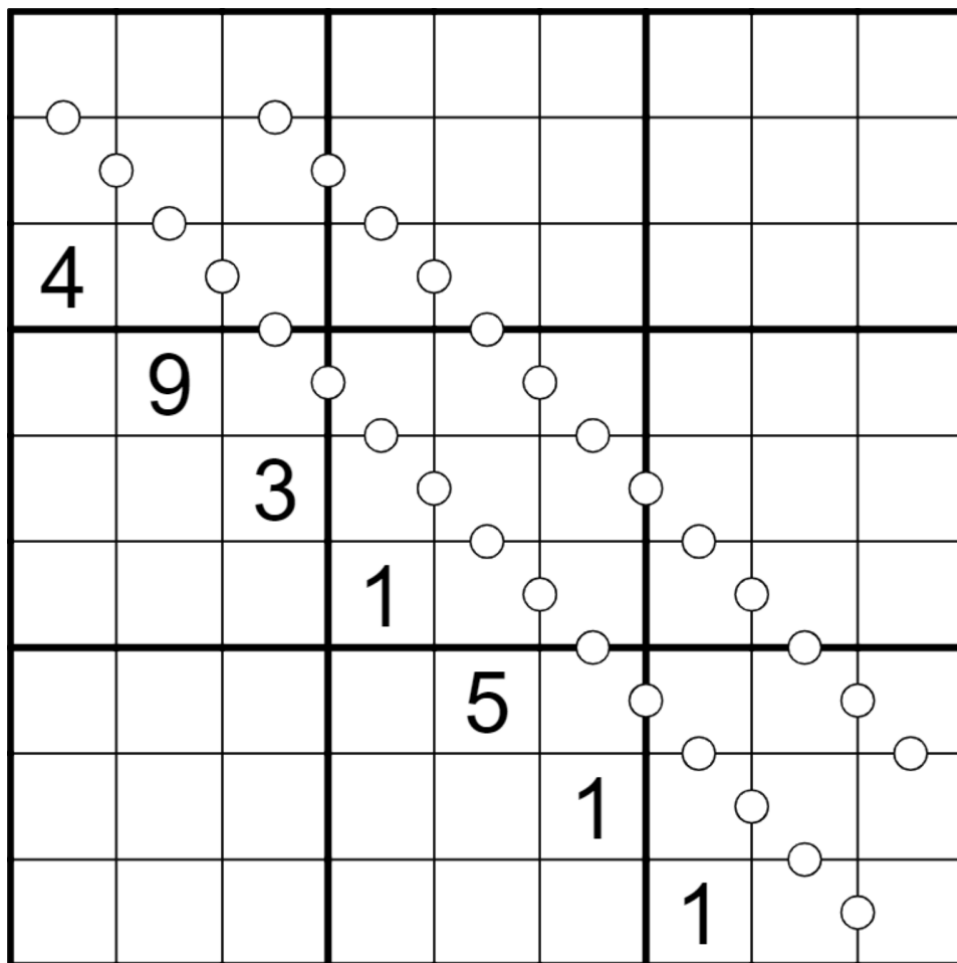
November 3, 2022: The Thin White Lines

Philip Newman

Some of you may have wondered why jovi posted yesterday. Hopefully there was wild speculation about my absence. In fact, it had nothing to do with me at all, we were just adjusting the schedule a bit for Calendar Ergonomics (TM).

Today's GAS is a Consecutive Pairs Sudoku! Normal sudoku rules apply. Digits in cells separated by a white dot must be consecutive (have a difference of 1). (No negative constraint - other adjacent pairs of digits may be consecutive.)

GAS 101 Hint: Pretend this is a clover puzzle and start in the top left! The longer diagonal has runs of 5 cells connected by dots within a single box (boxes 159) - figuring out what those digits can be is a good way to make progress...



Play on f-puzzles: <https://f-puzzles.com/?id=25km8gp6>

Play on CTC App: <https://tinyurl.com/47atyp7x>

November 4, 2022: Antiknight

Clover

We've been suffering a serious antiknight sudoku drought here in GAS, with the last (9x9) puzzle of this type having shown up over a year ago on July 3, 2021. This could have something to do with the fact that I'm really awful at antiknight, although Philip and Bill have no such excuses!

Normal sudoku rules apply. Also, identical digits never appear a knight's move (as in chess) away from each other.

1		2				6		7
			4		5			
3								8
			2		3			
			1		8			
4								5
			7		2			
5		6				8		9

f-puzzles: <https://f-puzzles.com/?id=273eq45b>

CtC: <https://tinyurl.com/nuvdybf>

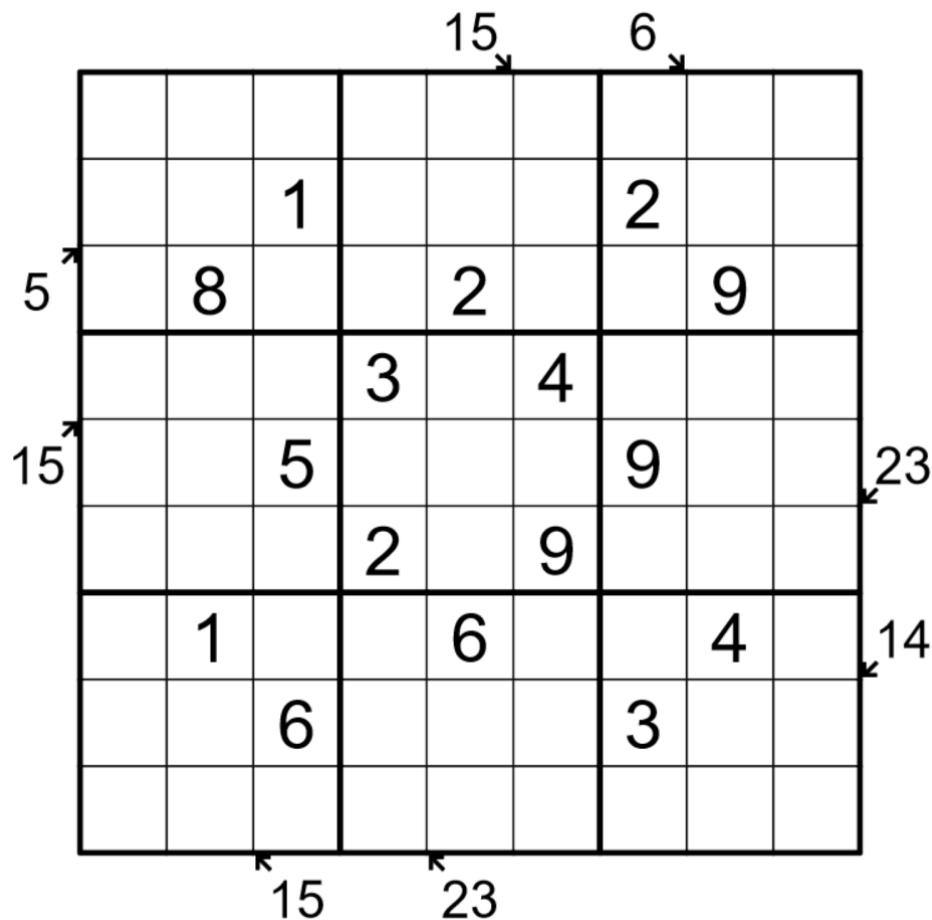
November 5, 2022: Gary Ashby

Bill Murphy

G'Day Reptile Fans, today's Puzzle is named after the song by the band Dry Cleaning, a tortoise by the name of Gary Ashby, who was apparently a Little Killer with a tin-foil soccer ball.

Now, I love Little Killer puzzles like Phillip loves German Whispers and Clover loves Killer Sudoku, but I do acknowledge that I might have to work y'all up to some slightly trickier LK stuff, so consider this an entrée before we get to the good stuff over the long haul. (Not immediately, I've got other things to do.)

Normal Sudoku Rules Apply. Digits along indicated diagonals must sum to the given total.



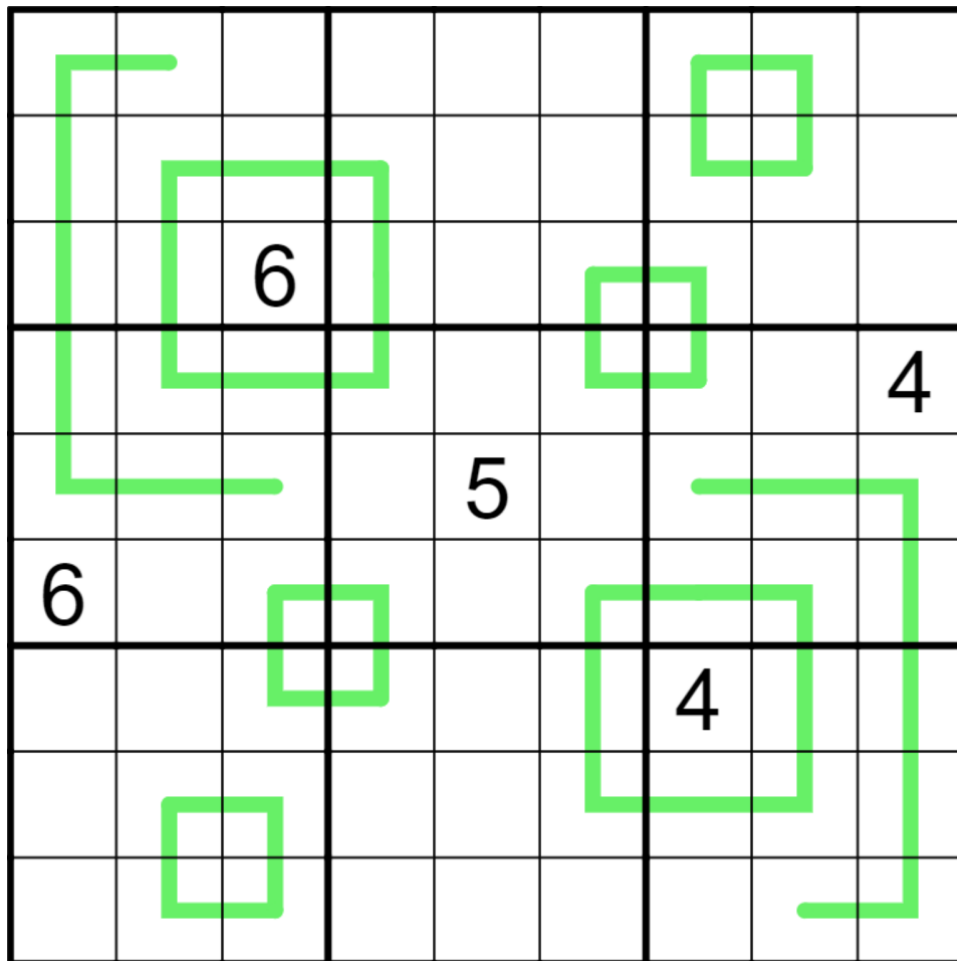
f-puzzles: <https://f-puzzles.com/?id=2cjq4tdv>

CTC: <https://tinyurl.com/323m669w>

Philip Newman

Today's GAS is a German Whispers Sudoku! (That's right, all it takes is someone saying "Philip" and "German Whispers" in the same sentence, and a GAS German Whispers is summoned.)

GAS 101 Hint: Remember that 5 can never go on a whispers line, and that 4/6 can never go between two different numbers on a line. With that in mind, where do 4/6 go in boxes 1 and 9?



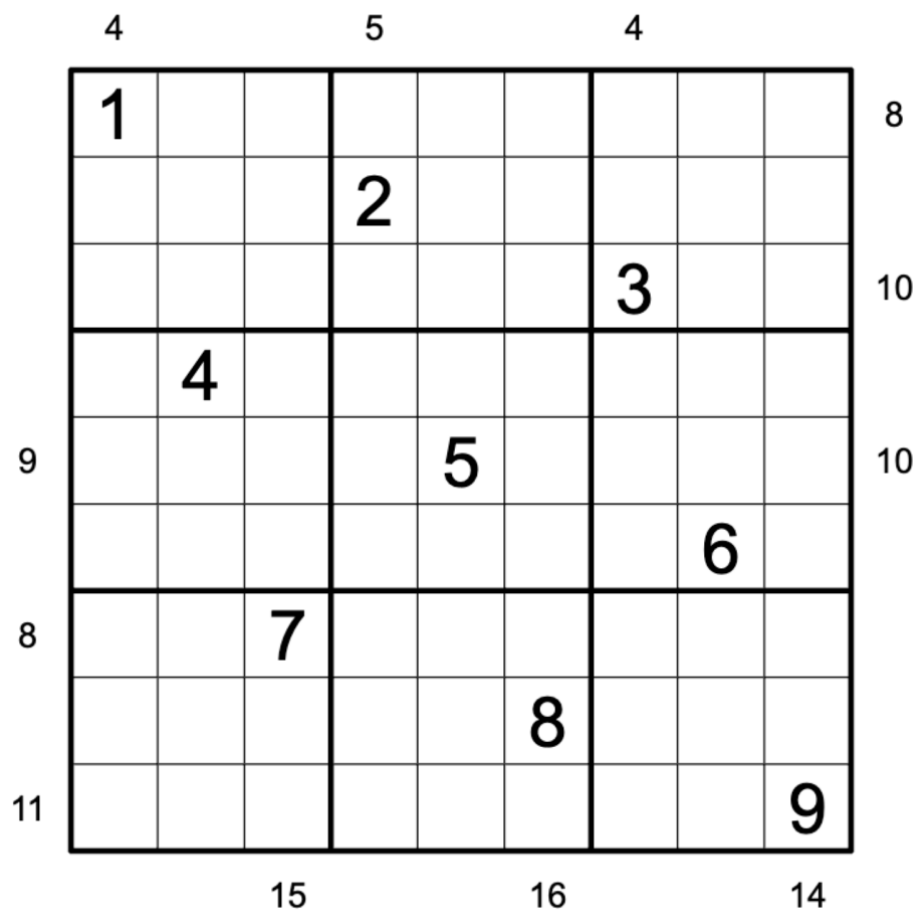
Play on CTC App: <https://tinyurl.com/yksw2zke>

November 7, 2022: Minimax

Clover

Today's GAS is a minimax sudoku. Mind you don't get it ~~maxed~~ mixed up with maximin sudoku, which is a completely distinct variant that you definitely won't be seeing here in a few days.

Normal sudoku rules apply. Clues outside of the grid give the sum of the largest and smallest of the three digits nearest the clue in that row or column. For instance, the sum of the largest and smallest digits in the rightmost three cells of row 5 is 10.



f-puzzles: <https://f-puzzles.com/?id=2xwva23o>

CtC: <https://tinyurl.com/4jb85f9f>

November 8, 2022: (untitled)

Bill Murphy

G'Day Classic Fans,

Today is a Classic Sudoku from me!

grits teeth

I love being outside my comfort zone

clenches fist

It is good for my growth as a human being

Today's puzzle is untitled, not because I'm stealing a bit but most classics just look like inkblots to me! You tell me what it looks like when you post your results!

Place the digits 1 to 9 in each box, row and column.

3	2	1				6	5	4
4								3
5								2
		6	3		7	1		
		7		1		8		
				6				
	5			7			4	
	8		1	3	5		6	
				9				

f-puzzles: <https://f-puzzles.com/?id=29nxkyd4>

CTC: <https://tinyurl.com/4um2z62h>

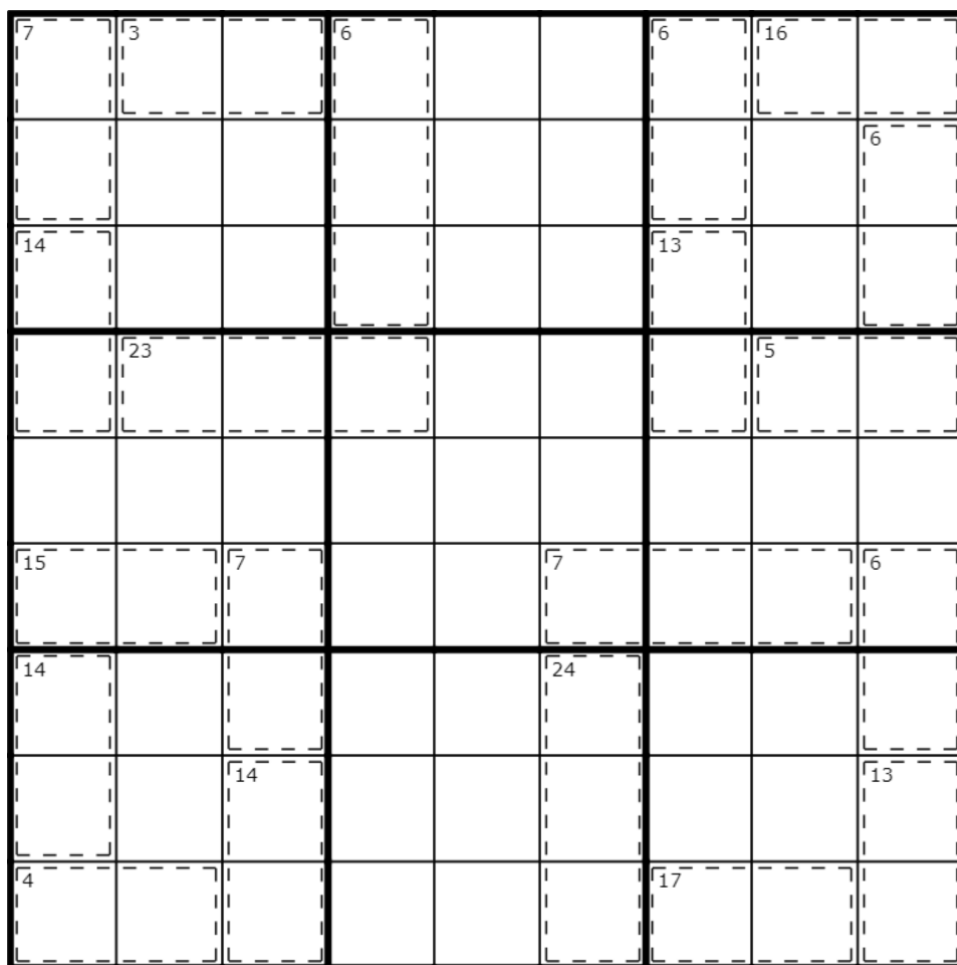
November 9, 2022: Cage Against the Machine

Philip Newman

Bill's sudoku yesterday was clearly an image of the Liberty Bell, representing his liberation from the shackles of variant sudoku.

Today's GAS represents the shackles of variant sudoku fighting back. That's right, it's a Killer Sudoku!

Normal sudoku rules apply. Digits in cages cannot repeat and must sum to the total given.



Play on f-puzzles: <https://f-puzzles.com/?id=28rowyxa>

Play on CTC App: <https://tinyurl.com/wmfrfp8m>

Clover

Normal sudoku rules apply.

Possible ways to fill those cells include 1/4/6 (the difference of 1 and 6 is 5), 7/2/3 (the difference of 7 and 2 is 5), or 4/9/7 (the difference of 4 and 9 is 5).

f-puzzles: <https://f-puzzles.com/?id=256onkxo>
CtC: <https://tinyurl.com/mr2b534c>

November 11, 2022: X

Bill Murphy

G'Day Coffee Fans,

I really enjoy writing these GAS introductions. It's a weird, mutated form of journaling that allows me to either sit with my thoughts and try and construct them into something meaningful or make a joke funny for a change. It's a calm moment in a hectic world.

Speaking of hectic, today's puzzle is an Irregular Sudoku, which I made on World Teacher's Day after two very large cappuccinos in 20 minutes which made me feel like, and I quote, "I feel like my brain will vibrate out of my skull and i will pat it like a kitten". Not doing that again for a while.

Place the digits 1 to 9 in each row, column and irregular region.

							2	
	3							
		1	2	3	4	5		
		2	4		7	6		
		3		5		7		
		4	3		6	8		
		5	6	7	8	9		
							7	
	6							

f-puzzles: <https://f-puzzles.com/?id=22hxp5to>

CTC: <https://tinyurl.com/3wa2jtwm>

November 12, 2022: Quivering

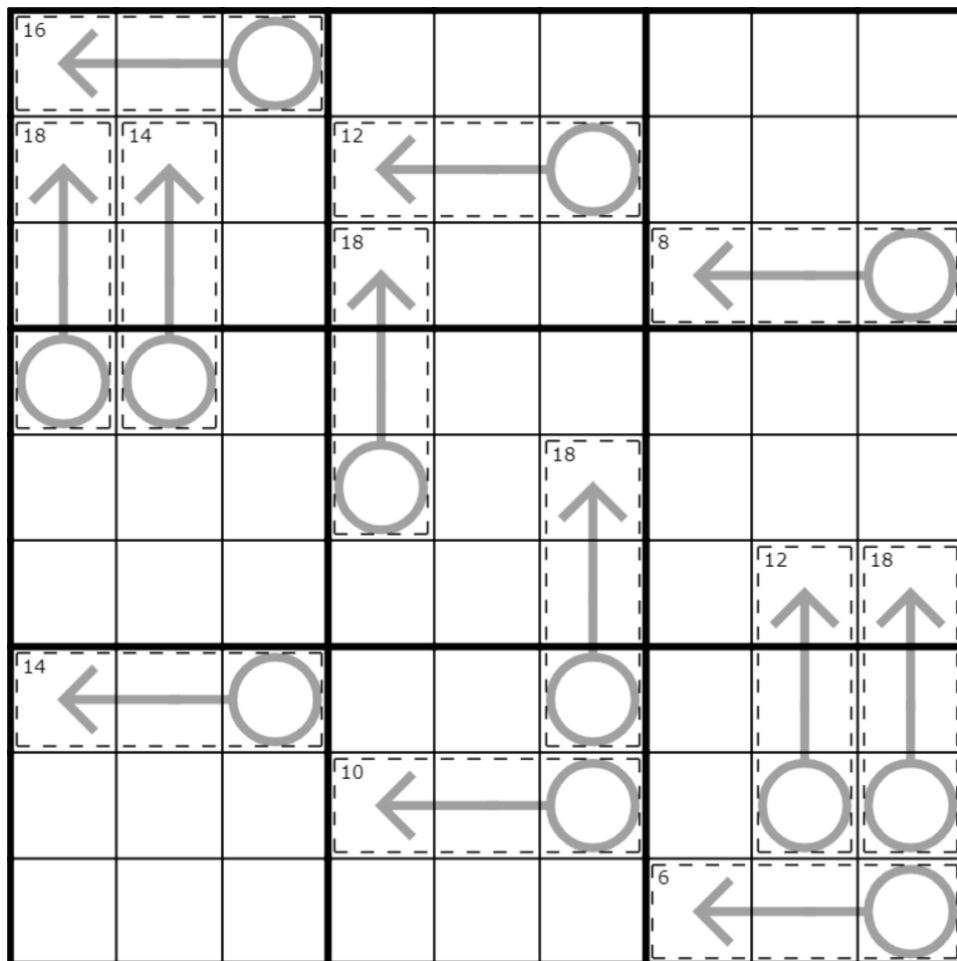
Philip Newman

Yo Dawg, we heard you like math so we put some sums in your sums so you can sum sums while you sum, son.

(The fact that this meme may be older than some GAS solvers makes me feel old.)

Today's GAS is a Killer Arrow Sudoku!

Normal sudoku rules apply. Digits in cages cannot repeat and must sum to the total given. Digits along arrows must sum to the circled total.



Play on f-puzzles: <https://f-puzzles.com/?id=2yqdhpkx>

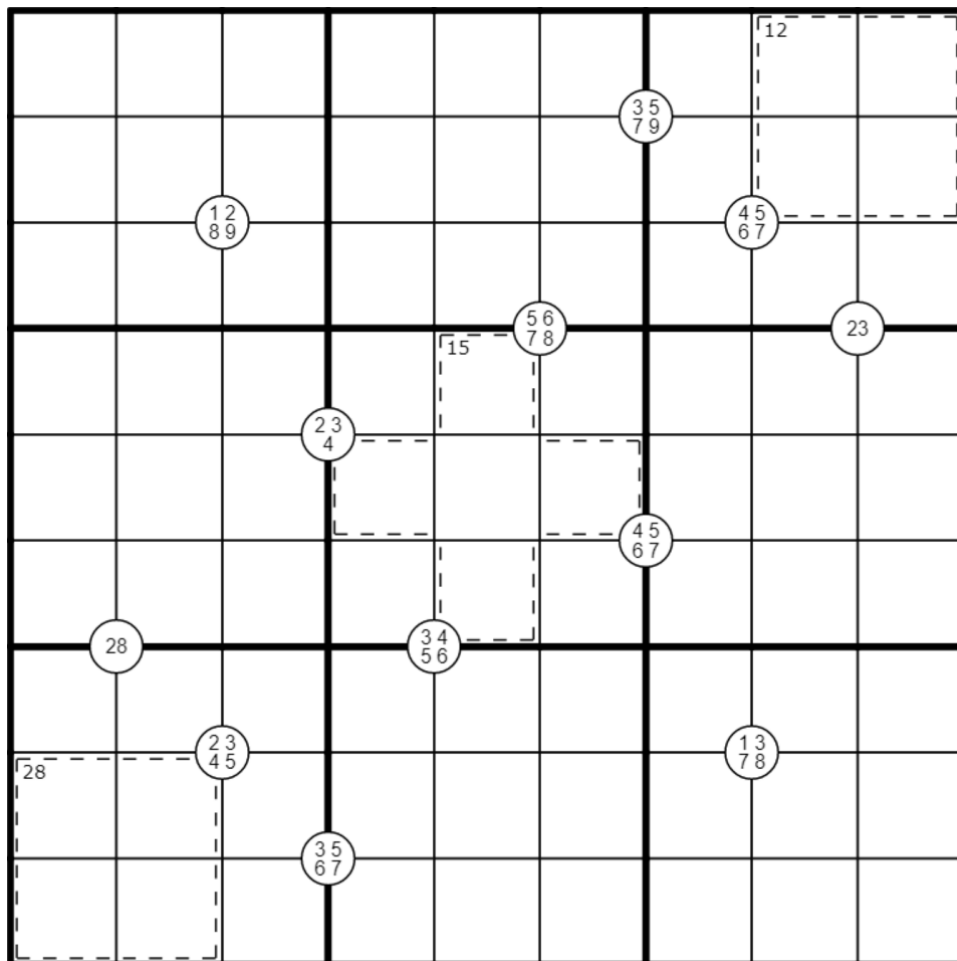
Play on CTC App: <https://tinyurl.com/uhdws8mv>

November 13, 2022: Killer Quadruples

Clover

After Philip's killer arrow yesterday, I've had a request (from my beautiful partner, the only person I'm taking sudoku requests from, so don't get any funny ideas) for more sudoku with other constraints trapped inside of killer cages. But it turns out that the mighty quadruple just can't be fully contained! It longs to be free! It simply refuses to be encaged! So here's a GAS with quadruples that are sort of *next to* killer cages. Enjoy!

Normal sudoku rules apply. Quadruples: digits in a white circle must appear somewhere in the four cells surrounding that circle. Killer: digits in a cage may not repeat and must sum to the indicated total.



f-puzzles: <https://f-puzzles.com/?id=2yzovq3v>

CtC: <https://tinyurl.com/vac9vk9t> (no variant solution checking, sorry!)

November 14, 2022: Pair Up Sudoku

Bill Murphy

G'Day Flavour Fans, here are some things that apparently some flavour combinations that make a solid 10 (according to this cookbook off my shelf):

Chanterelles and Apricot

Caviar and White Chocolate

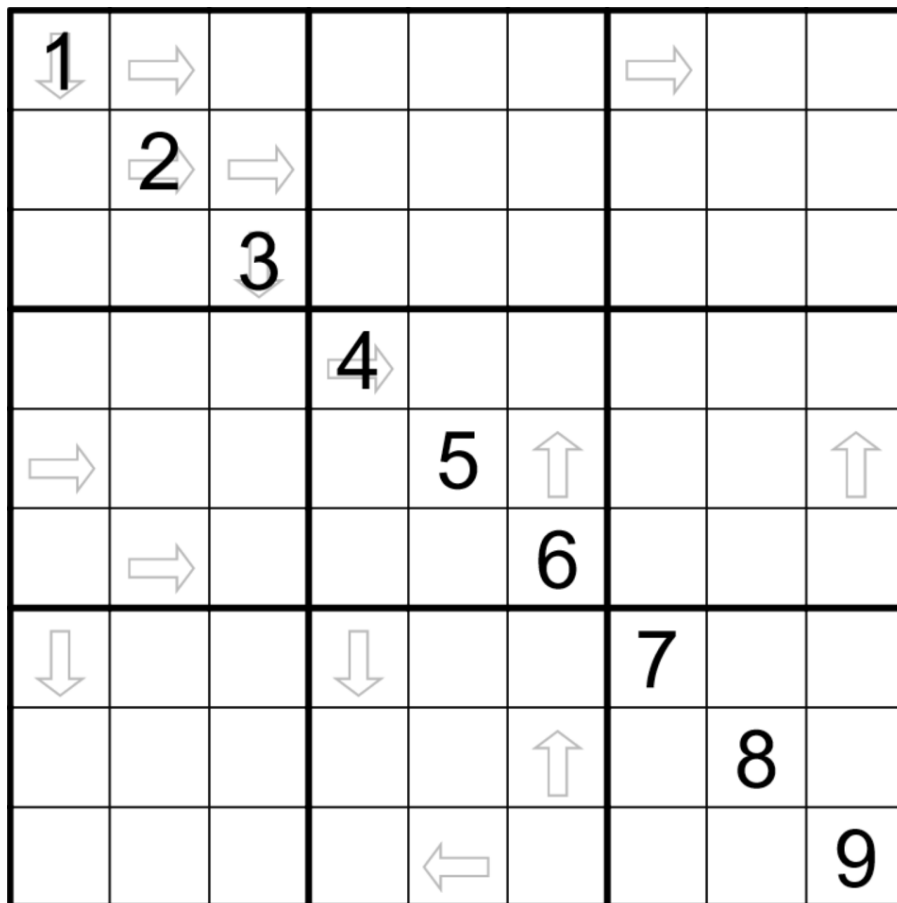
Tomato and Black Tea

Dark Chocolate and Smoked Salmon

Banana and Cloves

You know what else makes a solid 10? The pairs of digits in this Pair-Up Sudoku.

Normal Sudoku Rules Apply. The digit in a cell with an arrow is N. The sum of the Nth digit in the direction of the arrow and that digit N is always 10. Not all possible arrows are given. eg. If a 1 is on an arrow, then one cell away from the arrow in the direction the arrow is pointing will be a 9.



f-puzzles: <https://f-puzzles.com/?id=2y4w7cb3>

CTC: <https://tinyurl.com/bjwd4s39>

Philip Newman

Today's GAS is an Arrow Sudoku!

A 9x9 grid with numbers 1-9 and circles connected by arrows, representing a sequence of moves. The grid is divided into four quadrants by a central cross. The sequence of moves is as follows:

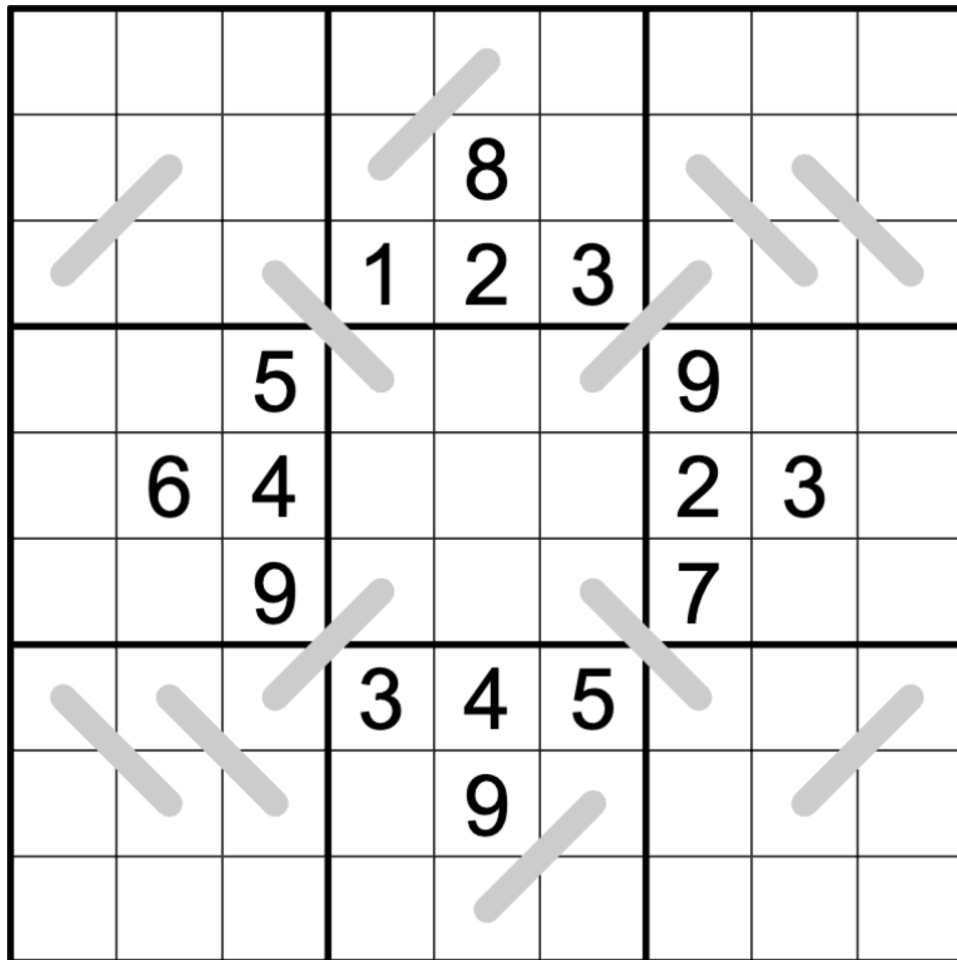
- Start at the top-right circle (row 1, column 9).
- Move 1: Down-left to the circle at (row 2, column 8).
- Move 2: Down-left to the circle at (row 3, column 7).
- Move 3: Down-left to the circle at (row 4, column 6).
- Move 4: Down-left to the circle at (row 5, column 5).
- Move 5: Down-left to the circle at (row 6, column 4).
- Move 6: Down-left to the circle at (row 7, column 3).
- Move 7: Down-left to the circle at (row 8, column 2).
- Move 8: Down-left to the circle at (row 9, column 1).

Play on CTC App: <https://tinyurl.com/mt2pptnv>

Clover

All hail bakpao, Lord of the Puzzles, Keeper of the Mines, Slowest of His Name. 🧡

In today's diagonal sum to 9 GAS, normal sudoku rules apply. Also, each marked diagonal pair of cells sums to 9. Not all pairs that sum to 9 are necessarily marked. (No negative constraint.)



CtC: <https://tinyurl.com/mwdppatm>

November 17, 2022: Extra Diagonal Sudoku

Bill Murphy

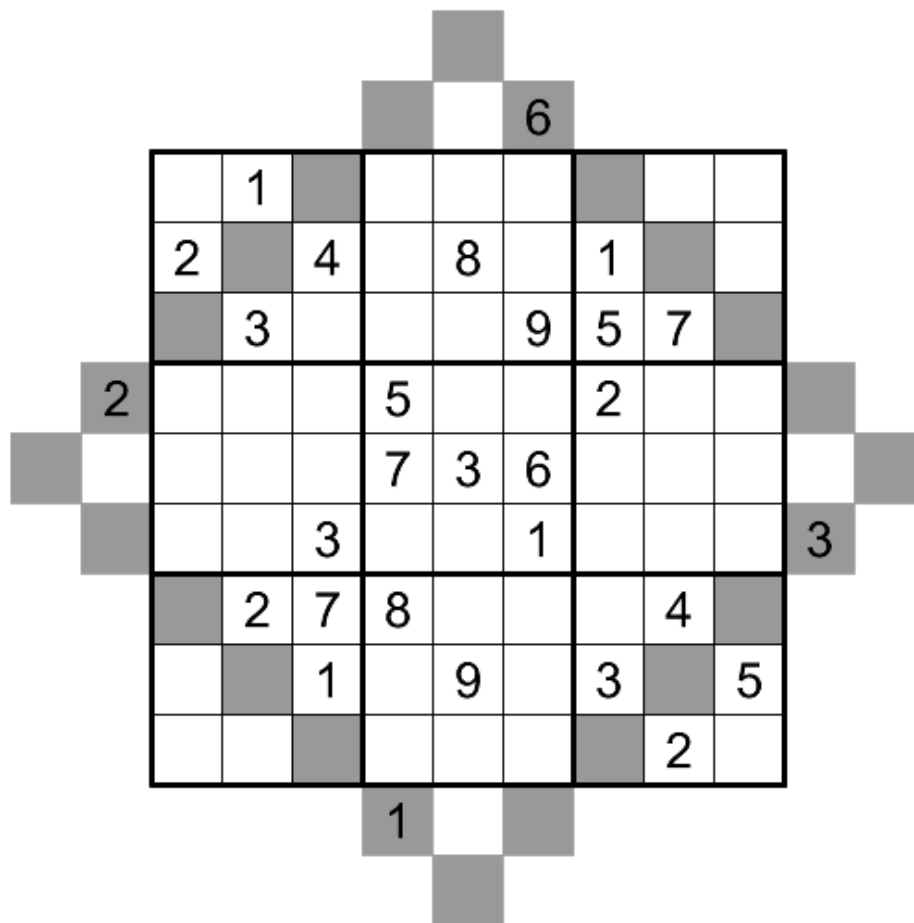
G'Day Geometry Fans,

Ask yourself this: "What shape is a GAS?"

If you answered a square, you are incorrect. Ha. Ha ha. You silly goose, they're octagonal.

We here at Bakpao's puzzle mines, *All hail bakpao, Lord of the Puzzles, Keeper of the Mines, Slowest of His Name*, don't actually harvest square approachable sudoku. Our approachable sudoku actually leave the mines in an octagonal shape before we cut off the corners to make them presentable to the general public. However, I have signed 183 pages of paperwork to obtain permission from Lord Bakpao himself to present to you today, this raw, uncut Extra Diagonal Sudoku for your solving pleasure today.

Normal Sudoku Rules Apply. Each grey diagonal must contain the digits 1 to 7.



Penpa: <https://tinyurl.com/2xtcjaid>

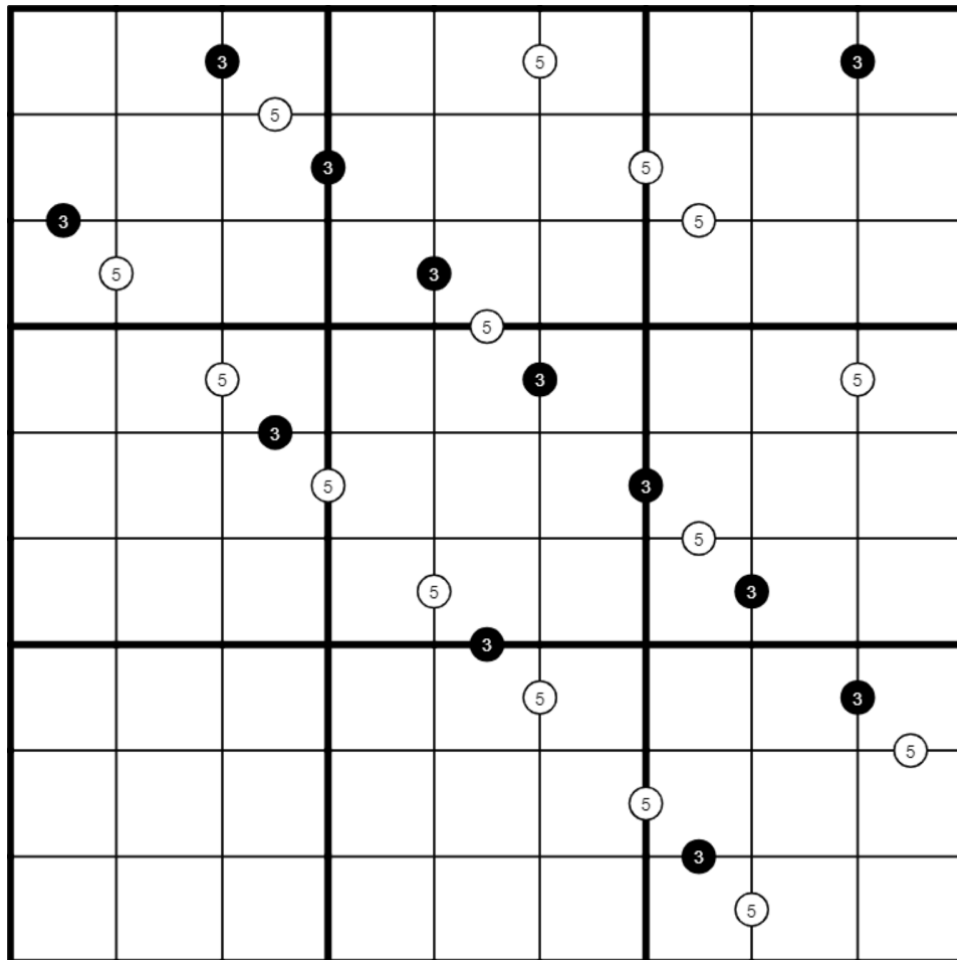
CTC: <https://tinyurl.com/3c5jmmp5>

November 18, 2022: Geology

Philip Newman

Working in bakpao's puzzle mines *All hail bakpao, Lord of the Puzzles, Keeper of the Mines, Slowest of His Name* might involve a lot of brute force, but those with a keen eye for structure will find clues to the formation of puzzles over billions of years microseconds. In today's GAS, a Gamma and Epsilon Sudoku, pay close attention to the layers of constraint which have built up over time. There's a story there. And that story is: Philip likes diagonal lines.

Normal sudoku rules apply. Digits in cells separated by a white dot must have a difference of 5. Digits in cells separated by a black dot must have a ratio of 3:1. (No negative constraint - adjacent cells separated by no dot may have a difference of 5 or ratio of 3:1.)



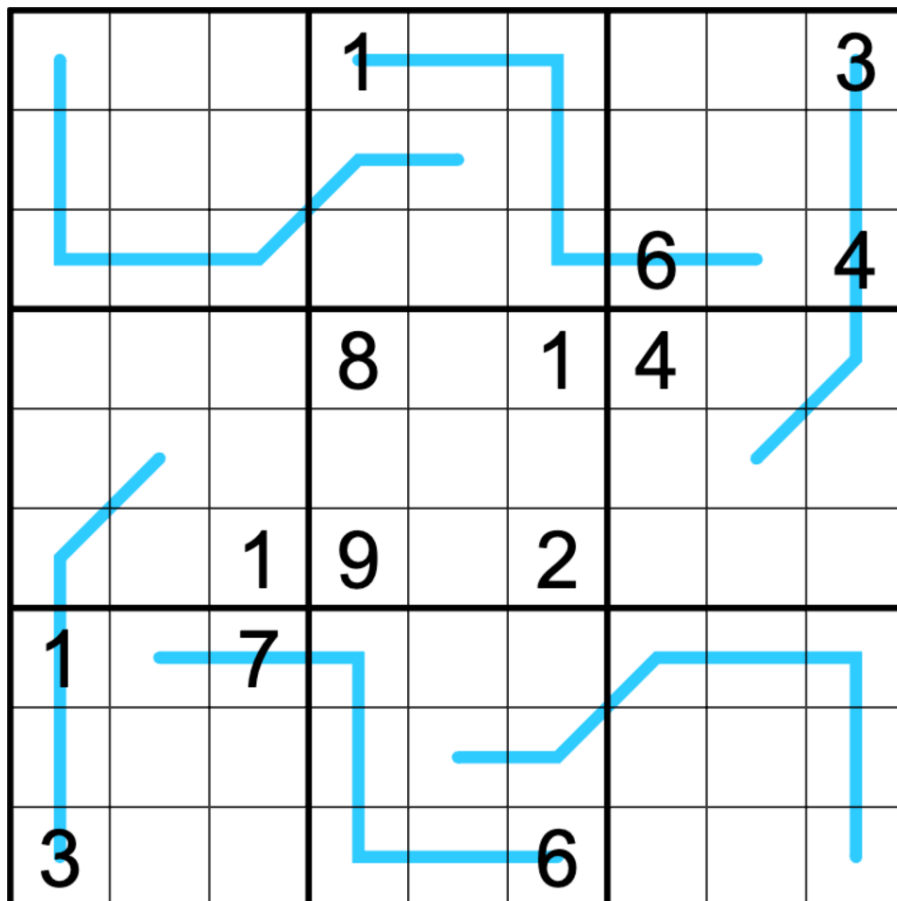
Play on f-puzzles: <https://f-puzzles.com/?id=2lo9la3e>

Play on CTC App: <https://tinyurl.com/23ty37eu>

Clover

- Reusable Software Library
- Right Subscapular Line
- Reusable Sanitary Landfill

Normal sudoku rules apply. Also, along each blue line, the sum of the digits in each region that the line passes through is equal. For instance, for the blue line at the top left, the sum of the five cells it passes through in box 1 is equal to the sum of the two cells it passes through in box 2. Different lines may or may not have different sums.



CtC: <https://tinyurl.com/dvt63hzc>

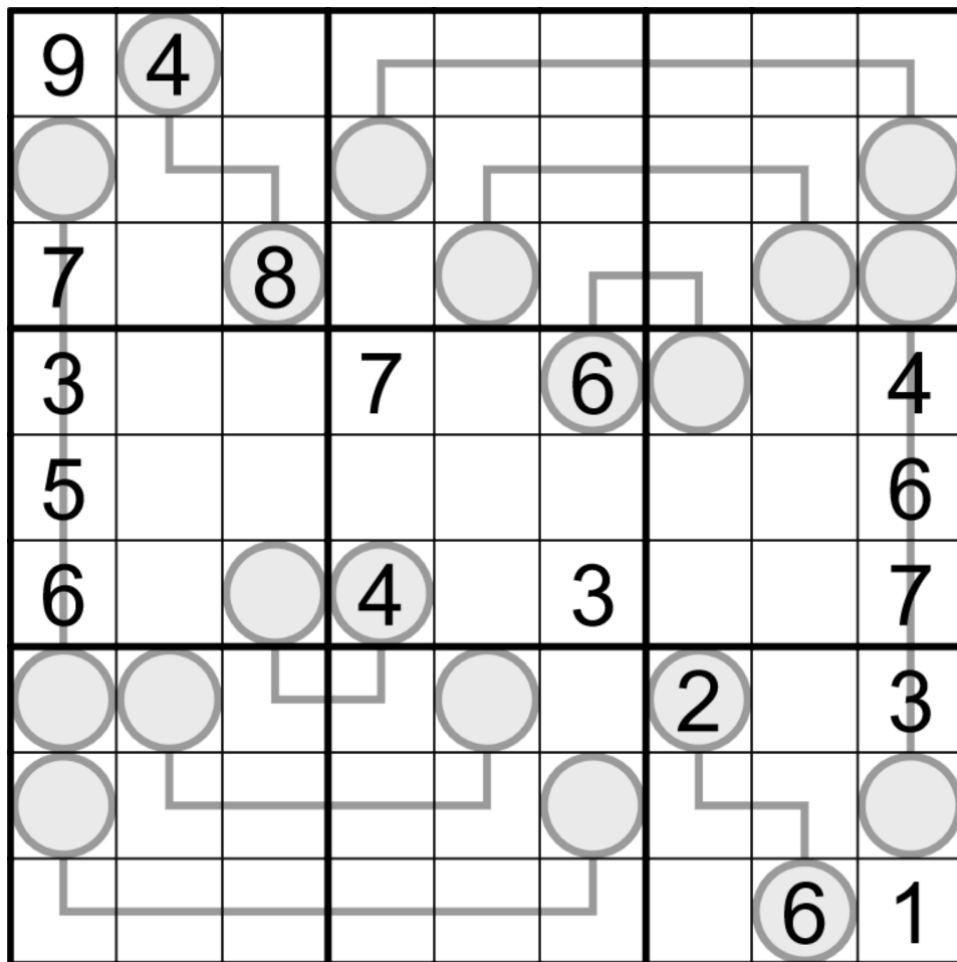
November 20, 2022: In Between Days

Bill Murphy

G'Day Music Fans,

You know, I've got a lot of puzzles that I just name after songs. Most of the time, it's just whatever I'm listening to, but this Between Lines Sudoku was an easy pick for a title.

Normal Sudoku Rules Apply. Digits along a line must be between digits in the circles at each end of the line.



f-puzzles: <https://f-puzzles.com/?id=27jzh5h>

CTC: <https://tinyurl.com/ycy86hd3>

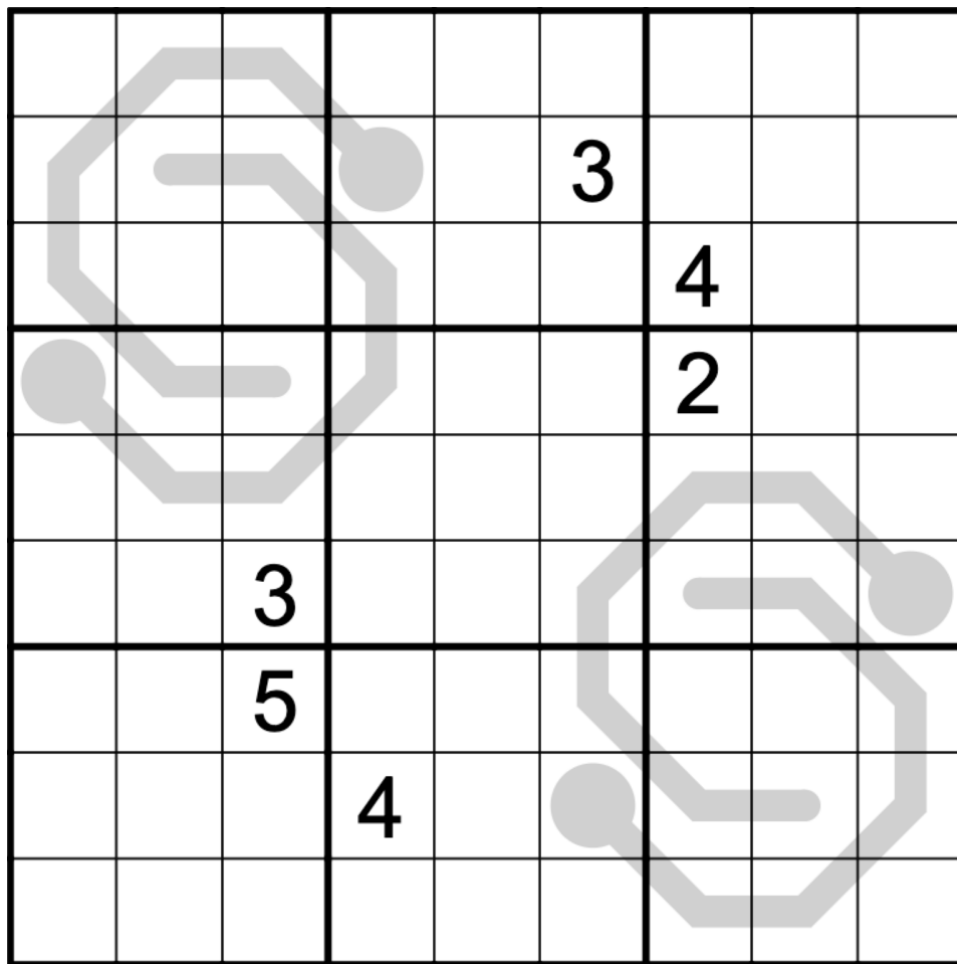
November 21, 2022: Carnot Engine

Philip Newman

I'm on vacation! This is my first post here from outside the state of Texas. (Although at the moment I can literally look across the street and see Texas. More driving today!)

Speaking of states of matter, today's GAS is a Thermo Sudoku!

Normal sudoku rules apply. Digits along thermometers must strictly increase from bulb to tip.



Play on f-puzzles: <https://f-puzzles.com/?id=2jth96z4>

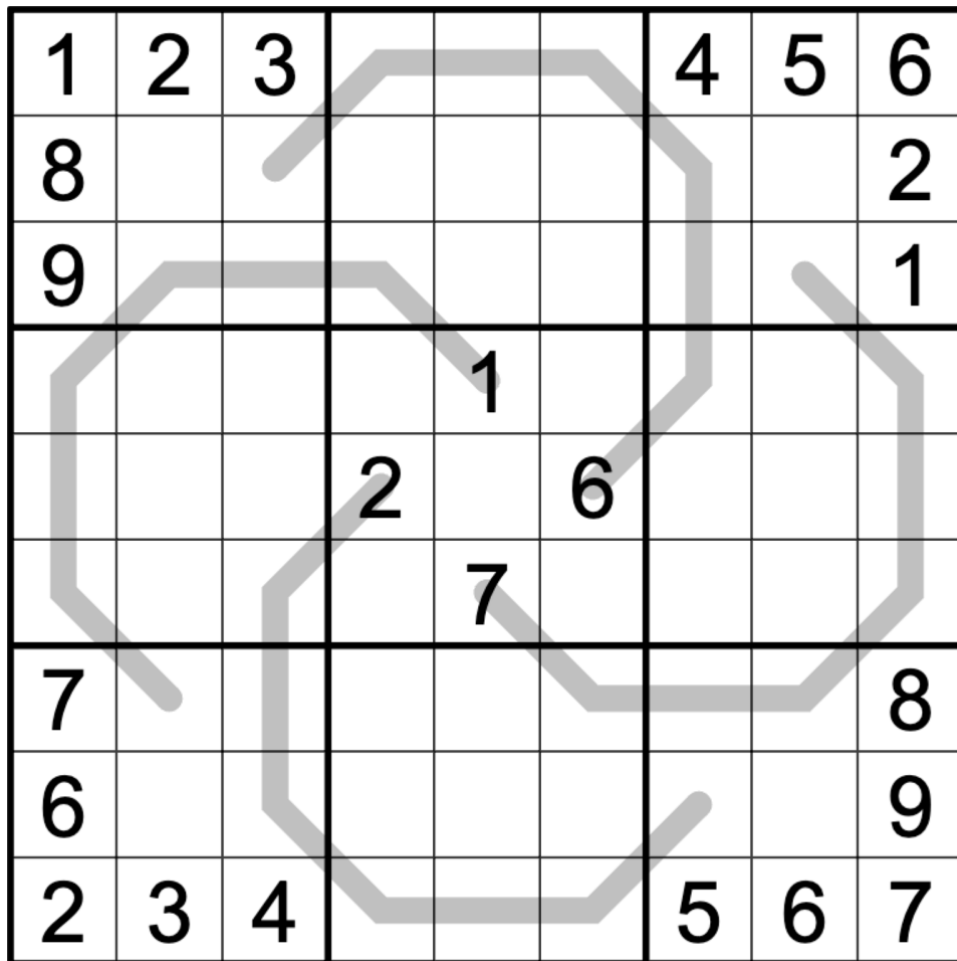
Play on CTC App: <https://tinyurl.com/j9rrabm5>

November 22, 2022: Palindrome

Clover

It may be cold and blustery outdoors, but here in the GAS greenhouse, the sudoku are blooming. I picked this one just for you! 🌸

Normal sudoku rules apply. Also, the digits along each gray line form a palindrome (read the same forwards and backwards).



f-puzzles: <https://f-puzzles.com/?id=2ht3yzek>

CtC: <https://tinyurl.com/mrx3bnkf>

November 23, 2022: Dot You (Forget About Me)

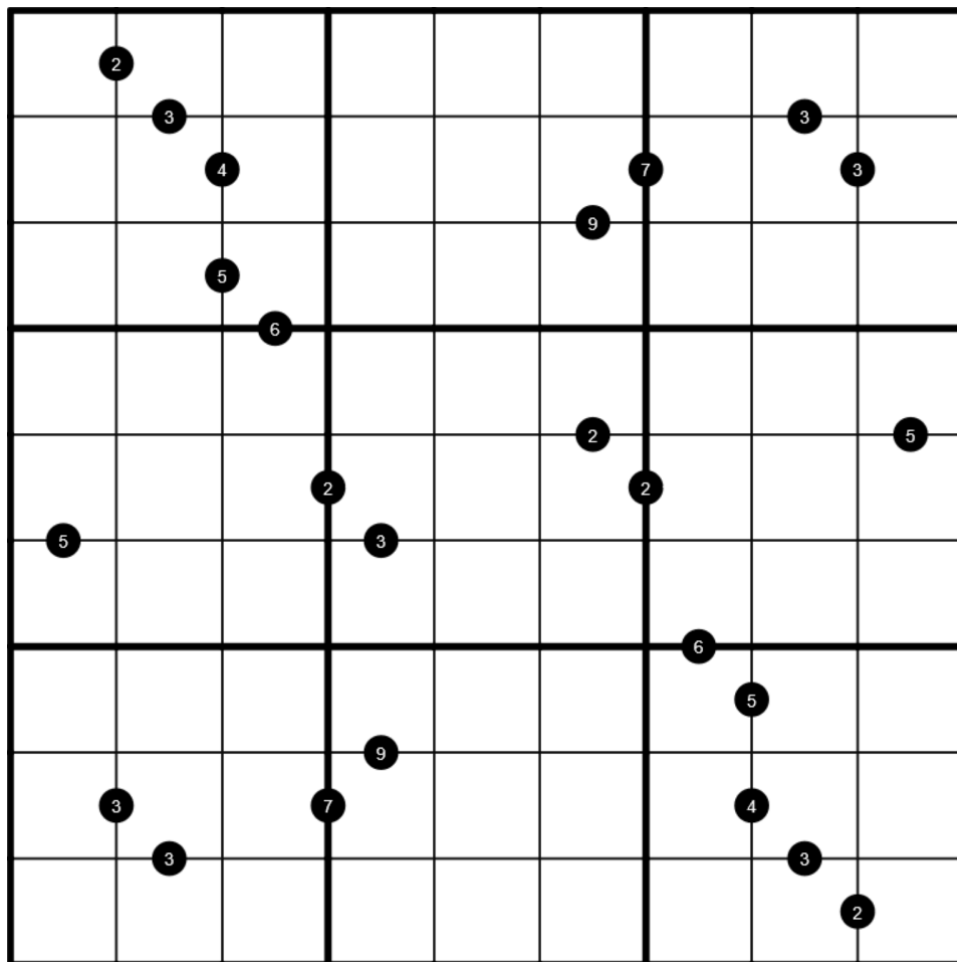
Bill Murphy

G'Day Breakfast Club Fans,

Sorry I'm late (AEDST anyway) , I had a last minute dumb joke title idea for this puzzle and had to change it.

Please don't Ratio me 👉

Normal Sudoku Rules Apply. Digits separated by a black dot must be in a ratio described by the number in the dot. Not all dots are given.



f-puzzles: <https://f-puzzles.com/?id=2q7j8zh7>

CTC: <https://tinyurl.com/3de6kdpx>

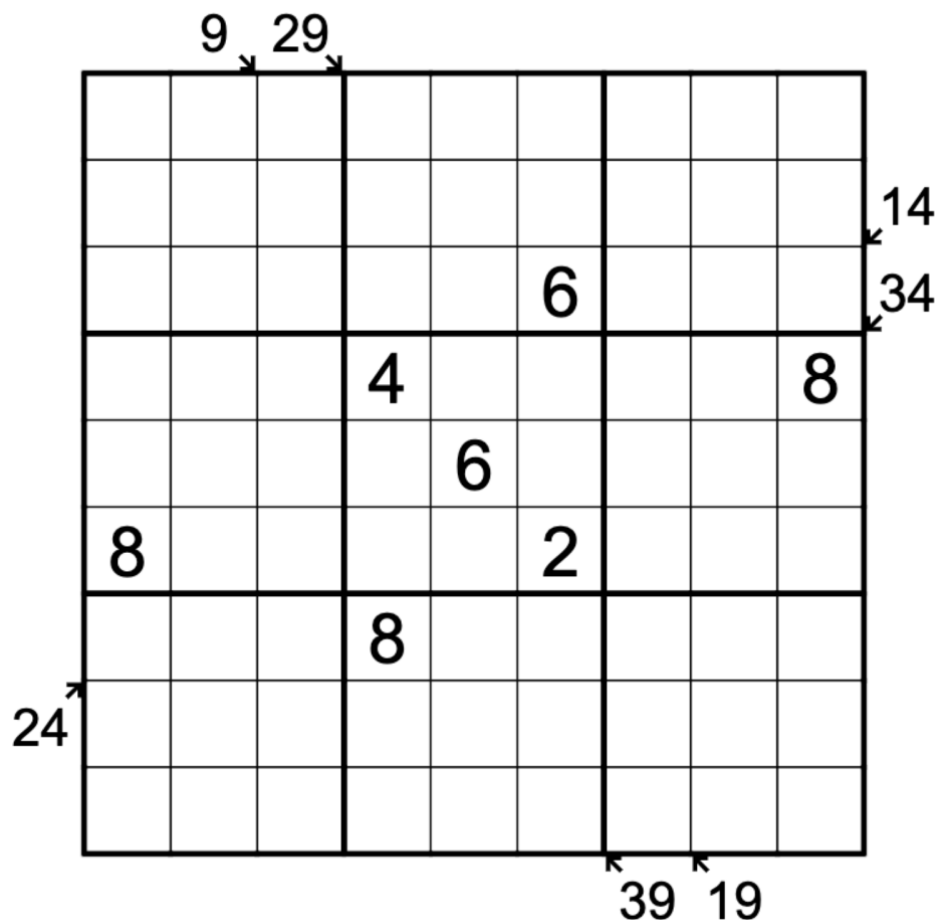
November 24, 2022: Gobble Gobble

Philip Newman

Happy Thanksgiving! What are you thankful for today? I'm thankful for having already set this Little Killer Sudoku so I don't have to think on vacation! Mark is thankful that this intro isn't any longer...

Normal sudoku rules apply. Digits along the indicated diagonals must sum to the total given (digits may repeat if allowed by other rules).

GAS 101 Hint: Start with the smallest sum - that's a lot of cells that need to add up to 9, how can you make that work? The next smallest is less restricted... until you consider the digits you've already placed!



Play on f-puzzles: <https://f-puzzles.com/?id=2hgx899b>

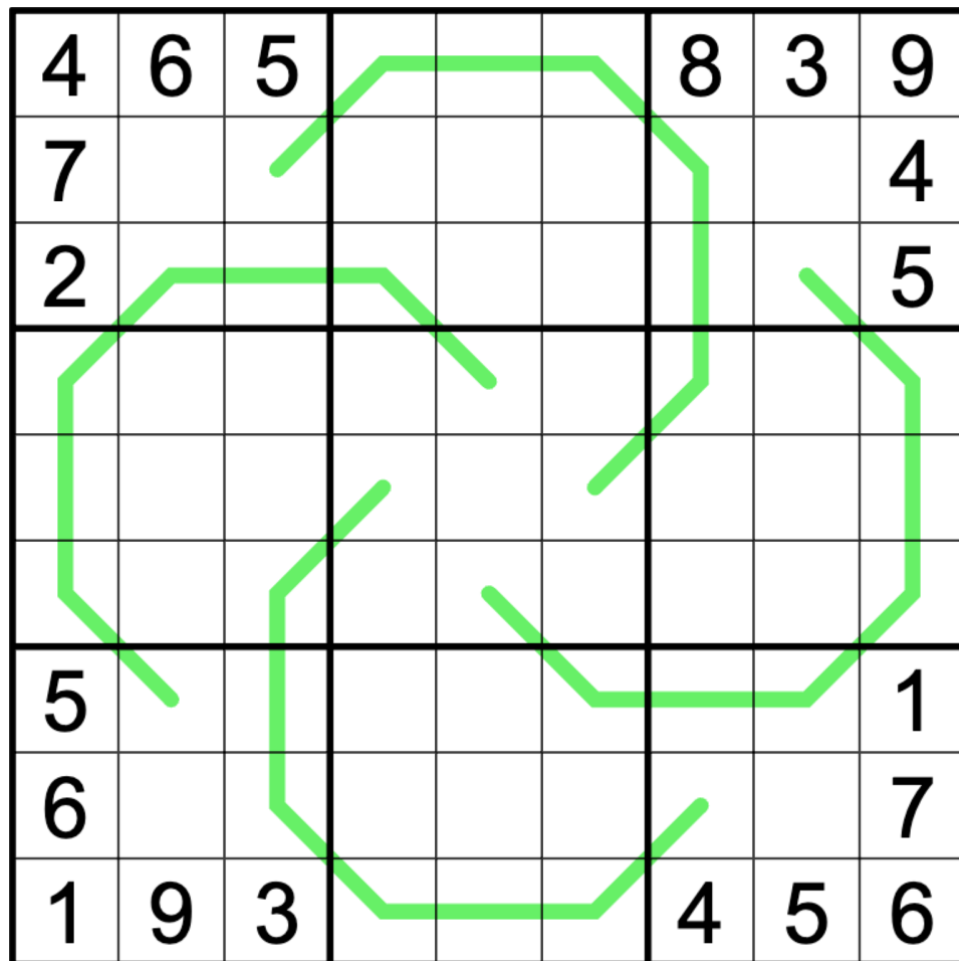
Play on CTC App: <https://tinyurl.com/4km5x7zj> (may not have solution check!)

November 25, 2022: German Whispers

Clover

Did you know that clover, now often considered invasive, was once seen as a key component of a thriving lawn? I've put a lucky four-leaf clover in this German whispers sudoku as a reminder of a cloverier time! 🍀

Normal sudoku rules apply. Also, along each green line, adjacent digits must differ by at least 5.



f-puzzles: <https://f-puzzles.com/?id=2zzqfmcn>

CtC: <https://tinyurl.com/2s3vvrhy>

November 26, 2022: Entropic Lines Sudoku

Bill Murphy

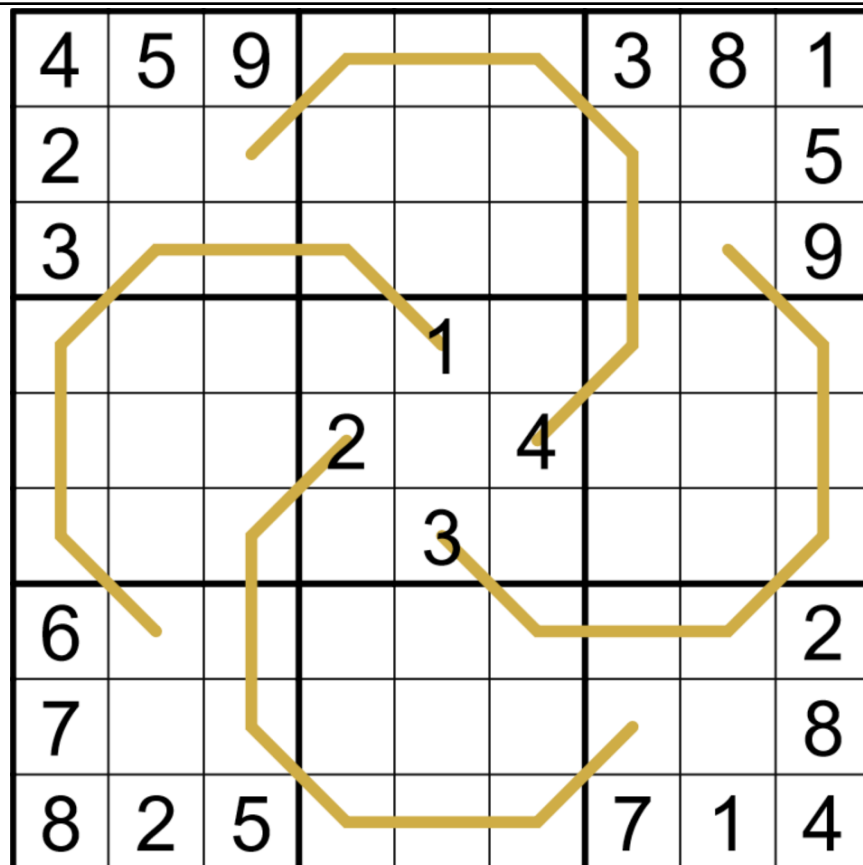
G'Day Nature Fans, there's a bunch of reasons I've heard for why four-leaf clovers are so rare, but my favourite, non-genetic reason I've heard is that Four isn't a number in the fibonacci sequence.

Don't know how much truth there is in that one, but I do like the idea that I could pad out this intro to today's Entropic whispers sudoku.

Normal Sudoku Rules Apply. Any 3 digits in a row along a line must have a low digit (123), a medium digit (456) and a high digit (789).

So, along any line, you'll have a repeating sequence of low/med/high/low/med/high etc. etc. (It's not necessarily that though!)

GAS 101 Hint: There's a subtle negative constraint here! Once you know that where a digit is along a line, you can count two cells along that line to find the next spot where another digit of it's like lies, but you also know those digits cannot appear anywhere else on the line! Use that to your advantage!



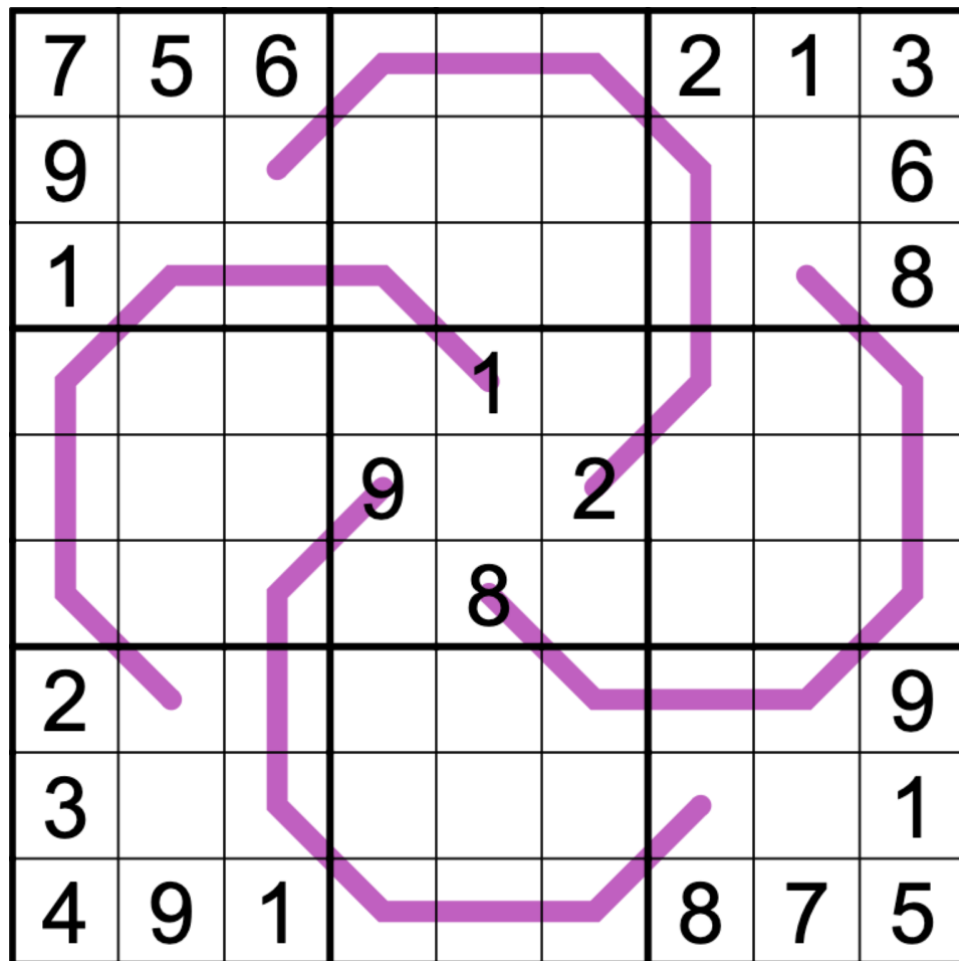
f-puzzles: <https://f-puzzles.com/?id=2qcqnc3x>

CTC: <https://tinyurl.com/2txcbptk>

Philip Newman

But look what I found! It's a four-leaf purple clover!

Normal sudoku rules apply. Digits along purple renban lines must form a non-repeating consecutive set, in any order - for example, a 4-cell renban line could be 4352, but not 5679 or 2312.



Play on CTC App: <https://tinyurl.com/tmps8jx3> (purple), <https://tinyurl.com/mu9c6wp2> (grey)

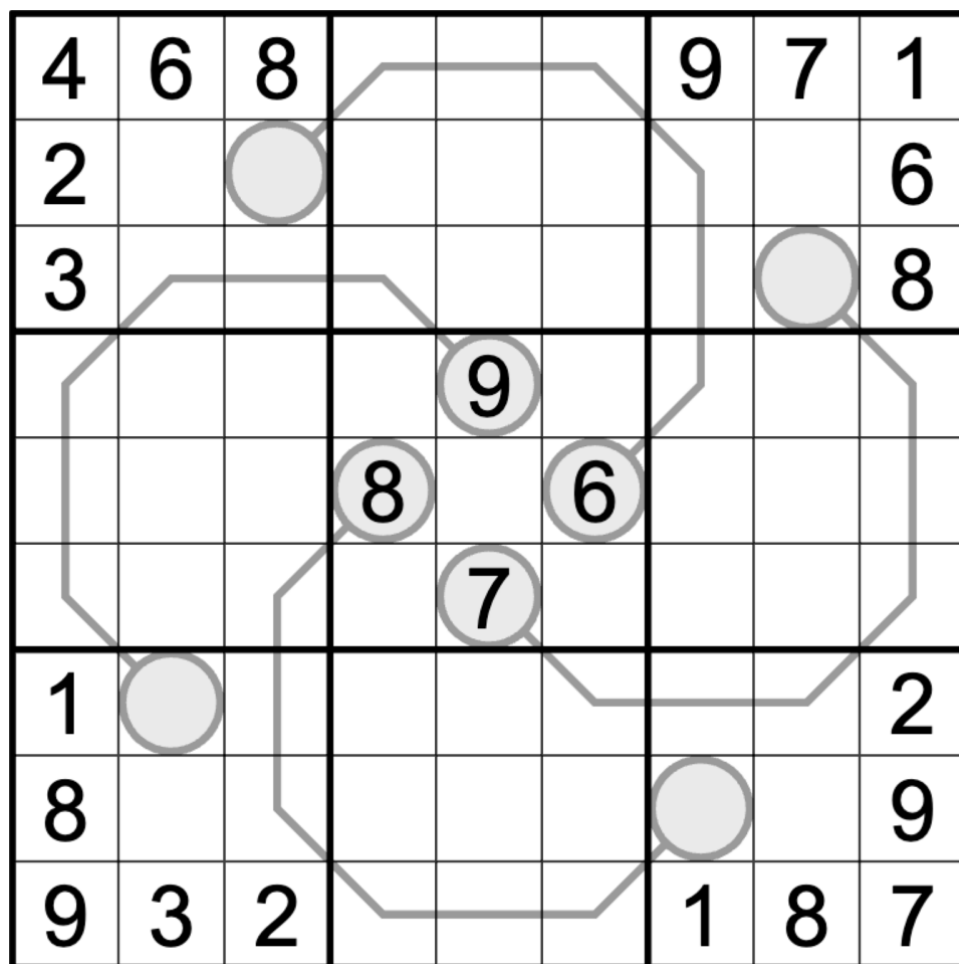
November 28, 2022: Between Lines

Clover

We've learned over the last few days that clover is solvable, but did you know that it's also edible (even if you aren't a cow)? Supposedly, it goes nicely in a salad. Please don't eat the puzzle until you've finished solving it, though!

Normal sudoku rules apply. Digits along each line must have values in between the ones in the attached circles.

Digits may repeat along a line if they follow sudoku rules. Lines don't have to contain every possible value: for example, a line with circles containing 3 and 8 might contain the digits 7, 4, 7, and 6 in that order.



f-puzzles: <https://f-puzzles.com/?id=2gbpv6ve>

CtC: <https://tinyurl.com/2p9ujch2>

November 29, 2022: Dot You Want Me

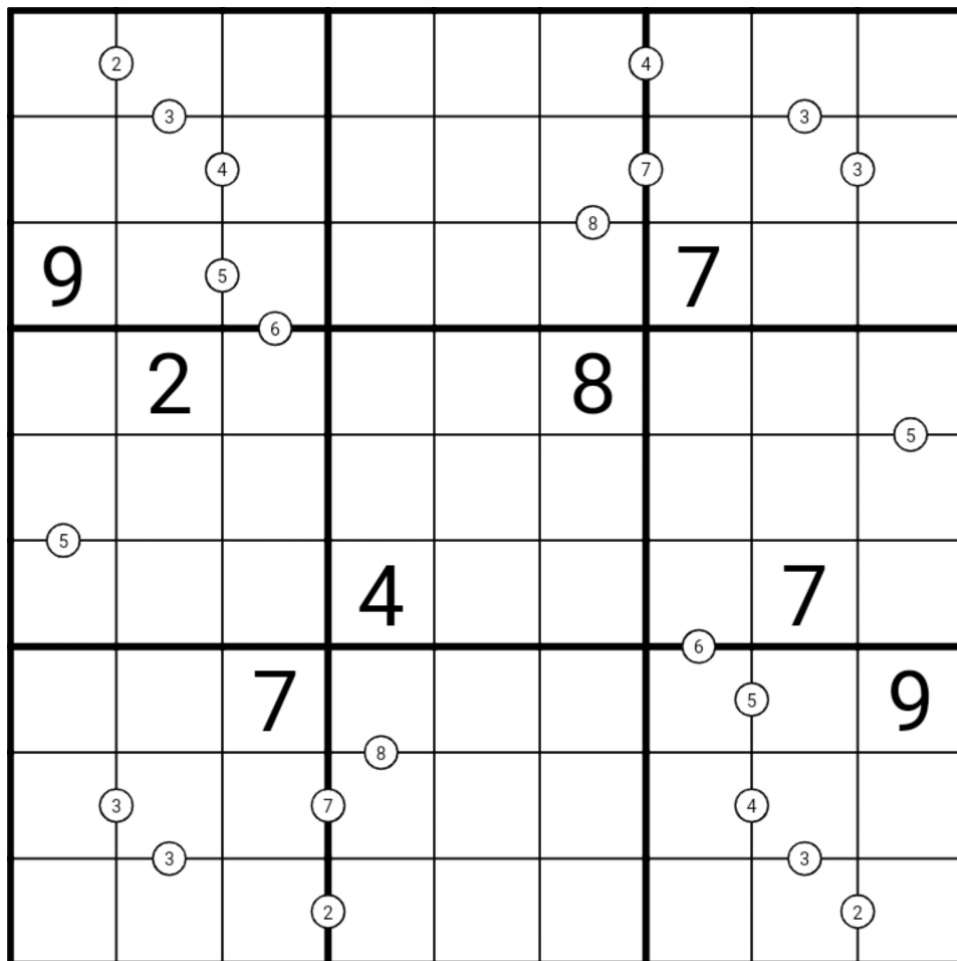
Bill Murphy

G'Day friends, it's a huge couple of days for me. In the next 24 hours, I will likely own a home! Even scarier, I'm going on school camp. (I'll be back for next GAS, don't worry.)

(early career teachers, don't let anyone tell you, there's a distinct difference between both nights on a school camp. Always, always shotgun supervision on the second night)

Today, it's Difference Sudoku! This is like my ratio sudoku from a few days back, but it's a little trickier! Be careful!

Normal Sudoku Rules Apply. Cells separated by a white dot give the difference between them. Not all dots are given, because that would be silly.



F-puzzles: <https://f-puzzles.com/?id=2jr27jvt>

CTC: <https://tinyurl.com/jjrc8dfh>

November 30, 2022: Overthrowing bakpao

Philip Newman

All hail bakpao, Lord of the Puzzles, Keeper of the Mines, Slowest of His Name

...is what I would have said, but it's time for another revolution. Conditions in the puzzles mines are revolting, and I will not set one more single puzzle until either bakpao agrees to all of our terms of surrender or Saturday, whichever comes first.

Today's GAS is an Anti-King Sudoku!

Normal sudoku rules apply. Digits in diagonally adjacent cells cannot be the same. (In other words, a digit cannot touch itself, even diagonally.)

					9			
				7				
		5	1	2	6	8		
9		7				4		
	8	3				1	6	
		2				5		9
		6	8	4	3	7		
				5				
			9					

Play on f-puzzles: <https://f-puzzles.com/?id=2l96awbd>

Play on CTC App: <https://tinyurl.com/2p8f7sw7>

Bonus 1: Thermo Whispers Palindrome Region Sum Lines

Philip Newman

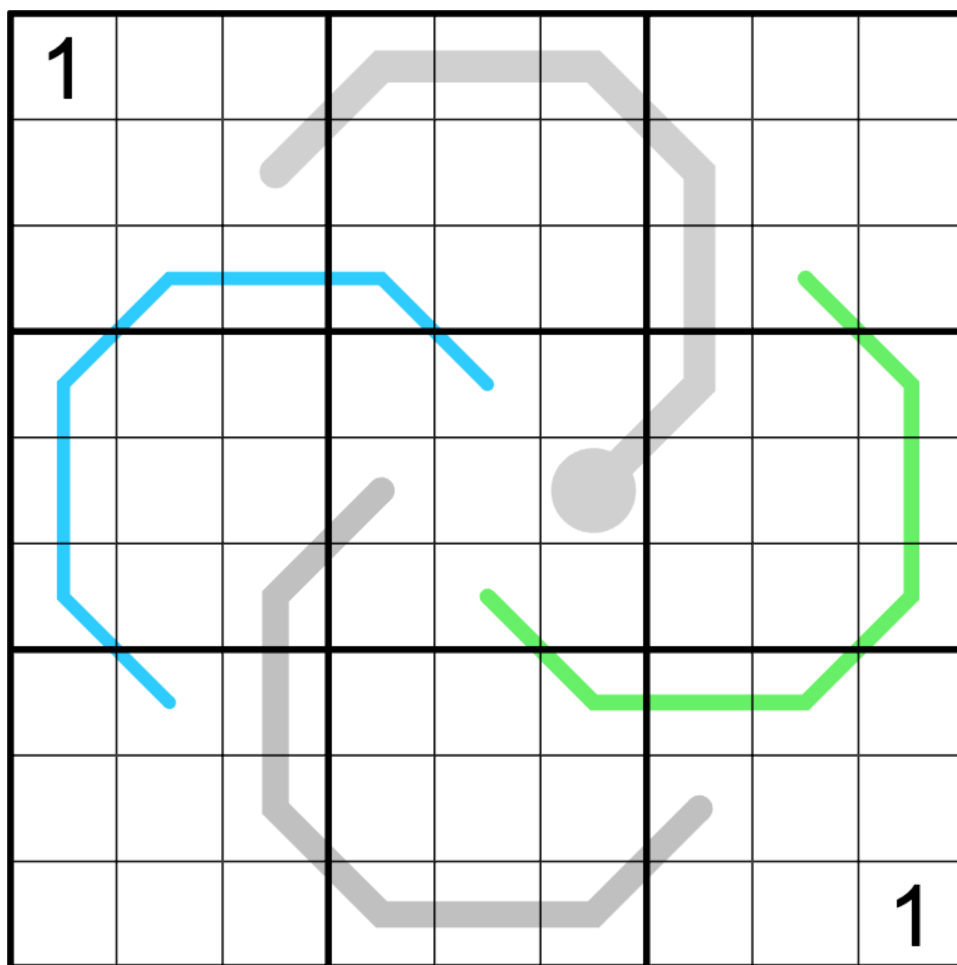
Normal sudoku rules apply.

Thermo: Digits along the thermometer must strictly increase (not necessarily consecutively!), starting at the round bulb.

Palindrome: Digits along the gray line must form a palindrome (read the same forwards and backwards).

German Whispers: Along the green line, adjacent digits must differ by at least 5.

Region Sum Lines: Along the blue line, the sum of the digits in each region that the line passes through must be equal.



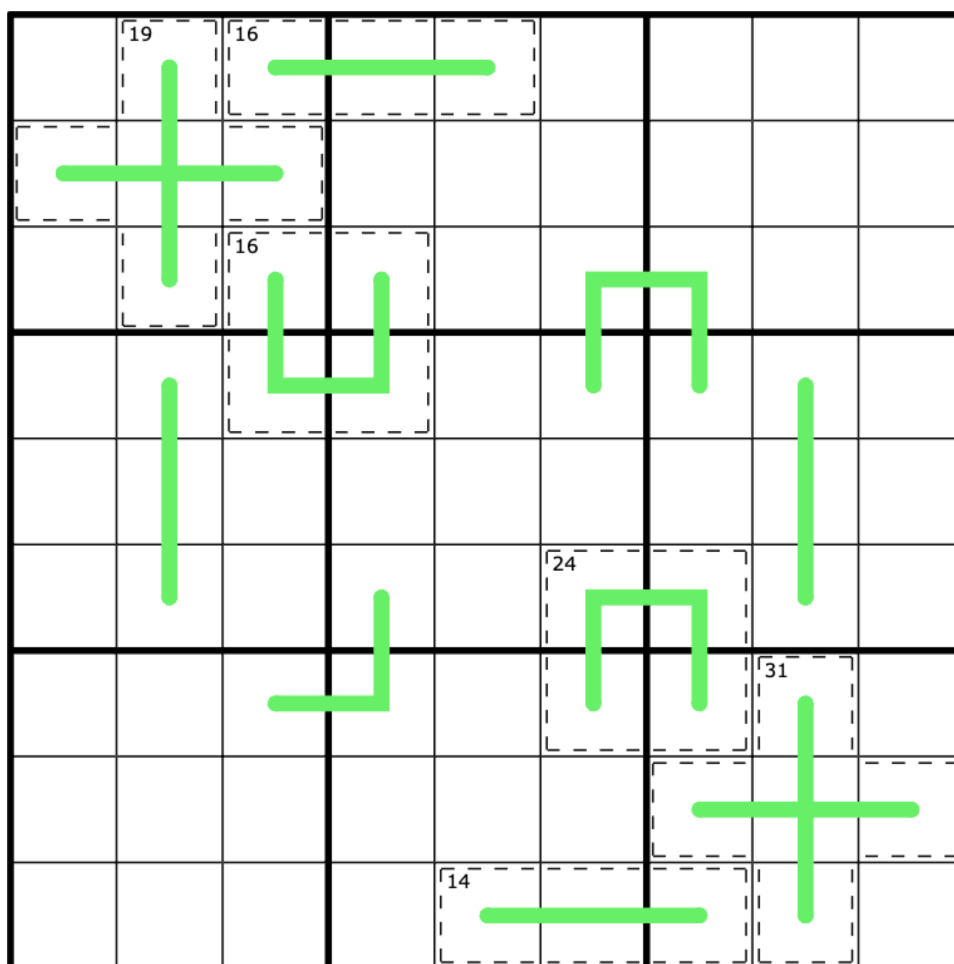
f-puzzles: <https://f-puzzles.com/?id=2kda56gw>

CtC: <https://tinyurl.com/43r2zadd>

Bonus 2: Slick II: Even Slicker

Bill Murphy

Normal Sudoku Rules Apply. Digits along green lines must differ by at least 5. Digits in cages must sum to the given total and must not repeat.

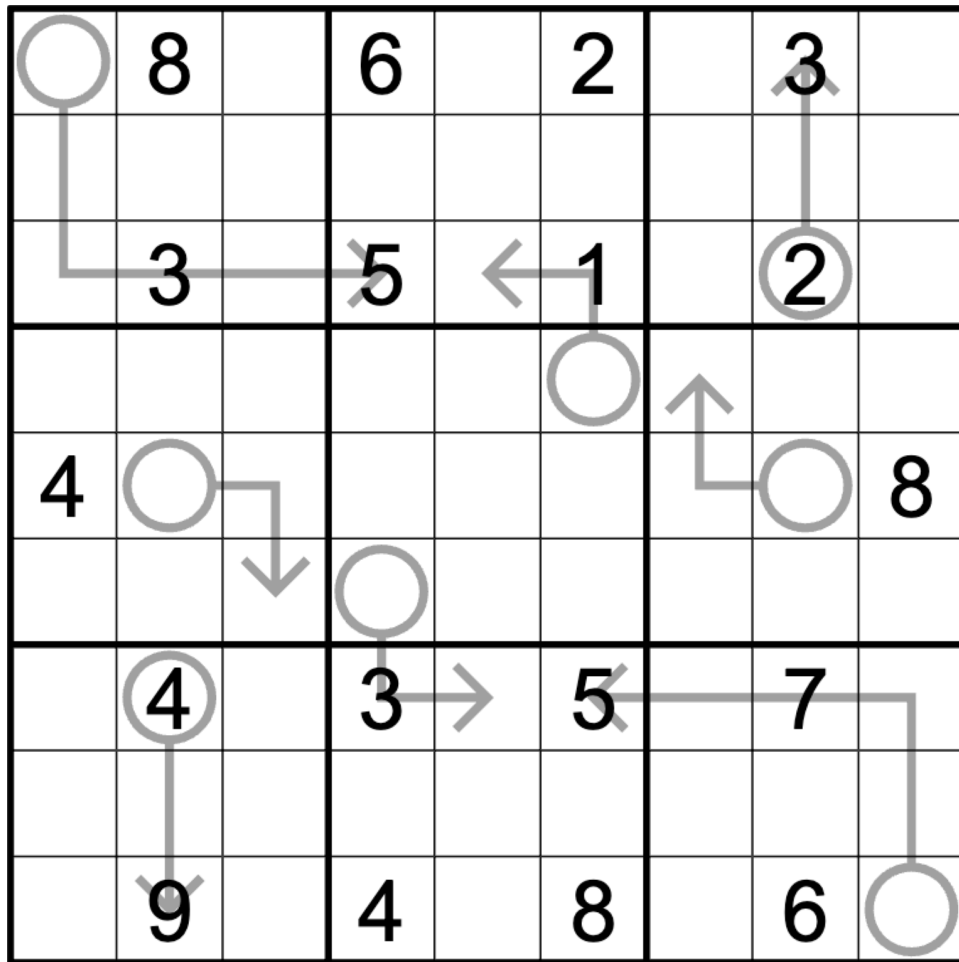


f-puzzles: <https://f-puzzles.com/?id=2jd56gjo>

CtC: <https://tinyurl.com/yvpr4h4r>

Clover

its circle would contain the digit 2 ($1 \times 4 \times 3 = 12$).



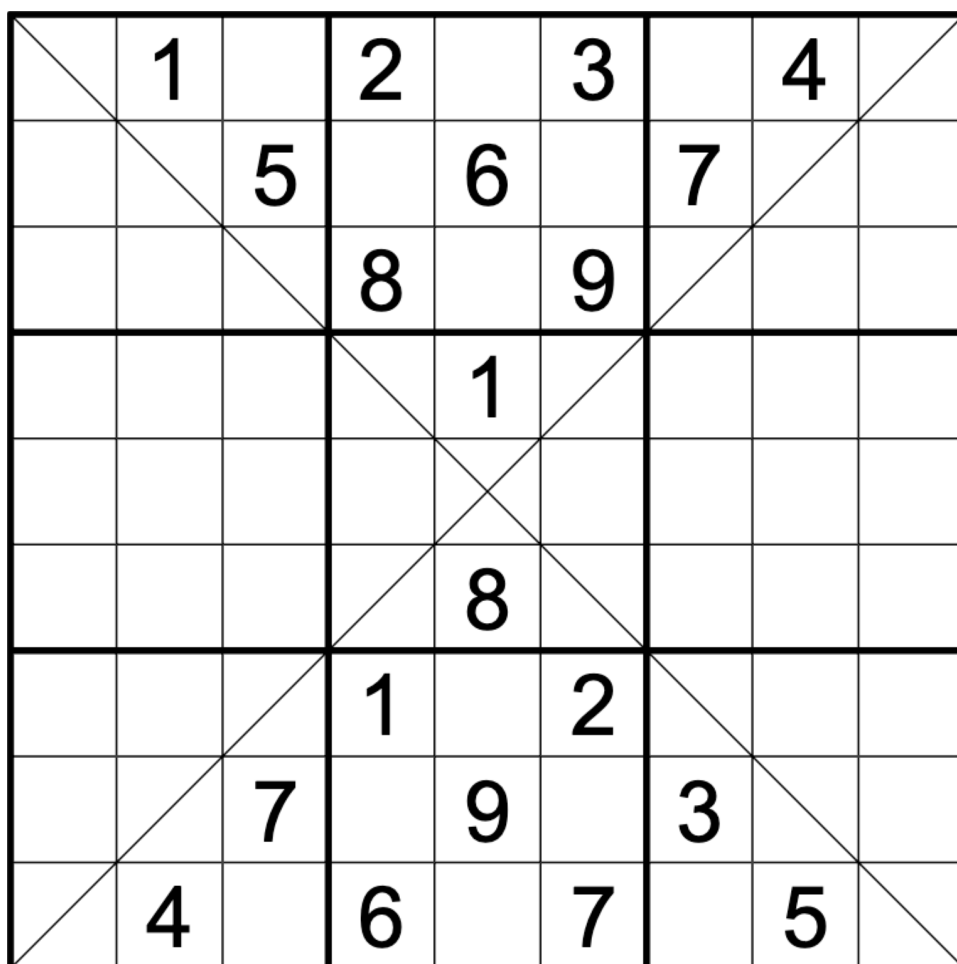
(Note: no answer checking in f-puzzles - timer will not stop!)

CtC: <https://tinyurl.com/2s43ux8f>

Bonus 4: Diagonal

Philip Newman

Normal sudoku rules apply. Digits along the marked diagonals may not repeat.



f-puzzles: <https://f-puzzles.com/?id=2jgg2l8a>

CtC: <https://tinyurl.com/4ym55nva>

Bonus 5: Pencilmark Sudoku

Bill Murphy

Normal sudoku rules apply. Some cells are already marked with candidates. If a cell is already marked, the digit in that cell can only be one of those candidates.

9		12		12				4
				78		78		
12				345	4		78	
			345	234	123			
12	34	567	456	12345 6789	89		78	56
			567	678	789			
	34		2					56
		34		34				
8				56		56		9

f-puzzles: <https://f-puzzles.com/?id=2zs4fk3e>

CtC: <https://tinyurl.com/bdeazzvu>

Time Benchmarks

	Two party hats	One party hat	Today's dinosaur:
November 1, 2022	8:00	14:00	Bad Dream Bagaraatan
November 2, 2022	6:00	10:00	tool-assisted Color A Dinosaur
November 3, 2022	8:00	15:00	Serialized Silutitan
November 4, 2022	7:30	14:00	beknighted bistahieversor
November 5, 2022	6:30	11:30	shelled Serendipaceratops
November 6, 2022	8:30	17:00	Diurnal Daanosaurus
November 7, 2022	7:30	13:30	miniature micropachycephalosaurus
November 8, 2022	5:00	9:00	Undefined Uteodon
November 9, 2022	4:33	11:00	Free-range Fusuisaurus
November 10, 2022	7:30	13:30	massive maxakalisaurus
November 11, 2022	8:00	15:00	Undulating Utahraptor
November 12, 2022	8:00	16:00	Xzibited Xianshanosaurus Xzibit, Xzibited by Xzibit
November 13, 2022	7:00	13:00	liberated lurdusaurus
November 14, 2022	8:00	15:00	Delicious Draconyx
November 15, 2022	9:00	18:00	Arched Archaeodontosaurus
November 16, 2022	6:30	12:00	mesmerized mei
November 17, 2022	6:30	11:00	Blood Sweat and Teratophoneus
November 18, 2022	8:00	15:00	Geo-logical Garrigatitan
November 19, 2022	7:30	13:00	CD (cool dinosaur)
November 20, 2022	8:00	14:59	Robert Smith Rhoetosaurus
November 21, 2022	7:00	13:00	Vacationing Volgatitan
November 22, 2022	6:00	11:30	green gargoyleosaurus
November 23, 2022	7:00	13:00	Call my Neimongosaurus
November 24, 2022	8:00	16:00	Tasteful Turkey
November 25, 2022	7:00	13:00	lush lythronax
November 26, 2022	8:00	14:00	Rare Rahonavis

November 27, 2022	6:30	12:00	Purple Pukyongosaurus
November 28, 2022	7:00	13:00	gastronomical gasparinisaura
November 29, 2022	8:00	14:00	Differing Demandasaurus
November 30, 2022	5:30	11:00	Unionized Uintasaurus